



**SCATTERGOOD  
& JOHNSON LTD**



Certificate number 734/95

ELECTRICAL ENGINEERING AND FLUID CONTROL DISTRIBUTORS

**UniOp**

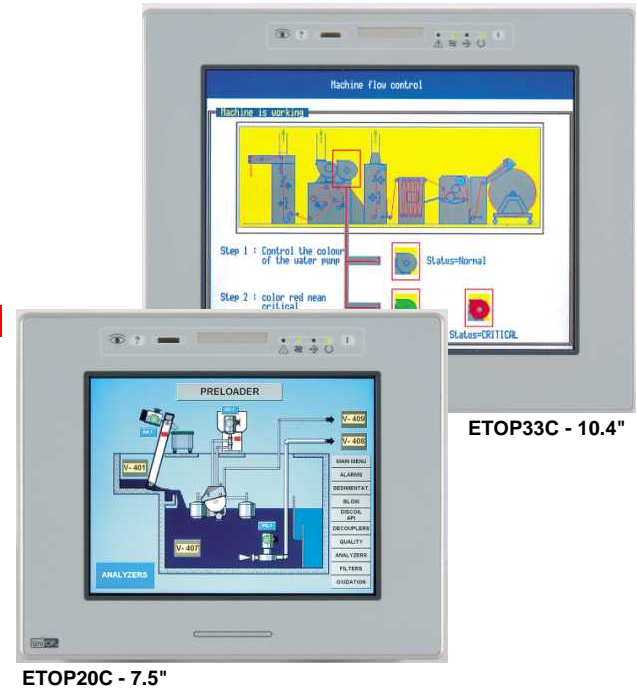
**ETOP Touch Terminals**

**7.5" & 10.4" TFT Screens**

- \* Resistive touch screen
- \* Support of more than 200 communication drivers
- \* Optional modules for fieldbus systems (Profibus DP, DeviceNet, Interbus, CANopen) and Ethernet
- \* Compatible with HMI control and local I/O subsystems
- \* Programmable with UniOP designer
- \* CE and UL approved

**FUNCTIONALITY FEATURES**

- \* Data entry
- \* Alarms and historical alarm list
- \* Keyboard macro editor
- \* Dynamic graphic objects
- \* Recipe data storage
- \* Data acquisition and trend presentation
- \* Eight level password protection
- \* Report printing to serial printer
- \* Dual protocol support
- \* Video Module compatible
- \* True type fonts
- \* Multilanguage capability



Part Number	Display	Memory/ Resolution	Inbuilt Ethernet	Dimensions (mm)			Price
				Faceplate	Cut-Out	Mtg Depth	
<b>ETOP20C-0050</b>	7.5" TFT 64k Colour 240cd/m <sup>2</sup>	64MB Internal	Yes 10/100Mb	232 W x 187 H	221 W x 176 H	71	<b>£1,099.00</b>
<b>ETOP33C-0050</b>	10.4" TFT 64k colour 300cd/m <sup>2</sup>	VGA 640 x 480		287 W x 232 H	276 W x 221 H	91	<b>£1,649.00</b>

**TECHNICAL DATA**

Flash stored recipe memory	0 to 45°C operating temperature
1024 line event list	PLC Port - RS-232/RS-485/RS-422
1024 alarms	Auxiliary Port
24VDC, 0.7A	Dual driver
Weight ETOP20C approx 1.6 kg	IP65 Front panel
Weight ETOP33 approx 2.3 kg	

See the "UniOP Accessories and Options" data sheet for details of all communications and vision modules.



Lowfields Road Leeds LS12 6ET Tel: 0113 243 0203 Fax: 0113 242 0959	91 Holywell Road Sheffield S4 8AT Tel: 0114 243 1841 Fax: 0114 243 1032	Federation Way Gateshead NE11 9HL Tel: 0191 460 2233 Fax: 0191 460 1818	Eleventh Street Trafford Park Manchester M17 1SP Tel: 0161 876 4337 Fax: 0161 876 4339	80, Fifty Pitches Road Cardonald Park Glasgow G51 4EB Tel: 0141 892 0166 Fax: 0141 891 5036	Unit J Fryer's Close Walsall WS3 2XQ Tel: 01922 403426 Fax: 01922 497398
<b>email: sales@scatts.co.uk</b>			<b>web: www.scatts.co.uk</b>		