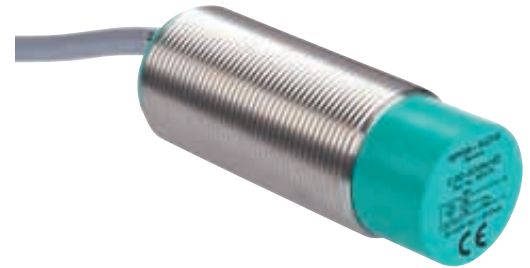




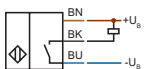
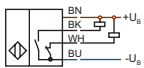
- * High grade stainless steel body
- * Ingress Protection IP67
- * Operating temperature -25°C to +70°C
- * LED status indicator
- * Short circuit and reverse polarity protection
- * Sensitivity adjuster for distance setting
- * Supplied complete with 2 body locknuts
- * CE Approval


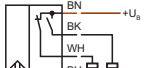
Pepperl & Fuchs

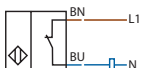
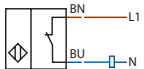
CJ Metal Capacitive Proximity Switches



2m Pre-Cabled Connection

CJ Capacitive Proximity Switches			10 - 30V DC	NPN	
Style	Part Number	Sensing Distance (mm)	Installation Mode	Body Size (mm)	
				Thread	Length
 Normally Open (N/O)	CJ8-18GM-E0	8.0	Non-Flush	M18 x 1.0	65
	CJ10-30GM-E0	10.0		M30 x 1.5	79
 Antivalent (N/O or N/C)	CJ10-30GM-A0	10.0	Non-Flush	M30 x 1.5	79

CJ Capacitive Proximity Switches			10 - 30V DC	PNP	
Style	Part Number	Sensing Distance (mm)	Installation Mode	Body Size (mm)	
				Thread	Length
 Normally Open (N/O)	CJ8-18GM-E2	8.0	Non-Flush	M18 x 1.0	65
	CJ10-30GM-E2	10.0		M30 x 1.5	79
 Antivalent (N/O or N/C)	CJ10-30GM-A2	10.0	Non-Flush	M30 x 1.5	79

CJ Capacitive Proximity Switches			20 - 253V AC	2 Wire AC	
Style	Part Number	Sensing Distance (mm)	Installation Mode	Body Size (mm)	
				Thread	Length
 Normally Open (N/O)	CJ10-30GM-WS	10.0	Non-Flush	M30 x 1.5	79
 Normally Closed (N/C)	CJ10-30GM-WO	10.0	Non-Flush	M30 x 1.5	79

Leeds
Tel: 0113 243 0203

Sheffield
Tel: 0114 243 1841

Gateshead
Tel: 0191 460 2233

Manchester
Tel: 0161 876 4337

Glasgow
Tel: 0141 892 0166

Walsall
Tel: 01922 403 426

e-mail: sales@scatts.co.uk

web: www.scatts.co.uk