

# Data sheet

Order No.: 1754481

Type: MSTB 2,5/ 4-ST

Plug component, Screw connection with tension sleeve



The figure shows a 10-position version of the product

## 1 Main features



• No. of pos.	4	• Nominal current	12 A
• Conductor cross section	2.5 mm <sup>2</sup>	• Nominal voltage	320 V
• Color	green	• Connection direction	0 °
• Pitch	5 mm	• Type of packaging	packed in cardboard
• Connection method	Screw connection with tension sleeve		

## 2 Your advantages

- ✓ Well-known connection principle allows worldwide use
- ✓ Low temperature rise, thanks to maximum contact force
- ✓ Allows connection of two conductors



Make sure you always use the latest documentation.  
It can be downloaded at: [phoenixcontact.net/product/1754481](http://phoenixcontact.net/product/1754481)

**1754481 MSTB 2,5/ 4-ST****3 Table of contents**

1	Main features.....	1
2	Your advantages .....	1
3	Table of contents .....	2
4	3D model in PDF can be activated (Acrobat Reader only).....	3
5	item properties.....	4
	5.1 Connection capacity .....	4
	5.2 Material data .....	4
6	Dimensions.....	4
	6.1 Dimensions for the product .....	5
7	Series drawing.....	6
8	Packaging information .....	7
9	Application.....	7
	9.1 Temperature limit values .....	7
10	Mechanical tests.....	8
	10.1 Termination and connection method.....	8
	10.2 Pull-out test .....	8
11	Electrical tests .....	9
	11.1 Electrical data .....	9
	11.2 Air and creepage distances .....	9
12	Current carrying capacity/derating curves .....	10
13	Environmental and durability tests .....	13
	13.1 Vibration test .....	13
14	Classification for connectors.....	13
15	Approvals .....	13
16	Commercial Data.....	15
17	corresponding headers.....	15
18	Accessories.....	15
19	Combination tests.....	17

1754481 MSTB 2,5/ 4-ST

**4 3D model in PDF can be activated (Acrobat Reader only)**



**1754481 MSTB 2,5/ 4-ST****5 item properties**

Order No.	1754481
Type	MSTB 2,5/ 4-ST
Type of contact	Female connector
Range of articles	MSTB 2,5/...ST
Pitch	5 mm
Number of positions	4
Connection method	Screw connection with tension sleeve
Drive form screw head	Slotted
Screw thread	M3
Tightening torque	0.5 Nm ... 0.6 Nm
Note on tightening torque	
Locking	without

**5.1 Connection capacity**

Conductor cross section, solid	0.2 mm <sup>2</sup> to 2.5 mm <sup>2</sup>
Conductor cross section, flexible	0.2 mm <sup>2</sup> to 2.5 mm <sup>2</sup>
Conductor cross section AWG/kcmil	24 to 12
2 conductors with same cross section, solid	0.2 mm <sup>2</sup> to 1 mm <sup>2</sup>
2 conductors with same cross section, stranded	0.2 mm <sup>2</sup> to 1.5 mm <sup>2</sup>
Conductor cross section flexible, with ferrule without plastic sleeve	0.25 mm <sup>2</sup> to 2.5 mm <sup>2</sup>
Conductor cross section flexible, with ferrule with plastic sleeve	0.25 mm <sup>2</sup> to 2.5 mm <sup>2</sup>
2 conductors with same cross section, stranded, with ferrule without plastic sleeve	0.25 mm <sup>2</sup> to 1 mm <sup>2</sup>
2 conductors with same cross section, stranded, with TWIN ferrules with plastic sleeve	0.5 mm <sup>2</sup> to 1.5 mm <sup>2</sup>
Cylindrical gauge a x b / diameter	2.8 mm x 2.4 mm / 2.5 mm
Stripping length	7 mm

**5.2 Material data**

<b>Material of metal parts</b>	
Note	WEEE/RoHS-compliant, whisker-free acc. to IEC 60068-2-82/JEDEC JESD 201
Contact material	Cu alloy
Terminal point surface	Sn 5 µm ... 7 µm
Surface contact area	Sn 5 µm ... 7 µm
Surface characteristics	hot-dip tin-plated
<b>Insulating material data</b>	
Insulating material	PA
CTI according to IEC 60112	600
Flammability rating according to UL 94	V0
Color	green (6021)
Glow wire flammability index GWFI according to EN 60695-2-12	850
Glow wire ignition temperature GWIT according to EN 60695-2-13	775
Temperature for the ball pressure test according to EN 60695-10-2	125 °C

**6 Dimensions**

**1754481 MSTB 2,5/ 4-ST**

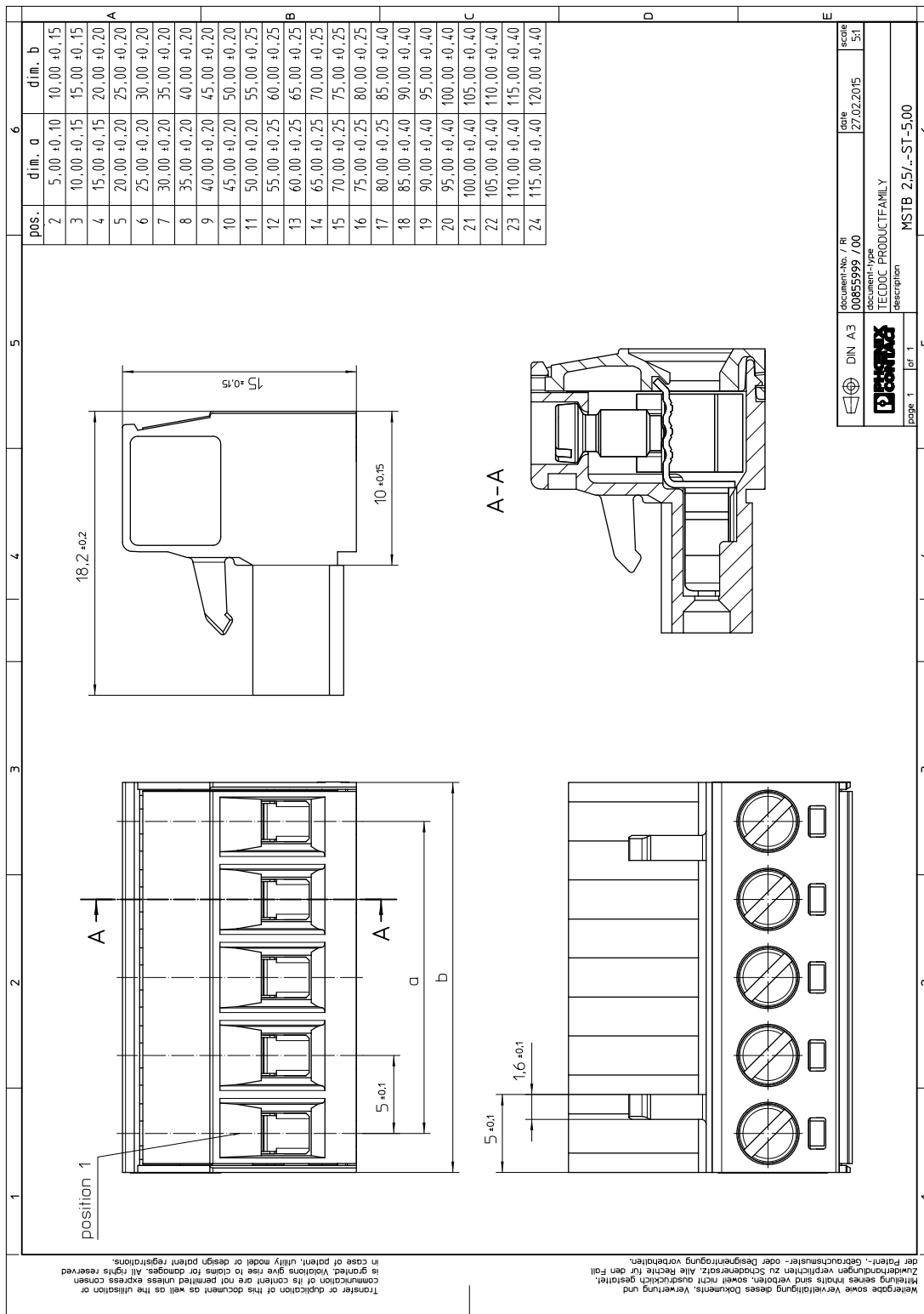
---

**6.1 Dimensions for the product**

Length	18.2 mm
Width	20 mm
Total height	15 mm
Dimension a	15 mm

1754481 MSTB 2,5/ 4-ST

7 Series drawing



**1754481 MSTB 2,5/ 4-ST****8 Packaging information**

Type of packaging	packed in cardboard
Pieces per package	100

**9 Application****9.1 Temperature limit values**

Ambient temperature (storage/transport)	-40 °C ... 70 °C
Ambient temperature (assembly)	-5 °C ... 100 °C
Ambient temperature (operation)	-40 °C (dependent on the derating curve)

**1754481 MSTB 2,5/ 4-ST****10 Mechanical tests**

Mechanical test group A	
Specification	IEC 61984:2008-10
Visual test	Test passed
Specification	IEC 60512-1-1:2002-02
Dimensional test	Test passed
Specification	IEC 60512-1-2:2002-02
Resistance of marking	Test passed
Specification	IEC 60068-2-70:1995-12
Insertion and withdrawal force	Test passed
Specification	IEC 60512-13-2:2006-02
No. of cycles	25
Insertion strength per pos. approx.	8 N
Withdraw strength per pos. approx.	7 N
Polarization and coding	Test passed
Specification	IEC 60512-13-5:2006-02
Test force	20 N
Contact retention in insert	Test passed
Specification	IEC 60512-15-1:2008-05
Test force per pos.	27 N

**10.1 Termination and connection method**

Specification	IEC 60999-1:1999-11
Check for damage to conductor or loosening	Test passed

**10.2 Pull-out test**

Termination and connection method: pull-out test	
Specification	IEC 60999-1:1999-11
Result	Test passed
Conductor cross section/conductor type/tractive force actual value	0.2 mm <sup>2</sup> / solid / > 10 N
Conductor cross section/conductor type/tractive force actual value	0.2 mm <sup>2</sup> / stranded / > 10 N
Conductor cross section/conductor type/tractive force actual value	2.5 mm <sup>2</sup> / solid / > 50 N
Conductor cross section/conductor type/tractive force actual value	2.5 mm <sup>2</sup> / stranded / > 50 N

**1754481 MSTB 2,5/ 4-ST****11 Electrical tests****11.1 Electrical data**

Rated current / conductor cross section	12 A / 2.5 mm <sup>2</sup>
Rated insulation voltage (III/2)	320 V
Rated surge voltage (III/2)	4 kV
Contact resistance	1.4 mΩ
Degree of pollution	2

**11.2 Air and creepage distances**

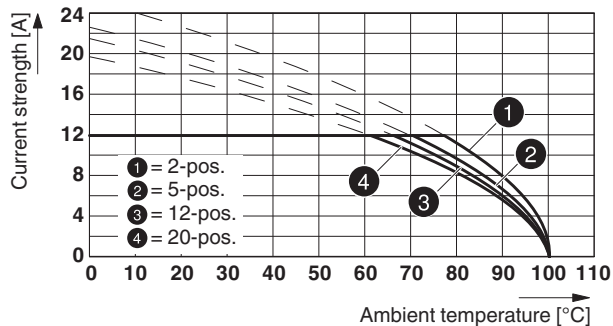
Component	Plug component		
Specification	IEC 60664-1:2007-04		
Mains type	unearthed mains		
Insulating material group	I		
Comparative tracking index (IEC 60112:2003-01)	CTI 600		
Rated insulation voltage	250 V	320 V	630 V
Rated surge voltage	4 kV	4 kV	4 kV
Degree of pollution	3	2	2
Overtoltage category	III	III	II
Minimum clearance case A (inhomogeneous field)	3 mm	3 mm	3 mm
Minimum value of the creepage path requirement in acc. with table	3.2 mm	3 mm	3.2 mm

1754481 MSTB 2,5/ 4-ST

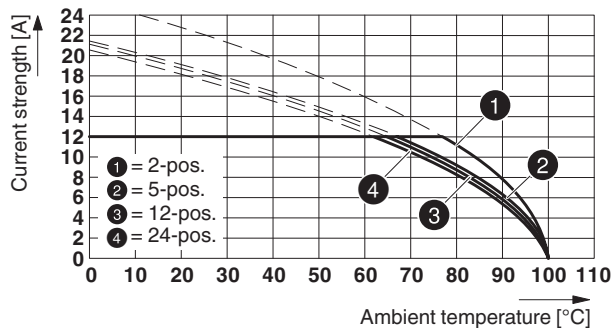
12 Current carrying capacity/derating curves

Specification	IEC 61984:2008-10
Note	Representation based on IEC 60512-5-2:2002-02
Reduction factor	0.8
Number of positions	See diagram
Conductor cross section	2.5 mm <sup>2</sup>

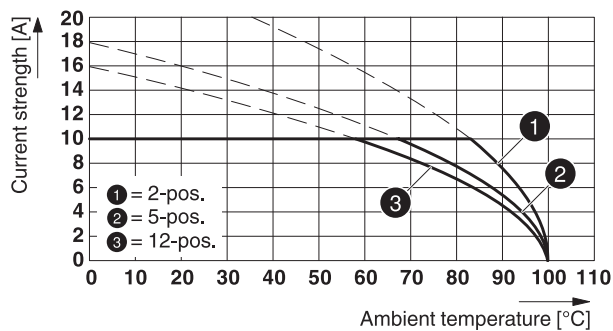
Type: MSTB 2,5/...-ST with MSTBW 2,5/...-G

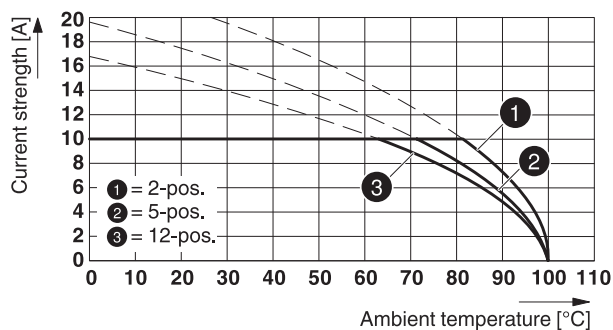
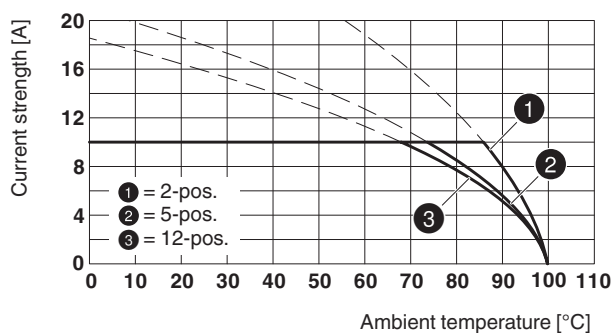


Type: MSTB 2,5/...-ST with MSTBA 2,5/...-G



Type: MSTB 2,5/...-ST with MDSTB 2,5/...-G



**1754481 MSTB 2,5/ 4-ST****Type: MSTB 2,5/...-ST with MDSTBW 2,5/...-G****Type: MSTB 2,5/...-ST with MDSTBV 2,5/...-G****Type: MSTB 2,5/...-ST with MSTBVA 2,5/...-G**

86480\_2000\_en

**Type: MSTB 2,5/...-ST with MSTBO 2,5/...-G1R**

86551\_2000\_en

**Type: MSTB 2,5/...-ST with SMSTBA 2,5/...-G**

86580\_2000\_en

**Type: MSTB 2,5/...-ST with MSTBO 2,5/...-G1L**

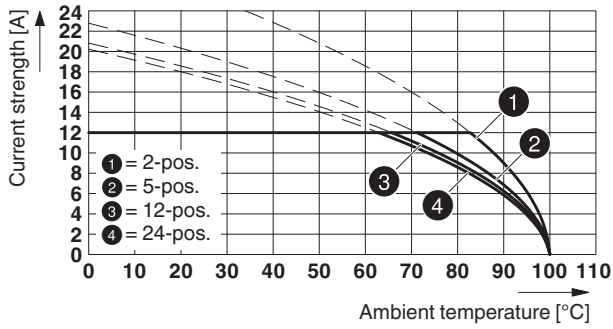
86639\_2000\_en

**Type: MSTB 2,5/...-ST(-5,08) with EMSTBVA 2,5/...-G(-5,08)**

86981\_1000\_en

**1754481 MSTB 2,5/ 4-ST**

Type: MSTB 2,5/...-STF with CCV 2,5/...-GF-LR P20 THR




**1754481 MSTB 2,5/ 4-ST****13 Environmental and durability tests****13.1 Vibration test**

Specification	IEC 60068-2-6:2007-12
Result	Test passed
Frequency	10 - 150 - 10 Hz
Sweep speed	1 octave/min
Amplitude	0.35 mm (10 - 60.1 Hz)
Acceleration	5 g (60.1 - 150 Hz)
Test duration per axis	2.5 h
Test directions	X-, Y- and Z-axis


**14 Classification for connectors**

Specification	IEC 61984:2008-10
Main features	Connectors without switching capacity (COC)
Construction form	Fixed connectors
Strain relief elements	without strain relief
Connection method	Can be reconnected
Protection against electric shock	Not encapsulated - touch-proof when inserted
Protective conductor	without PE
Lock	no
Connection method	Screw terminal points

**15 Approvals**

CSA 				
Use group	B	D		
mm <sup>2</sup> /AWG/kcmil	28-12	28-12		
Voltage	300 V	300 V		
Current	10 A	10 A		

VDE Gutachten mit Fertigungsüberwachung 				
mm <sup>2</sup> /AWG/kcmil	0.2-2.5			
Voltage	250 V			
Current	12 A			

IECEE CB Scheme 				
mm <sup>2</sup> /AWG/kcmil	0.2-2.5			
Voltage	250 V			
Current	12 A			

cULus Recognized 				
Use group	B	D		
mm <sup>2</sup> /AWG/kcmil	30-12	30-12		
Voltage	300 V	150 V		
Current	15 A	15 A		

2017-09-29

Product version 04

Document revision 0

**1754481 MSTB 2,5/ 4-ST**

---

EAC 

**1754481 MSTB 2,5/ 4-ST****16 Commercial Data**

Order No.	1754481
Type	MSTB 2,5/ 4-ST
Pieces per package	100
Net weight	6.79 g
GTIN	4017918028657
	Information that applies locally, see link on page 1
Country of origin	Information that applies locally, see link on page 1

**17 corresponding headers**

Order No.	Type
1736098	MSTBW 2,5/ 4-G
1736690	MDSTB 2,5/ 4-G1
1736739	MDSTBV 2,5/ 4-G1
1753479	MSTBV 2,5/ 4-G
1754478	MSTB 2,5/ 4-G
1755532	MSTBVA 2,5/ 4-G
1757491	MSTBA 2,5/ 4-G
1768202	MSTB 2,5/ 4-G-LA
1769256	SMSTB 2,5/ 4-G
1769829	SMSTBA 2,5/ 4-G
1770504	MSTBA 2,5/ 4-G-LA
1845808	MDSTBVA 2,5/ 4-G
1845950	MDSTBV 2,5/ 4-G
1846386	MDSTB 2,5/ 4-G
1846535	MDSTBA 2,5/ 4-G
1846836	MDSTBW 2,5/ 4-G
1861060	MSTBO 2,5/ 4-G1L
1861073	MSTBO 2,5/ 4-G1R
1899867	EMSTBA 2,5/ 4-G
1914878	EMSTBVA 2,5/ 4-G
1927519	MSTBA 2,5/ 4-G THT
1941029	MSTBVA 2,5/ 4-G THT
1963890	MSTB 2,5/ 4-G THT
1963968	MSTBV 2,5/ 4-G THT
2697194	MSTBO 2,5/ 4-G1L THRR44 BK
2697204	MSTBO 2,5/ 4-G1R THRR44 BK
2907774	MSTBO 2,5/ 4-G1L KMGY
2907787	MSTBO 2,5/ 4-G1R KMGY

**18 Accessories**

Description	Order No.	Type
Actuation tool, for ST terminal blocks, insulated, also suitable for use as a bladed screwdriver, size: 0.6 x 3.5 x 100 mm, 2-component grip, with non-slip grip	1205053	SZS 0,6X3,5
	0804183	SK 5/3,8:FORTL.ZAHLEN

2017-09-29

Product version 04

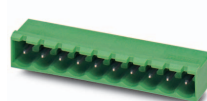
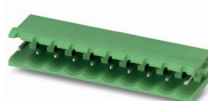
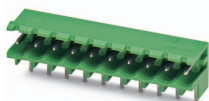
Document revision 0

**1754481 MSTB 2,5/ 4-ST**

Description	Order No.	Type
	1803882	KGG-MSTB 2,5/ 4
Coding profile, is inserted into the slot on the plug or inverted header, red insulating material	1734634	CP-MSTB
Insertion bridge, fully insulated, for connectors with 5.0 or 5.08 mm pitch, no. of positions: 2	1733169	EBP 2- 5

1754481 MSTB 2,5/ 4-ST

19 Combination tests



**MSTB 2,5/..-ST**

**MSTBW 2,5/..-G**

**MSTB 2,5/..-G**

**MSTBA 2,5/..-G**

**SMSTB 2,5/..-G**

Specification

IEC 61984

IEC 61984

IEC 61984

IEC 61984

**Mechanical tests (A)**

Insertion/withdrawal force per position

approx. 8 N / 7 N

approx. 8 N / 6 N

Polarization when inserted  
Requirement >20 N

Test passed

Test passed

Contact holder in insert  
Requirements >20 N

Test passed

Test passed

**Durability tests (B)**

Contact resistance R<sub>1</sub>

1.4 mΩ

1.4 mΩ

Insertion/withdrawal cycles

25

25

Contact resistance R<sub>2</sub>

1.5 mΩ

1.5 mΩ

Rated impulse voltage at sea level  
Voltage waveform ≥ (1.2/50 μs)

4.8 kV

4.8 kV

Power-frequency withstand voltage  
Voltage waveform ≥ (50/60 Hz)

2.21 kV

2.21 kV

Insulation resistance  
Requirements > 5 MΩ

11 TΩ

> 1 TΩ

**Thermal tests (C)**

Tested number of positions

20

24

Tested conductor cross section

2.5 mm<sup>2</sup>

2.5 mm<sup>2</sup>

Test current

12 A DC

12 A

Upper limiting temperature  
Requirements < 100°C

Test passed

Test passed

**Climatic tests (D)**

Test sequence 1: low temperature storage

-40 °C/2 h

-40 °C/2 h

Test sequence 2: heat storage

100 °C/168 h

100 °C/168 h

Test sequence 3: noxious gas storage  
(ISO 6988)

0.2 dm<sup>3</sup> SO<sub>2</sub> on 300 dm<sup>3</sup>/  
40 °C/1 cycle

0.2 dm<sup>3</sup> SO<sub>2</sub> on 300 dm<sup>3</sup>/  
40 °C/1 cycle

Rated impulse voltage at sea level  
Voltage waveform ≥ (1.2/50 μs)

4.8 kV

4.8 kV

Power-frequency withstand voltage  
Voltage waveform ≥ (50/60 Hz)

2.21 kV

2.21 kV

**Environmental and endurance tests (E)**

Specification

IEC 61984:2008-10

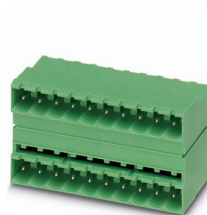
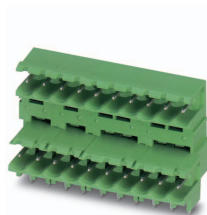
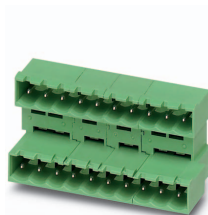
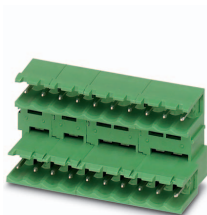
IEC 61984:2008-10

Degree of protection

Finger safety with IP20  
test finger

Finger safety with IP20  
test finger

**1754481 MSTB 2,5/ 4-ST**



**MSTB 2,5/..-ST**

**MDSTB 2,5/..-G**

**MDSTBA 2,5/..-G**

**MDSTBW 2,5/..-G**

**MDSTB 2,5/..-G1**

Specification

IEC 61984

IEC 61984

IEC 61984

IEC 61984

**Mechanical tests (A)**

Insertion/withdrawal force per position

approx. 8 N / 6 N

approx. 8 N / 6 N

Polarization when inserted  
Requirement >20 N

Test passed

Test passed

Contact holder in insert  
Requirements >20 N

Test passed

Test passed

**Durability tests (B)**

Contact resistance R<sub>1</sub>

1.8 mΩ

1.7 mΩ

Insertion/withdrawal cycles

25

25

Contact resistance R<sub>2</sub>

1.8 mΩ

1.8 mΩ

Rated impulse voltage at sea level  
Voltage waveform ≥ (1.2/50 μs)

4.8 kV

4.8 kV

Power-frequency withstand voltage  
Voltage waveform ≥ (50/60 Hz)

2.21 kV

2.21 kV

Insulation resistance  
Requirements > 5 MΩ

> 80 GΩ

> 50 GΩ

**Thermal tests (C)**

Tested number of positions

12

12

Tested conductor cross section

2.5 mm<sup>2</sup>

2.5 mm<sup>2</sup>

Test current

10 A

10 A

Upper limiting temperature  
Requirements < 100°C

Test passed

Test passed

**Climatic tests (D)**

Test sequence 1: low temperature storage

-40 °C/2 h

-40 °C/2 h

Test sequence 2: heat storage

100 °C/168 h

100 °C/168 h

Test sequence 3: noxious gas storage  
(ISO 6988)

0.2 dm<sup>3</sup> SO<sub>2</sub> on 300 dm<sup>3</sup>/  
40 °C/1 cycle

0.2 dm<sup>3</sup> SO<sub>2</sub> on 300 dm<sup>3</sup>/  
40 °C/1 cycle

Rated impulse voltage at sea level  
Voltage waveform ≥ (1.2/50 μs)

4.8 kV

4.8 kV

Power-frequency withstand voltage  
Voltage waveform ≥ (50/60 Hz)

2.21 kV

2.21 kV

**Environmental and endurance tests (E)**

Specification

IEC 61984:2008-10

IEC 61984:2008-10

Degree of protection

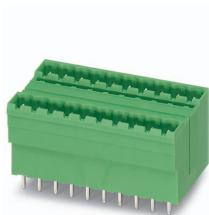
Finger safety with IP20  
test finger

Finger safety with IP20  
test finger

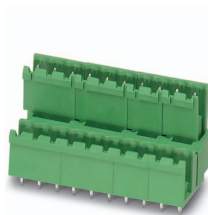
**1754481 MSTB 2,5/ 4-ST**



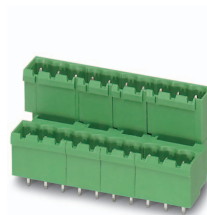
**MSTB 2,5/..-ST**



**MDSTBV 2,5/..-G1**



**MDSTBV 2,5/..-G**



**MDSTBVA 2,5/..-G**



**DFK-MSTB 2,5/..-G**

Specification	IEC 61984	IEC 61984	IEC 61984	IEC 61984
<b>Mechanical tests (A)</b>				
Insertion/withdrawal force per position		approx. 8 N / 6 N		
Polarization when inserted Requirement >20 N		Test passed		
Contact holder in insert Requirements >20 N		Test passed		
<b>Durability tests (B)</b>				
Insertion/withdrawal cycles		25		
Rated impulse voltage at sea level Voltage waveform $\geq (1.2/50 \mu s)$		4.8 kV		
Power-frequency withstand voltage Voltage waveform $\geq (50/60 \text{ Hz})$		2.21 kV		
Insulation resistance Requirements > 5 M $\Omega$		> 0.2 T $\Omega$		
<b>Thermal tests (C)</b>				
Tested number of positions		12		
Tested conductor cross section		2.5 mm <sup>2</sup>		
Test current		10 A		
Upper limiting temperature Requirements < 100°C		Test passed		
<b>Climatic tests (D)</b>				
Test sequence 1: low temperature storage		-40 °C/2 h		
Test sequence 2: heat storage		100 °C/168 h		
Test sequence 3: noxious gas storage (ISO 6988)		0.2 dm <sup>3</sup> SO <sub>2</sub> on 300 dm <sup>3</sup> / 40 °C/1 cycle		
Rated impulse voltage at sea level Voltage waveform $\geq (1.2/50 \mu s)$		4.8 kV		
Power-frequency withstand voltage Voltage waveform $\geq (50/60 \text{ Hz})$		2.21 kV		
<b>Environmental and endurance tests (E)</b>				
Specification		IEC 61984:2008-10		
Degree of protection		Finger safety with IP20 test finger		

**1754481 MSTB 2,5/ 4-ST**



**MSTB 2,5/..-ST**

**MSTBVA 2,5/..-G**

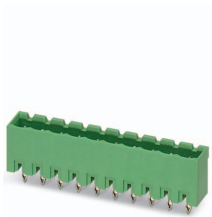
**MSTBO 2,5/..-G1R**

**SMSTBA 2,5/..-G**

**MSTBO 2,5/..-G1L**

Specification	IEC 61984	IEC 61984	IEC 61984	IEC 61984
<b>Mechanical tests (A)</b>				
Insertion/withdrawal force per position	approx. 8 N / 6 N	approx. 8 N / 6 N	approx. 8 N / 6 N	approx. 8 N / 6 N
Polarization when inserted Requirement >20 N	Test passed	Test passed	Test passed	Test passed
Contact holder in insert Requirements >20 N	Test passed	Test passed	Test passed	Test passed
<b>Durability tests (B)</b>				
Contact resistance R <sub>1</sub>	2.5 mΩ	1.6 mΩ	1.3 mΩ	1.5 mΩ
Insertion/withdrawal cycles	25	25	25	25
Contact resistance R <sub>2</sub>	2.5 mΩ	1.6 mΩ	1.4 mΩ	1.5 mΩ
Rated impulse voltage at sea level Voltage waveform ≥ (1.2/50 μs)	4.8 kV	4.8 kV	4.8 kV	4.8 kV
Power-frequency withstand voltage Voltage waveform ≥ (50/60 Hz)	2.21 kV	2.21 kV	2.21 kV	2.21 kV
Insulation resistance Requirements > 5 MΩ	> 0.4 TΩ	> 0.3 TΩ	> 0.1 TΩ	> 0.3 TΩ
<b>Thermal tests (C)</b>				
Tested number of positions	24	4	24	4
Tested conductor cross section	2.5 mm <sup>2</sup>	2.5 mm <sup>2</sup>	2.5 mm <sup>2</sup>	2.5 mm <sup>2</sup>
Test current				
Upper limiting temperature Requirements < 100°C	Test passed	Test passed	Test passed	Test passed
<b>Climatic tests (D)</b>				
Test sequence 1: low temperature storage	-40 °C/2 h	-40 °C/2 h	-40 °C/2 h	-40 °C/2 h
Test sequence 2: heat storage	100 °C/168 h	100 °C/168 h	100 °C/168 h	100 °C/168 h
Test sequence 3: noxious gas storage (ISO 6988)	0.2 dm <sup>3</sup> SO <sub>2</sub> on 300 dm <sup>3</sup> / 40 °C/1 cycle	0.2 dm <sup>3</sup> SO <sub>2</sub> on 300 dm <sup>3</sup> / 40 °C/1 cycle	0.2 dm <sup>3</sup> SO <sub>2</sub> on 300 dm <sup>3</sup> / 40 °C/1 cycle	0.2 dm <sup>3</sup> SO <sub>2</sub> on 300 dm <sup>3</sup> / 40 °C/1 cycle
Rated impulse voltage at sea level Voltage waveform ≥ (1.2/50 μs)	4.8 kV	4.8 kV	4.8 kV	4.8 kV
Power-frequency withstand voltage Voltage waveform ≥ (50/60 Hz)	2.21 kV	2.21 kV	2.21 kV	2.21 kV
<b>Environmental and endurance tests (E)</b>				
Specification	IEC 61984:2008-10	IEC 61984:2008-10	IEC 61984:2008-10	IEC 61984:2008-10
Degree of protection	Finger safety with IP20 test finger	Finger safety with IP20 test finger	Finger safety with IP20 test finger	Finger safety with IP20 test finger

**1754481 MSTB 2,5/ 4-ST**



**MSTB 2,5/..-ST**

**EMSTBVA 2,5/..-G**

**CCVA 2,5/..-G**

Specification

DIN VDE 0627 (in parts)

IEC 61984

**Mechanical tests (A)**

Insertion/withdrawal force per position

approx. 5 N / 4 N

approx. 8 N / 6 N

Polarization when inserted  
Requirement >20 N

Test passed

Contact holder in insert  
Requirements >20 N

Test passed

**Durability tests (B)**

Contact resistance R<sub>1</sub>

1.1 mΩ

1.2 mΩ

Insertion/withdrawal cycles

100

25

Contact resistance R<sub>2</sub>

1.5 mΩ

1.2 mΩ

Rated impulse voltage at sea level  
Voltage waveform ≥ (1.2/50 μs)

4.8 kV

4.8 kV

Power-frequency withstand voltage  
Voltage waveform ≥ (50/60 Hz)

2.21 kV

2.21 kV

Insulation resistance  
Requirements > 5 MΩ

> 8 TΩ

> 1 TΩ

**Thermal tests (C)**

Tested number of positions

6

24

Tested conductor cross section

2.5 mm<sup>2</sup>

2.5 mm<sup>2</sup>

Test current

12 A

12 A

Upper limiting temperature  
Requirements < 100°C

Test passed

**Climatic tests (D)**

Test sequence 1: low temperature storage

-40 °C/2 h

-40 °C/2 h

Test sequence 2: heat storage

100 °C/168 h

100 °C/168 h

Test sequence 3: noxious gas storage  
(ISO 6988)

0.2 dm<sup>3</sup> SO<sub>2</sub> on 300 dm<sup>3</sup>/  
40 °C/1 cycle

0.2 dm<sup>3</sup> SO<sub>2</sub> on 300 dm<sup>3</sup>/  
40 °C/1 cycle

Rated impulse voltage at sea level  
Voltage waveform ≥ (1.2/50 μs)

4.8 kV

4.8 kV

Power-frequency withstand voltage  
Voltage waveform ≥ (50/60 Hz)

2.21 kV

2.21 kV

**Environmental and endurance tests (E)**

Specification

IEC 61984:2008-10

IEC 61984:2008-10

Degree of protection

Finger safety with IP20  
test finger

Finger safety with IP20  
test finger



# SCATTERGOOD & JOHNSON LTD

ELECTRICAL ENGINEERING & FLUID CONTROL DISTRIBUTORS

Est.1899

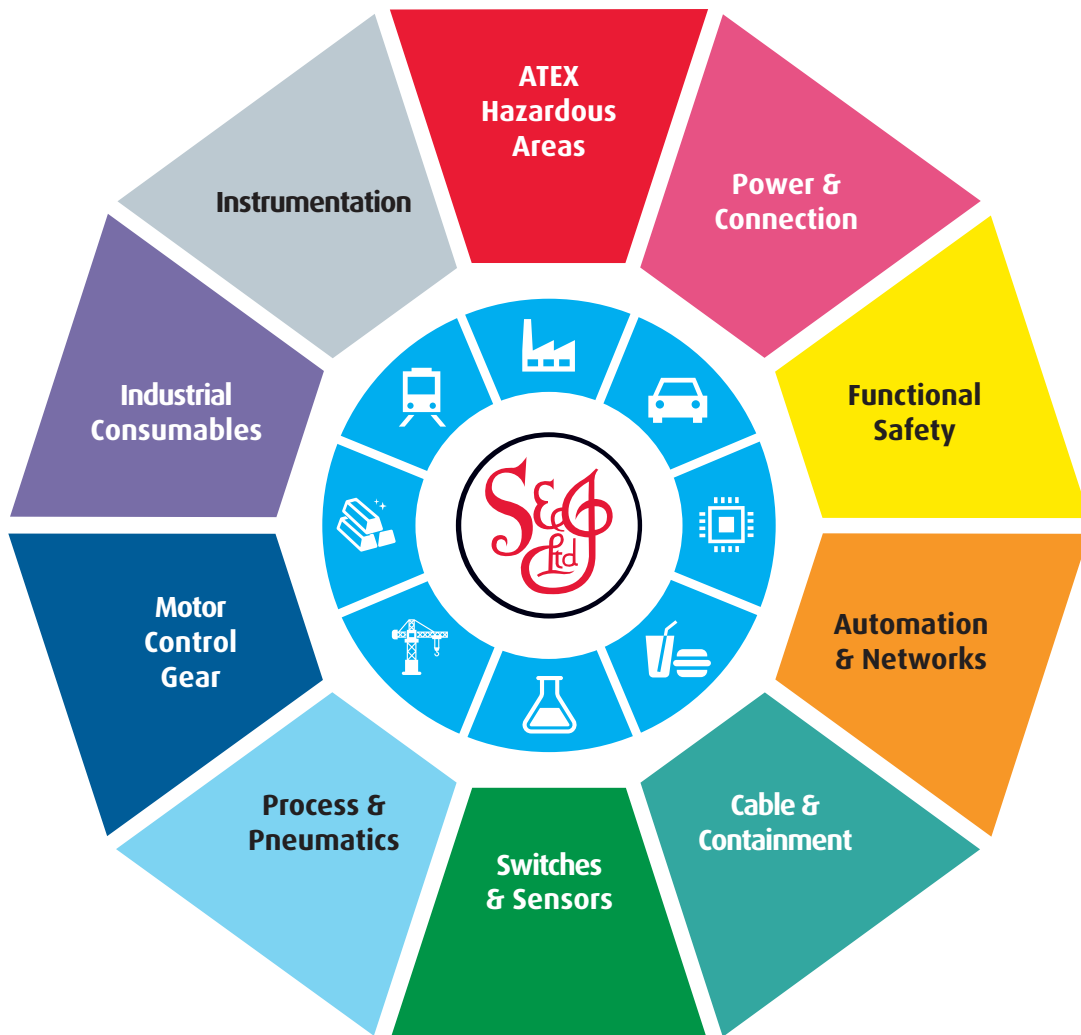
At Scattergood & Johnson Ltd, we pride ourselves on being a technical distributor to specialist industries.

Working with a range of quality product suppliers across a number of specialist markets, we are not your average 'box shifter' - we are your technical and supply chain partner.

We fully support every product we sell - for free! Our internal team and external sales engineers can answer any product or application question, no matter the complexity.

Backing up this technical ability is a range of 50,000+ products available from stock for nationwide next day delivery (same day if required!), or you can collect what you need from any of our trade counters around the UK.

Select your specialist interest below to learn more about how we can help.



Online, In Branch and On the Road - Scattergood & Johnson Ltd, there when you need us.

# [www.scatts.co.uk](http://www.scatts.co.uk)