

Data sheet

Order No.: 1757035

Type: MSTB 2,5/ 4-ST-5,08

Plug component, Screw connection with tension sleeve



The figure shows a 10-position version of the product

1 Main features



| | | | |
|---------------------------|--------------------------------------|------------------------|---------------------|
| • No. of pos. | 4 | • Nominal current | 12 A |
| • Conductor cross section | 2.5 mm ² | • Nominal voltage | 320 V |
| • Color | green | • Connection direction | 0 ° |
| • Pitch | 5.08 mm | • Type of packaging | packed in cardboard |
| • Connection method | Screw connection with tension sleeve | | |

2 Your advantages

- ✓ Well-known connection principle allows worldwide use
- ✓ Low temperature rise, thanks to maximum contact force
- ✓ Allows connection of two conductors



Make sure you always use the latest documentation.

It can be downloaded at: phoenixcontact.net/product/1757035

1757035 MSTB 2,5/ 4-ST-5,08**3 Table of contents**

| | | |
|----|---|----|
| 1 | Main features..... | 1 |
| 2 | Your advantages | 1 |
| 3 | Table of contents | 2 |
| 4 | 3D model in PDF can be activated (Acrobat Reader only)..... | 3 |
| 5 | item properties..... | 4 |
| | 5.1 Connection capacity | 4 |
| | 5.2 Material data | 4 |
| 6 | Dimensions..... | 4 |
| | 6.1 Dimensions for the product | 5 |
| 7 | Series drawing..... | 6 |
| 8 | Packaging information | 7 |
| 9 | Application..... | 7 |
| | 9.1 Temperature limit values | 7 |
| 10 | Mechanical tests..... | 8 |
| | 10.1 Termination and connection method..... | 8 |
| | 10.2 Pull-out test | 8 |
| 11 | Electrical tests | 9 |
| | 11.1 Electrical data | 9 |
| | 11.2 Air and creepage distances | 9 |
| 12 | Current carrying capacity/derating curves | 10 |
| 13 | Environmental and durability tests | 13 |
| | 13.1 Vibration test | 13 |
| 14 | Classification for connectors..... | 13 |
| 15 | Approvals | 13 |
| 16 | Commercial Data..... | 15 |
| 17 | corresponding headers..... | 15 |
| 18 | Accessories..... | 15 |
| 19 | Combination tests..... | 17 |

1757035 MSTB 2,5/ 4-ST-5,08

4 3D model in PDF can be activated (Acrobat Reader only)



1757035 MSTB 2,5/ 4-ST-5,08**5 item properties**

| | |
|-----------------------|--------------------------------------|
| Order No. | 1757035 |
| Type | MSTB 2,5/ 4-ST-5,08 |
| Type of contact | Female connector |
| Range of articles | MSTB 2,5/...ST |
| Pitch | 5.08 mm |
| Number of positions | 4 |
| Connection method | Screw connection with tension sleeve |
| Drive form screw head | Slotted |
| Screw thread | M3 |
| Tightening torque | 0.5 Nm ... 0.6 Nm |
| Locking | without |

5.1 Connection capacity

| | |
|--|---|
| Conductor cross section, solid | 0.2 mm ² to 2.5 mm ² |
| Conductor cross section, flexible | 0.2 mm ² to 2.5 mm ² |
| Conductor cross section AWG/kcmil | 24 to 12 |
| 2 conductors with same cross section, solid | 0.2 mm ² to 1 mm ² |
| 2 conductors with same cross section, stranded | 0.2 mm ² to 1.5 mm ² |
| Conductor cross section flexible, with ferrule without plastic sleeve | 0.25 mm ² to 2.5 mm ² |
| Conductor cross section flexible, with ferrule with plastic sleeve | 0.25 mm ² to 2.5 mm ² |
| 2 conductors with same cross section, stranded, with ferrule without plastic sleeve | 0.25 mm ² to 1 mm ² |
| 2 conductors with same cross section, stranded, with TWIN ferrules with plastic sleeve | 0.5 mm ² to 1.5 mm ² |
| Cylindrical gauge a x b / diameter | 2.8 mm x 2.4 mm / 2.5 mm |
| Stripping length | 7 mm |

5.2 Material data

| | |
|---|---|
| Material of metal parts | |
| Note | WEEE/RoHS-compliant, whisker-free acc. to IEC 60068-2-82/JEDEC JESD 201 |
| Contact material | Cu alloy |
| Terminal point surface | Sn 5 µm ... 7 µm |
| Surface contact area | Sn 5 µm ... 7 µm |
| Surface characteristics | hot-dip tin-plated |
| Insulating material data | |
| Insulating material | PA |
| CTI according to IEC 60112 | 600 |
| Flammability rating according to UL 94 | V0 |
| Color | green (6021) |
| Glow wire flammability index GWFI according to EN 60695-2-12 | 850 |
| Glow wire ignition temperature GWIT according to EN 60695-2-13 | 775 |
| Temperature for the ball pressure test according to EN 60695-10-2 | 125 °C |

6 Dimensions

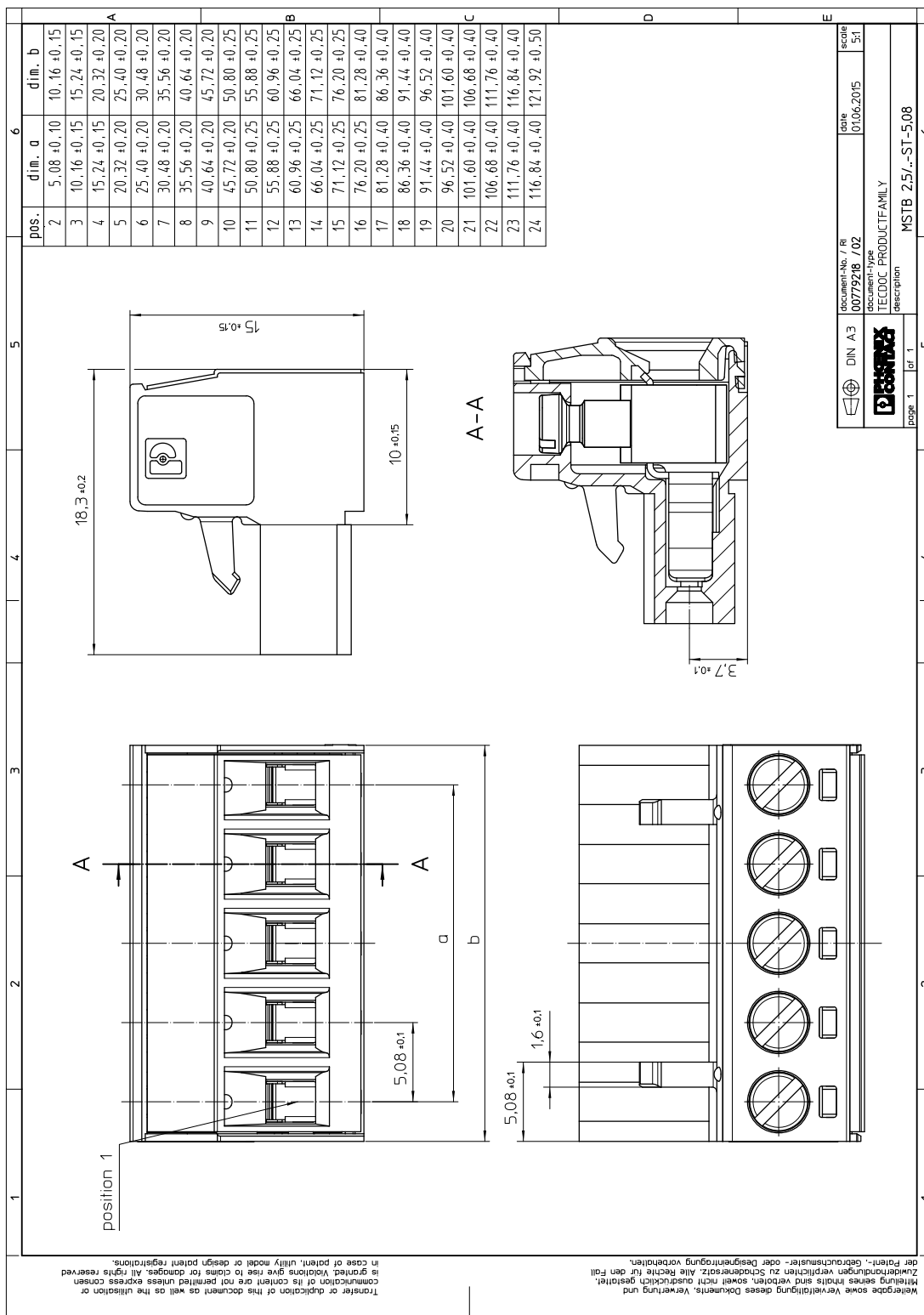
1757035 MSTB 2,5/ 4-ST-5,08

6.1 Dimensions for the product

| | |
|--------------|----------|
| Length | 18.3 mm |
| Width | 20.32 mm |
| Total height | 15 mm |
| Dimension a | 15.24 mm |

1757035 MSTB 2,5/ 4-ST-5,08

7 Series drawing



1757035 MSTB 2,5/ 4-ST-5,08**8 Packaging information**

| | |
|--------------------|---------------------|
| Type of packaging | packed in cardboard |
| Pieces per package | 100 |

9 Application**9.1 Temperature limit values**

| | |
|---|--|
| Ambient temperature (storage/transport) | -40 °C ... 70 °C |
| Ambient temperature (assembly) | -5 °C ... 100 °C |
| Ambient temperature (operation) | -40 °C (dependent on the derating curve) |

1757035 MSTB 2,5/ 4-ST-5,08**10 Mechanical tests**

| Mechanical test group A | |
|-------------------------------------|------------------------|
| Specification | IEC 61984:2008-10 |
| Visual test | Test passed |
| Specification | IEC 60512-1-1:2002-02 |
| Dimensional test | Test passed |
| Specification | IEC 60512-1-2:2002-02 |
| Resistance of marking | Test passed |
| Specification | IEC 60068-2-70:1995-12 |
| Insertion and withdrawal force | Test passed |
| Specification | IEC 60512-13-2:2006-02 |
| No. of cycles | 25 |
| Insertion strength per pos. approx. | 8 N |
| Withdraw strength per pos. approx. | 6 N |
| Polarization and coding | Test passed |
| Specification | IEC 60512-13-5:2006-02 |
| Test force | 20 N |
| Contact retention in insert | Test passed |
| Specification | IEC 60512-15-1:2008-05 |
| Test force per pos. | 27 N |

10.1 Termination and connection method

| | |
|--|---------------------|
| Specification | IEC 60999-1:1999-11 |
| Check for damage to conductor or loosening | Test passed |

10.2 Pull-out test

| Termination and connection method: pull-out test | |
|--|---|
| Specification | IEC 60999-1:1999-11 |
| Result | Test passed |
| Conductor cross section/conductor type/tractive force actual value | 0.2 mm ² / solid / > 10 N |
| Conductor cross section/conductor type/tractive force actual value | 0.2 mm ² / stranded / > 10 N |
| Conductor cross section/conductor type/tractive force actual value | 2.5 mm ² / solid / > 50 N |
| Conductor cross section/conductor type/tractive force actual value | 2.5 mm ² / stranded / > 50 N |
| Conductor cross section/conductor type/tractive force actual value | AWG 12 / stranded / > 60 N |

1757035 MSTB 2,5/ 4-ST-5,08**11 Electrical tests****11.1 Electrical data**

| | |
|---|----------------------------|
| Rated current / conductor cross section | 12 A / 2.5 mm ² |
| Rated insulation voltage (III/2) | 320 V |
| Rated surge voltage (III/2) | 4 kV |
| Contact resistance | 1.3 mΩ |
| Degree of pollution | 2 |

11.2 Air and creepage distances

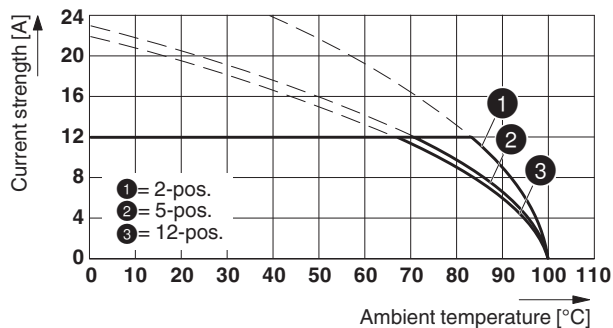
| | | | |
|---|---------------------|-------|--------|
| Component | Plug component | | |
| Specification | IEC 60664-1:2007-04 | | |
| Mains type | unearthed mains | | |
| Insulating material group | I | | |
| Comparative tracking index (IEC 60112:2003-01) | CTI 600 | | |
| Rated insulation voltage | 250 V | 320 V | 630 V |
| Rated surge voltage | 4 kV | 4 kV | 4 kV |
| Degree of pollution | 3 | 2 | 2 |
| Overvoltage category | III | III | II |
| Minimum clearance case A (inhomogeneous field) | 3 mm | 3 mm | 3 mm |
| Minimum value of the creepage path requirement in acc. with table | 3.2 mm | 3 mm | 3.2 mm |

1757035 MSTB 2,5/ 4-ST-5,08

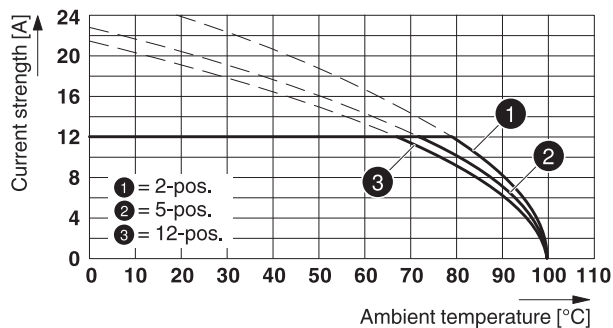
12 Current carrying capacity/derating curves

| | |
|-------------------------|---|
| Specification | IEC 61984:2008-10 |
| Note | Representation based on IEC 60512-5-2:2002-02 |
| Reduction factor | 0.8 |
| Number of positions | See diagram |
| Conductor cross section | 2.5 mm ² |

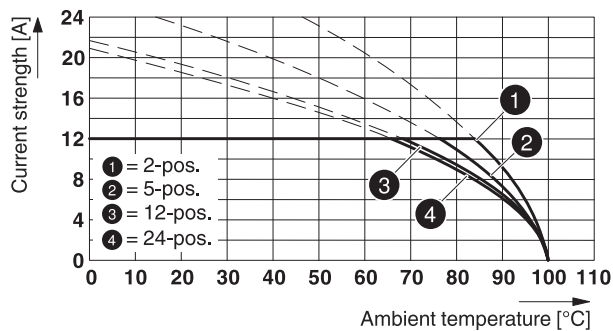
Type: MSTB 2,5/...-ST-5,08 with CC 2,5/...-G-5,08 P26THR



Type: MSTB 2,5/...-ST-5,08 with CCV 2,5/...-G-5,08 P26THR

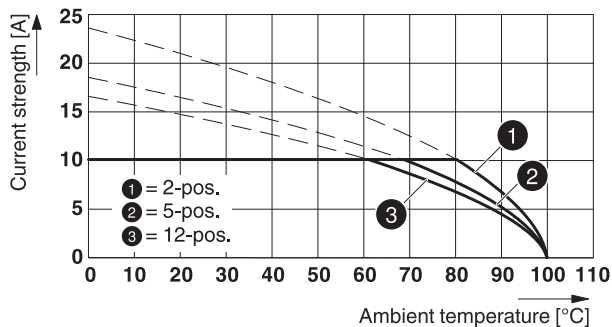


Type: MSTB 2,5/...-ST-5,08 with CCVA 2,5/...-G-5,08 P26THR

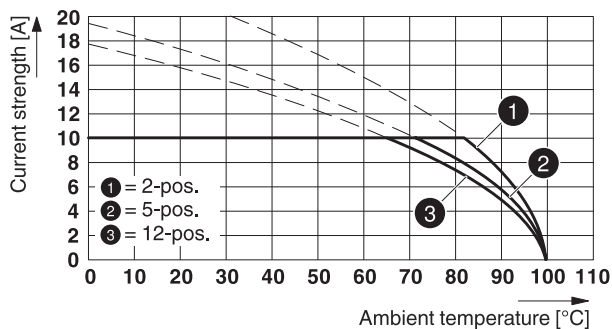


1757035 MSTB 2,5/ 4-ST-5,08

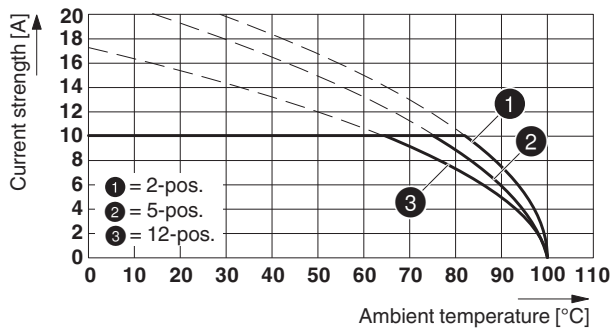
Type: MSTB 2,5/...-ST-5,08 with MDSTB 2,5/...-G-5,08



Type: MSTB 2,5/...-ST-5,08 with MDSTBA 2,5/...-G-5,08



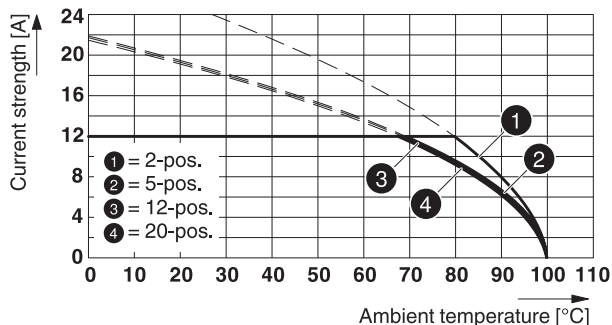
Type: MSTB 2,5/...-ST-5,08 with MDSTBW 2,5/...-G-5,08



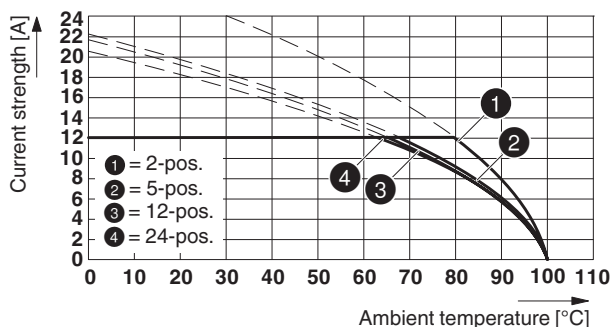
Type: MSTB 2,5/...-ST-5,08 with MDSTBV 2,5/...-G-5,08

1757035 MSTB 2,5/ 4-ST-5,08

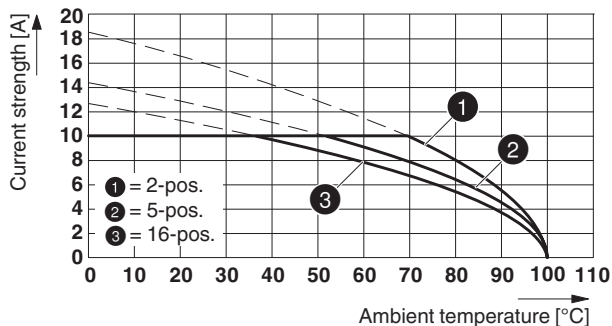
Type: MSTB 2,5/...-ST-5,08 with MVSTBU 2,5/...-GB-5,08



Type: MSTB 2,5/...-ST-5,08 with MSTB 2,5/...-G-5,08



Type: MSTBP 2,5/...-ST-5,08 with MDSTBVA 2,5/...-G-5,08



Type: MSTB 2,5/...-ST(-5,08) with EMSTBVA 2,5/...-G(-5,08)

86981_1000_en

Type: MSTB 2,5/...-ST-5,08 with MSTBW 2,5/...-G-5,08

Type: MSTB 2,5/...-ST-5,08 with MSTBVA 2,5/...-G-5,08

87454_1000_en

Type: MSTB 2,5/...-ST-5,08 with MSTBV 2,5/...-G-5,08

87683_1000_en


1757035 MSTB 2,5/ 4-ST-5,08**13 Environmental and durability tests****13.1 Vibration test**

| | |
|------------------------|------------------------|
| Specification | IEC 60068-2-6:2007-12 |
| Result | Test passed |
| Frequency | 10 - 150 - 10 Hz |
| Sweep speed | 1 octave/min |
| Amplitude | 0.35 mm (10 - 60.1 Hz) |
| Acceleration | 5 g (60.1 - 150 Hz) |
| Test duration per axis | 2.5 h |
| Test directions | X-, Y- and Z-axis |


14 Classification for connectors

| | |
|-----------------------------------|--|
| Specification | IEC 61984:2008-10 |
| Main features | Connectors without switching capacity (COC) |
| Construction form | Fixed connectors |
| Strain relief elements | without strain relief |
| Connection method | Can be reconnected |
| Protection against electric shock | Not encapsulated - touch-proof when inserted |
| Protective conductor | without PE |
| Lock | no |
| Connection method | Screw terminal points |

15 Approvals

| CSA  | | | | |
|---|-------|-------|--|--|
| Use group | B | D | | |
| mm ² /AWG/kcmil | 28-12 | 28-12 | | |
| Voltage | 300 V | 300 V | | |
| Current | 10 A | 10 A | | |

| VDE Gutachten mit Fertigungsüberwachung  | | | | |
|---|---------|--|--|--|
| mm ² /AWG/kcmil | 0.2-2.5 | | | |
| Voltage | 250 V | | | |
| Current | 12 A | | | |

| IECEE CB Scheme  | | | | |
|---|---------|--|--|--|
| mm ² /AWG/kcmil | 0.2-2.5 | | | |
| Voltage | 250 V | | | |
| Current | 12 A | | | |

| cULus Recognized  | | | | |
|--|-------|-------|--|--|
| Use group | B | D | | |
| mm ² /AWG/kcmil | 30-12 | 30-12 | | |
| Voltage | 300 V | 150 V | | |
| Current | 15 A | 15 A | | |

2017-09-29

Product version 04

Document revision 0

1757035 MSTB 2,5/ 4-ST-5,08

EAC 

© PHOENIX CONTACT 2017

1757035 MSTB 2,5/ 4-ST-5,08**16 Commercial Data**

| | |
|--------------------|--|
| Order No. | 1757035 |
| Type | MSTB 2,5/ 4-ST-5,08 |
| Pieces per package | 100 |
| Net weight | 6.616 g |
| GTIN | 4017918029562 |
| | Information that applies locally, see link on page 1 |
| Country of origin | Information that applies locally, see link on page 1 |

17 corresponding headers

| Order No. | Type |
|-----------|------------------------------|
| 1735866 | MSTBW 2,5/ 4-G-5,08 |
| 1736713 | MDSTB 2,5/ 4-G1-5,08 |
| 1736755 | MDSTBV 2,5/ 4-G1-5,08 |
| 1755752 | MSTBVA 2,5/ 4-G-5,08 |
| 1757268 | MSTBA 2,5/ 4-G-5,08 |
| 1758034 | MSTBV 2,5/ 4-G-5,08 |
| 1759033 | MSTB 2,5/ 4-G-5,08 |
| 1767397 | SMSTBA 2,5/ 4-G-5,08 |
| 1769489 | SMSTB 2,5/ 4-G-5,08 |
| 1770960 | MSTBA 2,5/ 4-G-5,08-LA |
| 1842089 | MDSTBA 2,5/ 4-G-5,08 |
| 1842238 | MDSTBW 2,5/ 4-G-5,08 |
| 1842539 | MDSTB 2,5/ 4-G-5,08 |
| 1845358 | MDSTBVA 2,5/ 4-G-5,08 |
| 1845507 | MDSTBV 2,5/ 4-G-5,08 |
| 1847123 | MSTBO 2,5/ 4-GR-5,08 |
| 1850453 | MSTBO 2,5/ 4-GL-5,08 |
| 1859535 | EMSTBVA 2,5/ 4-G-5,08 |
| 1880326 | EMSTBA 2,5/ 4-G-5,08 |
| 1898855 | DFK-MSTBA 2,5/ 4-G-5,08 |
| 1899155 | DFK-MSTBVA 2,5/ 4-G-5,08 |
| 1902767 | MSTBA 2,5/ 4-G-5,08 THT |
| 1902835 | MSTBVA 2,5/ 4-G-5,08 THT |
| 1937253 | MSTBA 2,5/ 4-G-5,08 THT-R32 |
| 1940431 | MSTBVA 2,5/ 4-G-5,08 THT-R56 |
| 1954401 | CC 2,5/ 4-G-5,08 P26THR |
| 1954605 | CC 2,5/ 4-G-5,08 P26THRR32 |
| 1954935 | CCA 2,5/ 4-G-5,08 P26THR |
| 1955057 | CCA 2,5/ 4-G-5,08 P26THRR56 |
| 1955400 | CCV 2,5/ 4-G-5,08 P26THR |
| 1955549 | CCV 2,5/ 4-G-5,08 P26THRR32 |
| 1955879 | CCVA 2,5/ 4-G-5,08 P26THR |
| 1955989 | CCVA 2,5/ 4-G-5,08 P26THRR56 |

18 Accessories

2017-09-29

Product version 04



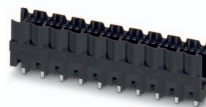

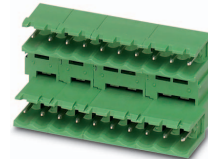
Document revision 0

1757035 MSTB 2,5/ 4-ST-5,08

| Description | Order No. | Type |
|--|-----------|--------------------------|
| Actuation tool, for ST terminal blocks, insulated, also suitable for use as a bladed screwdriver, size: 0.6 x 3.5 x 100 mm, 2-component grip, with non-slip grip | 1205053 | SZS 0,6X3,5 |
| | 0804293 | SK 5,08/3,8:FORTL.ZAHLEN |
| | 1803882 | KGG-MSTB 2,5/ 4 |
| Coding profile, is inserted into the slot on the plug or inverted header, red insulating material | 1734634 | CP-MSTB |
| | 0803883 | SK U/2,8 WH:UNBEDRUCKT |
| | 0805108 | SK 5,08/2,8:SO |
| Marker pen, for manual labeling of unprinted Zack strips, smear-proof and waterproof, line thickness 0.5 mm | 1051993 | B-STIFT |

1757035 MSTB 2,5/ 4-ST-5,08

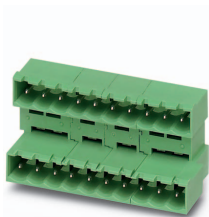
19 Combination tests

| |  |  |  |  |  |
|--|---|---|---|--|---|
| | MSTB 2,5/..-ST | CC 2,5/..-G | CCV 2,5/..-G | CCVA 2,5/..-G | MDSTB 2,5/..-G |
| Specification | | IEC 61984 | IEC 61984 | IEC 61984 | IEC 61984 |
| Mechanical tests (A) | | | | | |
| Insertion/withdrawal force per position | | approx. 8 N / 6 N | approx. 8 N / 6 N | approx. 8 N / 6 N | approx. 8 N / 6 N |
| Polarization when inserted Requirement >20 N | | Test passed | Test passed | Test passed | Test passed |
| Contact holder in insert Requirements >20 N | | Test passed | Test passed | Test passed | Test passed |
| Durability tests (B) | | | | | |
| Contact resistance R ₁ | | 1.3 mΩ | 1.2 mΩ | 1.3 mΩ | 1.6 mΩ |
| Insertion/withdrawal cycles | | 25 | 25 | 25 | 25 |
| Contact resistance R ₂ | | 1.4 mΩ | 1.2 mΩ | 1.4 mΩ | 1.6 mΩ |
| Rated impulse voltage at sea level Voltage waveform ≥ (1.2/50 μs) | | 4.8 kV | 4.8 kV | 4.8 kV | 4.8 kV |
| Power-frequency withstand voltage Voltage waveform ≥ (50/60 Hz) | | 2.21 kV | 2.21 kV | 2.21 kV | 2.21 kV |
| Insulation resistance Requirements > 5 MΩ | | > 2 TΩ | > 0.1 TΩ | > 7.0 TΩ | > 0.1 TΩ |
| Thermal tests (C) | | | | | |
| Tested number of positions | | 12 | 12 | 24 | 12 |
| Tested conductor cross section | | 2.5 mm ² | 2.5 mm ² | 2.5 mm ² | 2.5 mm ² |
| Test current | | 12 A | 12 A | 12 A DC | 10 A |
| Upper limiting temperature Requirements < 100°C | | Test passed | Test passed | Test passed | Test passed |
| Climatic tests (D) | | | | | |
| Test sequence 1: low temperature storage | | -40 °C/2 h | -40 °C/2 h | -40 °C/2 h | -40 °C/2 h |
| Test sequence 2: heat storage | | 100 °C/168 h | 100 °C/168 h | 100 °C/168 h | 100 °C/168 h |
| Test sequence 3: noxious gas storage (ISO 6988) | | 0.2 dm ³ SO ₂ on 300 dm ³ / 40 °C/1 cycle | 0.2 dm ³ SO ₂ on 300 dm ³ / 40 °C/1 cycle | 0.2 dm ³ SO ₂ on 300 dm ³ / 40 °C/1 cycle | 0.2 dm ³ SO ₂ on 300 dm ³ / 40 °C/1 cycle |
| Rated impulse voltage at sea level Voltage waveform ≥ (1.2/50 μs) | | 4.8 kV | 4.8 kV | 4.8 kV | 4.8 kV |
| Power-frequency withstand voltage Voltage waveform ≥ (50/60 Hz) | | 2.21 kV | 2.21 kV | 2.21 kV | 2.21 kV |
| Environmental and endurance tests (E) | | | | | |
| Specification | | IEC 61984:2008-10 | IEC 61984:2008-10 | IEC 61984:2008-10 | IEC 61984:2008-10 |
| Degree of protection | | Finger safety with IP20 test finger | Finger safety with IP20 test finger | Finger safety with IP20 test finger | Finger safety with IP20 test finger |

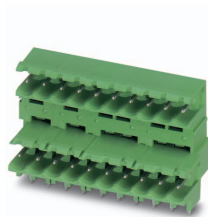
1757035 MSTB 2,5/ 4-ST-5,08



MSTB 2,5/..-ST



MDSTBA 2,5/..-G



MDSTBW 2,5/..-G



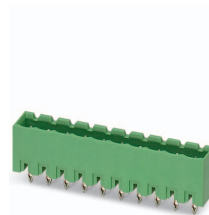
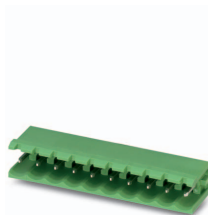
MDSTBV 2,5/..-G



DFK-MSTBA 2,5/..-G

| Specification | IEC 61984 | IEC 61984 | IEC 61984 | IEC 61984 |
|--|---|---|---|-----------|
| Mechanical tests (A) | | | | |
| Insertion/withdrawal force per position | approx. 8 N / 6 N | approx. 8 N / 6 N | approx. 8 N / 6 N | |
| Polarization when inserted Requirement >20 N | Test passed | Test passed | Test passed | |
| Contact holder in insert Requirements >20 N | Test passed | Test passed | Test passed | |
| Durability tests (B) | | | | |
| Contact resistance R ₁ | 1.6 mΩ | 1.6 mΩ | 2.6 mΩ | |
| Insertion/withdrawal cycles | 25 | 25 | 25 | |
| Contact resistance R ₂ | 1.6 mΩ | 1.7 mΩ | 2.6 mΩ | |
| Rated impulse voltage at sea level Voltage waveform ≥ (1.2/50 μs) | 4.8 kV | 4.8 kV | 4.8 kV | |
| Power-frequency withstand voltage Voltage waveform ≥ (50/60 Hz) | 2.21 kV | 2.21 kV | 2.21 kV | |
| Insulation resistance Requirements > 5 MΩ | > 50 GΩ | > 0.3 TΩ | > 50 GΩ | |
| Thermal tests (C) | | | | |
| Tested number of positions | 12 | 12 | 12 | |
| Tested conductor cross section | 2.5 mm ² | 2.5 mm ² | 2.5 mm ² | |
| Test current | 10 A | 10 A | 10 A | |
| Upper limiting temperature Requirements < 100°C | Test passed | Test passed | Test passed | |
| Climatic tests (D) | | | | |
| Test sequence 1: low temperature storage | -40 °C/2 h | -40 °C/2 h | -40 °C/2 h | |
| Test sequence 2: heat storage | 100 °C/168 h | 100 °C/168 h | 100 °C/168 h | |
| Test sequence 3: noxious gas storage (ISO 6988) | 0.2 dm ³ SO ₂ on 300 dm ³ / 40 °C/1 cycle | 0.2 dm ³ SO ₂ on 300 dm ³ / 40 °C/1 cycle | 0.2 dm ³ SO ₂ on 300 dm ³ / 40 °C/1 cycle | |
| Rated impulse voltage at sea level Voltage waveform ≥ (1.2/50 μs) | 4.8 kV | 4.8 kV | 4.8 kV | |
| Power-frequency withstand voltage Voltage waveform ≥ (50/60 Hz) | 2.21 kV | 2.21 kV | 2.21 kV | |
| Environmental and endurance tests (E) | | | | |
| Specification | IEC 61984:2008-10 | IEC 61984:2008-10 | IEC 61984:2008-10 | |
| Degree of protection | Finger safety with IP20 test finger | Finger safety with IP20 test finger | Finger safety with IP20 test finger | |

1757035 MSTB 2,5/ 4-ST-5,08



MSTB 2,5/...-ST

MVSTBU 2,5/...-GB

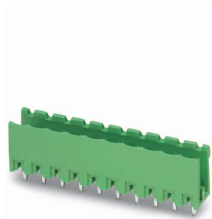
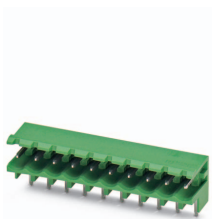
MSTB 2,5/...-G

MDSTBVA 2,5/...-G

EMSTBVA 2,5/...-G

| Specification | IEC 61984 | IEC 61984 | IEC 61984 | DIN VDE 0627 (in parts) |
|--|---|---|---|---|
| Mechanical tests (A) | | | | |
| Insertion/withdrawal force per position | approx. 8 N / 6 N | approx. 8 N / 6 N | approx. 8 N / 6 N | approx. 5 N / 4 N |
| Polarization when inserted Requirement >20 N | Test passed | Test passed | Test passed | |
| Contact holder in insert Requirements >20 N | Test passed | Test passed | Test passed | |
| Durability tests (B) | | | | |
| Contact resistance R ₁ | 1.9 mΩ | 1.4 mΩ | 2.5 mΩ | 1.1 mΩ |
| Insertion/withdrawal cycles | 25 | 25 | 25 | 100 |
| Contact resistance R ₂ | 2.2 mΩ | 1.4 mΩ | 2.5 mΩ | 1.5 mΩ |
| Rated impulse voltage at sea level Voltage waveform ≥ (1.2/50 μs) | 4.8 kV | 4.8 kV | 4.8 kV | 4.8 kV |
| Power-frequency withstand voltage Voltage waveform ≥ (50/60 Hz) | 2.21 kV | 2.21 kV | 2.21 kV | 2.21 kV |
| Insulation resistance Requirements > 5 MΩ | > 0.7 TΩ | > 0.3 TΩ | > 0.2 TΩ | > 8 TΩ |
| Thermal tests (C) | | | | |
| Tested number of positions | 20 | 24 | 16 | 6 |
| Tested conductor cross section | 2.5 mm ² | 2.5 mm ² | 2.5 mm ² | 2.5 mm ² |
| Test current | 12 A | 12 A | 10 A | 12 A |
| Upper limiting temperature Requirements < 100°C | Test passed | Test passed | Test passed | |
| Climatic tests (D) | | | | |
| Test sequence 1: low temperature storage | -40 °C/2 h | -40 °C/2 h | -40 °C/2 h | -40 °C/2 h |
| Test sequence 2: heat storage | 100 °C/168 h | 100 °C/168 h | 100 °C/168 h | 100 °C/168 h |
| Test sequence 3: noxious gas storage (ISO 6988) | 0.2 dm ³ SO ₂ on 300 dm ³ / 40 °C/1 cycle | 0.2 dm ³ SO ₂ on 300 dm ³ / 40 °C/1 cycle | 0.2 dm ³ SO ₂ on 300 dm ³ / 40 °C/1 cycle | 0.2 dm ³ SO ₂ on 300 dm ³ / 40 °C/1 cycle |
| Rated impulse voltage at sea level Voltage waveform ≥ (1.2/50 μs) | 4.8 kV | 4.8 kV | 4.8 kV | 4.8 kV |
| Power-frequency withstand voltage Voltage waveform ≥ (50/60 Hz) | 2.21 kV | 2.21 kV | 2.21 kV | 2.21 kV |
| Environmental and endurance tests (E) | | | | |
| Specification | IEC 61984:2008-10 | IEC 61984:2008-10 | IEC 61984:2008-10 | IEC 61984:2008-10 |
| Degree of protection | Finger safety with IP20 test finger | Finger safety with IP20 test finger | Finger safety with IP20 test finger | Finger safety with IP20 test finger |

1757035 MSTB 2,5/ 4-ST-5,08



MSTB 2,5/..-ST

MSTBW 2,5/..-G

MSTBVA 2,5/..-G

MSTBV 2,5/..-G

| Specification | IEC 61984 | IEC 61984 | IEC 61984 |
|--|---|---|---|
| Mechanical tests (A) | | | |
| Insertion/withdrawal force per position | approx. 8 N / 6 N | approx. 8 N / 6 N | approx. 8 N / 6 N |
| Polarization when inserted Requirement >20 N | Test passed | Test passed | Test passed |
| Contact holder in insert Requirements >20 N | Test passed | Test passed | Test passed |
| Durability tests (B) | | | |
| Contact resistance R ₁ | 1.3 mΩ | 2.4 mΩ | 2.4 mΩ |
| Insertion/withdrawal cycles | 25 | 25 | 25 |
| Contact resistance R ₂ | 1.3 mΩ | 2.5 mΩ | 2.4 mΩ |
| Rated impulse voltage at sea level Voltage waveform ≥ (1.2/50 μs) | 4.8 kV | 4.8 kV | 4.8 kV |
| Power-frequency withstand voltage Voltage waveform ≥ (50/60 Hz) | 2.21 kV | 2.21 kV | 2.21 kV |
| Insulation resistance Requirements > 5 MΩ | > 0.2 TΩ | > 0.2 TΩ | > 0.2 TΩ |
| Thermal tests (C) | | | |
| Tested number of positions | 20 | 24 | 20 |
| Tested conductor cross section | 2.5 mm ² | 2.5 mm ² | 2.5 mm ² |
| Test current | | | 12 A |
| Upper limiting temperature Requirements < 100°C | Test passed | Test passed | Test passed |
| Climatic tests (D) | | | |
| Test sequence 1: low temperature storage | -40 °C/2 h | -40 °C/2 h | -40 °C/2 h |
| Test sequence 2: heat storage | 100 °C/168 h | 100 °C/168 h | 100 °C/168 h |
| Test sequence 3: noxious gas storage (ISO 6988) | 0.2 dm ³ SO ₂ on 300 dm ³ / 40 °C/1 cycle | 0.2 dm ³ SO ₂ on 300 dm ³ / 40 °C/1 cycle | 0.2 dm ³ SO ₂ on 300 dm ³ / 40 °C/1 cycle |
| Rated impulse voltage at sea level Voltage waveform ≥ (1.2/50 μs) | 4.8 kV | 4.8 kV | 4.8 kV |
| Power-frequency withstand voltage Voltage waveform ≥ (50/60 Hz) | 2.21 kV | 2.21 kV | 2.21 kV |
| Environmental and endurance tests (E) | | | |
| Specification | IEC 61984:2008-10 | IEC 61984:2008-10 | IEC 61984:2008-10 |
| Degree of protection | Finger safety with IP20 test finger | Finger safety with IP20 test finger | Finger safety with IP20 test finger |



SCATTERGOOD & JOHNSON LTD

ELECTRICAL ENGINEERING & FLUID CONTROL DISTRIBUTORS

Est.1899

At Scattergood & Johnson Ltd, we pride ourselves on being a technical distributor to specialist industries.

Working with a range of quality product suppliers across a number of specialist markets, we are not your average 'box shifter' - we are your technical and supply chain partner.

We fully support every product we sell - for free! Our internal team and external sales engineers can answer any product or application question, no matter the complexity.

Backing up this technical ability is a range of 50,000+ products available from stock for nationwide next day delivery (same day if required!), or you can collect what you need from any of our trade counters around the UK.

Select your specialist interest below to learn more about how we can help.



Online, In Branch and On the Road - Scattergood & Johnson Ltd, there when you need us.

www.scatts.co.uk