

# Data sheet

Order No.: 1792100

Type: MVSTBR 2,5/11-ST

Plug component, Screw connection with tension sleeve



The figure shows a 10-position version of the product

## 1 Main features



• No. of pos.	11	• Nominal current	12 A
• Conductor cross section	2.5 mm <sup>2</sup>	• Nominal voltage	320 V
• Color	green	• Connection direction	90 °
• Pitch	5 mm	• Type of packaging	packed in cardboard
• Connection method	Screw connection with tension sleeve		

## 2 Your advantages

- ✓ Well-known connection principle allows worldwide use
- ✓ Low temperature rise, thanks to maximum contact force
- ✓ Allows connection of two conductors



Make sure you always use the latest documentation.

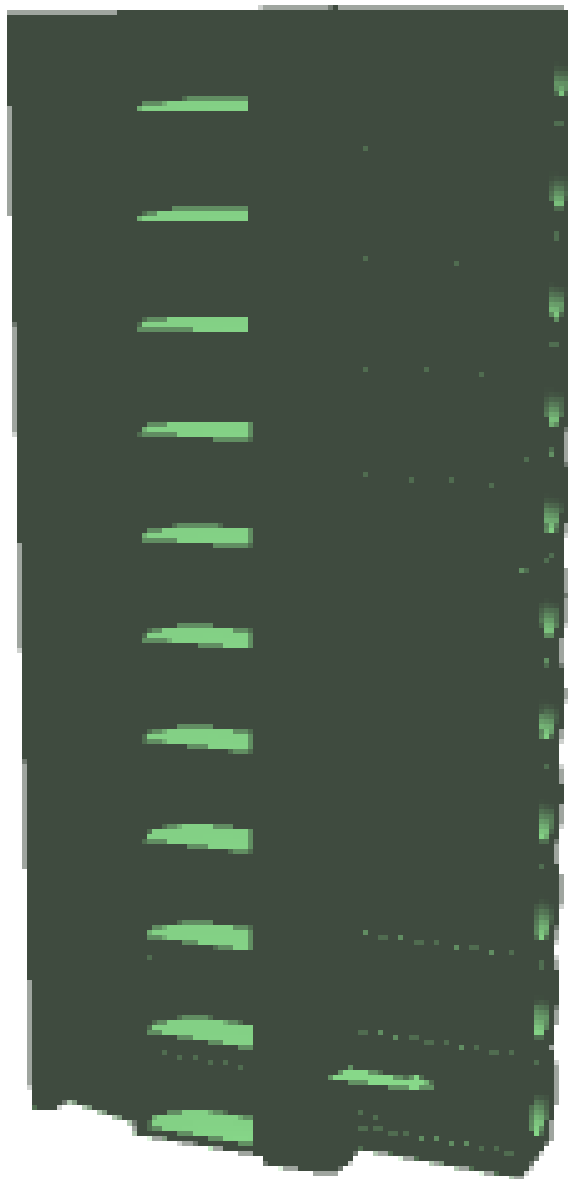
It can be downloaded at: [phoenixcontact.net/product/1792100](http://phoenixcontact.net/product/1792100)

**1792100 MVSTBR 2,5/11-ST****3 Table of contents**

1	Main features.....	1
2	Your advantages .....	1
3	Table of contents .....	2
4	3D model in PDF can be activated (Acrobat Reader only).....	3
5	item properties.....	4
	5.1 Connection capacity .....	4
	5.2 Material data .....	4
6	Dimensions.....	4
	6.1 Dimensions for the product .....	5
7	Series drawing.....	6
8	Packaging information .....	7
9	Application.....	7
	9.1 Temperature limit values .....	7
10	Mechanical tests.....	8
	10.1 Termination and connection method.....	8
	10.2 Pull-out test .....	8
11	Electrical tests .....	9
	11.1 Electrical data .....	9
	11.2 Air and creepage distances .....	9
12	Current carrying capacity/derating curves .....	10
13	Environmental and durability tests .....	12
	13.1 Vibration test .....	12
14	Classification for connectors.....	12
15	Approvals .....	12
16	Commercial Data.....	14
17	corresponding headers.....	14
18	Accessories.....	14
19	Combination tests.....	15

1792100 MVSTBR 2,5/11-ST

**4 3D model in PDF can be activated (Acrobat Reader only)**



**1792100 MVSTBR 2,5/11-ST****5 item properties**

Order No.	1792100
Type	MVSTBR 2,5/11-ST
Type of contact	Female connector
Range of articles	MVSTBR 2,5/..-ST
Pitch	5 mm
Number of positions	11
Connection method	Screw connection with tension sleeve
Drive form screw head	Slotted (L)
Screw thread	M3
Tightening torque	0.5 Nm ... 0.6 Nm
Locking	without

**5.1 Connection capacity**

Conductor cross section, solid	0.2 mm <sup>2</sup> to 2.5 mm <sup>2</sup>
Conductor cross section, flexible	0.2 mm <sup>2</sup> to 2.5 mm <sup>2</sup>
Conductor cross section AWG/kcmil	24 to 12
2 conductors with same cross section, solid	0.2 mm <sup>2</sup> to 1 mm <sup>2</sup>
2 conductors with same cross section, stranded	0.2 mm <sup>2</sup> to 1.5 mm <sup>2</sup>
Conductor cross section flexible, with ferrule without plastic sleeve	0.25 mm <sup>2</sup> to 2.5 mm <sup>2</sup>
Conductor cross section flexible, with ferrule with plastic sleeve	0.25 mm <sup>2</sup> to 2.5 mm <sup>2</sup>
2 conductors with same cross section, stranded, with ferrule without plastic sleeve	0.25 mm <sup>2</sup> to 1 mm <sup>2</sup>
2 conductors with same cross section, stranded, with TWIN ferrules with plastic sleeve	0.5 mm <sup>2</sup> to 1.5 mm <sup>2</sup>
Cylindrical gauge a x b / diameter	2.8 mm x 2.0 mm / 2.4 mm
Stripping length	7 mm

**5.2 Material data**

<b>Material of metal parts</b>		
Note	WEEE/RoHS-compliant, whisker-free acc. to IEC 60068-2-82/JEDEC JESD 201	
Contact material	Cu alloy	
Terminal point surface	Sn 4 µm ... 8 µm	
Surface contact area	Sn 4 µm ... 8 µm	
Surface characteristics	Tin-plated	
<b>Insulating material data</b>		
Insulating material	Housing	Housing
CTI according to IEC 60112	PA	
Flammability rating according to UL 94	600	
Flammability rating according to UL 94	V0	
Color	green (6021)	
Glow wire flammability index GWFI according to EN 60695-2-12	850	
Glow wire ignition temperature GWIT according to EN 60695-2-13	775	
Temperature for the ball pressure test according to EN 60695-10-2	125 °C	

**6 Dimensions**

**1792100 MVSTBR 2,5/11-ST**

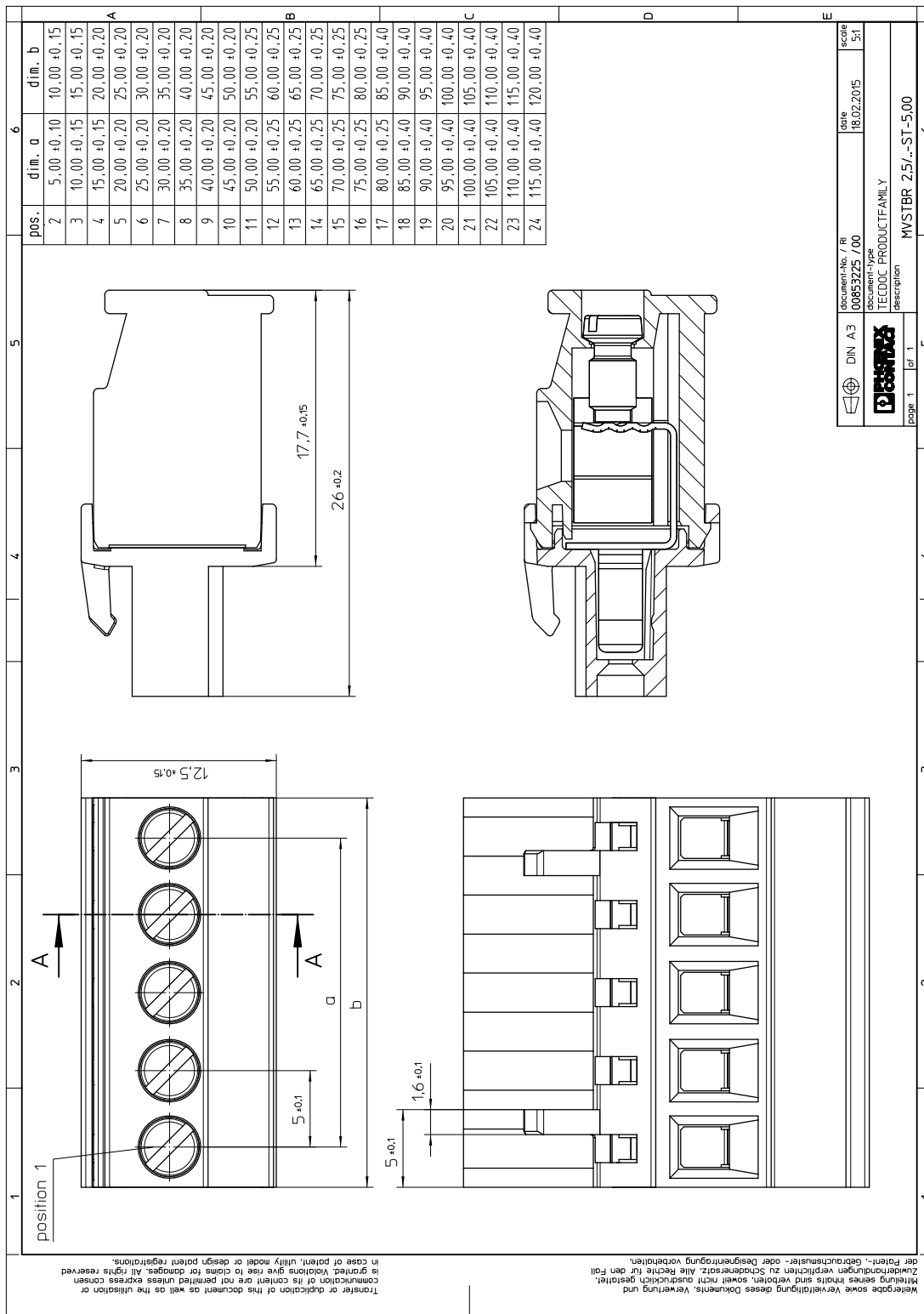
---

**6.1 Dimensions for the product**

Length	12.6 mm
Width	55 mm
Total height	26 mm
Dimension a	50 mm

1792100 MVSTBR 2,5/11-ST

7 Series drawing



DIN A3	document-No. / Ri	date	scale
00653225 700	18.02.2015	1:5:1	
TECDOC PRODUCTFAMILY			
MVSTBR 2,5/-ST-5,00			

**1792100 MVSTBR 2,5/11-ST****8 Packaging information**

Type of packaging	packed in cardboard
Pieces per package	50

**9 Application****9.1 Temperature limit values**

Ambient temperature (storage/transport)	-40 °C ... 70 °C
Ambient temperature (assembly)	-5 °C ... 100 °C
Ambient temperature (operation)	-40 °C (dependent on the derating curve)

**1792100 MVSTBR 2,5/11-ST****10 Mechanical tests**

Mechanical test group A	
Specification	IEC 61984:2008-10
Visual test	Test passed
Specification	IEC 60512-1-1:2002-02
Dimensional test	Test passed
Specification	IEC 60512-1-2:2002-02
Resistance of marking	Test passed
Specification	IEC 60068-2-70:1995-12
Insertion and withdrawal force	Test passed
Specification	IEC 60512-13-2:2006-02
No. of cycles	25
Insertion strength per pos. approx.	8 N
Withdraw strength per pos. approx.	6 N
Polarization and coding	Test passed
Specification	IEC 60512-13-5:2006-02
Test force	20 N
Contact retention in insert	Test passed
Specification	IEC 60512-15-1:2008-05
Test force per pos.	36 N

**10.1 Termination and connection method**

Specification	IEC 60999-1:1999-11
Check for damage to conductor or loosening	Test passed

**10.2 Pull-out test**

Termination and connection method: pull-out test	
Specification	IEC 60999-1:1999-11
Result	Test passed
Conductor cross section/conductor type/tractive force actual value	0.2 mm <sup>2</sup> / solid / > 10 N
Conductor cross section/conductor type/tractive force actual value	0.2 mm <sup>2</sup> / stranded / > 10 N
Conductor cross section/conductor type/tractive force actual value	2.5 mm <sup>2</sup> / solid / > 50 N
Conductor cross section/conductor type/tractive force actual value	2.5 mm <sup>2</sup> / stranded / > 50 N

**1792100 MVSTBR 2,5/11-ST****11 Electrical tests****11.1 Electrical data**

Rated current / conductor cross section	12 A / 2.5 mm <sup>2</sup>
Rated insulation voltage (III/2)	320 V
Rated surge voltage (III/2)	4 kV
Contact resistance	2.8 mΩ
Degree of pollution	2

**11.2 Air and creepage distances**

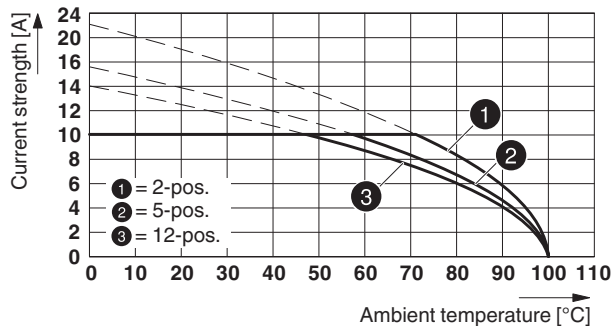
Component	Plug component		
Specification	IEC 60664-1:2007-04		
Mains type	unearthed mains		
Insulating material group	I		
Comparative tracking index (IEC 60112:2003-01)	CTI 600		
Rated insulation voltage	250 V	320 V	630 V
Rated surge voltage	4 kV	4 kV	4 kV
Degree of pollution	3	2	2
Overvoltage category	III	III	II
Minimum clearance case A (inhomogeneous field)	3 mm	3 mm	3 mm
Minimum value of the creepage path requirement in acc. with table	4 mm	3 mm	3.2 mm

1792100 MVSTBR 2,5/11-ST

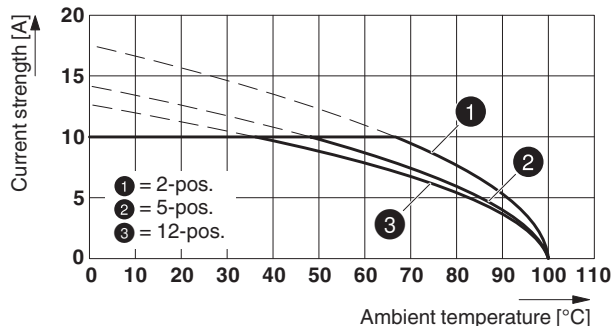
12 Current carrying capacity/derating curves

Specification	IEC 61984:2008-10
Note	Representation based on IEC 60512-5-2:2002-02
Reduction factor	0.8
Number of positions	See diagram
Conductor cross section	2.5 mm <sup>2</sup>

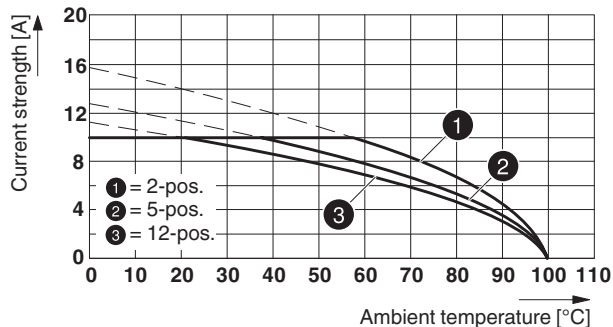
Type: MVSTB(R/W) 2,5/...-ST with MDSTB 2,5/...-G

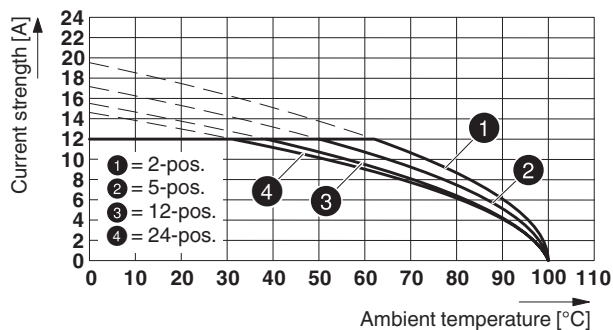


Type: MVSTB(R/W) 2,5/...-ST with MDSTBW 2,5/...-G



Type: MVSTB(R/W) 2,5/...-ST with MDSTBV 2,5/...-G



**1792100 MVSTBR 2,5/11-ST****Type: MVSTB(R/W) 2,5/...-ST with MSTB 2,5/...-G****Type: MVSTB(R/W) 2,5/...-ST with MSTBO 2,5/...-G1R**

86429\_2000\_en

**Type: MVSTB(R/W) 2,5/...-ST with MSTBO 2,5/...-G1L**

86461\_2000\_en

**Type: MVSTB(R/W) 2,5/...-ST with MSTBW 2,5/...-G**

86525\_2000\_en

**Type: MVSTB(R/W) 2,5/...-ST with SMSTB 2,5/...-G**

87104\_1000\_en

**Type: MVSTB(R/W) 2,5/...-ST with SMSTBA 2,5/...-G**

87308\_1000\_en

**Type: MVSTB(R/W) 2,5/...-ST with MSTBV 2,5 2,5/...-G**

87309\_1000\_en

**Type: MVSTB(R/W) 2,5/...-ST with MDSTB 2,5/...-G1**

87449\_1000\_en


**1792100 MVSTBR 2,5/11-ST****13 Environmental and durability tests****13.1 Vibration test**


Specification	IEC 60068-2-6:2007-12
Result	Test passed
Frequency	10 - 150 - 10 Hz
Sweep speed	1 octave/min
Amplitude	0.35 mm (10 - 60.1 Hz)
Acceleration	5 g (60.1 - 150 Hz)
Test duration per axis	2.5 h
Test directions	X-, Y- and Z-axis


**14 Classification for connectors**


Specification	IEC 61984:2008-10
Main features	Connectors without switching capacity (COC)
Construction form	Fixed connectors
Strain relief elements	without strain relief
Connection method	Can be reconnected
Protection against electric shock	Not encapsulated - touch-proof when inserted
Protective conductor	without PE
Lock	no
Connection method	Screw terminal points

**15 Approvals**

CSA 				
Use group	B	D		
mm <sup>2</sup> /AWG/kcmil	28-12	28-12		
Voltage	300 V	300 V		
Current	10 A	10 A		

VDE Gutachten mit Fertigungsüberwachung 				
mm <sup>2</sup> /AWG/kcmil	0.2-2.5			
Voltage	250 V			
Current	12 A			

IECEE CB Scheme 				
mm <sup>2</sup> /AWG/kcmil	0.2-2.5			
Voltage	250 V			
Current	12 A			

cULus Recognized 				
Use group	B	D		
mm <sup>2</sup> /AWG/kcmil	30-12	30-12		
Voltage	300 V	300 V		
Current	15 A	10 A		

2017-11-15

Product version 02

Document revision 0

**1792100 MVSTBR 2,5/11-ST**

EAC ENEC

**1792100 MVSTBR 2,5/11-ST****16 Commercial Data**

Order No.	1792100
Type	MVSTBR 2,5/11-ST
Pieces per package	50
Net weight	23.013 g
GTIN	4017918044589
	Information that applies locally, see link on page 1
Country of origin	Information that applies locally, see link on page 1

**17 corresponding headers**

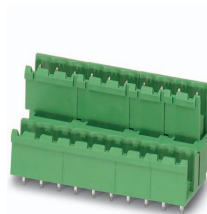
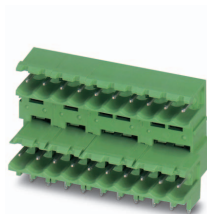
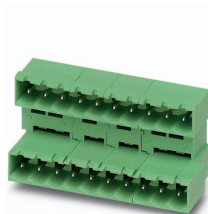
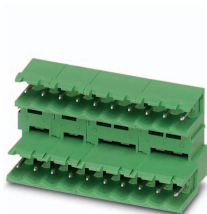
Order No.	Type
1736027	MSTBW 2,5/11-G
1753615	MSTBV 2,5/11-G
1754614	MSTB 2,5/11-G
1755590	MSTBVA 2,5/11-G
1757556	MSTBA 2,5/11-G
1762787	MDSTB 2,5/11-G1
1762936	MDSTBV 2,5/11-G1
1768273	MSTB 2,5/11-G-LA
1769324	SMSTB 2,5/11-G
1769890	SMSTBA 2,5/11-G
1770575	MSTBA 2,5/11-G-LA
1845879	MDSTBVA 2,5/11-G
1846027	MDSTBV 2,5/11-G
1846454	MDSTB 2,5/11-G
1846603	MDSTBA 2,5/11-G
1846904	MDSTBW 2,5/11-G
1899935	EMSTBA 2,5/11-G
1914946	EMSTBVA 2,5/11-G

**18 Accessories**

Description	Order No.	Type
Actuation tool, for ST terminal blocks, insulated, also suitable for use as a bladed screwdriver, size: 0.6 x 3.5 x 100 mm, 2-component grip, with non-slip grip	1205053	SZS 0,6X3,5
Marker pen, for manual labeling of unprinted Zack strips, smear-proof and waterproof, line thickness 0.5 mm	1051993	B-STIFT
	0805072	SK 5/3,8:SO
	0805409	SK 5/3,8:UNBEDRUCKT
Coding profile, is inserted into the slot on the plug or inverted header, red insulating material	1734634	CP-MSTB

1792100 MVSTBR 2,5/11-ST

19 Combination tests



**MVSTBR 2,5/11-ST**

**MDSTB 2,5/11-G**

**MDSTBA 2,5/11-G**

**MDSTBW 2,5/11-G**

**MDSTBV 2,5/11-G**

Specification	IEC 61984	IEC 61984	IEC 61984	IEC 61984
<b>Mechanical tests (A)</b>				
Insertion/withdrawal force per position	approx. 8 N / 6 N		approx. 8 N / 6 N	approx. 8 N / 6 N
Polarization when inserted Requirement >20 N	Test passed		Test passed	Test passed
Contact holder in insert Requirements >20 N	Test passed		Test passed	Test passed
<b>Durability tests (B)</b>				
Contact resistance R <sub>1</sub>	2.8 mΩ		2.7 mΩ	3.6 mΩ
Insertion/withdrawal cycles	25		25	25
Contact resistance R <sub>2</sub>	2.8 mΩ		2.8 mΩ	3.6 mΩ
Rated impulse voltage at sea level Voltage waveform ≥ (1.2/50 μs)	4.8 kV		4.8 kV	4.8 kV
Power-frequency withstand voltage Voltage waveform ≥ (50/60 Hz)	2.21 kV		2.21 kV	2.21 kV
Insulation resistance Requirements > 5 MΩ	> 0.1 TΩ		> 1 TΩ	> 0.5 TΩ
<b>Thermal tests (C)</b>				
Tested number of positions	12		12	12
Tested conductor cross section	2.5 mm <sup>2</sup>		2.5 mm <sup>2</sup>	2.5 mm <sup>2</sup>
Test current	10 A		10 A	10 A
Upper limiting temperature Requirements < 100°C	Test passed		Test passed	Test passed
<b>Climatic tests (D)</b>				
Test sequence 1: low temperature storage	-40 °C/2 h		-40 °C/2 h	-40 °C/2 h
Test sequence 2: heat storage	100 °C/168 h		100 °C/168 h	100 °C/168 h
Test sequence 3: noxious gas storage (ISO 6988)	0.2 dm <sup>3</sup> SO <sub>2</sub> on 300 dm <sup>3</sup> / 40 °C/1 cycle		0.2 dm <sup>3</sup> SO <sub>2</sub> on 300 dm <sup>3</sup> / 40 °C/1 cycle	0.2 dm <sup>3</sup> SO <sub>2</sub> on 300 dm <sup>3</sup> / 40 °C/1 cycle
Rated impulse voltage at sea level Voltage waveform ≥ (1.2/50 μs)	4.8 kV		4.8 kV	4.8 kV
Power-frequency withstand voltage Voltage waveform ≥ (50/60 Hz)	2.21 kV		2.21 kV	2.21 kV
<b>Environmental and endurance tests (E)</b>				
Specification	IEC 61984:2008-10		IEC 61984:2008-10	IEC 61984:2008-10
Degree of protection	Finger safety with IP20 test finger		Finger safety with IP20 test finger	Finger safety with IP20 test finger

**1792100 MVSTBR 2,5/11-ST**



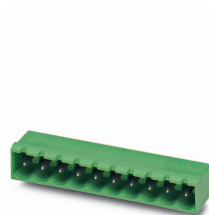
**MVSTBR 2,5/...-ST**



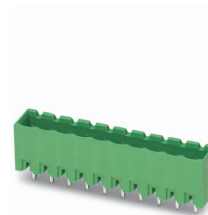
**MDSTBVA 2,5/...-G**



**DFK-MSTB 2,5/...-G**



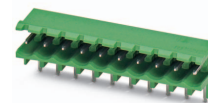
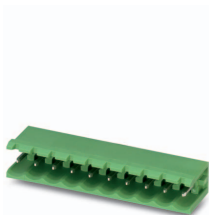
**MSTBA 2,5/...-G**



**MSTBVA 2,5/...-G**

Specification	IEC 61984	IEC 61984	IEC 61984	IEC 61984
<b>Mechanical tests (A)</b>				
Insertion/withdrawal force per position				
Polarization when inserted Requirement >20 N				
Contact holder in insert Requirements >20 N				
<b>Durability tests (B)</b>				
Insertion/withdrawal cycles				
Rated impulse voltage at sea level Voltage waveform $\geq (1.2/50 \mu s)$				
Power-frequency withstand voltage Voltage waveform $\geq (50/60 \text{ Hz})$				
Insulation resistance Requirements > 5 M $\Omega$				
<b>Thermal tests (C)</b>				
Tested number of positions				
Tested conductor cross section				
Test current				
Upper limiting temperature Requirements < 100°C				
<b>Climatic tests (D)</b>				
Test sequence 1: low temperature storage				
Test sequence 2: heat storage				
Test sequence 3: noxious gas storage (ISO 6988)				
Rated impulse voltage at sea level Voltage waveform $\geq (1.2/50 \mu s)$				
Power-frequency withstand voltage Voltage waveform $\geq (50/60 \text{ Hz})$				
<b>Environmental and endurance tests (E)</b>				
Specification				
Degree of protection				

**1792100 MVSTBR 2,5/11-ST**



**MVSTBR 2,5/...-ST**

**MSTB 2,5/...-G**

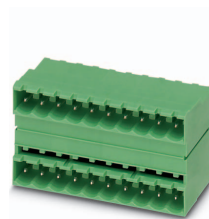
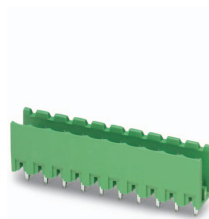
**MSTBO 2,5/...-G1R**

**MSTBO 2,5/...-G1L**

**MSTBW 2,5/...-G**

Specification	IEC 61984	IEC 61984	IEC 61984	IEC 61984
<b>Mechanical tests (A)</b>				
Insertion/withdrawal force per position	approx. 8 N / 6 N	approx. 8 N / 6 N	approx. 8 N / 6 N	approx. 8 N / 6 N
Polarization when inserted Requirement >20 N	Test passed	Test passed	Test passed	Test passed
Contact holder in insert Requirements >20 N	Test passed	Test passed	Test passed	Test passed
<b>Durability tests (B)</b>				
Contact resistance R <sub>1</sub>	2.5 mΩ	2.6 mΩ	2.6 mΩ	2.5 mΩ
Insertion/withdrawal cycles	25	25	25	25
Contact resistance R <sub>2</sub>	2.5 mΩ	2.6 mΩ	2.6 mΩ	2.6 mΩ
Rated impulse voltage at sea level Voltage waveform ≥ (1.2/50 μs)	4.8 kV	4.8 kV	4.8 kV	4.8 kV
Power-frequency withstand voltage Voltage waveform ≥ (50/60 Hz)	2.21 kV	2.21 kV	2.21 kV	2.21 kV
Insulation resistance Requirements > 5 MΩ	> 0.3 TΩ	> 0.3 TΩ	> 0.1 TΩ	> 0.5 TΩ
<b>Thermal tests (C)</b>				
Tested number of positions	24	4	4	21
Tested conductor cross section	2.5 mm <sup>2</sup>	2.5 mm <sup>2</sup>	2.5 mm <sup>2</sup>	2.5 mm <sup>2</sup>
Test current	12 A	12 A	12 A	
Upper limiting temperature Requirements < 100°C	Test passed	Test passed	Test passed	Test passed
<b>Climatic tests (D)</b>				
Test sequence 1: low temperature storage	-40 °C/2 h	-40 °C/2 h	-40 °C/2 h	-40 °C/2 h
Test sequence 2: heat storage	100 °C/168 h	100 °C/168 h	100 °C/168 h	100 °C/168 h
Test sequence 3: noxious gas storage (ISO 6988)	0.2 dm <sup>3</sup> SO <sub>2</sub> on 300 dm <sup>3</sup> / 40 °C/1 cycle	0.2 dm <sup>3</sup> SO <sub>2</sub> on 300 dm <sup>3</sup> / 40 °C/1 cycle	0.2 dm <sup>3</sup> SO <sub>2</sub> on 300 dm <sup>3</sup> / 40 °C/1 cycle	0.2 dm <sup>3</sup> SO <sub>2</sub> on 300 dm <sup>3</sup> / 40 °C/1 cycle
Rated impulse voltage at sea level Voltage waveform ≥ (1.2/50 μs)	4.8 kV	4.8 kV	4.8 kV	4.8 kV
Power-frequency withstand voltage Voltage waveform ≥ (50/60 Hz)	2.21 kV	2.21 kV	2.21 kV	2.21 kV
<b>Environmental and endurance tests (E)</b>				
Specification	IEC 61984:2008-10	IEC 61984:2008-10	IEC 61984:2008-10	IEC 61984:2008-10
Degree of protection	Finger safety with IP20 test finger	Finger safety with IP20 test finger	Finger safety with IP20 test finger	Finger safety with IP20 test finger

**1792100 MVSTBR 2,5/11-ST**



	<b>MVSTBR 2,5/11-ST</b>	<b>SMSTB 2,5/11-G</b>	<b>SMSTBA 2,5/11-G</b>	<b>MSTBV 2,5/11-G</b>	<b>MDSTB 2,5/11-G1</b>
Specification		IEC 61984	IEC 61984	IEC 61984	IEC 61984
<b>Mechanical tests (A)</b>					
Insertion/withdrawal force per position		approx. 8 N / 6 N	approx. 8 N / 6 N	approx. 8 N / 6 N	approx. 8 N / 6 N
Polarization when inserted Requirement >20 N		Test passed	Test passed	Test passed	Test passed
Contact holder in insert Requirements >20 N		Test passed	Test passed	Test passed	Test passed
<b>Durability tests (B)</b>					
Contact resistance R <sub>1</sub>		2.4 mΩ	2.5 mΩ	3.6 mΩ	2.2 mΩ
Insertion/withdrawal cycles		25	25	25	25
Contact resistance R <sub>2</sub>		2.5 mΩ	2.5 mΩ	3.7 mΩ	2.3 mΩ
Rated impulse voltage at sea level Voltage waveform ≥ (1.2/50 μs)		4.8 kV	4.8 kV	4.8 kV	4.8 kV
Power-frequency withstand voltage Voltage waveform ≥ (50/60 Hz)		2.21 kV	2.21 kV	2.21 kV	2.21 kV
Insulation resistance Requirements > 5 MΩ		> 0.2 TΩ	> 0.3 TΩ	> 0.3 TΩ	> 0.2 TΩ
<b>Thermal tests (C)</b>					
Tested number of positions		24	24	24	20
Tested conductor cross section		2.5 mm <sup>2</sup>	2.5 mm <sup>2</sup>	2.5 mm <sup>2</sup>	2.5 mm <sup>2</sup>
Test current					10 A
Upper limiting temperature Requirements < 100°C		Test passed	Test passed	Test passed	Test passed
<b>Climatic tests (D)</b>					
Test sequence 1: low temperature storage		-40 °C/2 h	-40 °C/2 h	-40 °C/2 h	-40 °C/2 h
Test sequence 2: heat storage		100 °C/168 h	100 °C/168 h	100 °C/168 h	100 °C/168 h
Test sequence 3: noxious gas storage (ISO 6988)		0.2 dm <sup>3</sup> SO <sub>2</sub> on 300 dm <sup>3</sup> / 40 °C/1 cycle	0.2 dm <sup>3</sup> SO <sub>2</sub> on 300 dm <sup>3</sup> / 40 °C/1 cycle	0.2 dm <sup>3</sup> SO <sub>2</sub> on 300 dm <sup>3</sup> / 40 °C/1 cycle	0.2 dm <sup>3</sup> SO <sub>2</sub> on 300 dm <sup>3</sup> / 40 °C/1 cycle
Rated impulse voltage at sea level Voltage waveform ≥ (1.2/50 μs)		4.8 kV	4.8 kV	4.8 kV	4.8 kV
Power-frequency withstand voltage Voltage waveform ≥ (50/60 Hz)		2.21 kV	2.21 kV	2.21 kV	2.21 kV
<b>Environmental and endurance tests (E)</b>					
Specification		IEC 61984:2008-10	IEC 61984:2008-10	IEC 61984:2008-10	IEC 61984:2008-10
Degree of protection		Finger safety with IP20 test finger	Finger safety with IP20 test finger	Finger safety with IP20 test finger	Finger safety with IP20 test finger



# SCATTERGOOD & JOHNSON LTD

ELECTRICAL ENGINEERING & FLUID CONTROL DISTRIBUTORS

Est.1899

At Scattergood & Johnson Ltd, we pride ourselves on being a technical distributor to specialist industries.

Working with a range of quality product suppliers across a number of specialist markets, we are not your average 'box shifter' - we are your technical and supply chain partner.

We fully support every product we sell - for free! Our internal team and external sales engineers can answer any product or application question, no matter the complexity.

Backing up this technical ability is a range of 50,000+ products available from stock for nationwide next day delivery (same day if required!), or you can collect what you need from any of our trade counters around the UK.

Select your specialist interest below to learn more about how we can help.



Online, In Branch and On the Road - Scattergood & Johnson Ltd, there when you need us.

# [www.scatts.co.uk](http://www.scatts.co.uk)