

EM-ETH-GATEWAY-IFS

Integration in a CompactLogix controller from Allen-Bradley



Application note
106032_en_00

© PHOENIX CONTACT 2014-04-28

1 Description

This application note describes how you integrate the EM-ETH-GATEWAY-IFS (Order No.: 2901988) from Phoenix Contact into a Compact Logix controller from Allen-Bradley using the RSLogix 5000 or Studio 5000 software.

For example, in this case, CompactLogix 1769-L-18ER-BB1B and software version V20.01.00 are used.

For the system requirements for operating RSLogix, please refer to the manufacturer's documentation.



Make sure you always use the latest documentation.
It can be downloaded at phoenixcontact.net/products.

Table of contents

1	Description.....	1
2	Integrating the EDS file	3
3	Creating a project	3
4	Integrating the EM-ETH-GATEWAY-IFS	4

2 Integrating the EDS file

To integrate the EM-ETH-GATEWAY-IFS (Order No.: 2901988) into a CompactLogix controller from Allen-Bradley, you need an appropriate device description in EDS format. This “EM-ETH-GATEWAY-IFS.eds” device description can be downloaded at phoenixcontact.net/products in the product download area.

1. Install the device description of the EM-ETH-GATEWAY-IFS via RSLogix, by calling the installation program under “Tools > Hardware installation tool” or via “Start > Programs > Rockwell Software > RSLinx > Tools > EDS Hardware installation tool”.

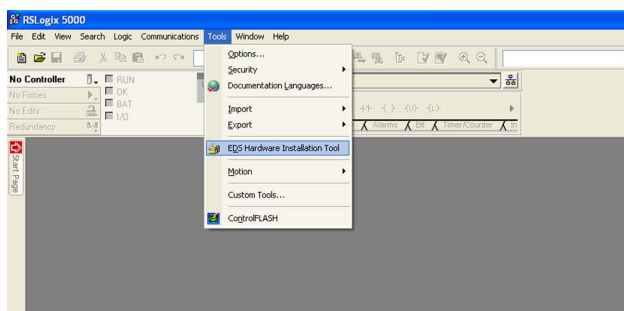


Figure 1 Hardware installation tool

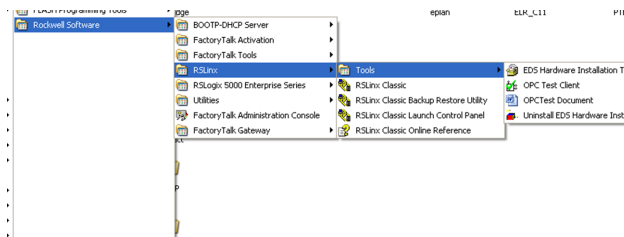


Figure 2 Hardware installation tool

2. Follow the other installation instructions.

3 Creating a project

1. Create a new project by clicking “File > New”.

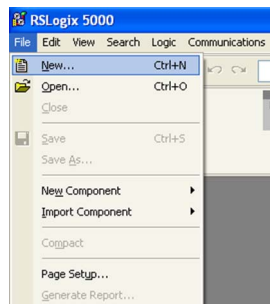


Figure 3 Creating a project

2. Select your controller.

In this example, a CompactLogix 1796-L18ER-BB1B is used.

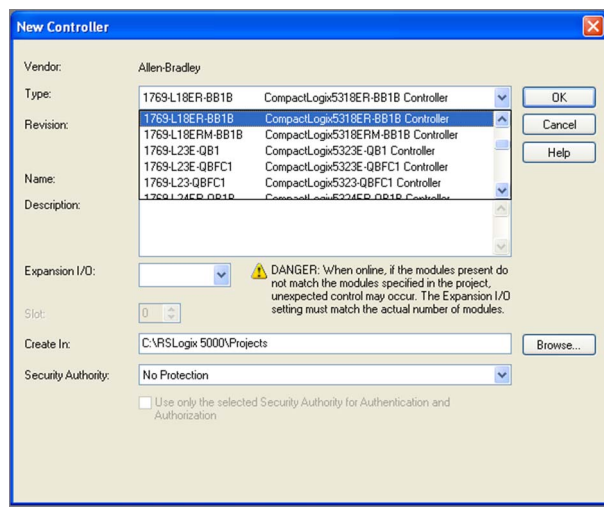


Figure 4 Selecting the controller

3. Set the controller according to your requirements.
4. Assign a project name (in the following “Controller 1”).
5. Specify a storage location.

For details on how to proceed, please refer to the relevant user documentation of the manufacturer.

4 Integrating the EM-ETH-GATEWAY-IFS

1. In the project tree, click in the “Controller Organizer” window and right-click on “Ethernet > New Module”.

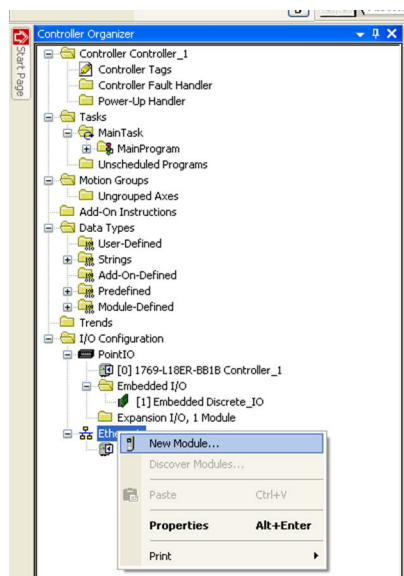


Figure 5 Integrating the new module

The “Select Module Type” dialog box opens.

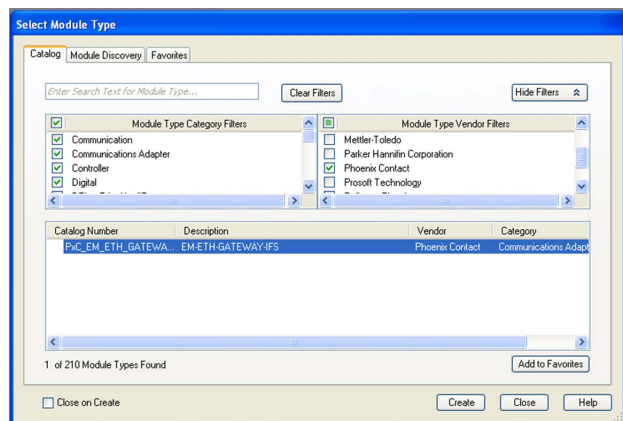


Figure 6 Selecting a module type

2. Activate the “Module Type Vendor Filter”.
3. Select “Phoenix Contact”.
4. Activate the “EM-ETH-GATEWAY-IFS” device description by double clicking it.

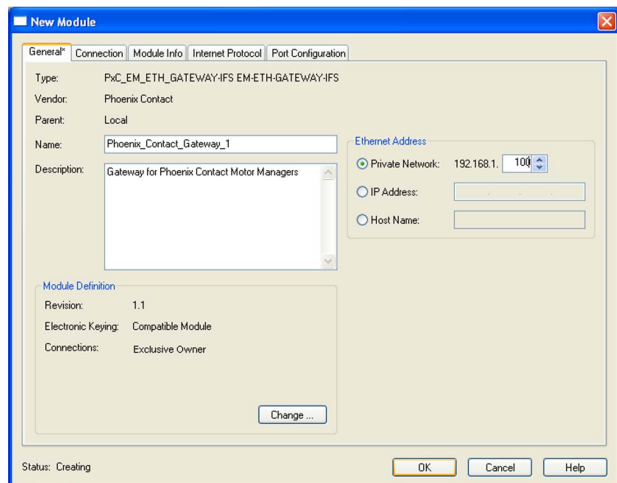


Figure 7 Writing the module

5. Give the device a name (for example, “Phoenix_Contact_Gateway_1”).
 6. Assign an IP address to the device.
 7. Click the “Change” button.
- The “Module definition” window opens.

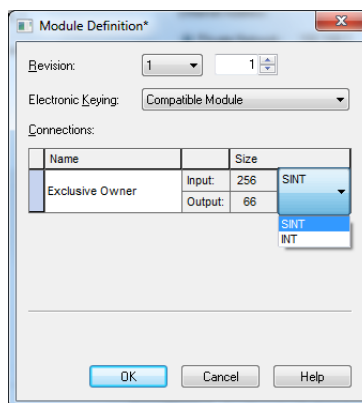


Figure 8 Module definition

8. Change the data type from “SINT” to “INT”.
9. Confirm the change with “OK”.



The IP configuration is downloaded to the device via the FDT/DTM software IFS-CONF. For how to proceed, refer to the “EM...Gateway IFS quick start guide” documentation.

You will then find the device in the project tree.

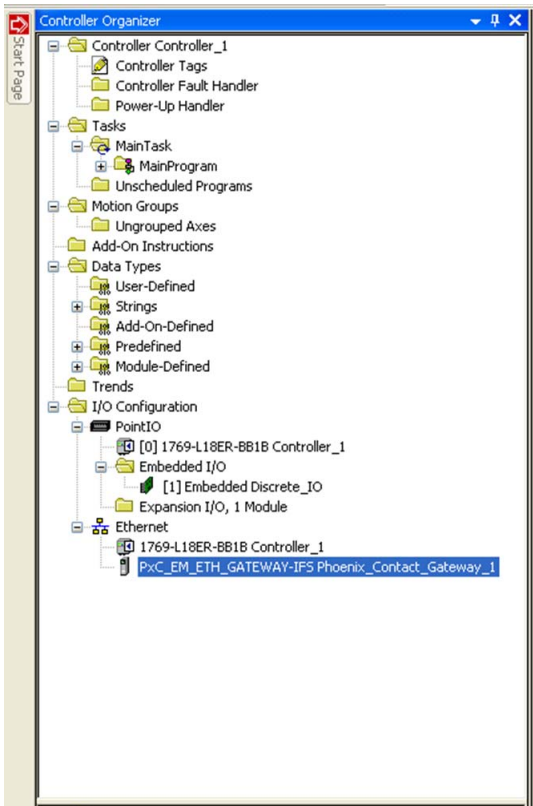


Figure 9 Device in the project tree

The list of transmitted process data can be found under “Controller Tags”.

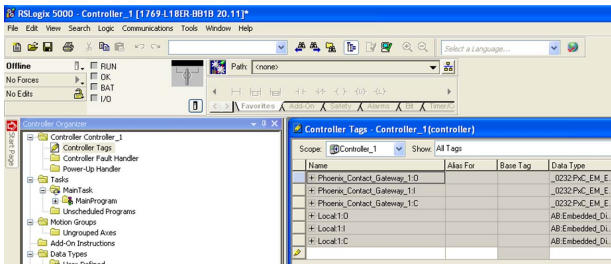


Figure 10 Transmittable process data



**SCATTERGOOD
& JOHNSON LTD**
ELECTRICAL ENGINEERING & FLUID CONTROL DISTRIBUTORS

Est.1899

At Scattergood & Johnson Ltd, we pride ourselves on being a technical distributor to specialist industries.

Working with a range of quality product suppliers across a number of specialist markets, we are not your average 'box shifter' - we are your technical and supply chain partner.

We fully support every product we sell - for free! Our internal team and external sales engineers can answer any product or application question, no matter the complexity.

Backing up this technical ability is a range of 50,000+ products available from stock for nationwide next day delivery (same day if required!), or you can collect what you need from any of our trade counters around the UK.

Select your specialist interest below to learn more about how we can help.



Online, In Branch and On the Road - Scattergood & Johnson Ltd, there when you need us.

www.scatts.co.uk