

**KEEP THIS GUIDE FOR FUTURE REFERENCE**

This information is designed to help suitably qualified personnel install and operate Mechan Safety Switch equipment.

Before using this product, read this guide thoroughly along with any relevant European and/or National standards e.g. Machinery Directive 89/392/EEC and its amendments, Provision and Use of Work Equipment Regulations.

**Further information can be obtained from
Mechan Controls**

Description

MAGNASAFE MS1 safety switches are magnetically operated non-contact safety switch for use in machine guarding applications.

The non-contact operation makes the MS1 easy to install and tolerant to misalignment, providing a simple and reliable solution to machine guard interlocking.

The MS1 is manufactured in a robust ABS housing, and both switch and actuator are fully sealed to IP67 and suitable for use in wet or dusty environments

With correct installation, the MS1 safety switches comply with the guidelines given in EN1088.

Operation

When the MS1 safety switch and actuator are within the specified operating range (See table on page 3 for switching distances), the **Safety Contacts** will be closed and the **Auxiliary Contact** will be open.

When the actuator moves out of the operating range, the **Safety Contacts** will open and the **Auxiliary Contact** will close for indication.

The MS1 safety switch and actuator are designed to approach each other from most angles. When the switch is closed the targets on the printed face of the switch must be aligned.

Applications

Machine guards where door locking is not required.
Food and Beverage packing/filling systems
Diary
Pharmaceutical
Paper Industry
Can Forming and Filling, (Aluminum, Steel, Plastic)
Semiconductor Manufacture/Assembly.



Listed

**Approvals**

CE	Complies with the relevant sections of the CE marking directive.
UL	UL 508, Industrial Control Equipment

EUROPEAN DIRECTIVES

Machinery Directive 98/37/EC
Low Voltage Directive 73/23/EC
Electromagnetic Compatibility Directive 89/336/EC

EUROPEAN STANDARDS

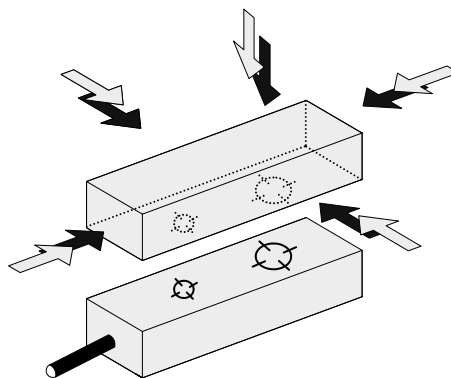
EN292	Safety of Machinery Basic concepts, general principles for design.
EN 60204	Safety of Machinery Electrical equipment of machines.
EN 954-1	Safety of Machinery Safety related parts of controls systems
EN 1088	Interlocking devices associated with guards.
EN 60947-5-3	Safety of Machinery Specification for low voltage switchgear and control gear.

Declaration of Conformity

A Declaration of Conformity may be obtained from Mechan Controls PLC, Tel +44(0)1695 722264 or from the Mechan Web Site at www.mechancontrols.co.uk

Mounting

The MS1 safety switches can approach each other from most angles. When the guard is closed the targets on the printed face of the switch and actuator must be aligned.

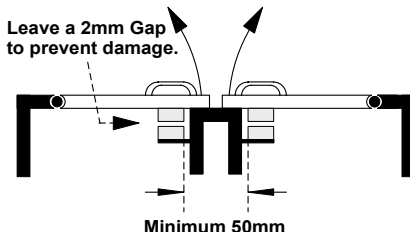


Mount the switch on to the machine frame and the Actuator on to the opening edge of the door. Always try to mount the switch on non-ferrous material. (*Ferrous materials may reduce the switching distance.*)

Use the tamper proof screws provided to make more secure.

Do not use the safety switch as a door stop.

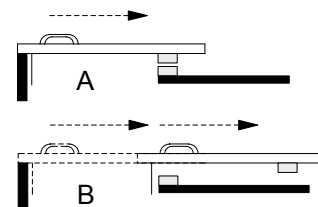
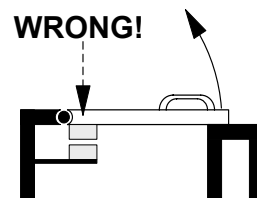
Leave a minimum of 50 mm between any adjacent switches.



EN 1088

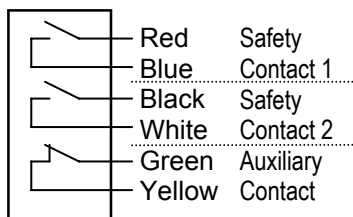
Provides some mounting suggestions, see example opposite.

When fixing the safety switch to a sliding door (A), ensure that when the door is opened (B) it is not easily accessible, helping prevent the system being overridden.

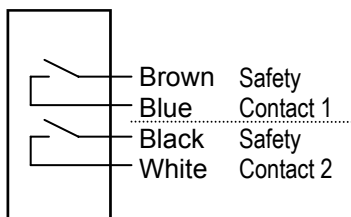


Contacts & Connections

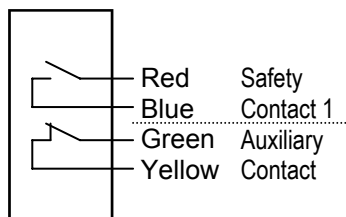
MS1-21 (ac or dc)



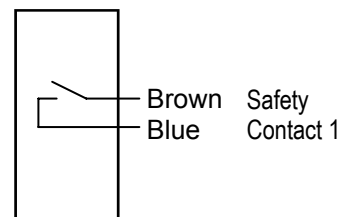
MS1-20 (ac or dc)



MS1-11 (ac or dc)



MS1-10 (ac or dc)



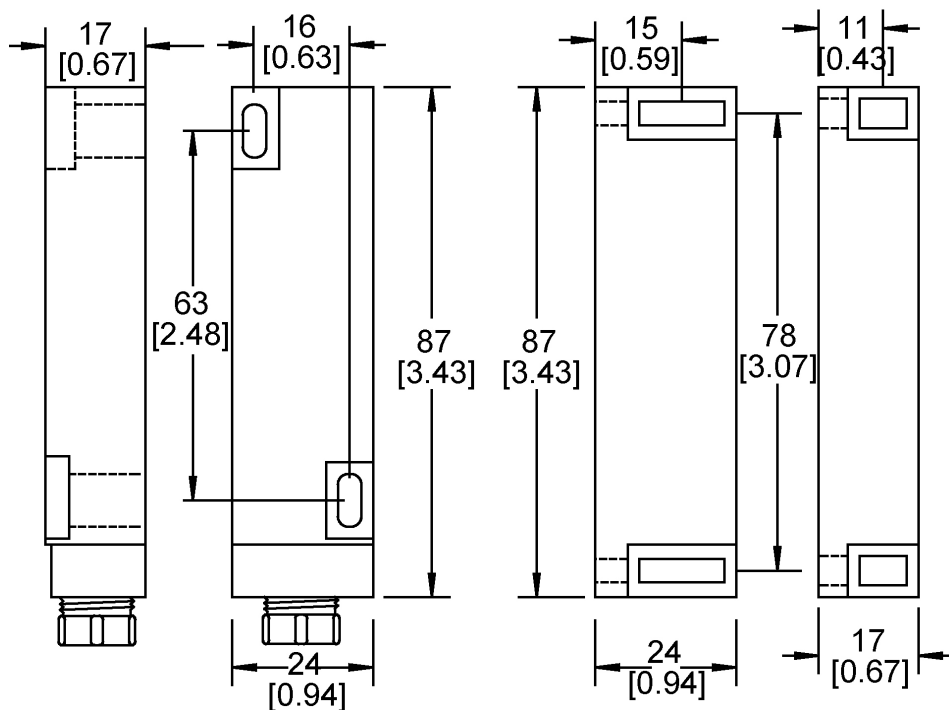
All Safety Contacts require an external fuse.

	Safety Contact External Fuse AC	Safety Contact External Fuse DC
MS1-21 / MS1-20 / MS1-11 / MS1-10	1.6 Amps quick blow	0.8 Amps Quick Blow
MS1-10-110VAC	2.5 Amps quick blow	N/A

Dimensions

MS1 RED ABS HOUSING

Dimensions in mm and [inches in brackets]



SWITCH

ACTUATOR

Technical Specifications

Type	AC	DC	110V AC
Contact Options	2 x N/O Safety & 1 x N/C Aux. 2 x N/O Safety 1 x N/O Safety & 1 x N/C Aux. 1 x N/O Safety	2 x N/O Safety & 1 x N/C Aux. 2 x N/O Safety 1 x N/O Safety & 1 x N/C Aux. 1 x N/O Safety	1 x N/O Safety
Safety Contact Rating	230Vac/2Amps	30Vdc / 1Amp Inductive/Resistive	110Vac/3Amps
Safety Contact Operating Distance	10mm ON / 25mm OFF	10mm ON / 25mm OFF	10mm ON / 25mm OFF
Safety Contact Close/Drop/Bounce	3ms / 2.1ms / 0.7ms	3ms / 2.1ms / 0.7ms	3ms / 2.1ms / 0.7ms
Auxiliary Contact Rating	15W / 10VA	15W / 10VA	N/A
Auxiliary Contact Operating Distance	8mm OFF / 10mm ON	8mm OFF / 10mm ON	N/A
Auxiliary Contact Close/Drop/Bounce	0.5ms / 0.3ms / 0.7ms	0.5ms / 0.3ms / 0.7ms	N/A
Internal Fuse	2Amp Fast Acting	1Amp Fast Acting	3Amp Fast Acting
External Fuse (Customer Supplied)	1.6 Amps Fast Acting	0.8 Amp Fast Acting	2.5Amps Fast Acting
IP Rating	IP67	IP67	IP67
Vibration / Shock	50—100Hz / 10g	50—100Hz / 10g	50—100Hz / 10g
Operating Temperature	-10 to +55C	-10 to +55C	-10 to +55C
Mounting & Fixture	Target to Target	Target to Target	Target to Target
Connection	Pre-wired	Pre-wired	Pre-wired
Construction	Red ABS Resin Filled	Red ABS Resin Filled	Red ABS Resin Filled

Part Numbers

PART NUMBER	DESCRIPTION	STOCK CODE
DC		
MS1-10-DC-03M	1 x N/O, DC, ABS, Safety Switch & Actuator, 3 metre Pre-wired	350.050
MS1-11-DC-03M	1 x N/O + 1 x N/C, DC, ABS, Safety Switch & Actuator, 3 metre Pre-wired	350.051
MS1-20-DC-03M	2 x N/O, DC, ABS, Safety Switch & Actuator, 3 metre Pre-wired	350.052
MS1-20-DC-05M	2 x N/O, DC, ABS, Safety Switch & Actuator, 5 metre Pre-wired	350.054
MS1-21-DC-03M	2 x N/O + 1 x N/C, DC, ABS, Safety Switch & Actuator, 3 metre Pre-wired	350.053
AC		
MS1-10-AC-03M	1 x N/O, AC, ABS, Safety Switch & Actuator, 3 metre Pre-wired	350.000
MS1-11-AC-03M	1 x N/O + 1 x N/C, AC, ABS, Safety Switch & Actuator, 3 metre Pre-wired	350.001
MS1-11-AC-10M	1 x N/O + 1 x N/C, AC, ABS, Safety Switch & Actuator, 10 metre Pre-wired	350.006
MS1-20-AC-03M	2 x N/O, AC, ABS, Safety Switch & Actuator, 3 metre Pre-wired	350.002
MS1-21-AC-03M	2 x N/O + 1 x N/C, AC, ABS, Safety Switch & Actuator, 3 metre Pre-wired	350.003
MS1-21-AC-10M	2 x N/O + 1 x N/C, AC, ABS, Safety Switch & Actuator, 10 metre Pre-wired	350.007
MS1-10-110AC-03M	1 x N/O, 110vAC, ABS, Safety Switch & Actuator, 3 metre Pre-wired	350.004
MS1-10-110AC-06M	1 x N/O, 110vAC, ABS, Safety Switch & Actuator, 6 metre Pre-wired	350.005
LONGER CABLES AVAILABLE		

Specification Changes

In the interest of product development, specifications are subject to change without notice.

It is the responsibility of the user to ensure compliance with any acts or by-laws that may be in force.

All information regarding Mechan Equipment is believed to be accurate at the time of printing. Responsibility cannot be accepted for errors or omissions.



MECHAN CONTROLS PLC
14/16 Seddon Place
Stanley Industrial Estate
Skelmersdale
Lancashire WN8 8EB

UNITED KINGDOM
Tel: +44 (0)1695 722264
Fax: +44 (0)1695 729664

Document Number: 350-400 Issue.9

Copyright Mechan Controls PLC 2007

Email: sales@mechancontrols.co.uk
Web Site: www.mechancontrols.co.uk



SCATTERGOOD & JOHNSON LTD

ELECTRICAL ENGINEERING & FLUID CONTROL DISTRIBUTORS

Est.1899

At Scattergood & Johnson Ltd, we pride ourselves on being a technical distributor to specialist industries.

Working with a range of quality product suppliers across a number of specialist markets, we are not your average 'box shifter' - we are your technical and supply chain partner.

We fully support every product we sell - for free! Our internal team and external sales engineers can answer any product or application question, no matter the complexity.

Backing up this technical ability is a range of 50,000+ products available from stock for nationwide next day delivery (same day if required!), or you can collect what you need from any of our trade counters around the UK.

Select your specialist interest below to learn more about how we can help.



Online, In Branch and On the Road - Scattergood & Johnson Ltd, there when you need us.

www.scatts.co.uk