

Compatibility:  
**This Option is suitable for use on the following product ranges:**  
 Optidrive P2 (See table below for compatible models)  
 Optidrive HVAC (See table below for compatible models)

Part No : OPT-2-ISOLO-S4/OPT-2-ISOLO-S5

Invertek Drives Ltd  
 Offa's Dyke Business  
 Park  
 Welshpool  
 Powys, UK  
 SY21 8JF



# Isolator Option Installation Guide

The Isolator option is specifically designed to be used with the Optidrive P2 and Optidrive HVAC range of variable speed drive products and is intended for professional incorporation into complete equipment or systems. If installed incorrectly it may present a safety hazard. Before commencing installation and commissioning, the user should ensure they are fully familiar with the product, and in particular have read the important safety information and warnings contained in the Optidrive P2 / Optidrive HVAC User Guide.

**Overview**  
 The Isolator option is intended solely to be installed onto the drives detailed in the Compatibility section of this document, the Isolator option provides the following functionality:-

- Local drive Isolation for safe maintenance.
- Padlock "lock-off" ability.
- Isolator "Off" position indicator.

**Compatibility table**

Drive Model Number	kW	Drive Model Number	HP	Frame Size	Required Isolator Option
OD_-2-42055-3KF*N	5.5	OD_-2-42075-3HF*N	7.5	4	OPT-2-ISOLO-S4
OD_-2-42075-3KF*N	7.5	OD_-2-42100-3HF*N	10	4	
OD_-2-42110-3KF*N	11	OD_-2-42150-3HF*N	15	4	
OD_-2-44110-3KF*N	11	OD_-2-44150-3HF*N	15	4	
OD_-2-44150-3KF*N	15	OD_-2-44200-3HF*N	20	4	
OD_-2-44185-3KF*N	18.5	OD_-2-44250-3HF*N	25	4	
OD_-2-44220-3KF*N	22	OD_-2-44300-3HF*N	30	4	
OD_-2-52150-3KF*N	15	OD_-2-52020-3HF*N	20	5	OPT-2-ISOLO-S5
OD_-2-52185-3KF*N	18.5	OD_-2-52025-3HF*N	25	5	
OD_-2-54300-3KF*N	30	OD_-2-54040-3HF*N	40	5	
OD_-2-54370-3KF*N	37	OD_-2-54050-3HF*N	50	5	
ODV-2-54450-3KF*N	45	ODV-2-54060-3HF*N	60	5	

Note : " \_ " = V or P " \* " = 1 or 4

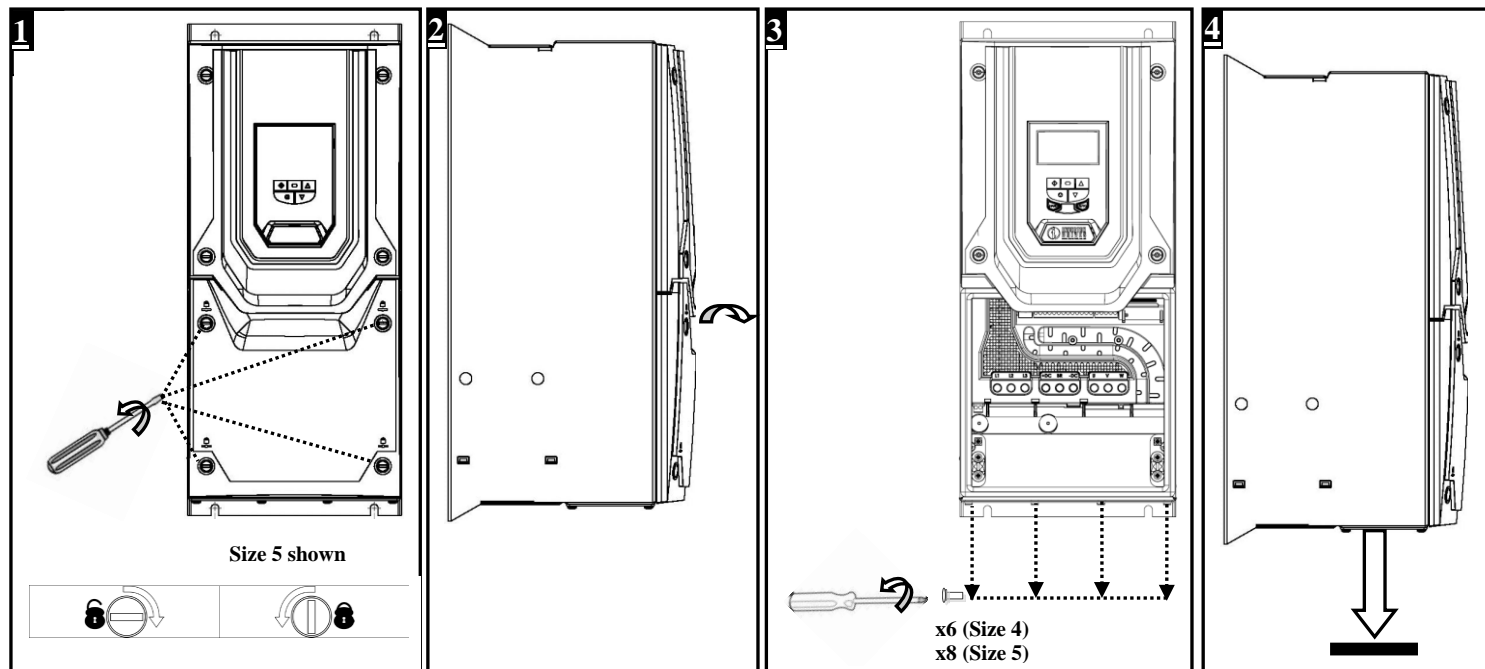
**Tools Required**

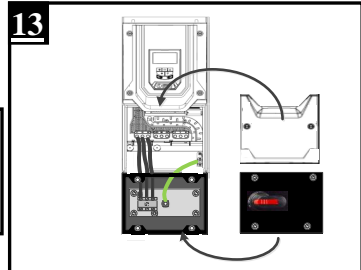
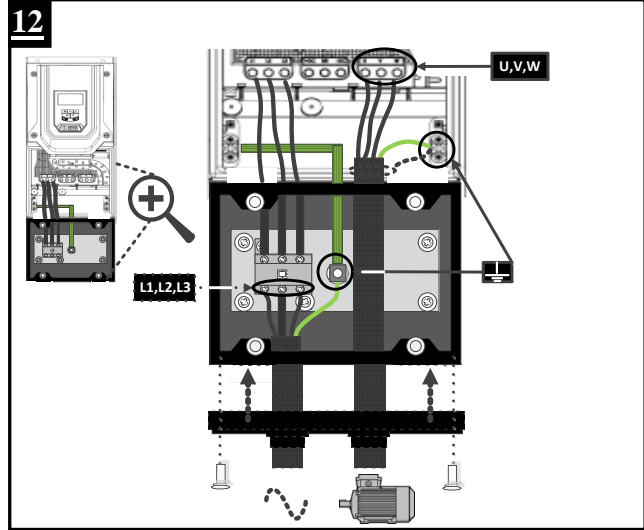
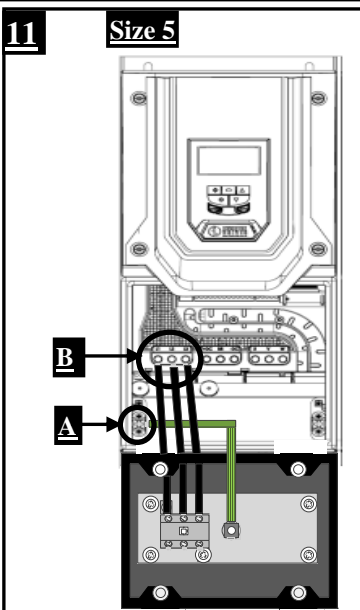
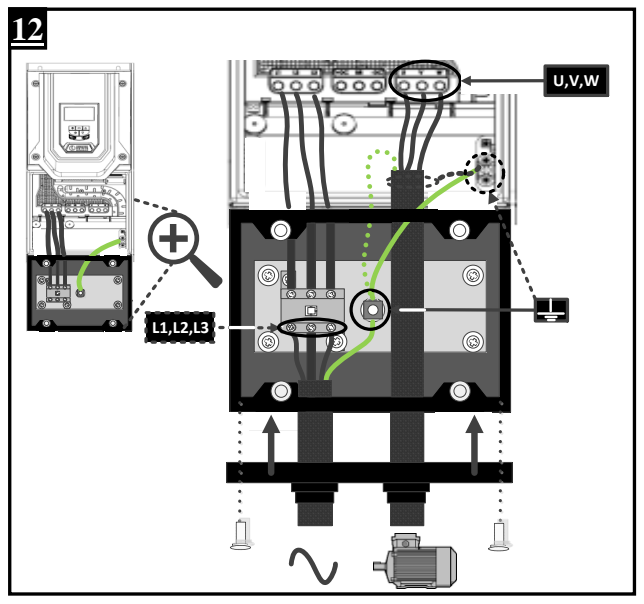
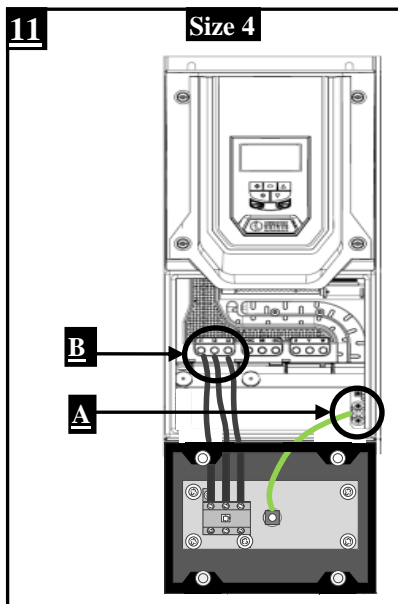
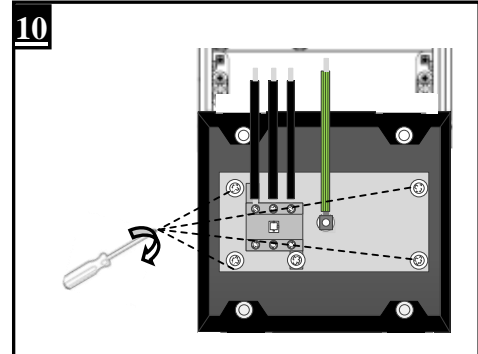
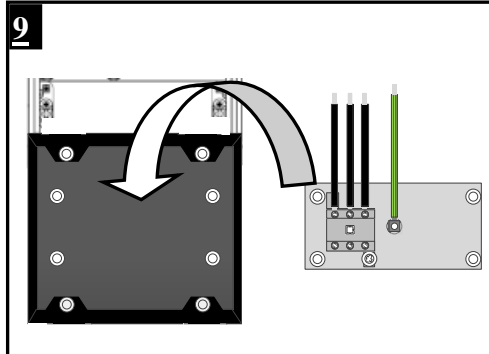
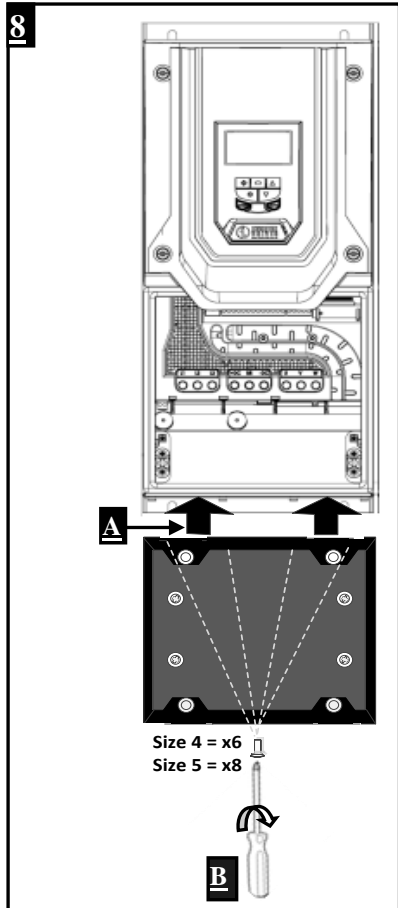
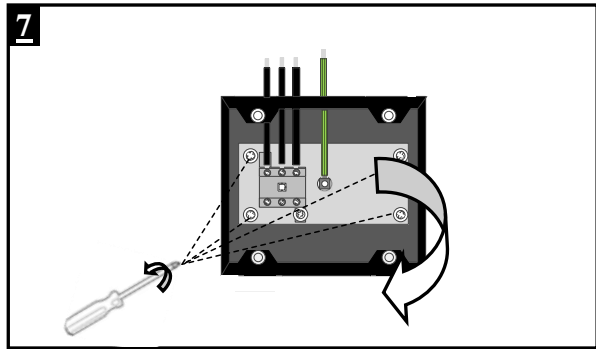
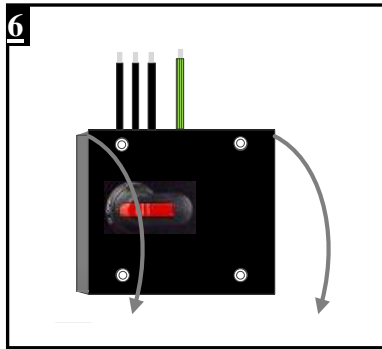
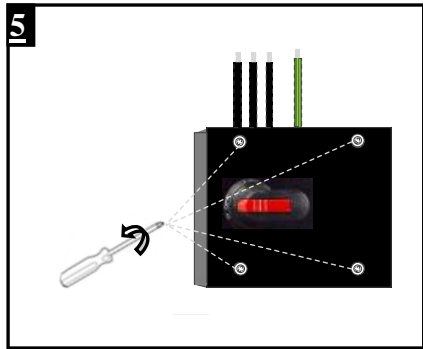


**Installation**

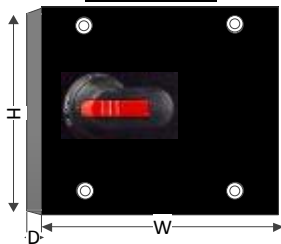


**\*\*\*Ensure the drive is isolated from mains power prior to installing the Isolator option\*\*\***





**Dimensions**



	H (mm)	W (mm)	D (mm)
OPT-2-ISOLO-S4	170	173	80
OPT-2-ISOLO-S5	230	235	100



82-ISOLO\_V1.0



# SCATTERGOOD & JOHNSON LTD

ELECTRICAL ENGINEERING & FLUID CONTROL DISTRIBUTORS

Est.1899

At Scattergood & Johnson Ltd, we pride ourselves on being a technical distributor to specialist industries.

Working with a range of quality product suppliers across a number of specialist markets, we are not your average 'box shifter' - we are your technical and supply chain partner.

We fully support every product we sell - for free! Our internal team and external sales engineers can answer any product or application question, no matter the complexity.

Backing up this technical ability is a range of 50,000+ products available from stock for nationwide next day delivery (same day if required!), or you can collect what you need from any of our trade counters around the UK.

Select your specialist interest below to learn more about how we can help.



Online, In Branch and On the Road - Scattergood & Johnson Ltd, there when you need us.

# [www.scatts.co.uk](http://www.scatts.co.uk)