



PEPPERL+FUCHS Bedienkarte KF-UFC-**1.D**

- Messwertanzeige
- Einheit: Hz, U/min, ...
- Eingang: Leitungsfehler (Glättung, Pulse/Einheit, Prellfilter, Anlaufüberbrückung), Leitungsbruch (Leitungskurzschluss)
- Ausgang: Relais 1, Relais 2, OT1, I_{out}, Service (Passwort, Sprache, Rücksetzen)
- Grenzwert: Min/Max, Schaltpunkt, Hysterese, Wirkungsrichtung, Wiedereinschalt-sperre
- Impulsteiler: Teller, Impulslänge, Wiedereinschalt-sperre
- Störmeldung: Kennlinie, Störstrom, Anfangswert, Endwert, Invertiert

PEPPERL+FUCHS Operator card KF-UFC-**1.D**

- Measured value indication
- Unit: Hz, rpm, ...
- Input: Line fault (Smoothing, Pulse/unit, Contact bounce filter, Startup override), Lead breakage (Short circuit)
- Output: Relay 1, Relay 2, OT1, I_{out}, Service (Password, Language, Reset)
- Limit switch: Min/Max, Trip, Hysteresis, Mode, Alarm freeze
- Serial switch: Pulse divider, Separator, Pulse duration, Signal défaut, Alarm freeze
- Characteristic: Fault current, Initial value, Final value, Inverted

PEPPERL+FUCHS Instructions KF-UFC-**1.D**

- Affichage valeur de mesure
- Unité: Hz, tr/min, ...
- Entrée: Défaut de ligne (Filtrage, Impulsion/unité, Filtre anti-rebonds, Shunt de démarrage), Coupure de ligne (Court-circuit de ligne)
- Sortie: Relais 1, Relais 2, OT1, I_{out}, Service (Mot de passe, Langue, Réinitialisation)
- Seuil: Min/Max, Point de commutation, Course différentielle, Sens d'action, Verrouillage contre le réenclenchement
- Reprod. impuls. entrée: Réduction impuls., Diviseur, Durée impulsion, Verrouillage contre le réenclenchement
- Error indication: Error indication, Verrouillage contre le réenclenchement
- Characteristic: Courant de défaut, valeur initiale, Valeur finale, Invertit

PEPPERL+FUCHS Tarjeta de Consulta rápida KF-UFC-**1.D**

- Display Valor de medición
- Unidad: Hz, rpm/min, ...
- Entrada: Fallo de cable (Alisar, Impulsos/unidad, Filtro antibote, Puenteado de arranque), Rotura del conductor (Cortocircuito)
- Salida: Relé 1, Relé 2, OT1, I_{out}, Servicio (Password, Lenguaje, Reponer)
- Valor limite: Min/Máx, Punto de comutación, Histéresis, Dirección de acción, Congelación del arranque
- Comutación progresiva: Aviso de perturbación, Congelación del arranque
- Divisor de impulsos: Longitud de impulsos, Congelación del arranque
- Linea característica: Línea característica, Corriente perturbadora, Valor inicial, Valor final, Invertido

PEPPERL+FUCHS Scheda per l'uso KF-UFC-**1.D**

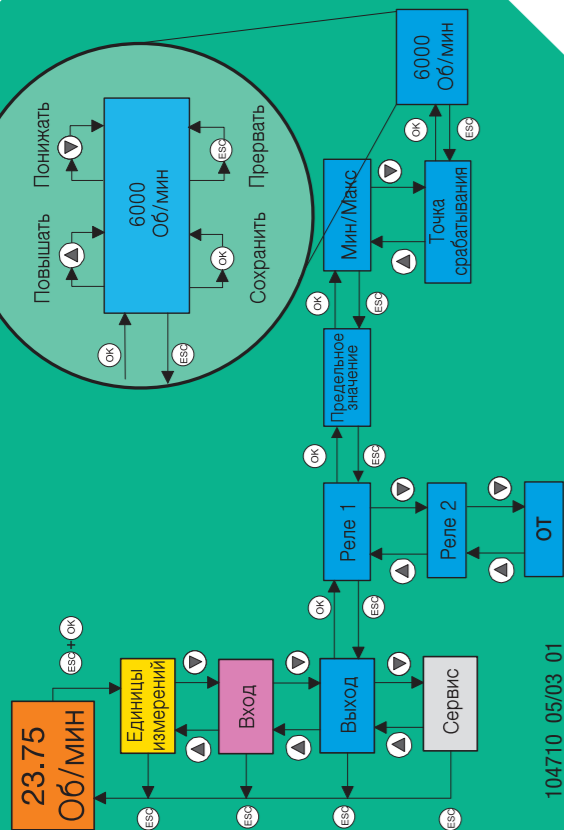
- Display valore
- Unità: Hz, g/min, ...
- Input: Errore di linea (Livellamento, Impulsi/Unità, Filtro antirimbaldi, Shunt dell'avviamento), Rottura conduttore (Cortocircuito)
- Output: Relè 1, Relè 2, OT1, I_{out}, Servizio (Password, Lingua, Resettare)
- Valor limite: Min/Max, Punto de comando, Isteresis, Funzione di lavoro, Blocco riconnessione
- Azionam. sequenziale: Signale di disturbo, Blocco riconnessione
- Divisore impulsi: Suddivisore, Lung'h. impulsi
- Curva caratteristica: Curva caratteristica, Corrente di disturbo, Valore iniziale, Valore finale, Invertito

PEPPERL+FUCHS Схема обслуживания KF-UFC-**1.D**

- Индикация измеренных величин
- Единицы измерений: Гц, Об/мин, ...
- Вход: Ошибка в линии (Сглаживание, Импульс / Единица измерения, Фильтр дребезга контактов, Коррекция при запуске), LB, SC
- Выход: Реле 1, Реле 2, ОТ1, I (вых.), Сервис (Пароль, Язык, Сброс (обнуление))
- Предельное значение: Мин/Макс, Точка срабатывания, Гистерезис, Режим работы, Запрет перезапуска
- Опережающее срабатывание: Делитель импульсов, Делитель, Длина импульса, Запрет перезапуска
- Индикация ошибки: Индикация ошибки, Запрет перезапуска
- Характеристика: Характеристика, Ток ошибки, Начальное значение, Конечное значение, инвертир.

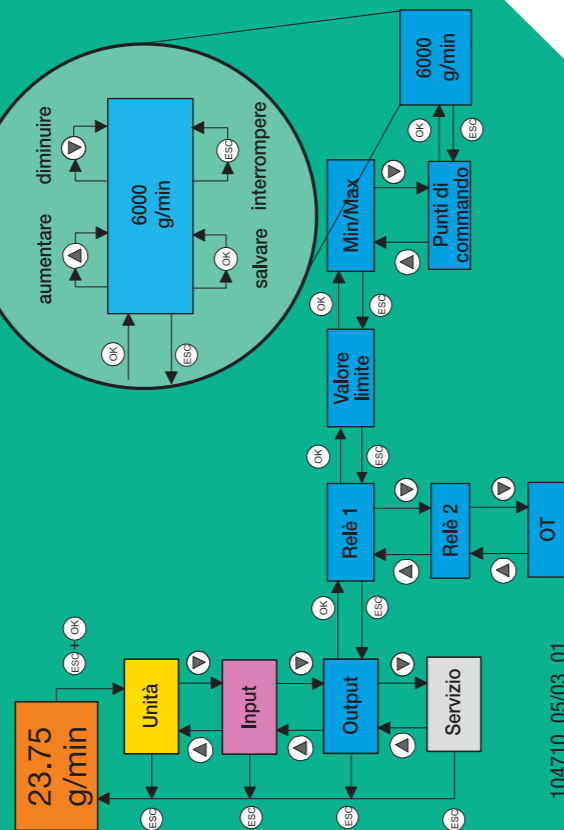


KF**-UFC-**1.D



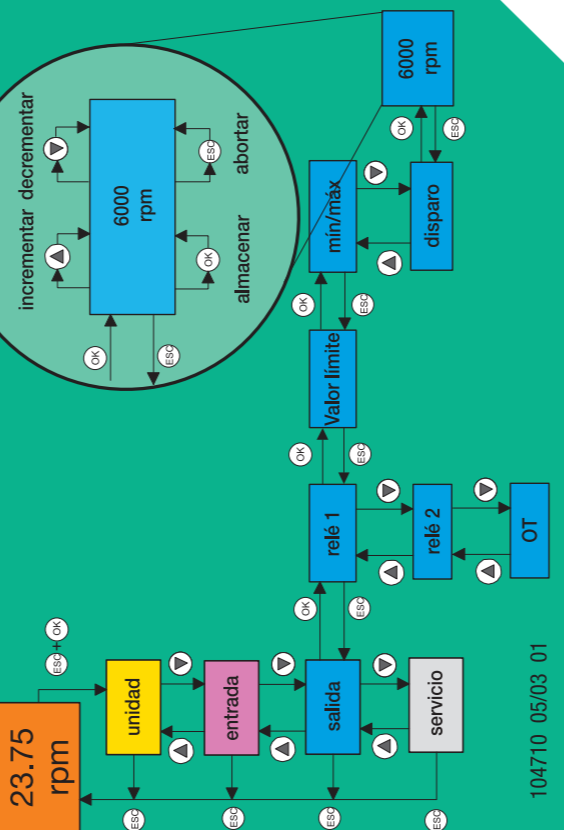
104710 05/03 01

KF**-UFC-**1.D



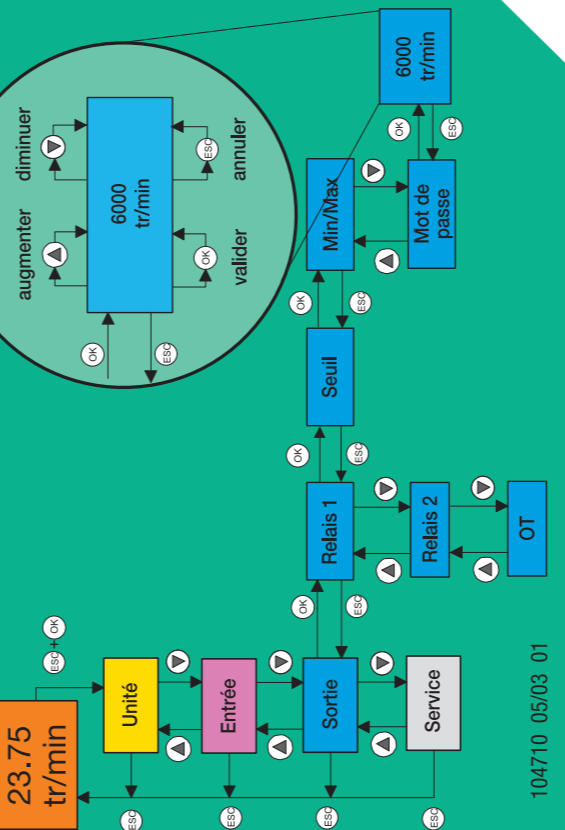
104710 05/03 01

KF**-UFC-**1.D



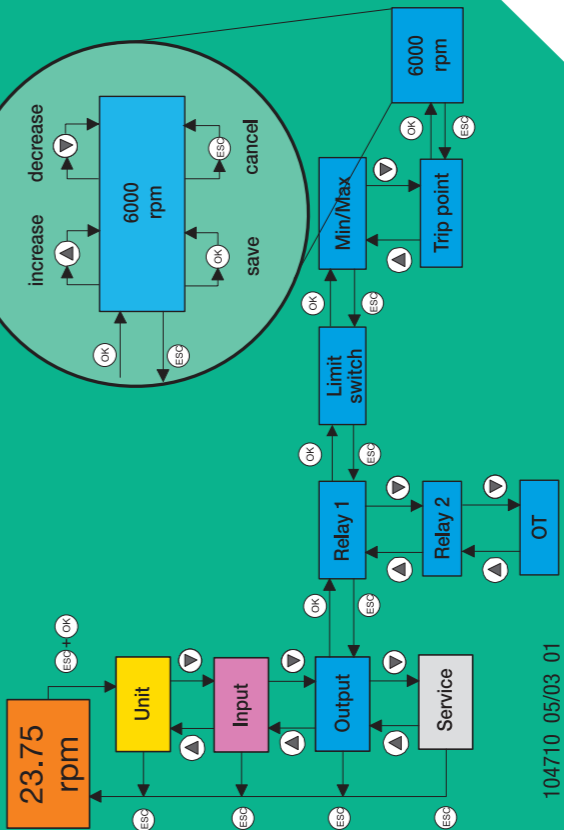
104710 05/03 01

KF**-UFC-**1.D



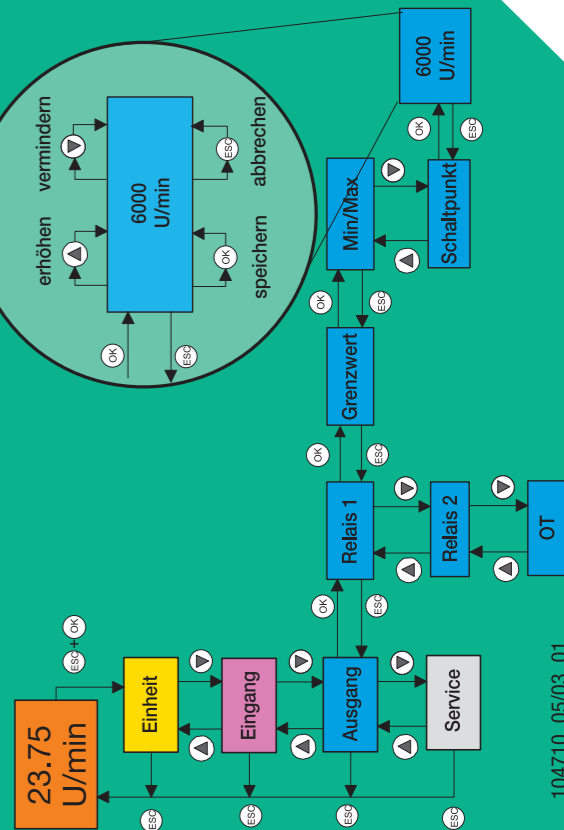
104710 05/03 01

KF**-UFC-**1.D

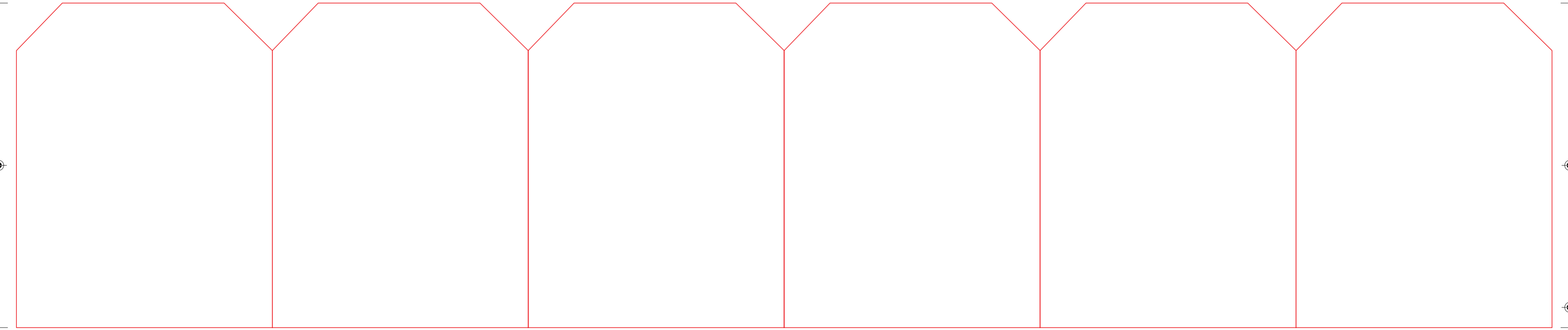


104710 05/03 01

KF**-UFC-**1.D



104710 05/03 01





SCATTERGOOD & JOHNSON LTD

ELECTRICAL ENGINEERING & FLUID CONTROL DISTRIBUTORS

Est.1899

At Scattergood & Johnson Ltd, we pride ourselves on being a technical distributor to specialist industries.

Working with a range of quality product suppliers across a number of specialist markets, we are not your average 'box shifter' - we are your technical and supply chain partner.

We fully support every product we sell - for free! Our internal team and external sales engineers can answer any product or application question, no matter the complexity.

Backing up this technical ability is a range of 50,000+ products available from stock for nationwide next day delivery (same day if required!), or you can collect what you need from any of our trade counters around the UK.

Select your specialist interest below to learn more about how we can help.



Online, In Branch and On the Road - Scattergood & Johnson Ltd, there when you need us.

www.scatts.co.uk