

**Features**

- 1-channel isolated barrier
- 24 V DC supply (loop powered)
- Current limit 80 mA at 11 V DC
- Up to SIL 3 acc. to IEC 61508

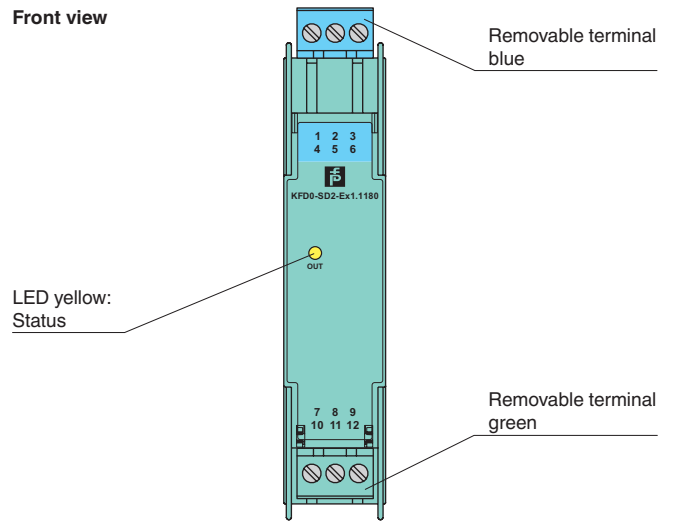
**Function**

This isolated barrier is used for intrinsic safety applications. It supplies power to solenoids, LEDs, and audible alarms located in a hazardous area.

It is loop powered, so the available energy at the output is received from the input signal. The output signal has a resistive characteristic. As a result the output voltage and current are dependent on the load and the input voltage.

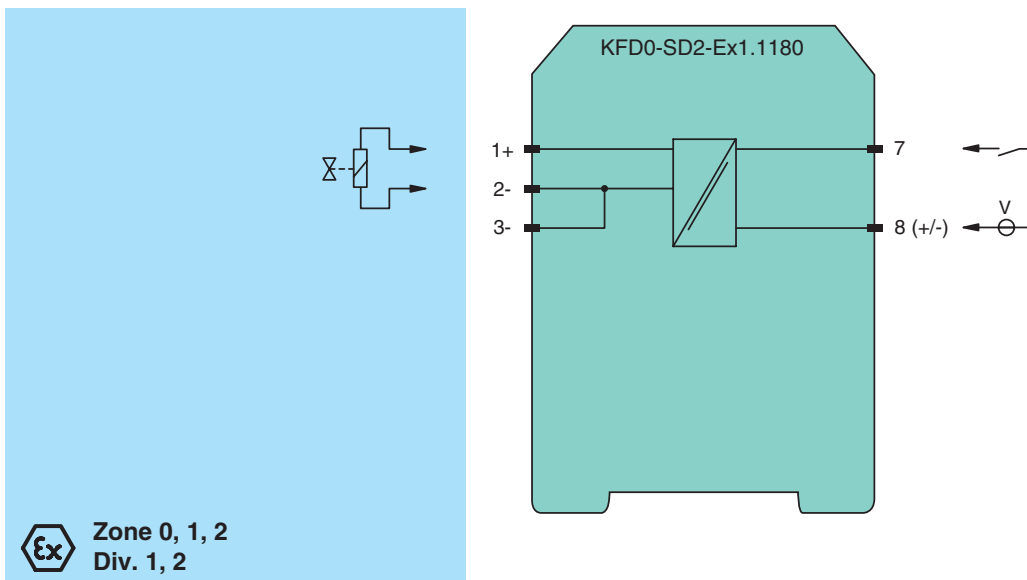
At full load, 11 V at 80 mA is available for the hazardous area application.

**Assembly**



**SIL 3**

**Connection**



Release date 2019-12-02 16:56 Date of issue 2019-12-02 133239\_eng.xml

Refer to "General Notes Relating to Pepperl+Fuchs Product Information".

Pepperl+Fuchs Group  
www.pepperl-fuchs.com

USA: +1 330 486 0002  
pa-info@us.pepperl-fuchs.com

Germany: +49 621 776 2222  
pa-info@de.pepperl-fuchs.com

Singapore: +65 6779 9091  
pa-info@sg.pepperl-fuchs.com

<b>General specifications</b>		
Signal type		Digital Output
<b>Functional safety related parameters</b>		
Safety Integrity Level (SIL)		SIL 3
<b>Supply</b>		
Rated voltage	$U_r$	loop powered
Power dissipation		< 1 W ( $\leq 30$ V)
<b>Input</b>		
Connection side		control side
Connection		terminals 7, 8
Rated voltage	$U_r$	20 ... 35 V DC
Current		140 mA at 20 V input voltage, load = 140 $\Omega$ 100 mA at 35 V input voltage, load = 140 $\Omega$
<b>Output</b>		
Connection side		field side
Connection		terminals 1+, 2-
Internal resistor	$R_i$	$\leq 150 \Omega$
Current	$I_e$	$\geq 80$ mA
Voltage	$U_e$	$\geq 11$ V
Open loop voltage	$U_s$	$\geq 22.7$ V
Output rated operating current		80 mA
Output signal		These values are valid for the rated operating voltage 20 ... 35 V DC.
Energized/De-energized delay		single operation: typ. 1.7 ms/50 $\mu$ s; periodical: typ. 5 $\mu$ s/50 $\mu$ s
<b>Indicators/settings</b>		
Display elements		LED
Labeling		space for labeling at the front
<b>Directive conformity</b>		
Electromagnetic compatibility		
Directive 2014/30/EU		EN 61326-1:2013 (industrial locations)
<b>Conformity</b>		
Electromagnetic compatibility		NE 21:2006
Degree of protection		IEC 60529:2001
Protection against electrical shock		UL 61010-1:2004
<b>Ambient conditions</b>		
Ambient temperature		-20 ... 60 $^{\circ}$ C (-4 ... 140 $^{\circ}$ F)
<b>Mechanical specifications</b>		
Degree of protection		IP20
Connection		screw terminals
Mass		approx. 100 g
Dimensions		20 x 107 x 115 mm (0.8 x 4.2 x 4.5 inch) , housing type B1
Mounting		on 35 mm DIN mounting rail acc. to EN 60715:2001
<b>Data for application in connection with hazardous areas</b>		
EU-type examination certificate		BASEEFA 06 ATEX 0252
Marking		II (1)G [Ex ia Ga] IIB, II (1)D [Ex ia Da] IIIB, I (M1) [Ex ia Ma] I (-20 $^{\circ}$ C $\leq T_{amb}$ $\leq 60$ $^{\circ}$ C)
Voltage	$U_o$	25.2 V
Current	$I_o$	184 mA
Power	$P_o$	1.159 W
Type of protection [EEx ia]		
Input		
Maximum safe voltage	$U_m$	250 V (Attention! The rated voltage can be lower.)
Certificate		TÜV 99 ATEX 1499 X
Marking		II 3G Ex nA II T4 [device in zone 2]
Galvanic isolation		
Input/Output		safe electrical isolation acc. to IEC/EN 60079-11, voltage peak value 375 V
Directive conformity		
Directive 2014/34/EU		EN 60079-0:2012+A11:2013 , EN 60079-11:2012 , EN 60079-15:2010
<b>International approvals</b>		
FM approval		
Control drawing		116-0309
UL approval		
Control drawing		116-0316 (cULus)
IECEX approval		
IECEX certificate		IECEX BAS 06.0058 IECEX CML 19.0093X

Release date 2019-12-02 16:56 Date of issue 2019-12-02 133239\_eng.xml

Refer to "General Notes Relating to Pepperl+Fuchs Product Information".

Pepperl+Fuchs Group  
www.pepperl-fuchs.com

USA: +1 330 486 0002  
pa-info@us.pepperl-fuchs.com

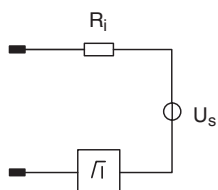
Germany: +49 621 776 2222  
pa-info@de.pepperl-fuchs.com

Singapore: +65 6779 9091  
pa-info@sg.pepperl-fuchs.com

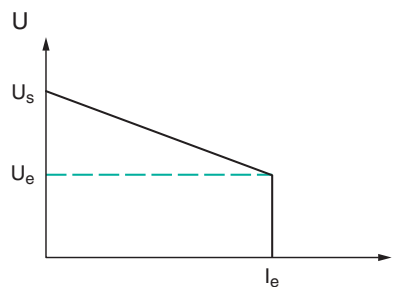
IECEx marking	[Ex ia Ga] IIC , [Ex ia Da] IIIC , [Ex ia Ma] I Ex ec IIC T4 Gc
General information	
Supplementary information	Observe the certificates, declarations of conformity, instruction manuals, and manuals where applicable. For information see <a href="http://www.pepperl-fuchs.com">www.pepperl-fuchs.com</a> .

## Output characteristics

Output circuit diagram



Output characteristic





# SCATTERGOOD & JOHNSON LTD

ELECTRICAL ENGINEERING & FLUID CONTROL DISTRIBUTORS

Est.1899

At Scattergood & Johnson Ltd, we pride ourselves on being a technical distributor to specialist industries.

Working with a range of quality product suppliers across a number of specialist markets, we are not your average 'box shifter' - we are your technical and supply chain partner.

We fully support every product we sell - for free! Our internal team and external sales engineers can answer any product or application question, no matter the complexity.

Backing up this technical ability is a range of 50,000+ products available from stock for nationwide next day delivery (same day if required!), or you can collect what you need from any of our trade counters around the UK.

Select your specialist interest below to learn more about how we can help.



Online, In Branch and On the Road - Scattergood & Johnson Ltd, there when you need us.

# [www.scatts.co.uk](http://www.scatts.co.uk)