

## iC60H RCBO PoN - A9D.....

en



**Schneider**  
Electric

This installation sheet must be kept for future use.

**PLEASE NOTE**

- This product must be installed, connected and used in compliance with prevailing standards and/or installation regulations.
- Disconnect all power supply before installing and uninstalling.

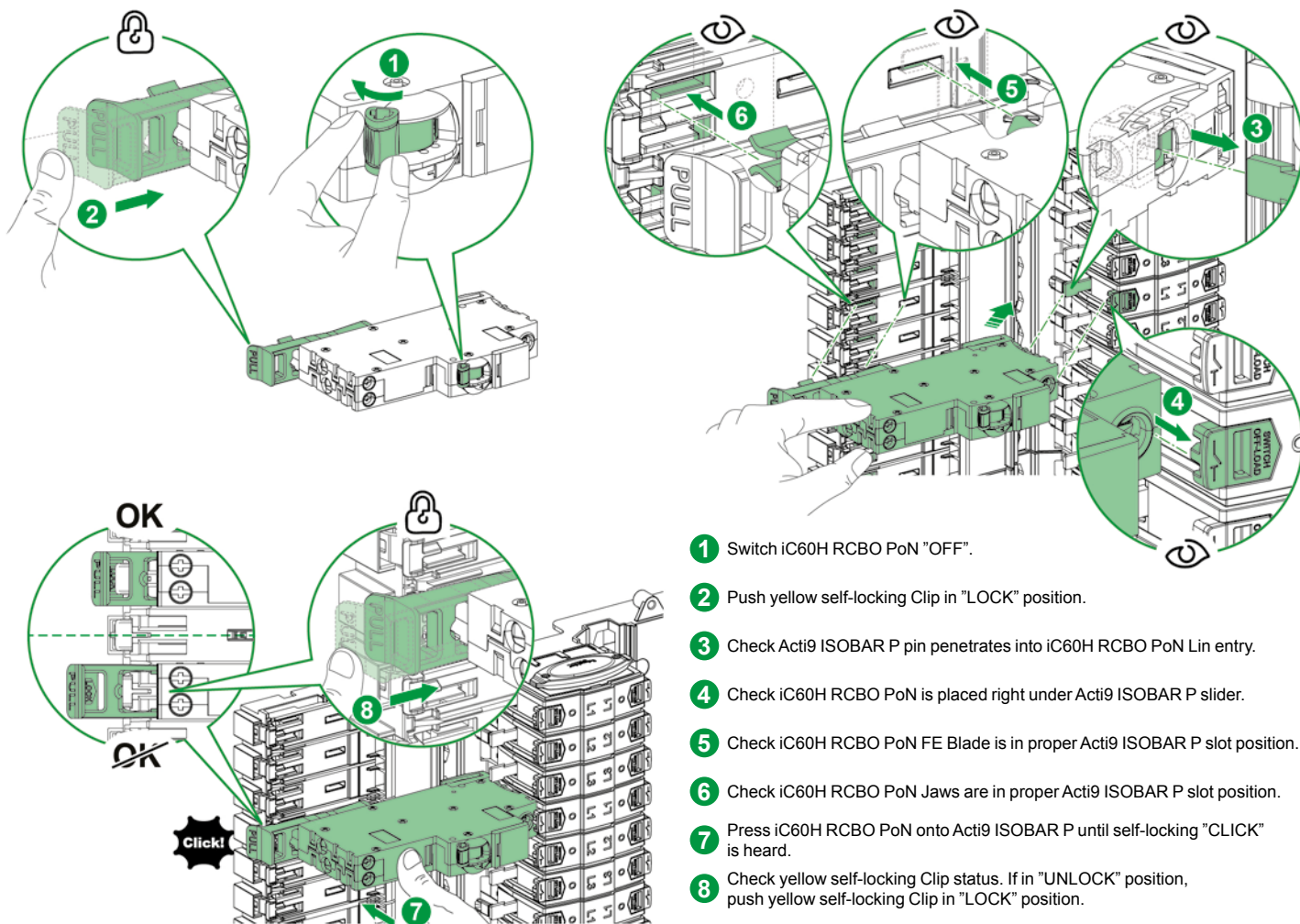
**1 Installing****⚠ ⚠ DANGER****HAZARD OF ELECTRIC SHOCK, EXPLOSION OR ARC FLASH**

- Install this product in accordance with National Wiring Regulation.
- Check compatibility with earthing system. Do not use this product on installations which require double pole switching eg. IT or TT systems.
- Do not use iC60H RCBO PoN as an incomer device.
- Do not plug iC60H RCBO PoN into former Acti9 ISOBAR.

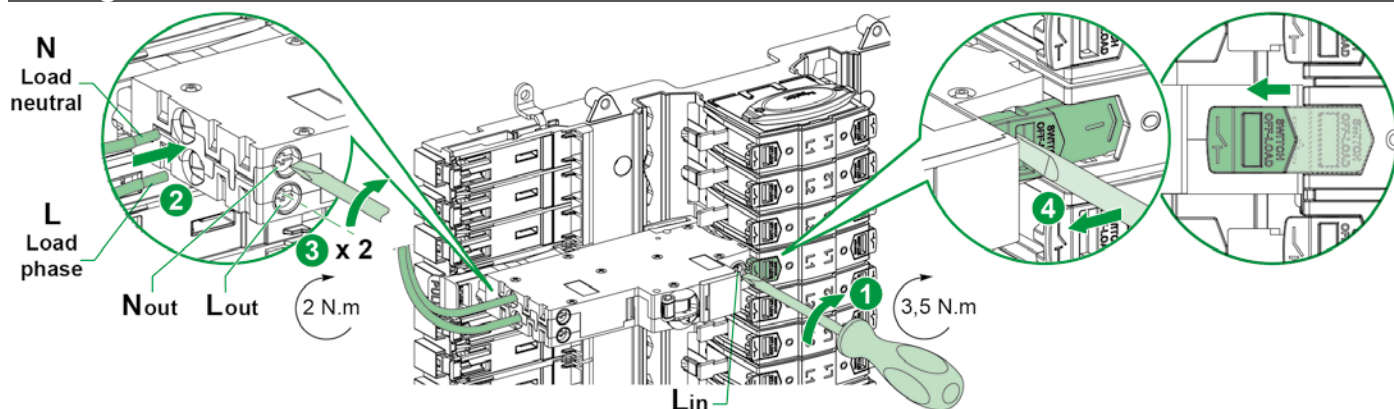
**Failure to follow these instructions will result in death or serious injury.**

All electrical equipment protected by iC60H RCBO PoN must be effectively earthed.  
Maximum permissible earthing resistance is as follows:

Device Use	Maximum Earthing Resistance
230/240 V AC	100 Ω



- 1 Switch iC60H RCBO PoN "OFF".
- 2 Push yellow self-locking Clip in "LOCK" position.
- 3 Check Acti9 ISOBAR P pin penetrates into iC60H RCBO PoN Lin entry.
- 4 Check iC60H RCBO PoN is placed right under Acti9 ISOBAR P slider.
- 5 Check iC60H RCBO PoN FE Blade is in proper Acti9 ISOBAR P slot position.
- 6 Check iC60H RCBO PoN Jaws are in proper Acti9 ISOBAR P slot position.
- 7 Press iC60H RCBO PoN onto Acti9 ISOBAR P until self-locking "CLICK" is heard.
- 8 Check yellow self-locking Clip status. If in "UNLOCK" position, push yellow self-locking Clip in "LOCK" position.

**2 Wiring**

### 3 Testing

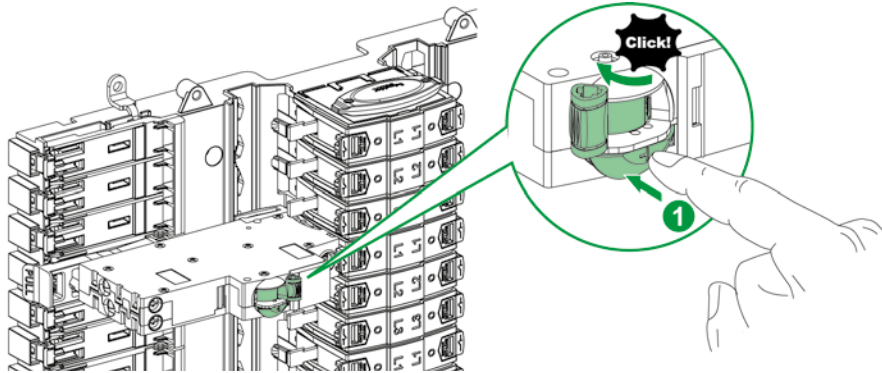
Press once button marked "T".  
 Toggle moves from "ON" to "OFF" position by itself and "Click" is heard.  
 If the devices do not switch off the supply, contact a "qualified electrician".  
 The devices must switch off the supply immediately and must then be switched on to restore the supply.  
 In the absence of any regulation, the test must be carried out once a month.  
 iC60H RCBO PoN must be disconnected before any dielectric test is carried out.

#### ⚠ ⚠ DANGER

**HAZARD OF ELECTRIC SHOCK, EXPLOSION OR ARC FLASH**  
 Test once a month each device by pressing the button marked "T".  
**Failure to follow these instructions will result in death or serious injury.**

#### NOTICE

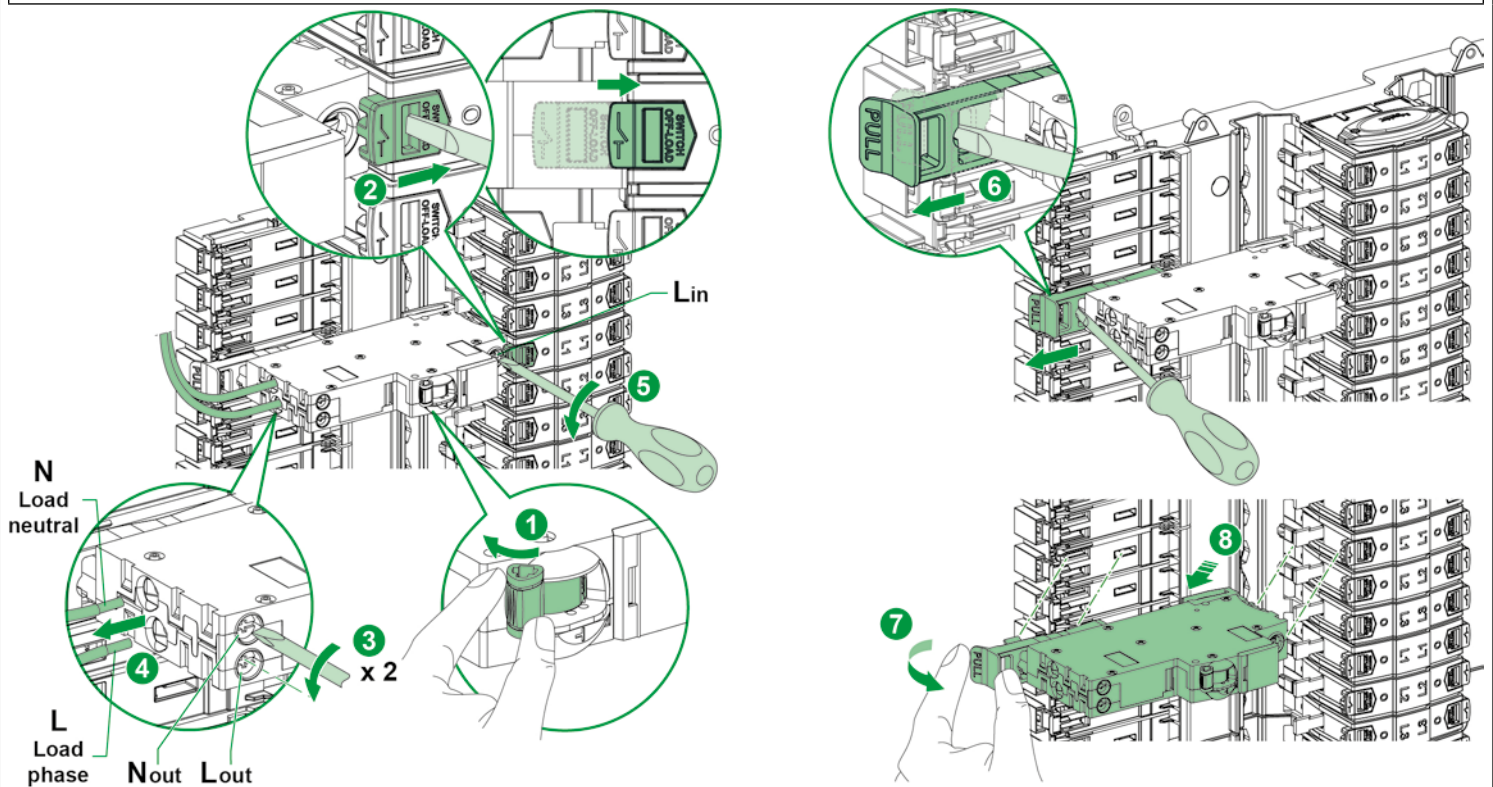
**HAZARD OF IMPROPER OPERATION**  
 Do not use Test Button to switch off iC60H RCBO PoN.  
**Failure to follow these instructions can result in equipment damage.**



### 4 Dismounting

#### NOTICE

**HAZARD OF IMPROPER OPERATION**  
 iC60H RCBO PoN self-locking Clip should be unlocked before removal.  
**Failure to follow these instructions can result in equipment damage.**



Schneider Electric Industries SAS  
 35, rue Joseph Monier  
 CS 30323  
 F - 92506 Rueil Malmaison Cedex

www.schneider-electric.com



# SCATTERGOOD & JOHNSON LTD

ELECTRICAL ENGINEERING & FLUID CONTROL DISTRIBUTORS

Est.1899

At Scattergood & Johnson Ltd, we pride ourselves on being a technical distributor to specialist industries.

Working with a range of quality product suppliers across a number of specialist markets, we are not your average 'box shifter' - we are your technical and supply chain partner.

We fully support every product we sell - for free! Our internal team and external sales engineers can answer any product or application question, no matter the complexity.

Backing up this technical ability is a range of 50,000+ products available from stock for nationwide next day delivery (same day if required!), or you can collect what you need from any of our trade counters around the UK.

Select your specialist interest below to learn more about how we can help.



Online, In Branch and On the Road - Scattergood & Johnson Ltd, there when you need us.

# [www.scatts.co.uk](http://www.scatts.co.uk)