

# LUA8E20

www.schneider-electric.com

## ⚠ DANGER / PELIGRO / DANGER



### HAZARD OF ELECTRIC SHOCK, EXPLOSION, OR ARC FLASH

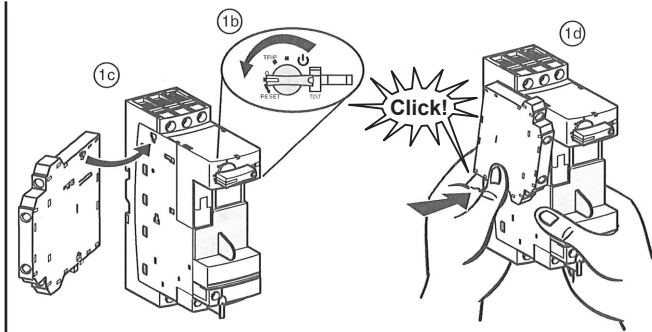
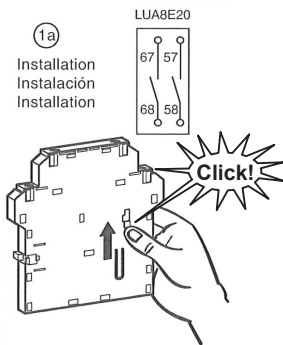
Disconnect all power before servicing equipment.  
**Failure to follow these instructions will result in death or serious injury.**

### PELIGRO DE DESCARGA ELÉCTRICA, EXPLOSIÓN O ARCO ELÉCTRICO

Desconecte todas las alimentaciones antes de manipular el producto.  
**Si no se siguen estas instrucciones provocará lesiones graves o incluso la muerte.**

### RISQUE D'ÉLECTROCUTION, D'EXPLOSION OU D'ARC ÉLECTRIQUE

Coupez toutes les alimentations avant de travailler sur cet appareil.  
**Le non-respect de ces instructions provoquera la mort ou des blessures graves.**



## ⚠ WARNING / ADVERTENCIA / AVERTISSEMENT

### UNEXPECTED CONTACT CLOSURE

- When the module is removed, the module contacts close.
- Ensure that there is no voltage on terminals 57 and 67 before removing the module.

**Failure to follow these instructions can result in death or serious injury.**

### CIERRE INESPERADO DE LOS CONTACTOS

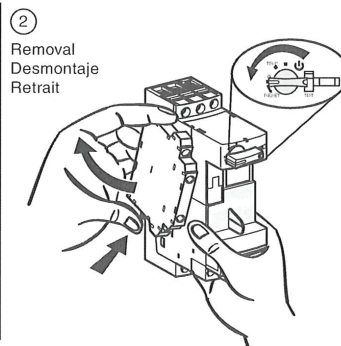
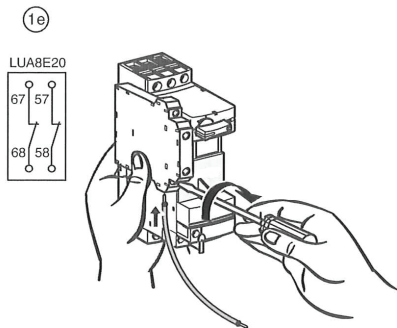
- Al retirar el módulo sus contactos se cierran.
- Asegúrese de que estén totalmente desenergizadas las terminales 57 y 67 antes de retirar el módulo.

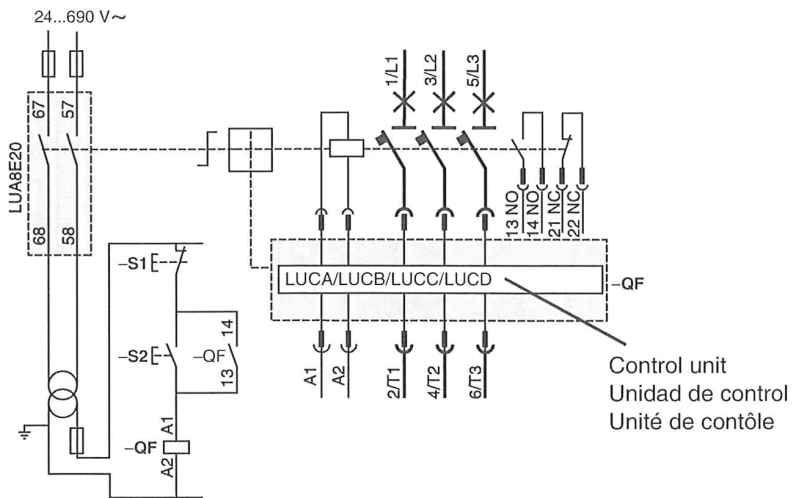
**Si no se siguen estas instrucciones pueden producirse lesiones personales graves o mortales.**

### FERMETURE INATTENDUE DE CONTACTS

- Lorsque le module est retiré, ses contacts se ferment.
- Assurez-vous qu'il n'existe aucune tension sur les bornes 57 et 67 avant de retirer le module.

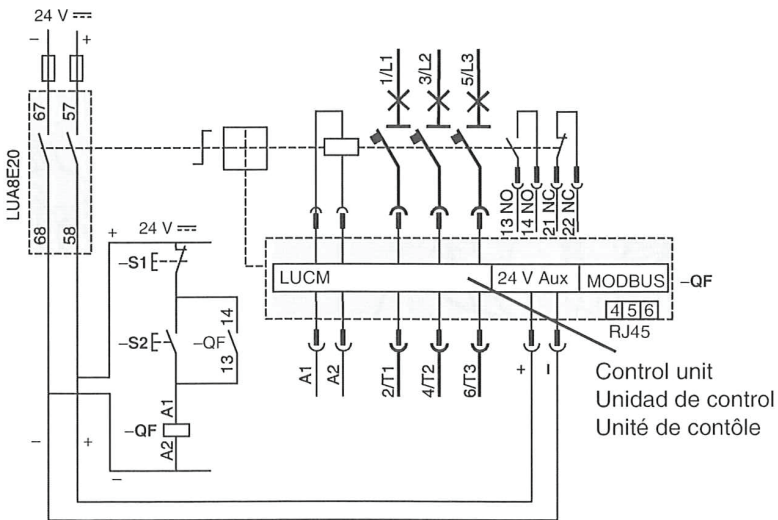
**Le non-respect de ces instructions peut provoquer la mort ou des blessures graves.**





Control unit  
Unidad de control  
Unité de contrôle

**S1** = Stop / Paro / Arrêt  
**S2** = Start / Arranque / Marche  
**QF** = Motor starter / Arrancador de motor / Démarreur de moteur



Control unit  
Unidad de control  
Unité de contrôle



# SCATTERGOOD & JOHNSON LTD

ELECTRICAL ENGINEERING & FLUID CONTROL DISTRIBUTORS

Est.1899

At Scattergood & Johnson Ltd, we pride ourselves on being a technical distributor to specialist industries.

Working with a range of quality product suppliers across a number of specialist markets, we are not your average 'box shifter' - we are your technical and supply chain partner.

We fully support every product we sell - for free! Our internal team and external sales engineers can answer any product or application question, no matter the complexity.

Backing up this technical ability is a range of 50,000+ products available from stock for nationwide next day delivery (same day if required!), or you can collect what you need from any of our trade counters around the UK.

Select your specialist interest below to learn more about how we can help.



Online, In Branch and On the Road - Scattergood & Johnson Ltd, there when you need us.

# [www.scatts.co.uk](http://www.scatts.co.uk)