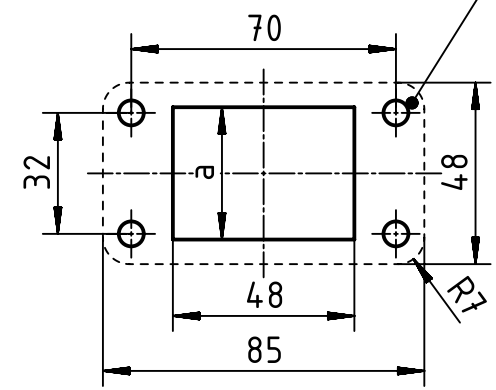
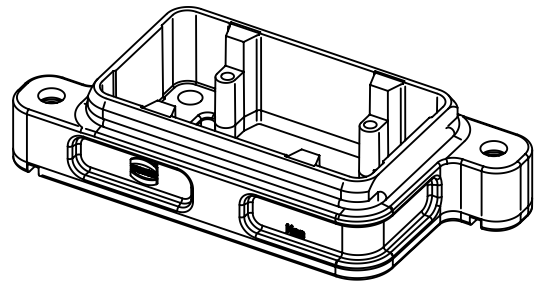


panel cut out  
(1:2)  
for EMC features,  
conductive surface



|                 |      |
|-----------------|------|
| application     | a    |
| standard insert | 35   |
| HC-Modular 650  | 44,5 |



|   |  |                                 |                           |                           |   |
|---|--|---------------------------------|---------------------------|---------------------------|---|
|   | All Dimensions in mm<br>Original Size DIN A4 |                                 | Scale<br>1:1              | Free size tol.            | Ref.  |
|   | All rights reserved<br>Department EL PD      |                                 | Created by<br>RULLKOETTER | Inspected by<br>SCHNIEDER | Standardisation<br>RUETERA                                |
| HARTING Electric GmbH & Co. KG<br>D-32339 Espelkamp |  | Title<br><b>Han 6HPR-agg-SV</b> |                           |                           | Date<br>2020-06-05  |
|   |  | Type<br>TB                      | Number<br>09 40 006 0311  |                           | State<br>Final Release                                    |
|   |  |                                 |                           |                           | Doc-Key / ECM-Nr.<br>100209962/UGD/004/D<br>500000174.123 |
|   |  |                                 |                           |                           | Rev. <b>D</b>   |
|   |  |                                 |                           |                           | Page<br>1/1   |