



Pushing Performance

## Han-Eco Mod.14E-SMC-FI-SCT

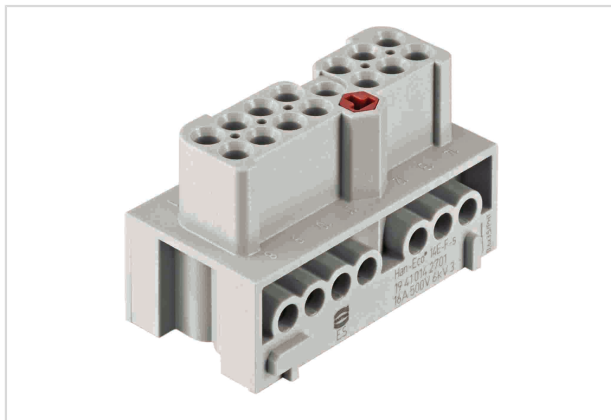


Image is for illustration purposes only. Please refer to product description.

Part number	19 41 014 2701
Specification	Han-Eco Mod.14E-SMC-FI-SCT
HARTING eCatalogue	<a href="https://b2b.harting.com/19410142701">https://b2b.harting.com/19410142701</a>

### Identification

Category	Inserts
Series	Han-Eco®

### Version

Termination method	Screw termination
Gender	Female
Size	10 B
With wire protection	Yes
Number of contacts	14
PE contact	Yes

### Technical characteristics

Conductor cross-section	0.75 ... 2.5 mm <sup>2</sup>
Rated current	16 A
Rated voltage	500 V
Rated impulse voltage	6 kV
Pollution degree	3
Rated voltage acc. to UL	600 V
Rated voltage acc. to CSA	600 V
Insulation resistance	>10 <sup>10</sup> Ω
Limiting temperature	-40 ... +125 °C
Tightening torque	0.5 Nm

Page 1 / 2 | Creation date 2020-02-18 | Please note that the data specified here were taken as extracts from the online catalogue. Please refer to the user documentation for the complete and up-to-date information and data. Please also note that the user is responsible for validating functionality, conformity with applicable laws and directives, as well as for the electrical safety in the particular application.

HARTING Electric GmbH & Co. KG | Wilhelm-Harting-Straße 1 | 32339 Espelkamp | Germany  
Phone +49 5772 47-97100 | [electric@HARTING.com](mailto:electric@HARTING.com) | [www.HARTING.com](http://www.HARTING.com)



Pushing Performance

## Technical characteristics

Mating cycles	≥500
---------------	------

## Material properties

Material (insert)	Polycarbonate (PC)
Colour (insert)	RAL 7032 (pebble grey)
Material (contacts)	Copper alloy
Surface (contacts)	Silver plated
Material flammability class acc. to UL 94	V-0
RoHS	compliant with exemption
RoHS exemptions	6(c): Copper alloy containing up to 4 % lead by weight
ELV status	compliant with exemption
China RoHS	50
REACH Annex XVII substances	No
REACH ANNEX XIV substances	No
REACH SVHC substances	Yes
REACH SVHC substances	Lead

## Commercial data

Packaging size	1
Net weight	63.8 g
Country of origin	Romania
European customs tariff number	85366990
eCl@ss	27440205 Contact insert for industrial connectors



# SCATTERGOOD & JOHNSON LTD

ELECTRICAL ENGINEERING & FLUID CONTROL DISTRIBUTORS

Est.1899

At Scattergood & Johnson Ltd, we pride ourselves on being a technical distributor to specialist industries.

Working with a range of quality product suppliers across a number of specialist markets, we are not your average 'box shifter' - we are your technical and supply chain partner.

We fully support every product we sell - for free! Our internal team and external sales engineers can answer any product or application question, no matter the complexity.

Backing up this technical ability is a range of 50,000+ products available from stock for nationwide next day delivery (same day if required!), or you can collect what you need from any of our trade counters around the UK.

Select your specialist interest below to learn more about how we can help.



Online, In Branch and On the Road - Scattergood & Johnson Ltd, there when you need us.

# [www.scatts.co.uk](http://www.scatts.co.uk)