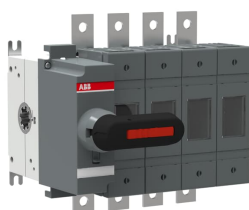




 PRODUCT-DETAILS

OS160GB04N1P

OS160GB04N1P SWITCH FUSE



General Information

Extended Product Type	OS160GB04N1P
Product ID	1SCA115896R1001
EAN	6417019481654
Catalog Description	OS160GB04N1P SWITCH FUSE
Long Description	Switch Fuses,Front Operated,4-pole,04 (Left Side),British Standard,A2-A4,Handle and shaft included,Switched - With Solid Link

Popular Downloads

Data Sheet, Technical Information	1SCC311137D0201
Instructions and Manuals	1SCC110037M0206

Dimensions

Product Net Width	182 mm
Product Net Height	140 mm
Product Net Depth / Length	115 mm
Product Net Weight	2.61 kg 5.75 lb

Technical

Rated Operational Current AC-21A (I_e)	(500 V) 160 A (690 V) 160 A
Rated Operational Current AC-22A (I_e)	(500 V) 160 A (690 V) 160 A
Rated Operational Current AC-23A (I_e)	(500 V) 160 A (690 V) 160 A
Rated Operational Power AC-23A (P_e)	(220 ... 240 V) 45 kW (400 V) 75 kW (415 V) 75 kW (500 V) 90 kW (690 V) 132 kW
Conventional Free-air Thermal Current (I_{th})	q = 40 °C 160 A
Conventional Thermal Current (I_{the})	Fully Enclosed 160 A
Rated Impulse Withstand Voltage (U_{imp})	8 kV
Rated Insulation Voltage (U_i)	1000 V
Rated Operational Voltage	500 V
Rated Short-time Withstand Current (I_{cw})	for 1 s 5 kiloampere rms
Rated Conditional Short-Circuit Current (I_{nc})	(690 V) 80 kA
Power Loss	at Rated Operating Conditions per Pole 12 W
Pollution Degree	3
Handle Type	Handle and shaft included
Fourth Pole Position	Left Side
Fourth Pole Type	Switched - With Solid Link
Switches Operating Mechanism	04 (Left Side)
Position of Line Terminals	Top In - Bottom Out Bottom In - Top Out
Fuse Size	A2-A4
Fuse System	British Standard
Operating Mode	Front Operated
Standards	IEC 60947-3
Mounting Type	Base mounting
Number of Poles	4
Terminal Type	Lug terminals
Terminal Width	20 mm
Tightening Torque	15 ... 22 N·m

Certificates and Declarations (Document Number)

CCC Certificate	CCC OS100-160G_2015.pdf
Declaration of Conformity - CE	1SCC311137D2703
DNV GL Certificate	1SCC311125D0203
EAC Certificate	EAC OT_OTDC_OTL_OTP_OTR_OTU_OTE_OETL_OESA_OESC_OTM_OS_OSM_.pdf
Instructions and Manuals	1SCC110037M0206
RoHS Information	1SCC311108D0203

Container Information

OS160GB04N1P

3

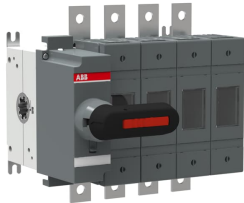
Package Level 1 Units	1 piece
Package Level 1 Width	260 mm 10.2 in
Package Level 1 Depth / Length	290 mm 11.4 in
Package Level 1 Height	190 mm 7.5 in
Package Level 1 Gross Weight	2.9 kg 6.4 lb
Package Level 1 EAN	6417019481654

Classifications

Object Classification Code	Q
ETIM 4	EC001040 - Fuse switch disconnecter
ETIM 5	EC001040 - Fuse switch disconnecter
ETIM 6	EC001040 - Fuse switch disconnecter
ETIM 7	EC001040 - Fuse switch disconnecter
WEEE Category	5. Small Equipment (No External Dimension More Than 50 cm)

Categories

Low Voltage Products and Systems → Switches → Switch Fuses





SCATTERGOOD & JOHNSON LTD

ELECTRICAL ENGINEERING & FLUID CONTROL DISTRIBUTORS

Est.1899

At Scattergood & Johnson Ltd, we pride ourselves on being a technical distributor to specialist industries.

Working with a range of quality product suppliers across a number of specialist markets, we are not your average 'box shifter' - we are your technical and supply chain partner.

We fully support every product we sell - for free! Our internal team and external sales engineers can answer any product or application question, no matter the complexity.

Backing up this technical ability is a range of 50,000+ products available from stock for nationwide next day delivery (same day if required!), or you can collect what you need from any of our trade counters around the UK.

Select your specialist interest below to learn more about how we can help.



Online, In Branch and On the Road - Scattergood & Johnson Ltd, there when you need us.

www.scatts.co.uk