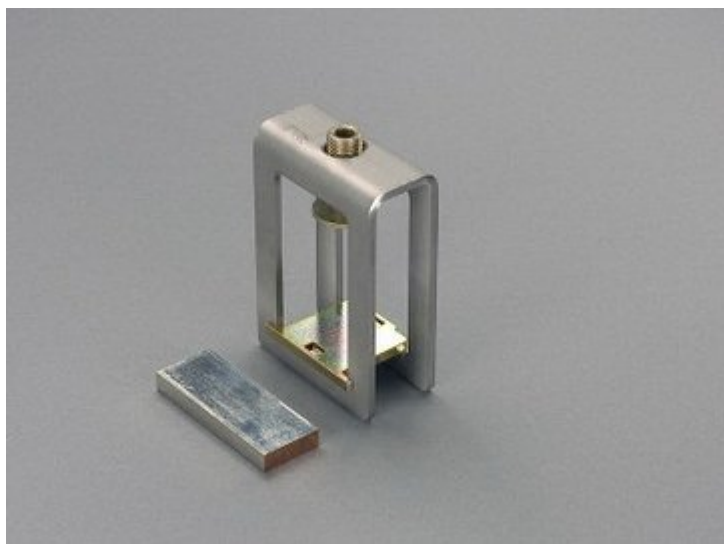


profile terminal (01936)



The picture may show a similar product.

Description

Part No.: 01936

CRITO[®]

profile terminal

500 - 1000 mm²

terminal space 51 x 20-42

for busbars double-T section

System

60Classic

185mm-System

centre feed unit

Product group 07

Subgroup 30

pack size 3

EAN 4021267019365

Advantages of the product

also rigid copper busbars can be connected if they are installed without mechanical tension

catalog page 2020 : 3.8, 5.1

eCl@ss 6.1 27141146

eCl@ss 7.1 27141146

ETIM 4.0 EC000001

ETIM 5.0 EC000001

Approvals

Standards

IEC 61439-1:2011

GB/T 7251.1

Approvals

CSA, UL, DNV GL, EAC



type number: H51.2

EAC Type: TE-P

UL file: E123577, UL category (for USA): NMTR2 <http://www.ul.com>

UL file: E123577, UL category (for Canada): NMTR8 <http://www.ul.com>

CSA file: 110285, CSA class: 3211-37 <http://directories.csa-international.org>

CCC approval: no certification required

Technical data

Details IEC

Standards

IEC 61439-1:2011

GB/T 7251.1

Electrical data IEC

Rated current (IEC): 1600 A

rated voltage (IEC) AC: 690 V

The insulation performance of the article depends on the installation conditions.

Supplementary data IEC

The following values have been verified with tests under certain conditions. Please ask Wöhner for this conditions before designing your panel.

max. permitted voltage (IEC) AC: 1000 V

max. permitted voltage (IEC) DC: 1500 V

current carrying capacity for end feed: 1600 A

current carrying capacity for centre feed: 2000 A

rated peak withstand current I_{pk} max.: 81.9 kA

Details UL

Standards

UL 508

Electrical data UL

rated current (UL): 1200 A

rated voltage (UL) AC: 600 V

SCCR: 25 kA

Mechanical data

W x H x D: 82 x 45 x 118

weight: 73.5 kg/100

for busbars: double-T section

In order to comply with the required air section as per UL508a, a suitable shrouding must be used.

Terminal points

terminal space 51 x 20-42

1 terminal screw M12

Material properties

Connecting screws: Set screw M16, Allan key size 8

Stainless steel terminal body

Reference

3 terminals are needed for a 3-pole connection. Insert separators when connecting laminated copper busbars in parallel.

Accessories



01539

cover cap, 3-pole

180 mm wide

180 x 200 x 90

for busbars: 12, 15, 20, 25, 30 x 5, 10 and section busbars



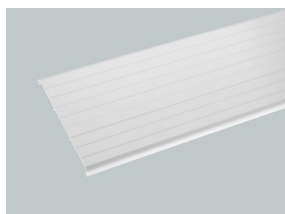
01540

cover cap, 3-pole

250 mm wide

250 x 200 x 90

for busbars: 12, 15, 20, 25, 30 x 5, 10 and section busbars

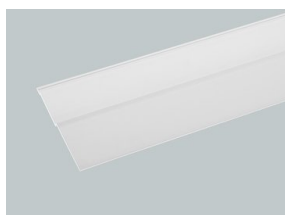


01554

compartment section, for 3-pole systems

front mounted, 1.10 m long, for holder 01136

3 x 190 x 1100



01555

cover section

top / bottom, 1.10 m long, for holders 01136 or 01137

3 x 109 x 1100



01136

set of holders for cover sections, for 3-pole busbar systems

set consisting of left and right holder, for covers 01554, 01555 and 01417

for busbars: 12, 15, 20, 25, 30 x 5, 10 and section busbars



01417

cover section

top / bottom, slotted, 1.10 m long, for holders 01136 or 01137

3 x 118 x 1100



SCATTERGOOD & JOHNSON LTD

ELECTRICAL ENGINEERING & FLUID CONTROL DISTRIBUTORS

Est.1899

At Scattergood & Johnson Ltd, we pride ourselves on being a technical distributor to specialist industries.

Working with a range of quality product suppliers across a number of specialist markets, we are not your average 'box shifter' - we are your technical and supply chain partner.

We fully support every product we sell - for free! Our internal team and external sales engineers can answer any product or application question, no matter the complexity.

Backing up this technical ability is a range of 50,000+ products available from stock for nationwide next day delivery (same day if required!), or you can collect what you need from any of our trade counters around the UK.

Select your specialist interest below to learn more about how we can help.



Online, In Branch and On the Road - Scattergood & Johnson Ltd, there when you need us.

www.scatts.co.uk