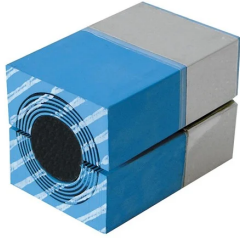




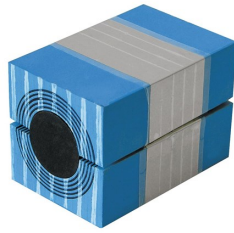
# Roxtec RM ES module with Multidiameter™

Roxtec RM modules are 60 mm (2.362") deep and easy to adapt to cable and pipes of different sizes. The ES version protects against high frequency radiated and conducted EMI/EMP in shielded environments.

- To be used with corresponding Roxtec components to form a complete sealing solution



RM 40 ES B



RM 40 ES

## RM ES B, with core

Product	Number of cables/pipes	For cable/pipe Ø (mm)	External dimensions WxHxD (mm)	Weight (kg)	Art. No
RM 15 ES B	1	3 - 11	15 x 15 x 60	0.02	ERM1100151181
RM 15w40 ES B	3	3.5 - 10.5	40 x 15 x 60	0.05	ERM1115401181
RM 30H90 ES B	1	10 - 25	30 x 90 x 60	0.24	165305
RM 20 ES B	1	4 - 14.5	20 x 20 x 60	0.04	ERM1100201181
RM 20w40 ES B	2	3.5 - 16.5	40 x 20 x 60	0.07	ERM1120401181
RM 30 ES B	1	10 - 25	30 x 30 x 60	0.08	ERM1100301181
RM 40 10-32 ES B	1	9.5 - 32.5	40 x 40 x 60	0.15	ERM1140101181
RM 40 ES B	1	21.5 - 34.5	40 x 40 x 60	0.14	ERM1100401181
RM 40H80 ES B	1	21.5 - 34.5	40 x 80 x 60	0.28	173584
RM 60 24-54 ES B	1	24 - 54	60 x 60 x 60	0.33	ERM1160201181
RM 60 ES B	1	28 - 54	60 x 60 x 60	0.3	ERM1100601181
RM 80 ES B	1	48 - 71	80 x 80 x 60	0.6	110098
RM 90 ES B	1	48 - 71	90 x 90 x 60	0.8	ERM1100901181
RM 120 ES B	1	67.5 - 99	120 x 120 x 60	1.3	ERM1101201181

## RM ES B, without core

Product	Number of cables/pipes	For cable/pipe Ø (mm)	External dimensions WxHxD (mm)	Weight (kg)	Art. No
RM 60 ES B WOC	1	28 - 54	60 x 60 x 60	0.26	ERM1000601181
RM 80 ES B WOC	1	48 - 71	80 x 80 x 60	0.42	110100
RM 90 ES B WOC	1	48 - 71	90 x 90 x 60	0.6	ERM1000901181
RM 120 ES B WOC	1	67.5 - 99	120 x 120 x 60	0.9	ERM1001201181

**RM ES, with core**

Product	Number of cables/pipes	For cable/pipe Ø (mm)	External dimensions WxHxD (mm)	Weight (kg)	Art. No
RM 15 ES	1	3 - 11	15 x 15 x 60	0.01	ERM0100151181
RM 15w40 ES	3	3.5 - 10.5	40 x 15 x 60	0.05	ERM0115401181
RM 30H90 ES	1	10 - 25	30 x 90 x 60	0.24	165306
RM 20 ES	1	4 - 14.5	20 x 20 x 60	0.04	ERM0100201181
RM 20w40 ES	2	3.5 - 16.5	40 x 20 x 60	0.04	ERM0120401181
RM 30 ES	1	10 - 25	30 x 30 x 60	0.1	ERM0100301181
RM 40 10-32 ES	1	9.5 - 32.5	40 x 40 x 60	0.07	ERM0140101181
RM 40 ES	1	21.5 - 34.5	40 x 40 x 60	0.15	ERM0100401181
RM 40H80 ES	1	21.5 - 34.5	40 x 80 x 60	0.28	173582
RM 60 24-54 ES	1	24 - 54	60 x 60 x 60	0.33	ERM0160201181
RM 60 ES	1	28 - 54	60 x 60 x 60	0.35	ERM0100601181
RM 80 ES	1	48 - 71	80 x 80 x 60	0.6	110095
RM 90 ES	1	48 - 71	90 x 90 x 60	0.39	ERM0100901181
RM 120 ES	1	67.5 - 99	120 x 120 x 60	0.6	ERM0101201181

**RM ES, without core**

Product	Number of cables/pipes	For cable/pipe Ø (mm)	External dimensions WxHxD (mm)	Weight (kg)	Art. No
RM 60 ES WOC	1	28 - 54	60 x 60 x 60	0.26	ERM0000601181
RM 80 ES WOC	1	48 - 71	80 x 80 x 60	0.47	110097
RM 90 ES WOC	1	48 - 71	90 x 90 x 60	0.39	ERM0000901181
RM 120 ES WOC	1	67.5 - 99	120 x 120 x 60	0.6	ERM0001201181



# SCATTERGOOD & JOHNSON LTD

ELECTRICAL ENGINEERING & FLUID CONTROL DISTRIBUTORS

Est.1899

At Scattergood & Johnson Ltd, we pride ourselves on being a technical distributor to specialist industries.

Working with a range of quality product suppliers across a number of specialist markets, we are not your average 'box shifter' - we are your technical and supply chain partner.

We fully support every product we sell - for free! Our internal team and external sales engineers can answer any product or application question, no matter the complexity.

Backing up this technical ability is a range of 50,000+ products available from stock for nationwide next day delivery (same day if required!), or you can collect what you need from any of our trade counters around the UK.

Select your specialist interest below to learn more about how we can help.



Online, In Branch and On the Road - Scattergood & Johnson Ltd, there when you need us.

# [www.scatts.co.uk](http://www.scatts.co.uk)