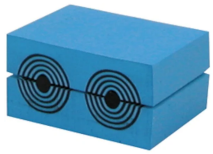




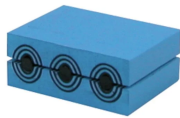
Roxtec CM module with Multidiameter™

Roxtec CM modules are 30 or 40 mm (1.181"/1.575") deep and easily adapted to cables and pipes of different sizes. When used with a solid core, the module functions as a spare module for future capacity.

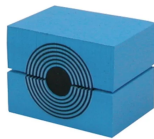
- To be used with corresponding Roxtec components to form a complete sealing solution
- For cables and pipes 3.5-34.5 mm (0.138"-1.358") OD



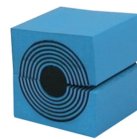
CM 20w40



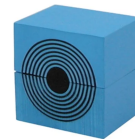
CM 15w40



CM 30w40



CM 30



CM 40 10-32



CM 40

With core

Product	Number of cables/pipes	For cable/pipe Ø (mm)	External dimensions WxHxD (mm)	Weight (kg)	Art. No
CM 15w40	3	3.5 - 10.5	40 x 15 x 30	0.03	C000115401000
CM 20	1	4 - 14.5	20 x 20 x 30	0.02	C000100201000
CM 20w40	2	3.5 - 16.5	40 x 20 x 30	0.04	C000120401000
CM 30	1	10 - 25	30 x 30 x 30	0.04	C000100301000
CM 30w40	1	10 - 25	40 x 30 x 30	0.05	C000130401000
CM 40	1	21.5 - 34.5	40 x 40 x 30	0.07	5CM0000008983
CM 40 10-32	1	9.5 - 32.5	40 x 40 x 30	0.07	C000140101000



SCATTERGOOD & JOHNSON LTD

ELECTRICAL ENGINEERING & FLUID CONTROL DISTRIBUTORS

Est.1899

At Scattergood & Johnson Ltd, we pride ourselves on being a technical distributor to specialist industries.

Working with a range of quality product suppliers across a number of specialist markets, we are not your average 'box shifter' - we are your technical and supply chain partner.

We fully support every product we sell - for free! Our internal team and external sales engineers can answer any product or application question, no matter the complexity.

Backing up this technical ability is a range of 50,000+ products available from stock for nationwide next day delivery (same day if required!), or you can collect what you need from any of our trade counters around the UK.

Select your specialist interest below to learn more about how we can help.



Online, In Branch and On the Road - Scattergood & Johnson Ltd, there when you need us.

www.scatts.co.uk