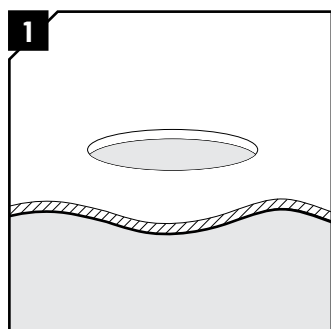


Installation instructions Roxtec C RS T

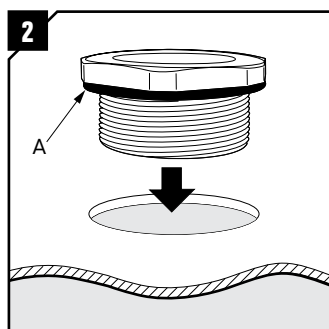
Product data

Type	Torque sleeve nut (Nm)	Spanner size (mm)	Aperture Ø (mm)	Cable/pipe range (mm)
C RS T 25	20 Nm	36	33	0+3.6-12.0
C RS T 31	25 Nm	46	41	0+4.0-17.0
C RS T 43	30 Nm	60	52	0+4.0-23.0
C RS T 50	35 Nm	70	64	0+8.0-30.0

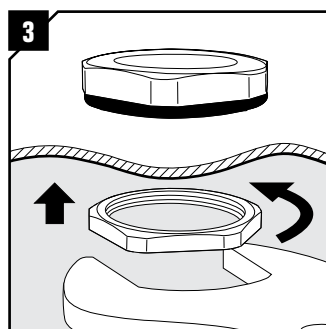
Installation



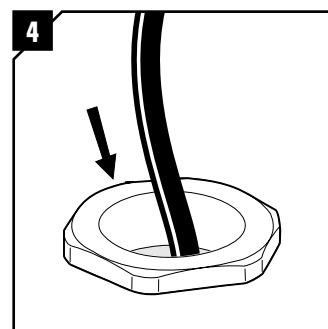
1 Make an aperture for the sleeve according to the table above.



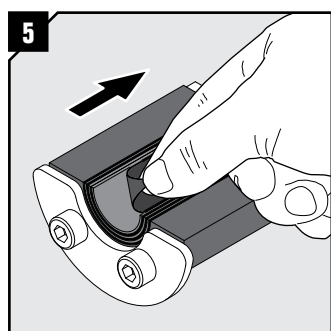
2 Make sure the rubber gasket (A) is in place.



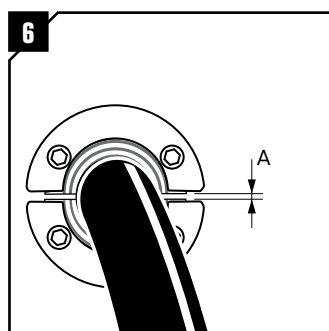
3 Fit the large sleeve nut from inside, tighten and fasten it to the specified torque according to the table above.



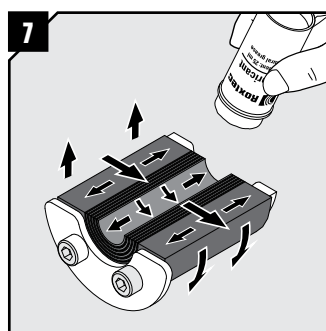
4 Insert the cable/pipe through the sleeve.



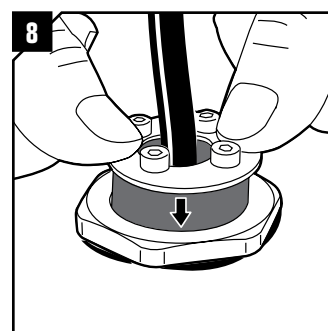
5 Adapt the seal to the cable/pipe by peeling off layers from the halves until you reach the gap seen in step 6. The halves may not differ by more than one layer.



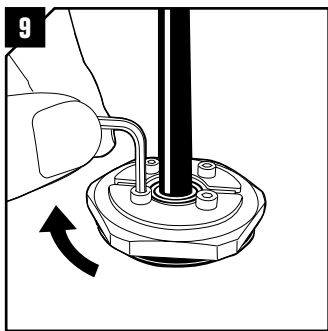
6 Achieve a 0.1-1.0 mm (A) gap between the two halves when held against the cable/pipe.



7 Lubricate thoroughly on the inside surfaces and sparsely on the outside of the seal with Roxtec Lubricant.



8 Place the seal around the cable and insert it into the sleeve.



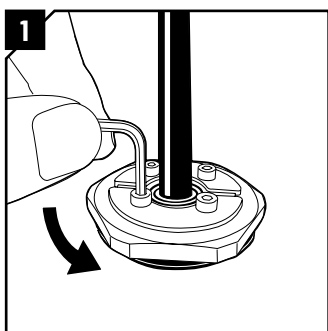
Tightening torque and tool size

Type	Rec. torque * (Nm)	Allen key size (mm)
C RS T 25	1 Nm	2.5
C RS T 31	1 Nm	2.5
C RS T 43	4 Nm	4
C RS T 50	4 Nm	4

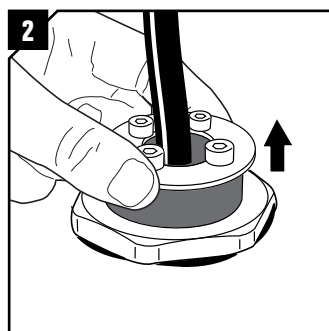
* The recommended torque depends on several things e.g. pipe size, amount of used lubricant, sleeve size or material in the pipe, etc.

Tighten the screws crosswise to the specified torque according to the table. The seal will compress and seal the transit.

Disassembly



Untighten the screws crosswise to release the compression.



Remove the seal from the sleeve.

Note

- For optimum reliability, wait 24 hours or longer after installation before exposing the cables/pipes to strain or pressure.
- Cables/pipes shall go straight through the seal.

DISCLAIMER

"The Roxtec cable entry sealing system ("the Roxtec system") is a modular-based system of sealing products consisting of different components. Each and every one of the components is necessary for the best performance of the Roxtec system. The Roxtec system has been certified to resist a number of different hazards. Any such certification, and the ability of the Roxtec system to resist such hazards, is dependent on all components that are installed as a part of the Roxtec system. Thus, the certification is not valid and does not apply unless all components installed as part of the Roxtec system are manufactured by or under license from Roxtec ("authorized manufacturer"). Roxtec gives no performance guarantee with respect to the Roxtec system, unless (I) all components installed as part of the Roxtec system are manufactured by an authorized manufacturer and (II) the purchaser is in compliance with (a), and (b), below.

- (a) During storage, the Roxtec system or part thereof, shall be kept indoors in its original packaging at room temperature.
- (b) Installation shall be carried out in accordance with Roxtec installation instructions in effect from time to time.

The product information provided by Roxtec does not release the purchaser of the Roxtec system, or part thereof, from the obligation to independently determine the suitability of the products for the intended process, installation and/or use.

Roxtec gives no guarantee for the Roxtec system or any part thereof and assumes no liability for any loss or damage whatsoever, whether direct, indirect, consequential, loss of profit or otherwise, occurred or caused by the Roxtec systems or installations containing components not manufactured by an authorized manufacturer and/or occurred or caused by the use of the Roxtec system in a manner or for an application other than for which the Roxtec system was designed or intended.

Roxtec expressly excludes any implied warranties of merchantability and fitness for a particular purpose and all other express or implied representations and warranties provided by statute or common law. User determines suitability of the Roxtec system for intended use and assumes all risk and liability in connection therewith. In no event shall Roxtec be liable for indirect, consequential, punitive, special, exemplary or incidental damages or losses.*



Roxtec International AB
 Box 540, 371 23 Karlskrona, SWEDEN
 PHONE +46 455 36 67 00, FAX +46 455 820 12
 EMAIL info@roxtec.com, www.roxtec.com



SCATTERGOOD & JOHNSON LTD

ELECTRICAL ENGINEERING & FLUID CONTROL DISTRIBUTORS

Est.1899

At Scattergood & Johnson Ltd, we pride ourselves on being a technical distributor to specialist industries.

Working with a range of quality product suppliers across a number of specialist markets, we are not your average 'box shifter' - we are your technical and supply chain partner.

We fully support every product we sell - for free! Our internal team and external sales engineers can answer any product or application question, no matter the complexity.

Backing up this technical ability is a range of 50,000+ products available from stock for nationwide next day delivery (same day if required!), or you can collect what you need from any of our trade counters around the UK.

Select your specialist interest below to learn more about how we can help.



Online, In Branch and On the Road - Scattergood & Johnson Ltd, there when you need us.

www.scatts.co.uk