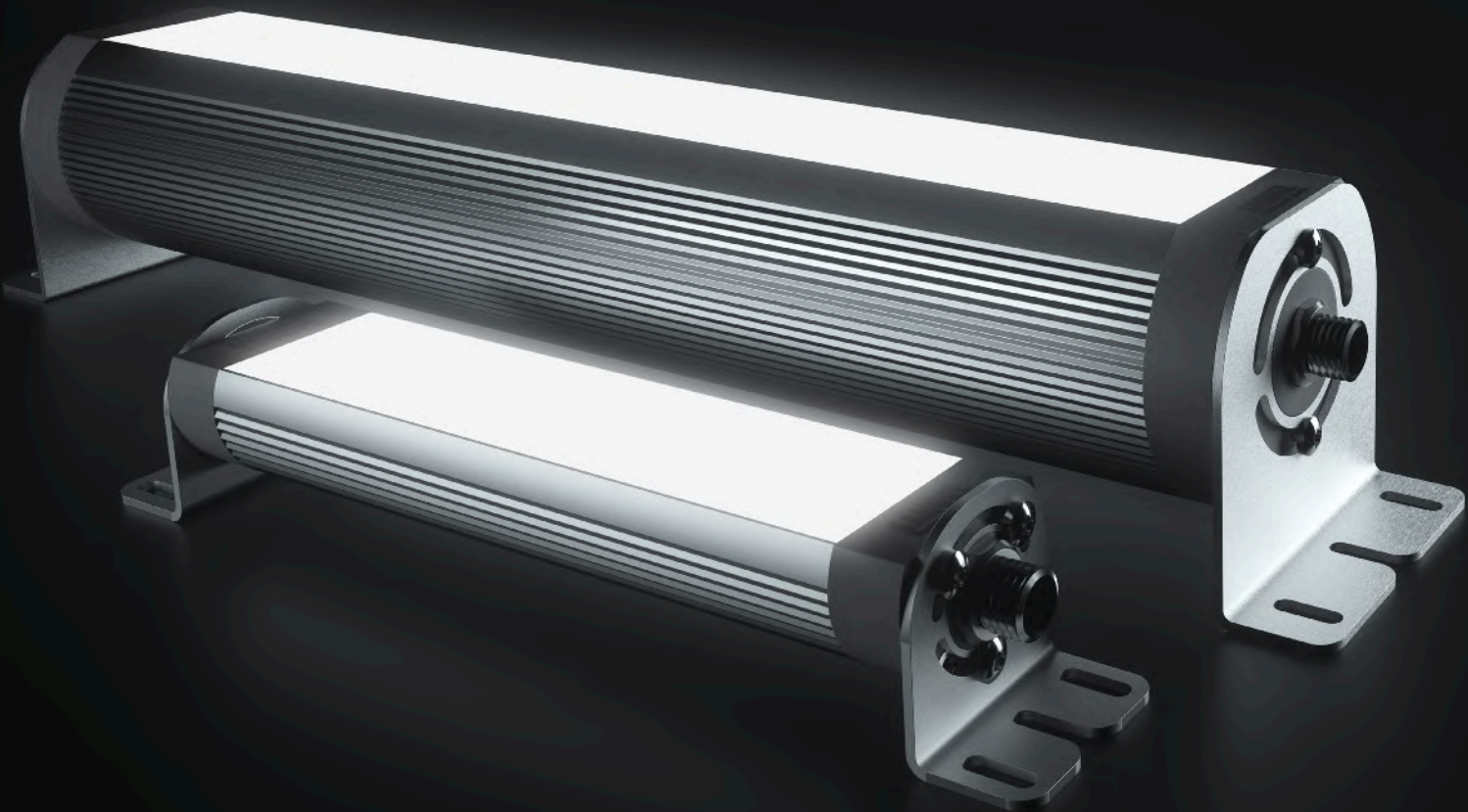


**Our NEW  
Models**

# Industrie- und Maschinenleuchten Industrial and machine luminaires

Made in Germany



**SANGEL**<sup>®</sup>  
Systemtechnik

**Liebe Leser,**

mit unserem Katalog „Maschinen- und Industrielleuchten, Made in Germany“ präsentieren wir Ihnen ein umfangreiches Spektrum an Leuchten, basierend auf dem neuesten Stand der LED-Technologie. Die sorgfältige Entwicklung und Herstellung vereint Effizienz und Wirtschaftlichkeit mit einem robusten Aufbau für den Einsatz im Maschinen- und Anlagenbau. Neben der Funktionalität legen wir besonderen Wert auf hohe Qualität, verbunden mit einem ansprechenden Design.

Acht Produktgruppen, variierend mit diversen Lichtabdeckungen von Einscheibensicherheitsglas bis zu diffusem Plexiglas, verschiedenen Lichtfarben und Optiken, lösen Ihre Beleuchtungsherausforderungen. Auf den folgenden Seiten finden Sie alles Wissenswerte zu unseren Leuchten, von Abmessungen über Leistung und Lichtstrom bis hin zu den Lichtverteilungskurven.

Gerne unterstützen wir Sie bei der richtigen Auswahl.

Sie haben weitere Anforderungen – wir helfen Ihnen, diese zu realisieren.

**Dear Readers,**

In our catalogue „Machine and industrial luminaires, Made in Germany“, we introduce you to our extensive range of luminaires featuring state-of-the art LED technology. During the meticulous development and manufacturing process, efficiency and cost-effectiveness are combined with a robust design suitable for use in machinery and plant construction. Alongside our focus on functionality, ensuring that our products are of premium quality with an appealing design is our top priority.

We address your lighting needs with our six product groups that vary in their Color temperatures, optics and light covers which range from single-pane safety glass to diffuse Perspex. By referring to the corresponding data sheets, you will be able to find out all you need to know about our luminaires, including their dimensions, Power, luminous flux and light distribution curves.

We are always on hand if you need any assistance in selecting the perfect solution to suit your needs.

We understand that you have further requirements and we are here to help you meet them.



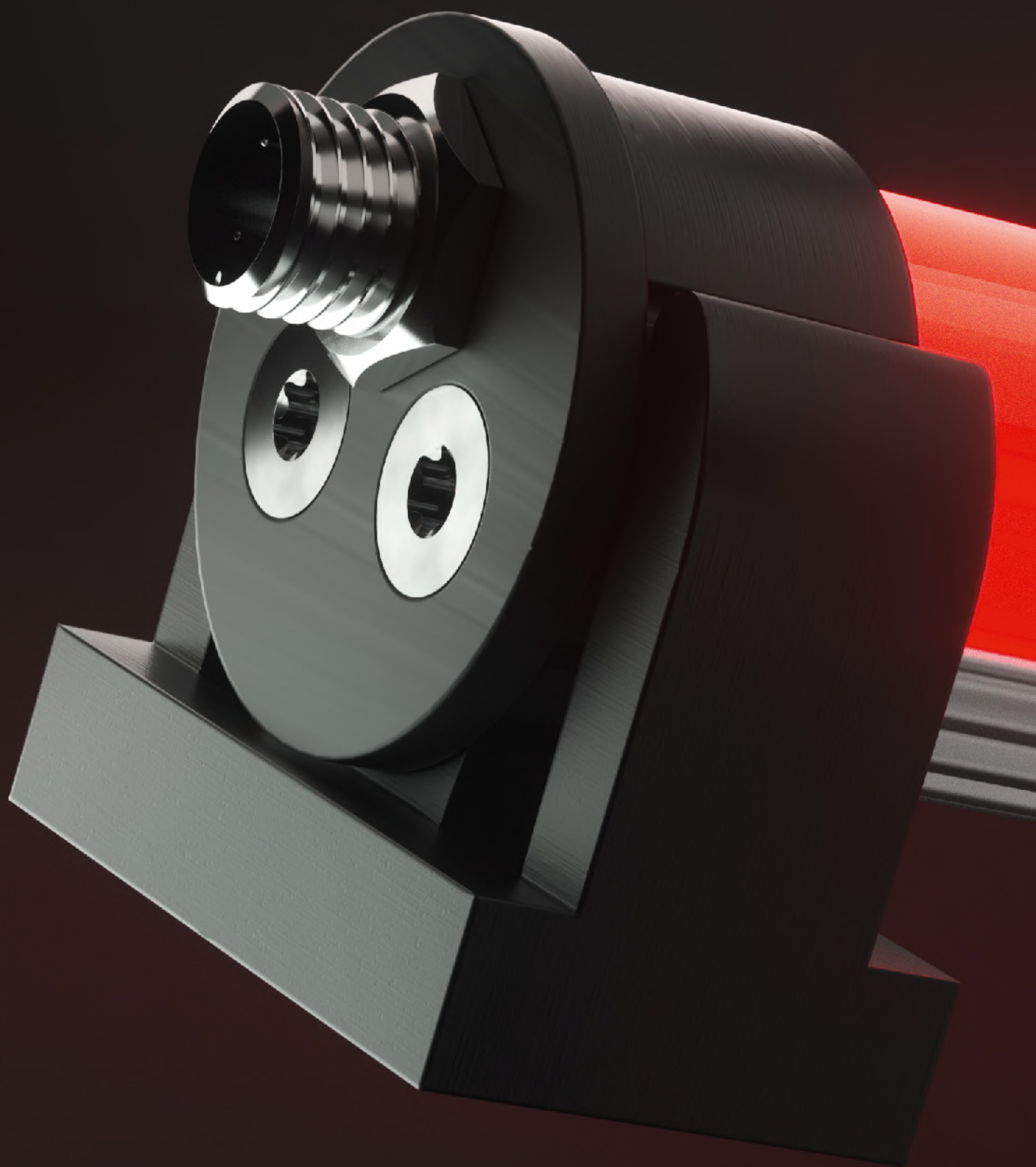
Maschinenbau



Medizintechnik

Erneuerbare  
EnergienMobile  
Automation

# LED Aufbauleuchte ELN-RGBW LED surface mounted luminaire ELN-RGBW



- 5.700K Lichttemperatur
- Zusätzliche RGB-LEDs für die Statusanzeige
- 7 mögliche Farben
- 4 verschiedene Längen
- Drehbare Halterung
- Durchschleifbar
- PMMA-Abdeckung
- Schutzart IP54

- 5.700K light temperature
- Additional RGB-LED chips for status indication
- 7 possible colors
- 4 different lengths
- Turnable mounting
- Loop through
- PMMA cover
- Protection class IP54

# LED Aufbauleuchte ELN-RGBW

## LED surface mounted luminaire ELN-RGBW

**7 different  
color  
variations**

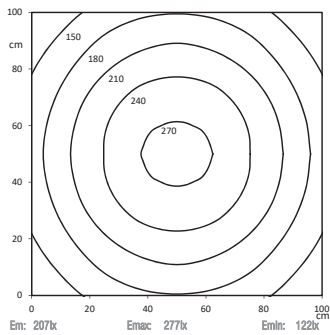


### Lichtverteilung | Light distribution

Lichtpunkthöhe | Metering distance: 100cm

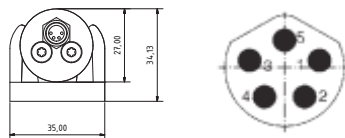
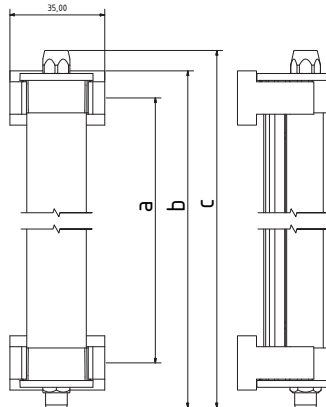
LED Aufbauleuchte ELN-RGBW 280

LED surface mounted luminaire ELN-RGBW 280



### Dimensionierung | Dimension

Maximaler Schraubenkopfdurchmesser |  
Maximum screw head diameter:  $\varnothing$  7,4 mm



### Technische Daten | Technical data

Leistung:	9,4W, 18,8W, 28,2W,37,6
Power consumption:	9,4W, 18,8W, 28,2W, 37,6W
Anschlusswert:	24V DC (-10%/+15%)
Connected value:	24V DC (-10%/+15%)
Anschlussart	M8 Steckverbinder*
Contact termination	M8 connector*
Gehäuse:	Aluminium eloxiert, Kunststoffhalterung
Housing:	aluminium anodized, plastic mounting
Schutzart:	IP54
Protection type:	IP54
Schutzklasse:	III
Protection class:	III
Abdeckung:	PMMA diffus
Coverage	safety glass diffuse
Farbtreue:	Ra / CRI $\geq$ 80
Color fidelity:	Ra / CRI $\geq$ 80
Lebensdauer:	min. 60 000h
Durability:	min. 60 000h
Max. Umgebungstemperatur:	45°C
Max. ambient temperature:	45°C
Optik:	120° Ohne Optik
Optics:	120° without optics
Belegung:	1 = +24V ws   wh
Pin assignment:	2 = +24V rt   rd
	3 = +24V gn   ge
	4 = +24V bl   bl
	5 = 0V

### 7 mögliche Farben | 7 possible color

- red
- green
- blue
- red+blue=magenta
- red+green= yellow
- blue+green= cyan
- red+blue+green= white

### Normen / Approbationen Standards / Approvals

- DIN EN 55015 (EMV)
- DIN EN 61547 (EMV)
- DIN EN 60598-1
- DIN EN 62471

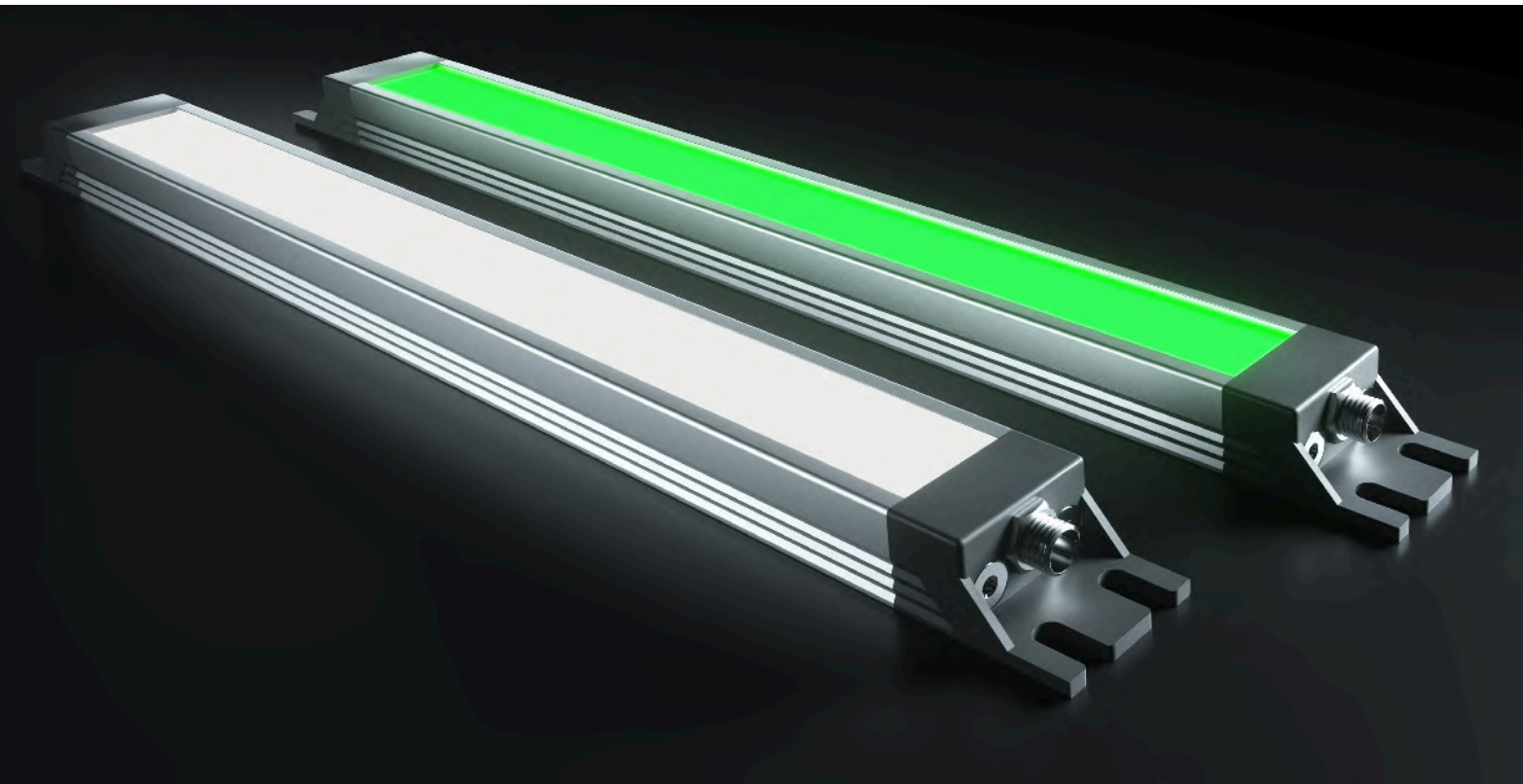


**E-Mail**  
[sales@sangel.com](mailto:sales@sangel.com)

**Hotline**  
**+49 521.911750**

Sangel-Bezeichnung Sangel description	Katalognr. Catalogue no.	Länge Length	Abdeckung Cover	Anschlussart Contact termination	Lichtfarbe Color temperature	Leistung Power
ELN-RGBW 280 D-DIFF-0-M8-55	15070702	a: 290,0mm b: 317,5mm c: 325,0mm	PMMA diffus PMMA diffuse	M8 Steckverbinder* M connector*	5.700K	9,4W
ELN-RGBW 560 D-DIFF-0-M8-55	15070703	a: 570,0mm b: 597,5mm c: 605,0mm	PMMA diffus PMMA diffuse	M8 Steckverbinder* M8 connector*	5.700K	18,8W
ELN-RGBW 840 D-DIFF-0-M8-55	15070704	a: 850,0mm b: 877,5mm c: 885,0mm	PMMA diffus PMMA diffuse	M8 Steckverbinder* M8 connector*	5.700K	28,2W
ELN-RGBW 1120 D-DIFF-0-M8-55	15070705	a: 1130,0mm b: 1157,5mm c: 1165,0mm	PMMA diffus PMMA diffuse	M8 Steckverbinder* M8 connector*	5.700K	37,6W
ELN-RGBW 280 D-DIFF-0-M8D-55	15070706	a: 290,0mm b: 317,5mm c: 325,0mm	PMMA diffus PMMA diffuse	M8 Steckverbinder* M8 connector*	5.700K	9,4W
ELN-RGBW 560 D-DIFF-0-M8D-55	15070707	a: 570,0mm b: 597,5mm c: 605,0mm	PMMA diffus PMMA diffuse	M8 Steckverbinder* M8 connector*	5.700K	18,8W

Technische Änderungen vorbehalten. Lichtstrom und Lichtfarbe können variieren.  
Specifications subject to change without notice. Luminous flux and light Color may vary.



SANGEL® Systemtechnik GmbH  
Schillerstraße 44  
33609 Bielefeld  
Fon +49 (0)521.91175-0  
Fax +49 (0)521.91175-75  
www.sangel.com  
sales@sangel.com

Ausgabe 1 | 2018  
0-000000-15650

**SANGEL®**  
Systemtechnik



# SCATTERGOOD & JOHNSON LTD

ELECTRICAL ENGINEERING & FLUID CONTROL DISTRIBUTORS

Est.1899

At Scattergood & Johnson Ltd, we pride ourselves on being a technical distributor to specialist industries.

Working with a range of quality product suppliers across a number of specialist markets, we are not your average 'box shifter' - we are your technical and supply chain partner.

We fully support every product we sell - for free! Our internal team and external sales engineers can answer any product or application question, no matter the complexity.

Backing up this technical ability is a range of 50,000+ products available from stock for nationwide next day delivery (same day if required!), or you can collect what you need from any of our trade counters around the UK.

Select your specialist interest below to learn more about how we can help.



Online, In Branch and On the Road - Scattergood & Johnson Ltd, there when you need us.

# [www.scatts.co.uk](http://www.scatts.co.uk)