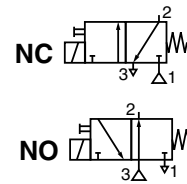


**JOUCOMATIC**

**POPPET VALVES**  
**solenoid air operated**  
 G3/8 to G1 1/2 tapped body



**3/2**  
 Series  
**284-285-286**  
 Type  
**DH**

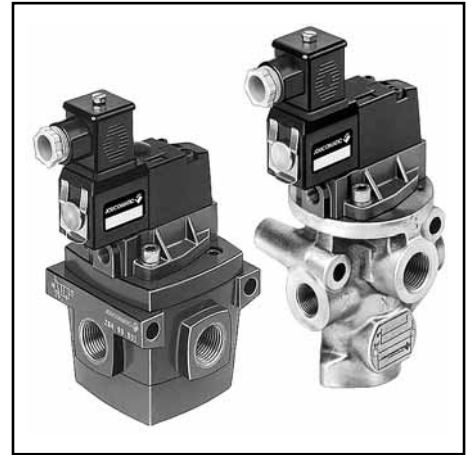
**GENERAL**

FLUID : air or neutral gas, filtered, lubricated or not  
 PRESSURE : 2 to 10 bar (Pilot 190)  
 : 2 to 12 bar (Pilot 192)  
 MAX. ALLOW. TEMPERATURE : - 10 °C ; + 60 °C  
 FLOW (Qv at 6 bar) : see table below  
 PILOT PRESSURE : In external supply, the pressure of the pilot fluid **must be at least** equal to the fluid pressure

**CONSTRUCTION**

**Series 284**  
 Body : die-casting zinc alloy  
 Sealing : nitrile (NBR)  
 and polyurethane (PUR)  
 Internal parts : light alloy  
 and acetal resin (POM)

**Series 285/286**  
 Body and internal parts : light alloy  
 Sealing : nitrile (NBR)



**ELECTRICAL CHARACTERISTICS OF PILOTS**

Type of sol. valve	Voltages		Consumption		Insulation class	Protection degree	Electrical connection
	~	=	Inrush	Hold			
Series 190	~	24V-48V-115V-230V - 50 Hz	9 VA	4 VA (3 W)	F	IP 65	Connector ISO 4400 rotatable x 90° - CM 10 (Pg 11P) <b>with simplified connections</b>
	=	12V-24V-48V-115 V	3 W				
Series 192	~	24V-115V-230V - 50 Hz	12 VA	6 VA (4 W)	F	IP 65	
	=	24V	5 W				

The solenoid valve 190 is dual voltage (24 V~, 12 V=) (48V~, 24V=) (115 V~, 48 V=) (230 V~, 115 V=)

**CHOICE OF EQUIPMENT**

FUNCTION NC Normally closed at rest					Manual override : ▼ : impulse		2 CODES		Connecteur type	Reference
Port Ø		Orifice Ø (mm)	Flow		VALVE	+	PILOT			
1 and 2	3		at 6 bar l/min (ANR)	Coeff. KV						
G 3/8	G 1/2	12	4500	64	28490040 28490041 28590238 28590239 28690025* 28690026*	+	19000022	with connector (LED)	-	
G 1/2	G 1/2	15	6000	85			19000046		without connector	-
G 3/4	G 1	26	12500	180			19000018	with connector (LED)	G/DH 304/O	
G 1	G 1	26	12500	180			19200085		G/DH 305/O	
G 1 1/4	G 1 1/2	40	35000	500			19260079		with M12 connection	GDM/DH 306/O
G 1 1/2	G 1 1/2	40	35000	500			19200030		without connector	GDM/DH 307/O

FUNCTION NO Normally open at rest					Manual override : ▼ : impulse		2 CODES		Connecteur type	Reference
Port Ø		Orifice Ø (mm)	Flow		VALVE	+	PILOT			
1 and 2	3		at 6 bar l/min (ANR)	Coeff. KV						
G 3/8	G 1/2	12	4500	64	28490042 28490043 28590240 28590241 28690027* 28690028*	+	19000022	with connector (LED)	-	
G 1/2	G 1/2	15	6000	85			19000046		without connector	-
G 3/4	G 1	26	12500	180			19000018	with connector (LED)	G/DH 304/F	
G 1	G 1	26	12500	180			19200085		G/DH 305/F	
G 1 1/4	G 1 1/2	40	35000	500			19260079		with M12 connection	GDM/DH 306/F
G 1 1/2	G 1 1/2	40	35000	500			19200030		without connector	GDM/DH 307/F

\*This equipment is always supplied with an intermediate amplifier for valves 3/2 - Ø 8 mm, Series 261 (26190067)

**OPTIONS** : see overleaf

Availability, design and specifications are subject to change without notice. All rights reserved.

**OPTIONS**

- Other voltages or 60Hz frequency on request
- Applications as a valve 2/2 (NC or NO), 3/2 with an amplifier, 3/2 or with pressure selection (can be used with vacuum - cat no. **28490027**)
- Solenoid pilot 192 with solenoid head for dusty explosive atmospheres (**DU**), zone 22
- Solenoid valve, intrinsically safe "I" (consult us).
- Connector with cable outlet, 2 m long : cat no. **88122612**
- Connector with transil protection (see "Coils and Accessories" section)
- Solenoid valve with connector and built-in visual indicator and protection :

Solenoid valve **without** connector ——— + ——— Connector with built-in visual indicator and RC protection

Type of solenoid valve	(M)	CODE of solenoid valve without connector
190 NC	×	<b>19000013</b>
	●	<b>19000014</b>
	▼	<b>19000018</b>
192 NC (1)	×	<b>19200022</b>
	●	<b>19200023</b>
	▼	<b>19200024</b>

CODES			
24 V (~/=)	48 V (~/=)	115 V (~/=)	230 V (~/=)
<b>88122603</b>	<b>88122604</b>	<b>88122605</b>	<b>88122608</b>

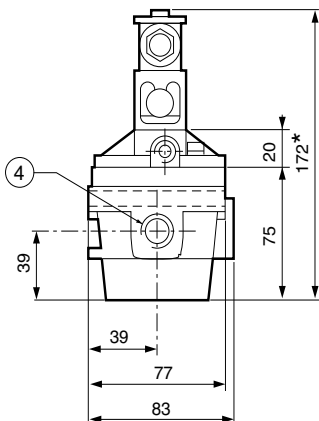
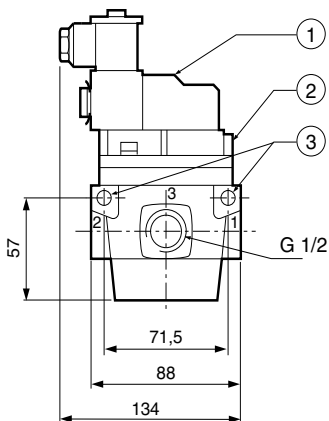
(M) Type of manual override on pilot(s) : × : without ● : screw ▼ : impulse

(1) Solenoid valve series 192 - 3/2 NC - Ø 2.1mm with exhaust in subbase

**DIMENSIONS AND WEIGHTS**

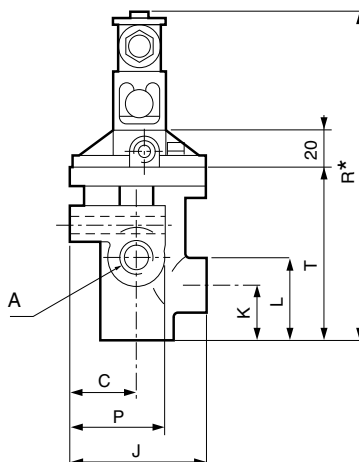
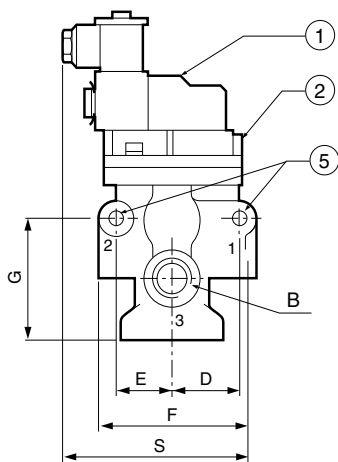
**VALVE Series 284**

Weight : 1.700 Kg



- ① Manual override
- ② Orifice G 1/8 for external supply
- ③ Side mounting : 2 Ø 9
- ④ 2 Ø G 3/8 or G 1/2
- ⑤ Side mounting : 2 Ø N
- \* + 15 mm for plug removal

**VALVE Series 285 - 286**



Orifices 1 & 2 Ø A	Orifices 3 Ø B	C	D	E	F	G	J	K NC NO	L	ØN	P	R	S	T	⚖ (kg)
G 3/4 G 1	G1	39	43,5	39	113	91	92	88 45	67	9	62	223	149	126	1,450
G 1 1/4 G 1 1/2	G1 1/2	46	66,5	52	165	130	124	124 64	94	13	78	333	176	207	4,150



# SCATTERGOOD & JOHNSON LTD

ELECTRICAL ENGINEERING & FLUID CONTROL DISTRIBUTORS

Est.1899

At Scattergood & Johnson Ltd, we pride ourselves on being a technical distributor to specialist industries.

Working with a range of quality product suppliers across a number of specialist markets, we are not your average 'box shifter' - we are your technical and supply chain partner.

We fully support every product we sell - for free! Our internal team and external sales engineers can answer any product or application question, no matter the complexity.

Backing up this technical ability is a range of 50,000+ products available from stock for nationwide next day delivery (same day if required!), or you can collect what you need from any of our trade counters around the UK.

Select your specialist interest below to learn more about how we can help.



Online, In Branch and On the Road - Scattergood & Johnson Ltd, there when you need us.

# [www.scatts.co.uk](http://www.scatts.co.uk)