

Series 543



# MULTIFUNCTION SPOOL VALVE

air and solenoid air operated  
ISO 5599/01 - Size 3

# 5/2-5/3

ports / positions

## SPECIFICATIONS

FLUID	: Air or neutral gas, filtered, lubricated or not
PRESSURE	: Can be used with vacuum – 0.950 bar max. – 0.950 to +12 bar (with external supply to pilot) +3 to +10/12 bar (with internal supply to pilot)
PILOT PRESSURE	- min. : 1.5 to 3 bar according to return operator - max. : 12 bar (10 bar with solenoid pilots)
AMBIENT TEMPERATURE	: –10°C, +60°C
FLOW (Qv at 6.3 bar)	: 4200 l/min (ANR)
FLOW COEFFICIENTS	: C = 16 x 10 <sup>-9</sup> m <sup>3</sup> /s.Pa (sonic conductance) b = 0.34 (absolute static pressure)
- conforming to ISO 6358	: KV = 60 ( l/min)
- conforming to NF E29312	: See table CHOICE OF EQUIPMENT
RESPONSE TIME	: 15 millions of cycles (in normal operating conditions)
LIFE	: ISO 5599/01 - Size 3
BASE	: By subbases G 1/2 - G 3/4
PORTS	: Single subbases ISO/AFNOR NF E49085
SUBBASES	: Joinable subbases ISO/VDMA 24345

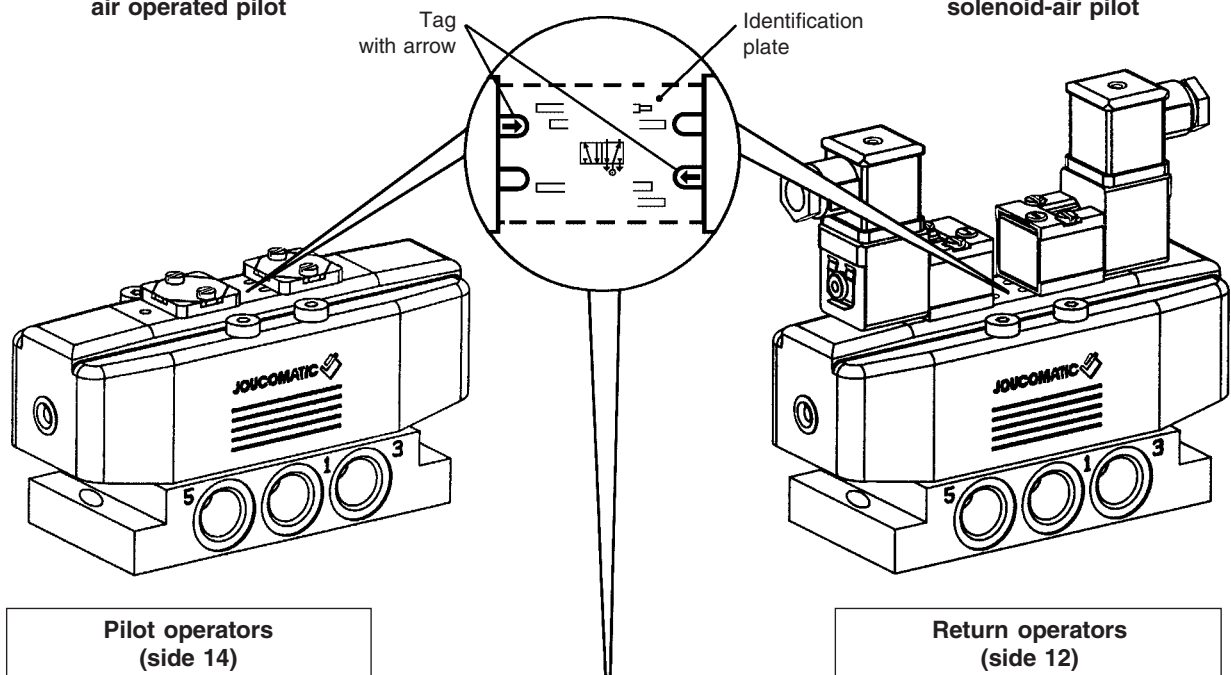


## MULTIFUNCTION

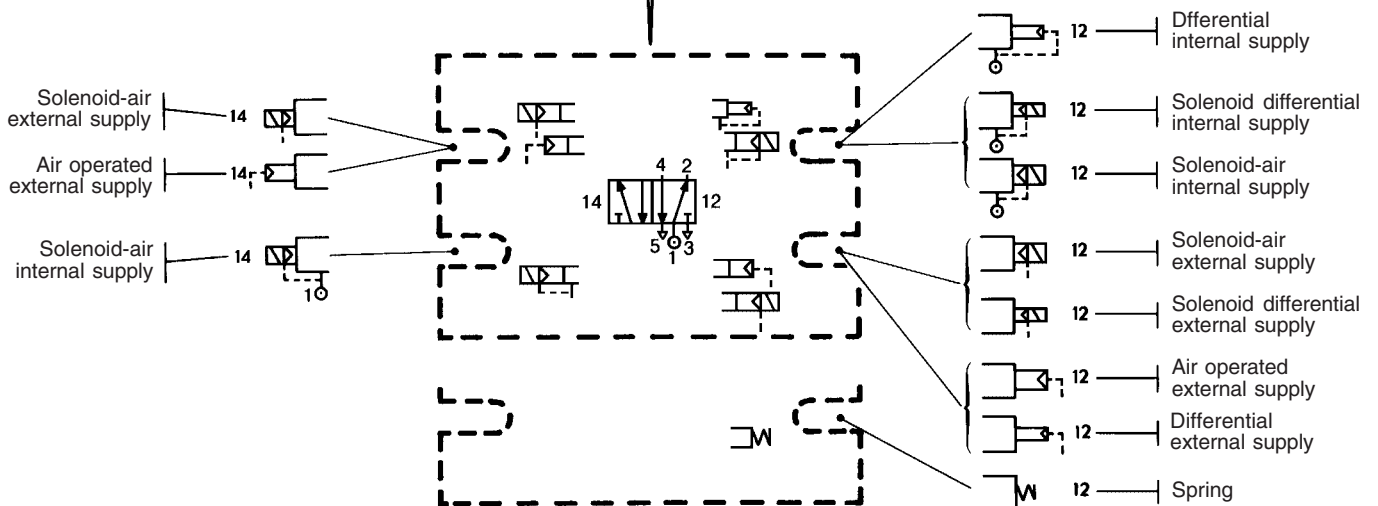
Multifunction valves are equipped with 2 pilot selector seals located on the upper part, on both sides : pilot and return. Each selector can be set in 2 positions to allow internal or external supply to the operators : air operated or solenoid-air pilot or return. External supply enables the valves to be used with a fluid pressure ranging from 0 to 12 bar and with vacuum. For this, it is only necessary to position the arrow of the selector into the notch matching the diagram of the required function (see below). Functions can be modified at will. The valves are delivered with the selector pre-set on the position corresponding to the function requested on order (see table choice of equipment).

Valve with  
air operated pilot

Valve with  
solenoid-air pilot



5



Series 543



**MULTIFUNCTION SPOOL VALVE**  
solenoid air operated  
**ISO 5599/01 - Size 3**

**5/2-5/3**  
ports / positions

**SPECIFICATIONS**

**FLUID PRESSURE** : Air or neutral gas, filtered, lubricated or not  
: +3 to +10 bar (with internal supply to pilot)  
+3 to +12 bar (with solenoid valve series 192)  
- 0.950 to +12 bar (with external supply to pilot)  
Can be used with vacuum - 0.950 bar max.

**PILOT PRESSURE** : See table CHOICE OF EQUIPMENT

**AMBIENT TEMPERATURE** : - 10°C, +60°C

**FLOW (Qv at 6.3 bar)** : 4200 l/min (ANR)

**FLOW COEFFICIENTS**  
- conforming to ISO 6358 : C =  $16 \times 10^{-8}$  m<sup>3</sup>/s.Pa (sonic conductance)  
b = 0,34 (absolute static pressure)

- conforming to NF E29312 : KV = 60 ( l/min)

**RESPONSE TIME** : See table CHOICE OF EQUIPMENT

**LIFE** : 15 millions of cycles (in normal operating conditions)

**BASE** : ISO 5599/01 - Size 3

**PORTS** : By subbases G 1/2 - G 3/4

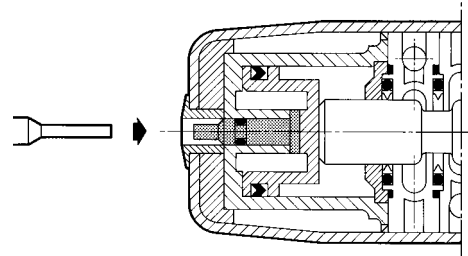
**SUBBASES** : Single subbases ISO/AFNOR NF E49085  
Joinable subbases ISO/VDMA 24345



1 = Pressure      12 =Return  
2-4 = Outlets      14 =Pilot  
3-5 = Exhausts

**CONSTRUCTION**

Painted steel cover  
Pilot or return casing : acetal resin (POM)  
Sealing : nitrile (NBR) and polyurethane (PUR)  
Internal parts : light alloy and acetal resin (POM)  
Multifunction pilot by selector seal  
Without or with manual testers checking the spool position or its manual override



**CHOICE OF EQUIPMENT 5/2**

5/2	FUNCTIONS	Response time (ms)		Pressure of the pilot fluid (in bar)		VALVE		2 CODES Quantity & code SOLENOID PILOT
		Ener-gized	De-ener-gized	min.	max.	WITHOUT manual tester	WITH manual testers	
	Solenoid-air pilot - Spring return	90	115	3	10	543 91 023	543 91 006	Manual override: ▼ : impulse  190 00 022 with connector (LED) +1x 190 60 005 with M12 connection 190 00 018 without connector
	Solenoid-air pilot - Differential return	75	90	3	10	543 91 024	543 91 007	
	Solenoid-air pilot - Air operated return	35	-	1,5	10	543 91 025	543 91 008	
	Solenoid-air pilot - Solenoid differential return	35	-	3	10	543 91 026	543 91 009	+2x 190 00 022 with connector (LED) 190 60 005 with M12 connection 190 00 018 without connector
	Solenoid-air pilot and return	35	-	1,5	10	543 91 027	543 91 010	

**CHOICE OF EQUIPMENT 5/3**

5/3 Symbols	Functions	Response time (ms)		Pressure of the pilot fluid (in bar)		VALVE		2 CODES + Quantity & code SOLENOID PILOT
		Ener-gized	De-ener-gized	min.	max.	WITHOUT manual tester	WITH manual testers	
	Pressure held <b>W1</b> Solenoid-air operated	90	115	3	10	543 91 028	543 91 011	Manual override: ▼ : impulse  190 00 022 with connector (LED) + 2x 190 60 005 with M12 connection 190 00 018 without connector
	Pressure applied <b>W2</b> Solenoid-air operated	60	115	3	10	543 91 029	543 91 014	
	Pressure release <b>W3</b> Solenoid-air operated	90	115	3	10	543 91 030	543 91 012	

**ELECTRICAL CHARACTERISTICS OF PILOTS**

Type of solenoid valve	Voltages		Consumption		Insulation class	Protection degree	Electrical connection
	~	=	Inrush	Hold			
Series 189	~	24V-115V-230V-50 Hz	6 VA	3,5VA(2,5W)	F	IP 65	Connector rotatable x 180° CM 8 (Pg 9P)
	=	24V	2,5 W				
Series 190	~	24V-48V-115V-230V-50 Hz	9 VA	4VA(3W)	F	IP 65	Connector ISO 4400 rotatable x 90° - CM 10 (Pg 11P) with simplified connection
	=	12V-24V-48V-110V	3 W				

The solenoid valve series 190 is dual-voltage (24V ~, 12V =) (48V ~, 24V =) (115V ~, 48V =) (230V ~, 110V =)

**OPTIONS**

**SOLENOID PILOTS**

- Solenoid valve pilot 3/2 series 192 in 3 versions : 1-standard 2-with solenoid head and waterproof metal enclosure (see P512) 3-complying with European standards EEx "d", "m" or "me" for use in explosive atmospheres (see P595)
- Solenoid valve series 189 certified EEx "m" (see P593)
- Solenoid valve intrinsically safe series 630/ia or 195/ia certified EEx "i" (see P590 - P592)
- Solenoid valves series 189 - 190 with double pulse coil (see P514)
- Connector with cable outlet, 2 m long (see P515)
- Connector with transil protection (see P515-4)
- Solenoid valve with built-in visual indicator and protection :

Solenoid valve **without** connector \_\_\_\_\_ + \_\_\_\_\_ Connector with built-in visual indicator and VDR/RC protection

Type of solenoid valve	(M)	CODE solenoid valve <b>without</b> connector	CODE (~ / =)			
			24V	48V	115V	230V
189 NC	●	189 00 002	881 22 405	881 22 406	881 22 407	881 22 410
190 NC	×	190 00 013	881 22 603	881 22 604	881 22 605	881 22 608
	●	190 00 014				
	▼	190 00 018				
192 NC (1)	×	192 00 022	881 22 603	881 22 604	881 22 605	881 22 608
	●	192 00 023				
	▼	192 00 024				

(M) Type of manual override on pilot(s) : × : without ● : screwdriver ▼ : impulse

(1) Solenoid valve series 192 - 3/2 NC - Ø 2.1mm with exhaust in subbase

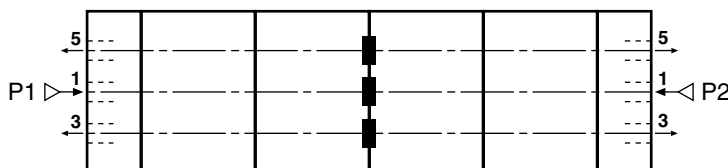
**SUBBASES AND ACCESSORIES** (see overleaf)

# Series 543

## SUBBASES ISO 3

DESCRIPTION - TYPE		CODES
Single subbase	Single subbase with side port	G 1/2 355 00 171
		G 3/4 355 00 192
Joinable subbases ISO - VDMA	Joinable subbase with bottom port G 1/2 (orifices 12 and 14 with side port G 1/8)	355 00 173
	Set of 2 end plates ; ports 1-3-5 : G 1 (supplied with 3 plugs)	355 00 174
	Set of 3 plugs for main pressure (1) and exhausts (3-5) ports for supply with 2 different pressures (see below)	881 35 520
Set of transfer plate and connections for joinable subbases		see page P570-18 and P570-29

The concept of mounting plug sets enables joinable subbases to be supplied with 2 different pressures.

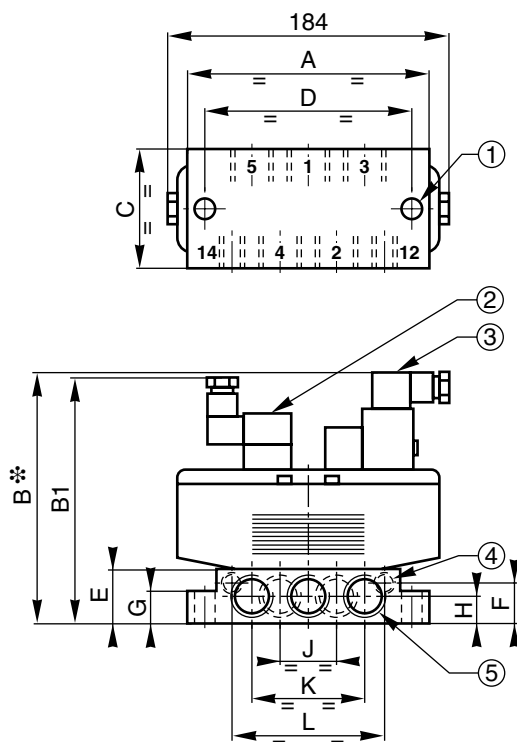


## ACCESSORIES ISO3

Designation		Symbol	CODES	
<b>Blanking plate to cover interface ISO2</b> This plate allows later assembly with a spool valve.			881 35 519	
<b>Flow regulator sandwich</b> This unit, fitted between the subbase and the valve, incorporates 2 flow regulators in the exhaust ports 3 and 5. Flow regulators can be used to control the speed of a double acting cylinder. Weight : 0,230kg			346 00 469	
<b>Sandwich pressure regulator module</b>  This module, which is placed between a subbase and a spool valve, is designed to regulate the pressure and the port according to:  - Adjustable pressure: 0.5 to 10 bar - G1/8 (A) port on top for pressure gauge connection - Locking adjustment knob of "Pull-Turn-Push" type	<b>on port 1</b> (supply pressure)	regulator flow at 6 bar: 2000 l/min weight: 2.210kg	 12	346 00 464
	<b>on port 2</b>	regulator flow at 6 bar: 2700 l/min weight: 2.210kg	 14	346 00 473
	<b>on port 4</b>	regulator flow at 6 bar: 2700 l/min weight: 2.210kg		346 00 465
	<b>on ports 2 and 4</b>	regulator flow at 6 bar: 2700 l/min weight: 3.200kg		346 00 466
 E = 67mm      L = 208mm				
Gauge Ø40 (0 - 12 bar)			343 00 014	
G1/8 bracket connection for pressure gauge mounting			881 00 617	

**DIMENSIONS AND WEIGHTS**

VALVES ON SINGLE SUBBASE WITH SIDE PORTS (ISO/AFNOR)

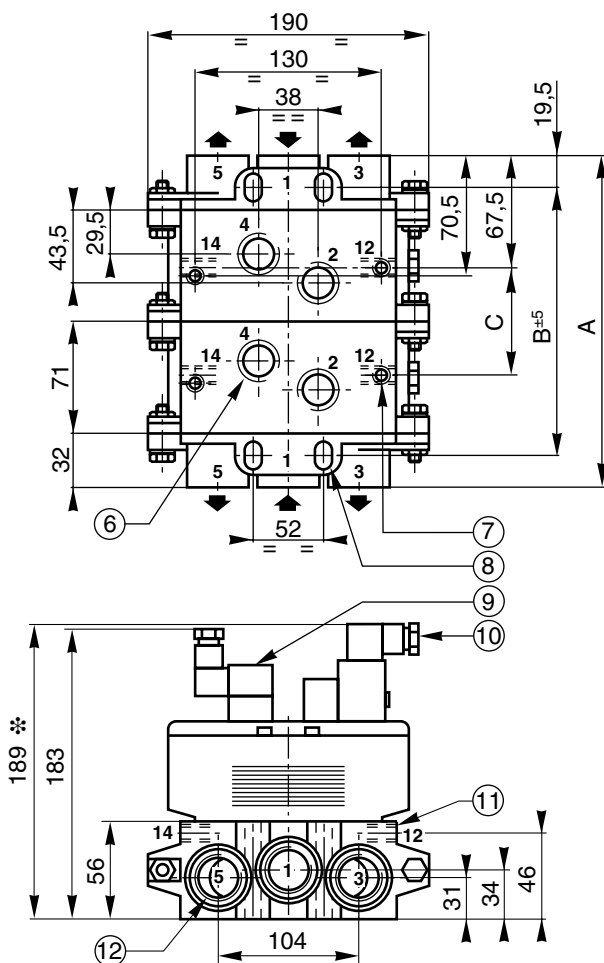


Dimensions	Subbases	
	G 1/2	G 3/4
A	149	149
B	165*	183*
B1	158	176
C	71	71
D	136	136
E	32	50
F	22	40
G	18	18
H	17	20
J	32	36
K	68	80
L	90	92

- ① Mounting : 2 Ø 6.6
- ② Solenoid valve series 189
- ③ Solenoid valve series 190/192
- ④ 2 ports (12-14) : G 1/8
- ⑤ 5 ports (1-2-3-4-5) : G 1/2 or G 3/4
- \* dimensions with pilot 192 + 15 mm for plug removal

5

VALVES ON JOINABLE SUBBASES WITH BOTTOM PORTS (ISO/VDMA)



Number of subbases	A	B ± 5	C	Weights (kg)	
				Valves + 2 pilots + subbases + end plates	
				Pilots 189	Pilots 190
2	206	167	71	4,140	4,260
3	277	238	142	5,740	5,860
4	348	309	213	7,340	7,460
5	419	380	284	8,940	9,060
6	490	451	355	10,540	10,660
7	561	522	426	12,140	12,260

Weight of pilot : 189 = 0.120 Kg    190 = 0.180 Kg  
 Set of end plates supplied with 3 plugs G 1 (for 1-3-5)

- ⑥ 2 ports (4-2) : G 1/2
- ⑦ Bottom mounting : 2 holes M8 Ø 20
- ⑧ Front mounting : 4 holes Ø12
- ⑨ Solenoid valve series 189
- ⑩ Solenoid valve series 190/192
- ⑪ 2 ports (12-14) : G 1/8
- ⑫ 3 ports (1-3-5) : G 1
- \* dimensions with pilot 192 + 15 mm for plug removal



# SCATTERGOOD & JOHNSON LTD

ELECTRICAL ENGINEERING & FLUID CONTROL DISTRIBUTORS

Est.1899

At Scattergood & Johnson Ltd, we pride ourselves on being a technical distributor to specialist industries.

Working with a range of quality product suppliers across a number of specialist markets, we are not your average 'box shifter' - we are your technical and supply chain partner.

We fully support every product we sell - for free! Our internal team and external sales engineers can answer any product or application question, no matter the complexity.

Backing up this technical ability is a range of 50,000+ products available from stock for nationwide next day delivery (same day if required!), or you can collect what you need from any of our trade counters around the UK.

Select your specialist interest below to learn more about how we can help.



Online, In Branch and On the Road - Scattergood & Johnson Ltd, there when you need us.

# [www.scatts.co.uk](http://www.scatts.co.uk)