

SERIES

651

652

653

PARTICULATE FILTER



- Large selection of filtering capacities to remove particulate and water droplets from compressed air or inert gas
- Sintered polyethylene elements include 5 and 25 Microns
- Optional extended temperature range of -40°C to +80°C
- Innovative two position plastic drain with manual and semi-automatic functions. Additional drains include an automatic style (brass) and manual (stainless steel)
- Polycarbonate and Aluminium bowls with or without glass gauge, to meet industry all application requirements
- Threaded ports allow for individual or modular mounting
- Air Purity Class according to ISO 8573-1: 2010



Performance Data					
Series			651	652	653
Port sizes			1/8, 1/4	1/4, 3/8, 1/2	3/4, 1
Thread type			G (NPTF in option)		
Nominal flow - ISO 6358 P1 = 6,3 bar ΔP = 1 bar	1/8	Micron Rating	l/min (ANR)		
		5 μm	885	-	-
	25 μm	920	-	-	
	1/4	5 μm	1250	2020	-
		25 μm	1410	2250	-
	3/8	5 μm	-	2190	-
		25 μm	-	3390	-
	1/2	5 μm	-	2290	-
		25 μm	-	3700	-
	3/4	5 μm	-	-	4000
		25 μm	-	-	4700
	1	5 μm	-	-	4250
		25 μm	-	-	5000
	Maximum inlet pressure (bar)	Polycarbonate bowl		16	
Aluminium bowl		16		20	
Ambient temperature range (°C)					-20 to +50
Fluid temperature range (°C)					-20 to +50
Fluid					air or inert gas
Weight (kg)	w/Polycarbonate bowl		0,238	0,426	0,934
	w/Aluminium bowl		0,382	0,553	1,140

Materials in contact with fluid	
Body	Aluminium
Seals	NBR/FPM
Filter element	Sintered polyethylene
Bowl	Polycarbonate or aluminium

Air Purity Class - ISO 8573-1: 2010	
5 μm	(5:8:4)
25 μm	(6:8:4)

All leaflets are available on: www.asco.com

4 - Air Preparation

HOW TO ORDER

Particulate Filter

G 651 A B B P 2 J A00 0 N

[Configurator - CAD Files](#)

Thread connection

- G = ISO 228/1-G ⁽¹⁾
- 8 = NPTF

Product series

- 651
- 652
- 653

Revision letter

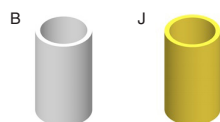
A

Product type

- B = Filter - Particulate

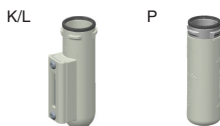
Elements

- B = 5 µm (White)
- J = 25 µm (Yellow)



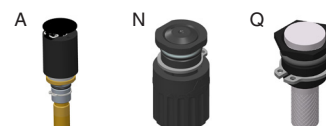
Bowl type

- K = Metal bowl without sight gauge
- L = Metal bowl with sight gauge (glass)
- P = Polycarbonate bowl with bowl guard



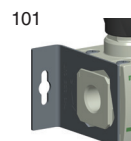
Drain type

- 0 = Without
- A = Auto drain normally open
- N = Manual/Semi-automatic drain
- Q = Manual drain - Stainless steel



Options ⁽²⁾

- A00 = Without option
- 101 = Side Mounting Brackets
- 105 = High temperature (+80°C)
- 106 = Low temperature (-40°C) ⁽³⁾
- 109 = FPM seals
- 117 = ATEX zones 1-21
- 124 = CUTR Certification (EAC)
- 125 = CUTR Ex
- 202 = 105 + 109
- 2A9 = 105 + 106



Port size

- 1 = 1/8 (651 Series)
- 2 = 1/4 (651 or 652 Series)
- 3 = 3/8 (652 Series)
- 4 = 1/2 (652 Series)
- 5 = 3/4 (653 Series)
- 6 = 1 (653 Series)

⁽¹⁾ Conforms to ISO standards 1179-1

⁽²⁾ If multiple options are required, please use the on-line CAD configurator on the website to generate the part number (www.asco.com).

⁽³⁾ Compressed air must be dry enough so no ice formation is present on the product. All bowls should be emptied prior to ambient temperatures dropping below 0°C.

SERIES

651

652

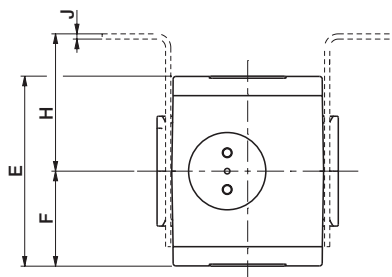
653



Dimensions: mm

Dimensional Drawing - 651/652/653 Series Particulate Filter

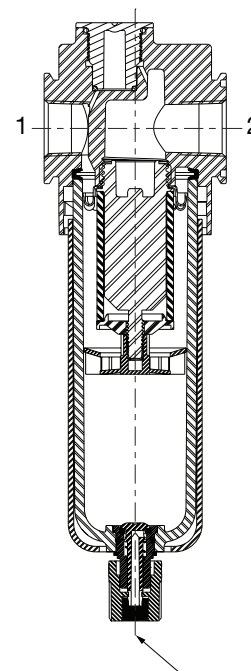
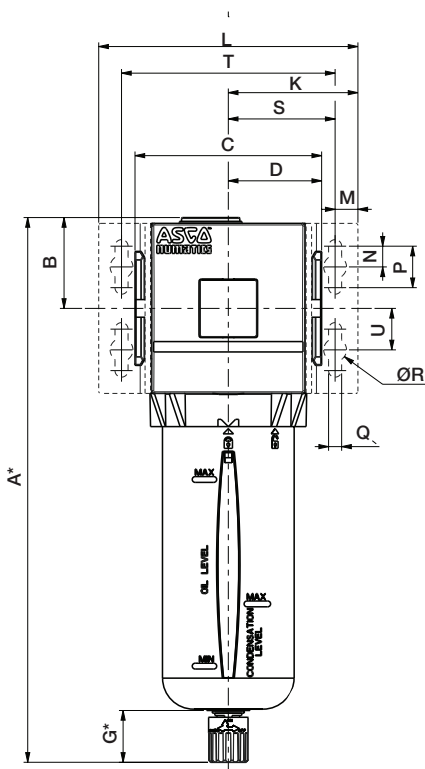
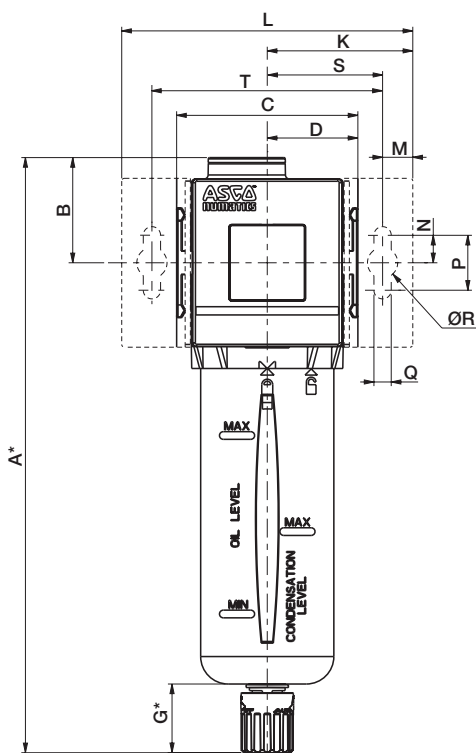
[Configurator - CAD Files](#)



651/652 Series

653 Series

Cross Section - 651/652/653 Series Particulate Filter



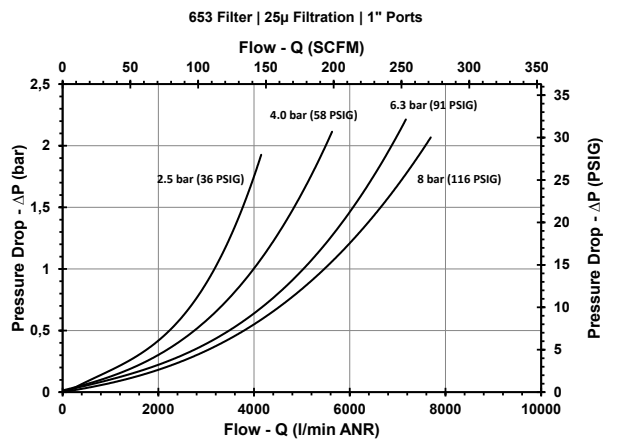
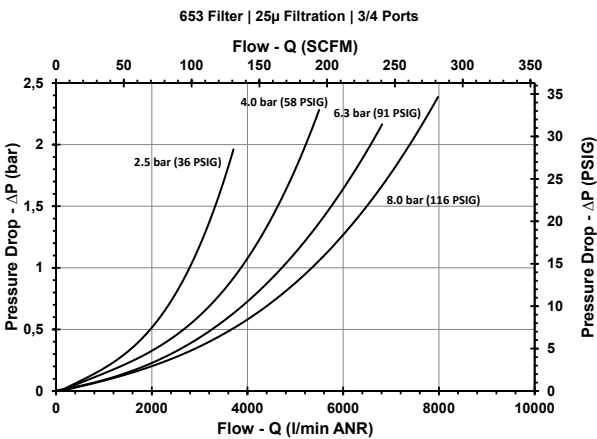
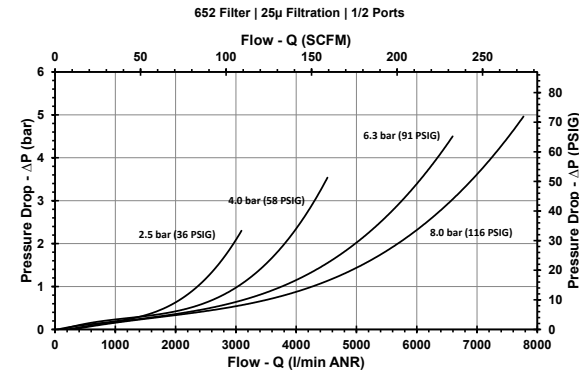
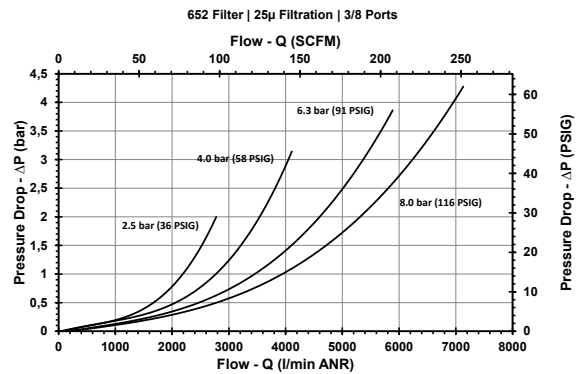
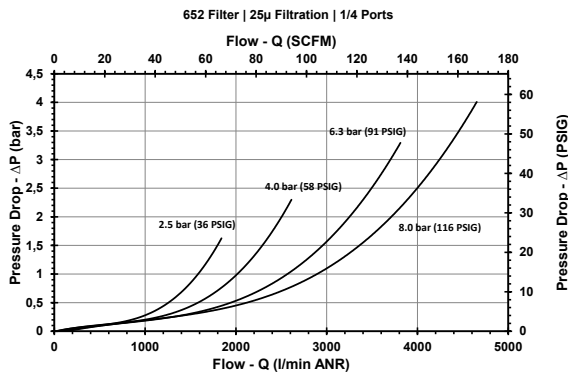
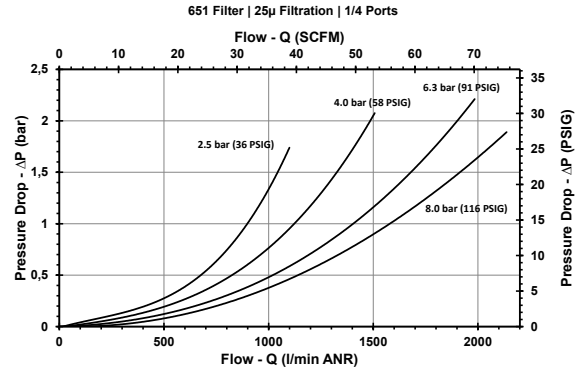
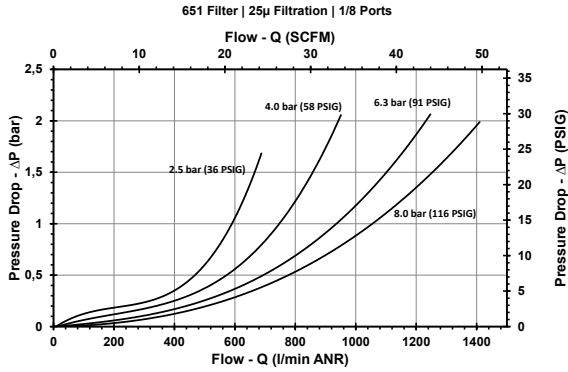
To remove bowl allow:
 651 - 44 mm
 652 - 75 mm
 653 - 100 mm
 from the bottom
 of the bowl drain.

Series	A	B	C	D	E	F	G	H*	J
651	197	33,8	50	25	58	29	25	44,5	1,27
652	217	38,3	66	33	69	34,5	25	50	1,9
653	260,7	43,8	90	45	93,2	46,6	25	62	3

Series	K	L	M	N	P	Q	ØR	S	T	U
651	46	92	11	10	20	6,3	11	35	70	-
652	53	106	11	10	20	6,3	11	42	84	-
653	62,5	125	11	10	20	6,3	11	51,5	103	20

* Variable dimension based on type of drain that is specified. If an Automatic Drain is specified, add another 5 mm to "G" dimension, which also adds 5 mm to the "A" dimension.

Particulate Filter Flow Charts



01801GB-2017/R02
Availability, design and specifications are subject to change without notice. All rights reserved.

All leaflets are available on: www.asco.com



SCATTERGOOD & JOHNSON LTD

ELECTRICAL ENGINEERING & FLUID CONTROL DISTRIBUTORS

Est.1899

At Scattergood & Johnson Ltd, we pride ourselves on being a technical distributor to specialist industries.

Working with a range of quality product suppliers across a number of specialist markets, we are not your average 'box shifter' - we are your technical and supply chain partner.

We fully support every product we sell - for free! Our internal team and external sales engineers can answer any product or application question, no matter the complexity.

Backing up this technical ability is a range of 50,000+ products available from stock for nationwide next day delivery (same day if required!), or you can collect what you need from any of our trade counters around the UK.

Select your specialist interest below to learn more about how we can help.



Online, In Branch and On the Road - Scattergood & Johnson Ltd, there when you need us.

www.scatts.co.uk