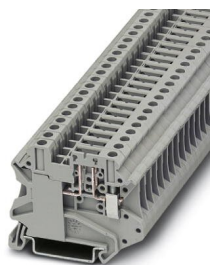


Disconnect terminal block - UT 4-TG-EX - 3046143



<https://www.phoenixcontact.com/il/products/3046143>

Please be informed that the data shown in this PDF document is generated from our Online Catalog. Please find the complete data in the user documentation. Our General Terms of Use for Downloads are valid.



Disconnect terminal block, nom. voltage: 500 V, nominal current: 20 A, connection method: Screw connection, cross section: 0.14 mm² - 6 mm², AWG: 26 - 10, length: 57.8 mm, width: 6.2 mm, color: gray, mounting: NS 35/7,5, NS 35/15

Your advantages

- Suitable for process technology, thanks to Ex nA approval
- Double bridge shaft enables individual potential distribution and supply
- Compact design and high current carrying capacity of 20 A

Disconnect terminal block - UT 4-TG-EX - 3046143



<https://www.phoenixcontact.com/it/products/3046143>

Commercial Data

Order Key	3046143
Packing unit	50 pc
Minimum order quantity	1 pc
Catalog Page	Page 163 (C-1-2019)
GTIN	4046356919180
Weight per Piece (including packing)	13.2 GRM
Weight per Piece (excluding packing)	13.2 GRM
Customs tariff number	85369010
Country of origin	PL

Disconnect terminal block - UT 4-TG-EX

- 3046143



<https://www.phoenixcontact.com/il/products/3046143>

Technical Data

Environmental and real-life conditions

Ambient conditions

Ambient temperature (operation)	-60 °C ... 105 °C (max. short-term operating temperature 125°C)
Ambient temperature (assembly)	-5 °C ... 70 °C
Ambient temperature (storage/transport)	-25 °C ... 60 °C (for a short time, not exceeding 24 h, -60 °C to +70 °C)
Permissible humidity (storage/transport)	30 % ... 70 %
Ambient temperature (actuation)	-5 °C ... 70 °C

Notes

General	Current and voltage are determined by the plug used.
---------	--

Environmental Product Compliance

China RoHS	Environmentally Friendly Use Period = 50 years For details about hazardous substances go to tab "Downloads", Category "Manufacturer's declaration"
------------	---

Electrical properties

Rated surge voltage	6 kV
Maximum power dissipation for nominal condition	1.02 W

Mechanical properties

Mechanical data

Open side panel	No
-----------------	----

Dimensions

Height NS 35/15	55 mm
Length	57.8 mm
Width	6.2 mm
Height NS 35/7,5	47.5 mm

Material specifications

Relative insulation material temperature index (Elec., UL 746 B)	130 °C
Static insulating material application in cold	-60 °C
Insulating material group	I
Color	gray
Surface flammability NFPA 130 (ASTM E 162)	passed
Calorimetric heat release NFPA 130 (ASTM E 1354)	27,5 MJ/kg
Smoke gas toxicity NFPA 130 (SMP 800C)	passed
Fire protection for rail vehicles (DIN EN 45545-2) R23	HL 1 - HL 3
Fire protection for rail vehicles (DIN EN 45545-2) R22	HL 1 - HL 3

Disconnect terminal block - UT 4-TG-EX

- 3046143

<https://www.phoenixcontact.com/il/products/3046143>

Fire protection for rail vehicles (DIN EN 45545-2) R24	HL 1 - HL 3
Insulating material	PA
Fire protection for rail vehicles (DIN EN 45545-2) R26	HL 1 - HL 3
Temperature index of insulation material (DIN EN 60216-1 (VDE 0304-21))	125 °C
Flammability rating according to UL 94	V0
Specific optical density of smoke NFPA 130 (ASTM E 662)	passed

Mounting

Mounting type	NS 35/7,5
	NS 35/15

Connection data

Grounding foot	No
Number of connections per level	2
Nominal cross section	4 mm ²

Level 1 above 1 below 1

Nominal current	20 A
Designation	Level 1 above 1 below 1
Nominal voltage	500 V
Screw thread	M3
Maximum load current	20 A (with 6 mm ² conductor cross section) 20 A (with 6 mm ² conductor cross section)
Stripping length	9 mm
2 conductors with same cross section, flexible	0.14 mm ² ... 1.5 mm ²
Conductor cross section flexible	0.14 mm ² ... 6 mm ²
2 conductors with same cross section, solid	0.14 mm ² ... 1.5 mm ²
Conductor cross section, flexible [AWG]	26 ... 10
Flexible conductor cross section flexible (ferrule, w/o plastic sleeve)	0.14 mm ² ... 4 mm ²
2 conductors with same cross section, flexible, with ferrule without plastic sleeve	0.14 mm ² ... 1.5 mm ²
Internal cylindrical gage	A4
Flexible conductor cross section (ferrule with plastic sleeve)	0.14 mm ² ... 4 mm ²
Conductor cross section solid	0.14 mm ² ... 6 mm ²
Nominal cross section	2.5 mm ²
Tightening torque	0.6 ... 0.8 Nm
Connection in acc. with standard	IEC 60947-7-1
2 conductors with the same cross section, flexible, with TWIN ferrule with plastic sleeve	0.5 mm ² ... 2.5 mm ²
Cross section AWG	26 ... 10

Standards and regulations

Connection in acc. with standard	IEC 60947-7-1
----------------------------------	---------------

Disconnect terminal block - UT 4-TG-EX - 3046143



<https://www.phoenixcontact.com/il/products/3046143>

Product properties

Area of application	Machine building
	Plant engineering
Potentials	1
Number of levels	1
Number of connections	2

Insulation characteristics

Overvoltage category	III
Degree of pollution	3

Disconnect terminal block - UT 4-TG-EX - 3046143



<https://www.phoenixcontact.com/il/products/3046143>

Drawings

Circuit diagram




Disconnect terminal block - UT 4-TG-EX - 3046143




<https://www.phoenixcontact.com/il/products/3046143>

Approvals

cULus Recognized


UL Recognized 


Nominal voltage U_N	250 V
Nominal current I_N	6.3 A
AWG/kcmil	26-10
Min. cross section	26 mm ²
Max. cross section	10 mm ²


cUL Recognized 

Nominal voltage U_N	250 V
Nominal current I_N	6.3 A
AWG/kcmil	26-10
Min. cross section	26 mm ²
Max. cross section	10 mm ²

CSA 

EAC Ex 

NEPSI 

ATEX 

Nominal voltage U_N	250 V
Nominal current I_N	6.3 A
AWG/kcmil	0.14-4
Min. cross section	0.14 mm ²

Disconnect terminal block - UT 4-TG-EX - 3046143



<https://www.phoenixcontact.com/il/products/3046143>

Max. cross section	4 mm ²
--------------------	-------------------

Disconnect terminal block - UT 4-TG-EX - 3046143



<https://www.phoenixcontact.com/il/products/3046143>

Environmental Product Compliance

China RoHS

Environmentally Friendly Use Period = 50 years

China RoHS

For details about hazardous substances go to tab "Downloads",
Category "Manufacturer's declaration"

Disconnect terminal block - UT 4-TG-EX - 3046143

<https://www.phoenixcontact.com/il/products/3046143>

Accessories

Fuse

Fuse - P-FU 5X20-EX - 3036807



Fuse plug, connection method: Plug connection, nominal current: 6.3 A, nom. voltage: 500 V, width: 6.2 mm, fuse type: G / 5 x 20, color: black

Fuse

Fuse - P-FU 5X20 LED 24-EX - 3036821



Fuse plug, nominal current: 6.3 A, nom. voltage: 500 V, width: 6.2 mm, fuse type: G / 5 x 20, color: black

Disconnect terminal block - UT 4-TG-EX - 3046143

<https://www.phoenixcontact.com/il/products/3046143>

Fuse

Fuse - P-FU 5X20 LED 60-EX - 3036823



Fuse plug, nominal current: 6.3 A, nom. voltage: 500 V, width: 6.2 mm, fuse type:
G / 5 x 20, color: black

Fuse

Fuse - P-FU 5X20 LA 250-EX - 3036836



Fuse plug, nominal current: 6.3 A, nom. voltage: 500 V, width: 6.2 mm, fuse type:
G / 5 x 20, color: black

Disconnect terminal block - UT 4-TG-EX - 3046143

<https://www.phoenixcontact.com/il/products/3046143>

DIN rail

DIN rail - NS 35/ 7,5 PERF 2000MM - 0801733



DIN rail perforated, Standard profile, width: 35 mm, height: 7.5 mm, acc. to EN 60715, material: Steel, galvanized, passivated with a thick layer, length: 2000 mm, color: silver

DIN rail

DIN rail - NS 35/ 7,5 UNPERF 2000MM - 0801681



DIN rail, unperforated, Standard profile, width: 35 mm, height: 7.5 mm, acc. to EN 60715, material: Steel, galvanized, passivated with a thick layer, length: 2000 mm, color: silver

Disconnect terminal block - UT 4-TG-EX - 3046143



<https://www.phoenixcontact.com/il/products/3046143>

DIN rail

DIN rail - NS 35/ 7,5 WH PERF 2000MM - 1204119



DIN rail perforated, Standard profile, width: 35 mm, height: 7.5 mm, acc. to EN 60715, material: Steel, Galvanized, white passivated, length: 2000 mm, color: silver

DIN rail

DIN rail - NS 35/ 7,5 WH UNPERF 2000MM - 1204122



DIN rail, unperforated, Standard profile, width: 35 mm, height: 7.5 mm, acc. to EN 60715, material: Steel, Galvanized, white passivated, length: 2000 mm, color: silver

Disconnect terminal block - UT 4-TG-EX - 3046143



<https://www.phoenixcontact.com/il/products/3046143>

DIN rail

DIN rail - NS 35/ 7,5 AL UNPERF 2000MM - 0801704



DIN rail, unperforated, Standard profile, width: 35 mm, height: 7.5 mm, acc. to EN 60715, material: Aluminum, uncoated, length: 2000 mm, color: silver

DIN rail

DIN rail - NS 35/ 7,5 ZN PERF 2000MM - 1206421



DIN rail perforated, Standard profile, width: 35 mm, height: 7.5 mm, acc. to EN 60715, material: Steel, galvanized, length: 2000 mm, color: silver

Disconnect terminal block - UT 4-TG-EX - 3046143



<https://www.phoenixcontact.com/il/products/3046143>

DIN rail

DIN rail - NS 35/ 7,5 ZN UNPERF 2000MM - 1206434



DIN rail, unperforated, Standard profile, width: 35 mm, height: 7.5 mm, acc. to EN 60715, material: Steel, galvanized, length: 2000 mm, color: silver

DIN rail

DIN rail - NS 35/ 7,5 CU UNPERF 2000MM - 0801762



DIN rail, unperforated, Standard profile, width: 35 mm, height: 7.5 mm, acc. to EN 60715, material: Copper, uncoated, length: 2000 mm, color: copper-colored

Disconnect terminal block - UT 4-TG-EX - 3046143



<https://www.phoenixcontact.com/il/products/3046143>

DIN rail

DIN rail - NS 35/ 7,5 CAP - 1206560

DIN rail end piece, for DIN rail NS 35/7.5



DIN rail

DIN rail - NS 35/15 PERF 2000MM - 1201730



DIN rail perforated, Standard profile, width: 35 mm, height: 15 mm, similar to EN 60715, material: Steel, galvanized, passivated with a thick layer, length: 2000 mm, color: silver

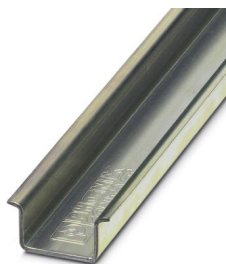
Disconnect terminal block - UT 4-TG-EX - 3046143



<https://www.phoenixcontact.com/il/products/3046143>

DIN rail

DIN rail - NS 35/15 UNPERF 2000MM - 1201714



DIN rail, unperforated, Standard profile, width: 35 mm, height: 15 mm, similar to EN 60715, material: Steel, galvanized, passivated with a thick layer, length: 2000 mm, color: silver

DIN rail

DIN rail - NS 35/15 WH PERF 2000MM - 0806602



DIN rail perforated, Standard profile, width: 35 mm, height: 15 mm, similar to EN 60715, material: Steel, Galvanized, white passivated, length: 2000 mm, color: silver

Disconnect terminal block - UT 4-TG-EX - 3046143



<https://www.phoenixcontact.com/il/products/3046143>

DIN rail

DIN rail - NS 35/15 WH UNPERF 2000MM - 1204135



DIN rail, unperforated, Standard profile, width: 35 mm, height: 15 mm, similar to EN 60715, material: Steel, Galvanized, white passivated, length: 2000 mm, color: silver

DIN rail

DIN rail - NS 35/15 AL UNPERF 2000MM - 1201756



DIN rail, unperforated, Standard profile, width: 35 mm, height: 15 mm, similar to EN 60715, material: Aluminum, uncoated, length: 2000 mm, color: silver

Disconnect terminal block - UT 4-TG-EX - 3046143



<https://www.phoenixcontact.com/il/products/3046143>

DIN rail

DIN rail - NS 35/15 ZN PERF 2000MM - 1206599



DIN rail perforated, Standard profile, width: 35 mm, height: 15 mm, similar to EN 60715, material: Steel, galvanized, length: 2000 mm, color: silver

DIN rail

DIN rail - NS 35/15 ZN UNPERF 2000MM - 1206586



DIN rail, unperforated, Standard profile, width: 35 mm, height: 15 mm, similar to EN 60715, material: Steel, galvanized, length: 2000 mm, color: silver

Disconnect terminal block - UT 4-TG-EX - 3046143

<https://www.phoenixcontact.com/il/products/3046143>

DIN rail

DIN rail - NS 35/15 CU UNPERF 2000MM - 1201895



DIN rail, unperforated, Standard profile, width: 35 mm, height: 15 mm, similar to EN 60715, material: Copper, uncoated, length: 2000 mm, color: copper-colored

DIN rail

DIN rail - NS 35/15 CAP - 1206573



DIN rail end piece, for DIN rail NS 35/15

Disconnect terminal block - UT 4-TG-EX - 3046143



<https://www.phoenixcontact.com/il/products/3046143>

DIN rail

DIN rail - NS 35/15-2,3 UNPERF 2000MM - 1201798



DIN rail, unperforated, Standard profile 2.3 mm, width: 35 mm, height: 15 mm, acc. to EN 60715, material: Steel, galvanized, passivated with a thick layer, length: 2000 mm, color: silver

Partition plate

Partition plate - ATP-UT-TWIN - 3047183



Partition plate, length: 62.1 mm, width: 2.2 mm, height: 52.5 mm, color: gray

Disconnect terminal block - UT 4-TG-EX - 3046143



<https://www.phoenixcontact.com/il/products/3046143>

Marker pen

Marker pen - X-PEN 0,35 - 0811228



Marker pen without ink cartridge, for manual labeling of markers, labeling extremely wipe-proof, line thickness 0.35 mm

Labeled terminal marker

Labeled terminal marker - ZB 6 CUS - 0824992



Zack marker strip, can be ordered: Strip, white, labeled according to customer specifications, mounting type: snap into tall marker groove, for terminal block width: 6.2 mm, lettering field size: 6.15 x 10.5 mm, Number of individual labels: 10

Disconnect terminal block - UT 4-TG-EX - 3046143



<https://www.phoenixcontact.com/il/products/3046143>

Labeled terminal marker

Labeled terminal marker - ZB 6,LGS:FORTL.ZAHLEN - 1051016



Zack marker strip, Strip, white, labeled, can be labeled with: CMS-P1-PLOTTER, printed horizontally: consecutive numbers 1 ... 10, 11 ... 20, etc. up to 491 ... 500, mounting type: snap into tall marker groove, for terminal block width: 6.2 mm, lettering field size: 6.15 x 10.5 mm, Number of individual labels: 10

Labeled terminal marker

Labeled terminal marker - ZB 6,QR:FORTL.ZAHLEN - 1051029



Zack marker strip, Strip, white, labeled, can be labeled with: CMS-P1-PLOTTER, Printed vertically: consecutive numbers 1 ... 10, 11 ... 20, etc. up to 491 ... 500, mounting type: snap into tall marker groove, for terminal block width: 6.2 mm, lettering field size: 6.15 x 10.5 mm, Number of individual labels: 10

Disconnect terminal block - UT 4-TG-EX - 3046143



<https://www.phoenixcontact.com/il/products/3046143>

Labeled terminal marker

Labeled terminal marker - ZB 6,LGS:GLEICHE ZAHLEN - 1051032



Zack marker strip, Strip, white, labeled, can be labeled with: CMS-P1-PLOTTER, printed horizontally: Identical numbers 1 or 2, etc. up to 100, mounting type: snap into tall marker groove, for terminal block width: 6.2 mm, lettering field size: 6.15 x 10.5 mm, Number of individual labels: 10

Labeled terminal marker

Labeled terminal marker - ZB 6,LGS:L1-N,PE - 1051414



Marker for terminal blocks, Strip, white, labeled, can be labeled with: CMS-P1-PLOTTER, horizontal: L1, L2, L3, N, PE, L1, L2, L3, N, PE, mounting type: snap into tall marker groove, for terminal block width: 6.2 mm, lettering field size: 6.15 x 10.5 mm, Number of individual labels: 10

Disconnect terminal block - UT 4-TG-EX - 3046143



<https://www.phoenixcontact.com/il/products/3046143>

Labeled terminal marker

Labeled terminal marker - ZB 6,LGS:U-N - 1051430



Marker for terminal blocks, Strip, white, labeled, can be labeled with: CMS-P1-PLOTTER, printed horizontally: U, V, W, N, GND, U, V, W, N, GND, mounting type: snap into tall marker groove, for terminal block width: 6.2 mm, lettering field size: 6.15 x 10.5 mm, Number of individual labels: 10

Labeled terminal marker

Labeled terminal marker - UC-TM 6 CUS - 0824589



Marker for terminal blocks, can be ordered: by sheet, white, labeled according to customer specifications, mounting type: snap into tall marker groove, for terminal block width: 6.2 mm, lettering field size: 5.6 x 10.5 mm, Number of individual labels: 80

Disconnect terminal block - UT 4-TG-EX - 3046143

<https://www.phoenixcontact.com/il/products/3046143>

Labeled terminal marker

Labeled terminal marker - UCT-TM 6 CUS - 0829602



Marker for terminal blocks, can be ordered: by sheet, white, labeled according to customer specifications, mounting type: snap into tall marker groove, for terminal block width: 6.2 mm, lettering field size: 5.6 x 10.5 mm, Number of individual labels: 60

Terminal marking

Terminal marking - ZB 6:UNBEDRUCKT - 1051003



Zack marker strip, Strip, white, unlabeled, can be labeled with: PLOTMARK, CMS-P1-PLOTTER, mounting type: snap into tall marker groove, for terminal block width: 6.2 mm, lettering field size: 6.15 x 10.5 mm, Number of individual labels: 10

Disconnect terminal block - UT 4-TG-EX - 3046143



<https://www.phoenixcontact.com/il/products/3046143>

Terminal marking

Terminal marking - UC-TM 6 - 0818085



Marker for terminal blocks, Sheet, white, unlabeled, can be labeled with: BLUEMARK ID COLOR, BLUEMARK ID, BLUEMARK CLED, PLOTMARK, CMS-P1-PLOTTER, mounting type: snap into tall marker groove, for terminal block width: 6.2 mm, lettering field size: 5.6 x 10.5 mm, Number of individual labels: 80

Terminal marking

Terminal marking - UCT-TM 6 - 0828736



Marker for terminal blocks, Sheet, white, unlabeled, can be labeled with: TOPMARK NEO, TOPMARK LASER, BLUEMARK ID COLOR, BLUEMARK ID, BLUEMARK CLED, THERMOMARK PRIME, THERMOMARK CARD 2.0, THERMOMARK CARD, mounting type: snap into tall marker groove, for terminal block width: 6.2 mm, lettering field size: 5.6 x 10.5 mm, Number of individual labels: 60

Disconnect terminal block - UT 4-TG-EX - 3046143

<https://www.phoenixcontact.com/il/products/3046143>

Test plug terminal block

Test plug terminal block - PS-6 - 3030996



Test plugs, Modular test plug, color: red

Test plug terminal block

Test plug terminal block - PS-6/2,3MM RD - 3038736



Test plugs, color: red

Disconnect terminal block - UT 4-TG-EX - 3046143

<https://www.phoenixcontact.com/il/products/3046143>

Knife

Knife - P-DI - 3036783



Isolating plugs, length: 10.8 mm, width: 3.5 mm, height: 23.1 mm, color: orange

Knife

Knife - P-DI GY - 3047390



Isolating plugs, length: 10.8 mm, width: 3.5 mm, height: 23.1 mm, color: gray

Disconnect terminal block - UT 4-TG-EX - 3046143



<https://www.phoenixcontact.com/il/products/3046143>

Knife

Knife - P-DI GN - 1071062



Isolating plugs, length: 10.8 mm, width: 3.5 mm, height: 23.1 mm, color: green

Knife

Knife - P-DI - 3036783



Isolating plugs, length: 10.8 mm, width: 3.5 mm, height: 23.1 mm, color: orange

Disconnect terminal block - UT 4-TG-EX - 3046143



<https://www.phoenixcontact.com/il/products/3046143>

Jumper

Jumper - FBS 2-6 - 3030336



Plug-in bridge, pitch: 6.2 mm, width: 10.7 mm, number of positions: 2, color: red

Jumper

Jumper - FBS 3-6 - 3030242



Plug-in bridge, pitch: 6.2 mm, width: 16.9 mm, number of positions: 3, color: red

Disconnect terminal block - UT 4-TG-EX - 3046143

<https://www.phoenixcontact.com/il/products/3046143>

Jumper

Jumper - FBS 4-6 - 3030255



Plug-in bridge, pitch: 6.2 mm, width: 23.1 mm, number of positions: 4, color: red

Jumper

Jumper - FBS 5-6 - 3030349



Plug-in bridge, pitch: 6.2 mm, width: 29.3 mm, number of positions: 5, color: red

Disconnect terminal block - UT 4-TG-EX - 3046143

<https://www.phoenixcontact.com/il/products/3046143>

Jumper

Jumper - FBS 6-6 - 1008238



Plug-in bridge, One side not fully isolated, pitch: 6.2 mm, width: 35.5 mm, number of positions: 6, color: red

Jumper

Jumper - FBS 10-6 - 3030271



Plug-in bridge, pitch: 6.2 mm, width: 60.3 mm, number of positions: 10, color: red

Disconnect terminal block - UT 4-TG-EX - 3046143



<https://www.phoenixcontact.com/il/products/3046143>

Jumper

Jumper - FBS 20-6 - 3030365



Plug-in bridge, pitch: 6.2 mm, width: 122.3 mm, number of positions: 20, color: red

Jumper

Jumper - FBS 50-6 - 3032224



Plug-in bridge, pitch: 6.2 mm, width: 308.3 mm, number of positions: 50, color: red

Disconnect terminal block - UT 4-TG-EX - 3046143

<https://www.phoenixcontact.com/it/products/3046143>

Planning and marking software

Planning and marking software - PROJECT COMPLETE - 1050453



Intuitive planning and marking software for configuring terminal strips and for professional marking of marking materials for terminal blocks, conductors, cables, devices, and systems. The software is available for download

Screwdriver tools

Screwdriver tools - SZS 0,6X3,5 - 1205053



Actuation tool, for ST terminal blocks, insulated, also suitable for use as a bladed screwdriver, size: 0.6 x 3.5 x 100 mm, 2-component grip, with non-slip grip

Disconnect terminal block - UT 4-TG-EX - 3046143

<https://www.phoenixcontact.com/il/products/3046143>

Component plug terminal block

Component plug terminal block - P-CO - 3036796



Component connector, for installing components that can be individually selected, nominal current: 6 A, pitch: 5.2 mm, length: 24.2 mm, width: 5.1 mm, height: 33.2 mm, number of positions: 1, color: gray

Component plug terminal block

Component plug terminal block - P-CO 1N4007/R-L - 3032457



Component connector, with diode 1N4007, length: 24.2 mm, width: 5.2 mm, height: 33.3 mm, number of positions: 1, color: gray

Disconnect terminal block - UT 4-TG-EX - 3046143

<https://www.phoenixcontact.com/il/products/3046143>

Component plug terminal block

Component plug terminal block - P-CO 1N4007/L-R - 3032460



Component connector, with diode 1N4007, length: 24.2 mm, width: 5.2 mm, height: 33.3 mm, number of positions: 1, color: gray

Component plug terminal block

Component plug terminal block - P-CO XL - 3036797



Component connector, for installing components that can be individually selected up to a diameter of 10 mm and power dissipation of up to 1 W, nominal current: 10 A, length: 41.2 mm, width: 12.3 mm, height: 37.5 mm, number of positions: 1, color: gray

Disconnect terminal block - UT 4-TG-EX - 3046143



<https://www.phoenixcontact.com/il/products/3046143>

Component plug terminal block

Component plug terminal block - P-CO XL SKN - 3036798



Component connector, specifically for holding the SKN 2,5 diode, nominal current: 10 A, length: 41.2 mm, width: 12.3 mm, height: 37.5 mm, number of positions: 1, color: gray

Component plug terminal block

Component plug terminal block - P-CO - 3036796



Component connector, for installing components that can be individually selected, nominal current: 6 A, pitch: 5.2 mm, length: 24.2 mm, width: 5.1 mm, height: 33.2 mm, number of positions: 1, color: gray

Disconnect terminal block - UT 4-TG-EX - 3046143

<https://www.phoenixcontact.com/il/products/3046143>

Component plug terminal block

Component plug terminal block - P-CO 1N4007/R-L - 3032457



Component connector, with diode 1N4007, length: 24.2 mm, width: 5.2 mm, height: 33.3 mm, number of positions: 1, color: gray

Component plug terminal block

Component plug terminal block - P-CO 1N4007/L-R - 3032460



Component connector, with diode 1N4007, length: 24.2 mm, width: 5.2 mm, height: 33.3 mm, number of positions: 1, color: gray

Disconnect terminal block - UT 4-TG-EX - 3046143

<https://www.phoenixcontact.com/il/products/3046143>

Component plug terminal block

Component plug terminal block - P-CO XL-UT - 3036799



Component connector, for installing components that can be individually selected up to a diameter of 10 mm and power dissipation of up to 1 W, nominal current: 10 A, length: 41.2 mm, width: 12.3 mm, height: 37.5 mm, number of positions: 1, color: gray

Test socket

Test socket - PAI-4-FIX-5/6 BU - 3035975



4 mm test adapter, for terminal blocks with 5.2 mm and 6.2 mm pitch

Disconnect terminal block - UT 4-TG-EX - 3046143



<https://www.phoenixcontact.com/il/products/3046143>

Test socket

Test socket - PAI-4-FIX-5/6 OG - 3035974



4 mm test adapter, for terminal blocks with 5.2 mm and 6.2 mm pitch

Test socket

Test socket - PAI-4-FIX-5/6 YE - 3035977



4 mm test adapter, for terminal blocks with 5.2 mm and 6.2 mm pitch

Disconnect terminal block - UT 4-TG-EX - 3046143

<https://www.phoenixcontact.com/il/products/3046143>

Test socket

Test socket - PAI-4-FIX-5/6 RD - 3035976



4 mm test adapter, for terminal blocks with 5.2 mm and 6.2 mm pitch

Test socket

Test socket - PAI-4-FIX-5/6 GN - 3035978



4 mm test adapter, for terminal blocks with 5.2 mm and 6.2 mm pitch

Disconnect terminal block - UT 4-TG-EX - 3046143



<https://www.phoenixcontact.com/il/products/3046143>

Test socket

Test socket - PAI-4-FIX-5/6 BK - 3035980



4 mm test adapter, for terminal blocks with 5.2 mm and 6.2 mm pitch

Test socket

Test socket - PAI-4-FIX-5/6 GY - 3035982



4 mm test adapter, for terminal blocks with 5.2 mm and 6.2 mm pitch

Disconnect terminal block - UT 4-TG-EX - 3046143

<https://www.phoenixcontact.com/il/products/3046143>

Test socket

Test socket - PAI-4-FIX-5/6 VT - 3035979



4 mm test adapter, for terminal blocks with 5.2 mm and 6.2 mm pitch

Test socket

Test socket - PAI-4-FIX-5/6 BN - 3035981



4 mm test adapter, for terminal blocks with 5.2 mm and 6.2 mm pitch

Disconnect terminal block - UT 4-TG-EX - 3046143



<https://www.phoenixcontact.com/il/products/3046143>

Test socket

Test socket - PAI-4-FIX-5/6 WH - 3035983



4 mm test adapter, for terminal blocks with 5.2 mm and 6.2 mm pitch

End block

End block - CLIPFIX 35 - 3022218



Quick mounting end clamp for NS 35/7,5 DIN rail or NS 35/15 DIN rail, with marking option, width: 9.5 mm, color: gray

Disconnect terminal block - UT 4-TG-EX - 3046143

<https://www.phoenixcontact.com/il/products/3046143>

End block

End block - CLIPFIX 35-5 - 3022276



Quick mounting end clamp for NS 35/7,5 DIN rail or NS 35/15 DIN rail, with marking option, with parking option for FBS...5, FBS...6, KSS 5, KSS 6, width: 5.15 mm, color: gray

End block

End block - E/NS 35 N - 0800886



End clamp, width: 9.5 mm, color: gray

Disconnect terminal block - UT 4-TG-EX - 3046143

<https://www.phoenixcontact.com/il/products/3046143>

Bridge

Bridge - P-FIX - 3038956



Feed-through connector, length: 10.5 mm, width: 4 mm, color: gray

Bridge

Bridge - P-FIX - 3038956



Feed-through connector, length: 10.5 mm, width: 4 mm, color: gray

Phoenix Contact 2021 © - all rights reserved
<https://www.phoenixcontact.com>

PHOENIX CONTACT Israel Ltd.
P.O.B. 1799 Industrial Park Hasharon
Quadima 60920
+972-9-8915700
info@phoenixcontact.co.il



SCATTERGOOD & JOHNSON LTD

ELECTRICAL ENGINEERING & FLUID CONTROL DISTRIBUTORS

Est.1899

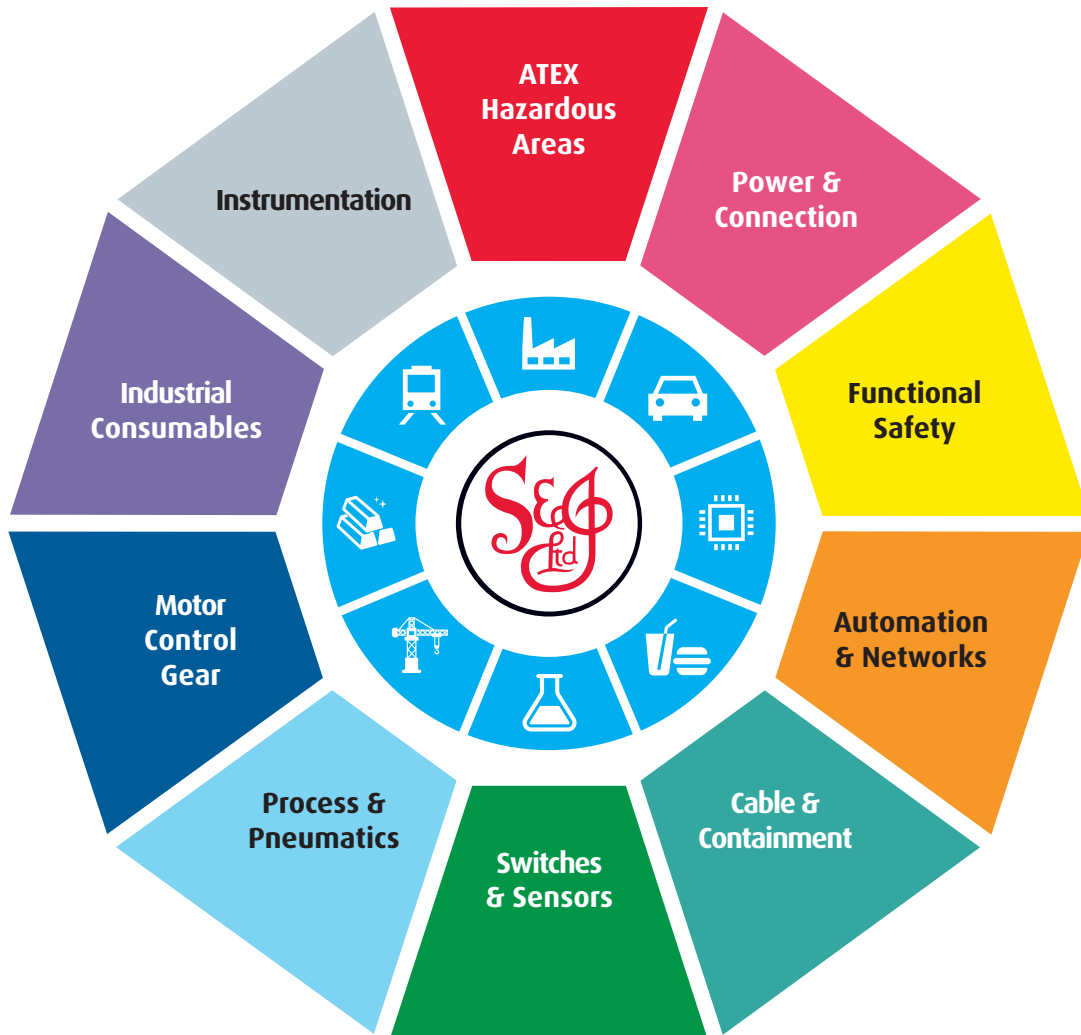
At Scattergood & Johnson Ltd, we pride ourselves on being a technical distributor to specialist industries.

Working with a range of quality product suppliers across a number of specialist markets, we are not your average 'box shifter' - we are your technical and supply chain partner.

We fully support every product we sell - for free! Our internal team and external sales engineers can answer any product or application question, no matter the complexity.

Backing up this technical ability is a range of 50,000+ products available from stock for nationwide next day delivery (same day if required!), or you can collect what you need from any of our trade counters around the UK.

Select your specialist interest below to learn more about how we can help.



Online, In Branch and On the Road - Scattergood & Johnson Ltd, there when you need us.

www.scatts.co.uk