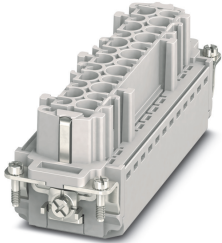


## Contact insert - HC-B24-I-PT-F - 1407735

Please be informed that the data shown in this PDF Document is generated from our Online Catalog. Please find the complete data in the user's documentation. Our General Terms of Use for Downloads are valid (<http://phoenixcontact.com/download>)




Contact insert, number of positions: 24+PE, size: B24, number of connections per position: 1, Socket, Push-in connection, 500 V, 16 A, 0.14 mm<sup>2</sup> ... 2.5 mm<sup>2</sup>, application: Power

### Your advantages

- ✓ Easy installation without tools, even when mounted, with push-in connection technology
- ✓ Shortest installation time compared to other connection technologies
- ✓ Quick and effortless wiring, in particular when space is tight
- ✓ Automatic cabling with robots possible
- ✓ Safe wiring and operation with color-coded actuators
- ✓ Shock and vibration-resistant in accordance with DIN EN 61373
- ✓ Cost-effective and fast coding with plastic profiles
- ✓ Test connection for 2 mm test plug



### Key Commercial Data

|                                      |   |
|--------------------------------------|---|
| Packing unit                         | 1 pc  |
| GTIN                                 | <br>4 046356 777704 |
| GTIN                                 | 4046356777704   |
| Weight per Piece (excluding packing) | 115.000 g   |
| Custom tariff number                 | 85366990  |
| Country of origin                    | China   |
| Sales Key                            | BF7ABC  |

### Technical data

#### General

|                       |  |
|-----------------------|--|
| Note                  | only use flexible conductors with ferrules                     |
|                       | Connectors may be operated only when there is no load/voltage. |
| Connection technology | Push-in connection   |
| Torque                | 0.8 Nm ... 1.2 Nm (PE connection)                              |

## Contact insert - HC-B24-I-PT-F - 1407735

### Technical data

#### General

|                                    |   |
|------------------------------------|---|
|                                    | 0.5 Nm ... 0.8 Nm (Mounting screws for mounting in the HEAVYCON housing)                  |
| Number of connections per position | 1   |
| Degree of pollution                | 3   |
| Overvoltage category               | III   |
| Number of positions                | 24+PE   |
| Insertion/withdrawal cycles        | ≥ 500   |
| Size                               | B24   |
|                                    | B48   |
| Contact numbering                  | 1 - 24  |
| Conductor cross section            | 0.14 mm <sup>2</sup> ... 2.5 mm <sup>2</sup>  |
| Connection cross section AWG       | 26 ... 14   |
| Stripping length                   | 8 mm ... 10 mm  |
| Assembly instructions              | To ensure correct use, installation in housing with IP54 protection or better is required |

#### Ambient conditions

|                                 |  |
|---------------------------------|--|
| Ambient temperature (operation) | -40 °C ... 125 °C (including heating up of contacts) |
|---------------------------------|--|

#### Material data

|                          |   |
|--------------------------|---|
| Contact material         | Copper alloy  |
| Contact surface material | Ag/Sn (tarnish protection)  |
| Contact carrier material | PC  |
| Standards/regulations    | PC: Fire protection in rail vehicles - requirement sets R22, R23, and R24 acc. to DIN EN 45545-2 (Risk level HL1 - HL3) |

#### Electrical characteristics

|                       |                       |
|-----------------------|-----------------------|
| Rated voltage (III/3) | 500 V                 |
| Rated surge voltage   | 6 kV                  |
| Rated current         | 16 A (power contacts) |
| SCCR                  | 5 kA (UL 2237)        |

#### Standards and Regulations

|                       |   |
|-----------------------|---|
| Standards/regulations | PC: Fire protection in rail vehicles - requirement sets R22, R23, and R24 acc. to DIN EN 45545-2 (Risk level HL1 - HL3) |
|-----------------------|---|

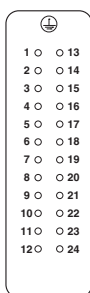
#### Environmental Product Compliance

|            |   |
|------------|---|
| China RoHS | Environmentally friendly use period: unlimited = EFUP-e |
|            | No hazardous substances above threshold values          |

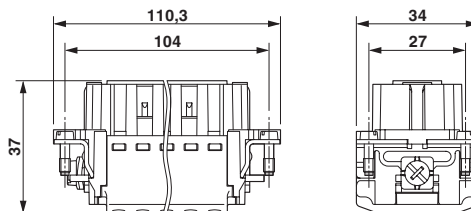
### Drawings

# Contact insert - HC-B24-I-PT-F - 1407735

Schematic diagram



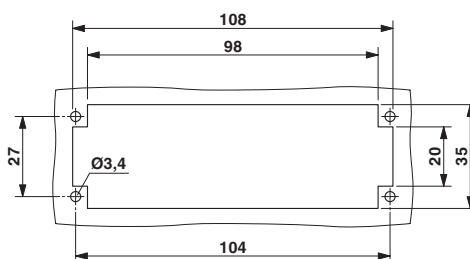
Dimensional drawing



Dimensional drawing

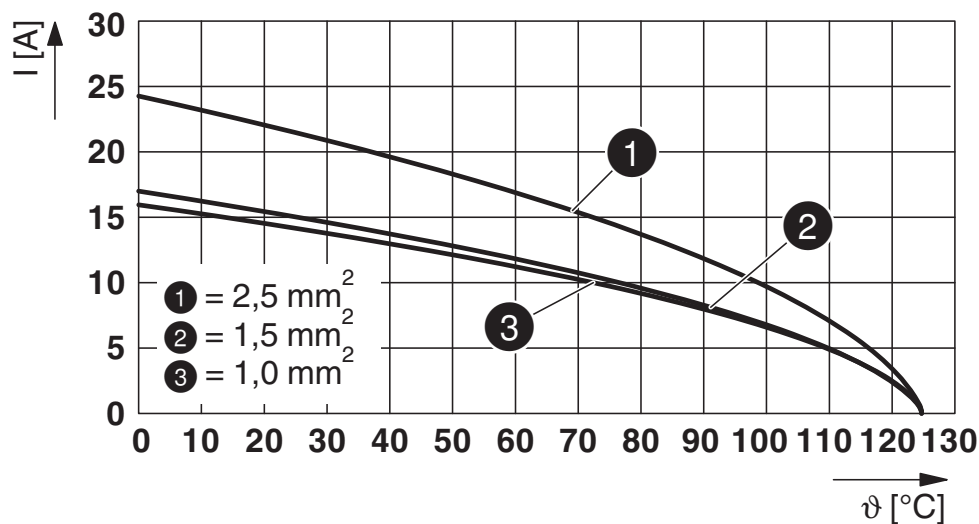
Connector pin assignment, connection side

Dimensional drawing



Mounting cutout when used without housing

Diagram



Derating diagram

## Classifications

eCl@ss

|               |          |
|---------------|----------|
| eCl@ss 10.0.1 | 27440205 |
|---------------|----------|

## Contact insert - HC-B24-I-PT-F - 1407735

### Classifications

#### eCl@ss

|             |          |
|-------------|----------|
| eCl@ss 11.0 | 27440205 |
| eCl@ss 4.0  | 27140800 |
| eCl@ss 4.1  | 27140800 |
| eCl@ss 5.0  | 27143400 |
| eCl@ss 5.1  | 27261200 |
| eCl@ss 6.0  | 27261200 |
| eCl@ss 7.0  | 27440205 |
| eCl@ss 9.0  | 27440205 |

#### ETIM

|          |          |
|----------|----------|
| ETIM 3.0 | EC000438 |
| ETIM 4.0 | EC000438 |
| ETIM 6.0 | EC000438 |
| ETIM 7.0 | EC000438 |

#### UNSPSC

|               |          |
|---------------|----------|
| UNSPSC 6.01   | 30211923 |
| UNSPSC 7.0901 | 39121522 |
| UNSPSC 11     | 39121522 |
| UNSPSC 12.01  | 39121522 |
| UNSPSC 13.2   | 39121522 |
| UNSPSC 18.0   | 39121522 |
| UNSPSC 19.0   | 39121522 |
| UNSPSC 20.0   | 39121522 |
| UNSPSC 21.0   | 39121522 |

### Approvals

#### Approvals

---

Approvals

CSA / UL Recognized / EAC / DNV GL / EAC / cULus Recognized

---

Ex Approvals

---


#### Approval details


<https://www.phoenixcontact.com/gb/products/1407735>



## Contact insert - HC-B24-I-PT-F - 1407735

### Approvals


|                            |   |   |       |
|----------------------------|---|---|-------|
| CSA                        |  | <a href="http://www.csagroup.org/services-industries/product-listing/">http://www.csagroup.org/services-industries/product-listing/</a> | 13631 |
| Nominal voltage UN         |   | 600 V   |       |
| Nominal current IN         |   | 10 A  |       |
| mm <sup>2</sup> /AWG/kcmil |   | 14  |       |

|                            |   |   |               |
|----------------------------|---|---|---------------|
| UL Recognized              |  | <a href="http://database.ul.com/cgi-bin/XYV/template/LISEXT/1FRAME/index.htm">http://database.ul.com/cgi-bin/XYV/template/LISEXT/1FRAME/index.htm</a> | FILE E 118976 |
| Nominal voltage UN         |   | 600 V   |               |
| Nominal current IN         |   | 13 A  |               |
| mm <sup>2</sup> /AWG/kcmil |   | 14  |               |

|     |   |  |                          |
|-----|---|--|--------------------------|
| EAC |  |  | RU C-<br>DE.AI30.B.01102 |
|-----|---|--|--------------------------|

|        |   |   |            |
|--------|---|---|------------|
| DNV GL |  | <a href="https://approvalfinder.dnvgl.com/">https://approvalfinder.dnvgl.com/</a> | TAE000037S |
|--------|---|---|------------|

|     |   |  |                          |
|-----|---|--|--------------------------|
| EAC |  |  | RU C-<br>DE.BL08.B.00511 |
|-----|---|--|--------------------------|

|                            |   |   |         |
|----------------------------|---|---|---------|
| cULus Recognized           |  | <a href="http://database.ul.com/cgi-bin/XYV/template/LISEXT/1FRAME/index.htm">http://database.ul.com/cgi-bin/XYV/template/LISEXT/1FRAME/index.htm</a> | E468743 |
| Nominal voltage UN         |   | 600 V   |         |
| Nominal current IN         |   | 13 A  |         |
| mm <sup>2</sup> /AWG/kcmil |   | 14  |         |

Phoenix Contact 2022 © - all rights reserved  
<http://www.phoenixcontact.com>



**SCATTERGOOD  
& JOHNSON LTD**  
ELECTRICAL ENGINEERING & FLUID CONTROL DISTRIBUTORS

Est.1899

At Scattergood & Johnson Ltd, we pride ourselves on being a technical distributor to specialist industries.

Working with a range of quality product manufacturers across a number of specialist markets, we are not your average 'box shifter' - we are your technical and supply chain partner.

We fully support every product we sell - for free! Our internal team and external sales engineers can answer any product or application question, no matter the complexity.

Backing up this technical ability is a range of 50,000+ products available from stock for nationwide next day delivery (same day if required!), or you can collect what you need from any of our trade counters around the UK.

Select your specialist interest below to learn more about how we can help.



Online, In Branch and On the Road - Scattergood & Johnson Ltd, there when you need us.

**[www.scatts.co.uk](http://www.scatts.co.uk)**