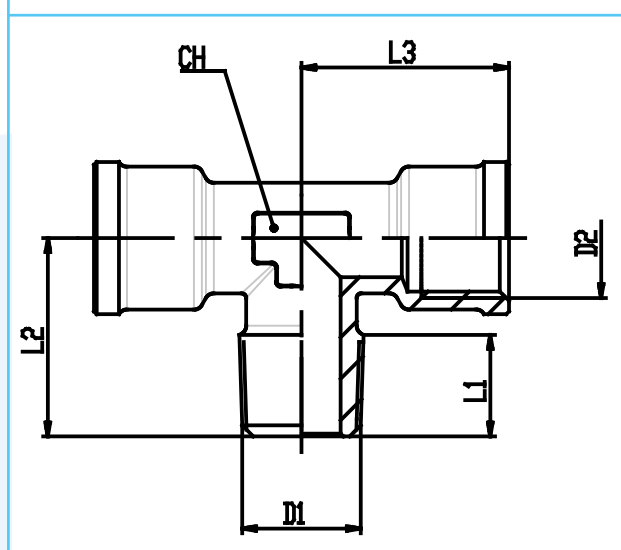


<b>Material:</b>	Brass Nickel Plated	
<b>Working Temperature:</b>	-40 ÷ 150	C°
<b>Working Temperature:</b>	-40 ÷ 302	F°
<b>Working Pressure (max):</b>	60	bar
<b>Working Pressure (max):</b>	870	psi
<b>Vacuum:</b>		kPa
<b>Vacuum:</b>		Hg
<b>Conformity:</b>	RoHS	

<b>Conformity:</b>	
<b>Conformity:</b>	
<b>Conformity:</b>	
<b>Conformity:</b>	
<b>Application</b>	Pneumatic, hydraulic and oleodynamic circuits

## RA24

### Male-female stud tee



## RA24

## 3D

CODE	TYPE	D1	D2	L1	L1IN	L2	L2IN	L3	L3IN	CH	G	OZ	WTF	WPP
5140001	RA24 18 18	R1/8	G1/8	8.1	.319	17	.669	18.5	.728	10	18.7	.660	-40 ÷ 302	870
5140002	RA24 14 14	R1/4	G1/4	11	.433	21.5	.846	22.5	.886	12	33.5	1.182	-40 ÷ 302	870
5140003	RA24 38 38	R3/8	G3/8	12	.472	24.5	.965	25.5	1.004	15	57.7	2.035	-40 ÷ 302	870
5140004	RA24 12 12	R1/2	G1/2	14	.551	29.5	1.161	30	1.181	19	96.4	3.400	-40 ÷ 302	870
5140005	RA24 34 34	R3/4	G3/4	17	.669	34.5	1.358	35.5	1.398	22	176.7	6.233	-40 ÷ 302	870
5140006	RA24 1" 1"	R1"	G1"	19	.748	40.5	1.594	40.5	1.594	28	296.8	10.469	-40 ÷ 302	870



**SCATTERGOOD  
& JOHNSON LTD**  
ELECTRICAL ENGINEERING & FLUID CONTROL DISTRIBUTORS

Est.1899

At Scattergood & Johnson Ltd, we pride ourselves on being a technical distributor to specialist industries.

Working with a range of quality product manufacturers across a number of specialist markets, we are not your average 'box shifter' - we are your technical and supply chain partner.

We fully support every product we sell - for free! Our internal team and external sales engineers can answer any product or application question, no matter the complexity.

Backing up this technical ability is a range of 50,000+ products available from stock for nationwide next day delivery (same day if required!), or you can collect what you need from any of our trade counters around the UK.

Select your specialist interest below to learn more about how we can help.



Online, In Branch and On the Road - Scattergood & Johnson Ltd, there when you need us.

**[www.scatts.co.uk](http://www.scatts.co.uk)**