

## Applications:

- Designed to meet the requirement for distribution and lighting junction boxes
- Available in 13 sizes with standard finishes of painted or 316L stainless steel, together with the high IP rating, make these enclosures suitable for all environmental conditions
- Stainless steel versions are particularly recommended for use in marine or other corrosive environments

## Certifications and compliances:

- Class I, Division 2, Groups A, B, C, D<sup>A</sup>
- cULus to UL50/C22.2 No. 94-M91
- NEMA Type 3S, 4 (painted steel\*), NEMA Type 4X (stainless steel), NEMA Type 6; IP66
- UL Listed E115376 (Ordinary Location)
- IECEx and ATEX component certificate – BVS13ATEXE015U and IECEx BVS 13.0025U
- 2G Ex eb IIC Gb or 2D Ex tb IIIC Db
- TR-CU and EAC certified

## S-TB-T terminal boxes:

S-TB enclosures are available assembled as custom configured and certified terminal boxes. Options include custom entries, cable glands and plugs with built-in terminals (Ex-e and Ex-i) and other equipment. Contact factory for ordering details.

### Standards:

- IEC/EN 60079-0
- IEC/EN 60079-7
- IEC/EN 60079-31
- IEC/EN 60529

### Certificates:

- BVS16 ATEX-E-096X
- IECEx BVS 16.0062X
- RU\_C-DE.AA87.B.00885

### Ambient temperatures:

- -55<sup>B</sup>/-40°C up to +40°C (T6 and maximum surface temperature of T80°C)
- -55<sup>B</sup>/-40°C up to +55°C (T5 and maximum surface temperature of T95°C)
- -55<sup>B</sup>/-40°C up to +65/70/80/100/110°C (with temperature class T4 and maximum surface temperature of T120°C)

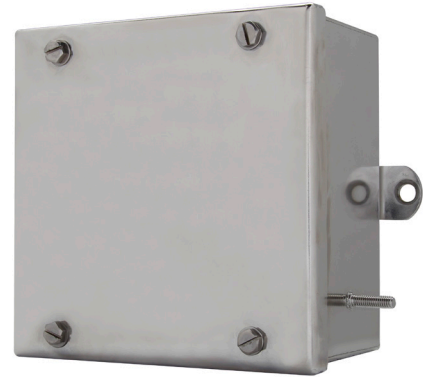
### Materials:

- Equipment available in 316L stainless steel enclosures

### Electrical ratings:

- Rated voltage up to 690V AC/DC; rated current up to 400A; conductor cross-sections up to 240mm<sup>2</sup>

**Note:** Ambient temperature range depends on ratings of built-in components.



### Markings:

- ATEX and IECEx: Ex eb IIC T6/5/4 Gb; Ex tb IIIC T80/95/120°C Db or Ex tb IIIC T80/95/120°C
- EAC CU TR: 1Ex e IIC T6/T5 Gb X or Ex tb IIIC T80/95/120°C Db X
- NEC 500: Class I, Division 2, Groups A, B, C, D<sup>A</sup>

## Technical specifications:

Description	Specification
Material	1.5mm thick stainless steel grades: 316L (1.4401); 304 (1.4301) or painted mild steel <sup>C</sup> (optional)
Finish	Stainless steel Painted Corrosion-resistant electro-polished surface RAL 7032 (gray)
Gasket	Foam-in-place silicone (standard); cut silicone (with gland plates)
Cover mounting	4 x M6 slotted, hexagon head captive screws
Grounding	STB121208-303020 M6 internal/external ground stud STB383822-604022 M10 internal/external ground stud
Box mounting	STB121208-252512 2 x external lugs, 0.315" (8mm) clearance holes STB163812-303020 4 x external lugs, 0.315" (8mm) clearance holes STB383822-604022 4 x external lugs, 0.433" (11mm) clearance holes
Equipment mounting	Mounting pillars or TAS 20 rails welded to base of enclosure (see Dimensions for details)
Ingress protection	All types IEC/EN 60529, IP66
Service temperature range	No gland plates -55°C to +120°C With gland plates -40°C to +120°C
Impact resistance	Minimum 7 J (Nm) to IEC/EN 60079-0, IK 10
Gland plates	STB383822-604022 Optional 3mm thick gland plates available in bottom, left, top and right configurations

<sup>A</sup>When terminal blocks or approved Class I, Division 2 devices are installed within the enclosure in accordance with NEC/CEC requirements. These enclosures are NOT explosionproof and will NOT contain an explosion. Installation of arcing and sparking devices which are not Class I, Division 2 rated or higher is NOT PERMITTED.

<sup>B</sup>Enclosures with gland plates are limited to -40°C.

<sup>C</sup>Painted mild steel not available with ATEX or IECEx rating.

\*Painted versions only available on demand.

# S-TB enclosures

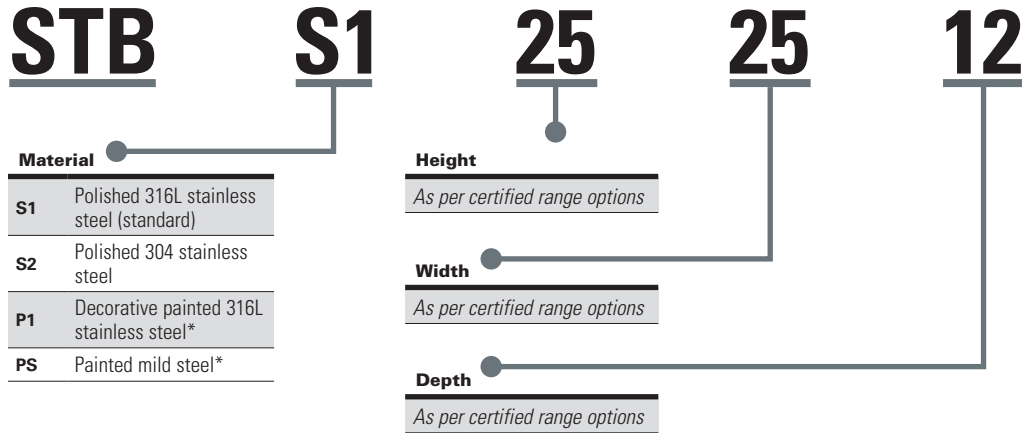
Cl. I, Div. 2, Groups A, B, C, D  
 NEMA Type 3S, 4 (painted steel\*)  
 NEMA Type 4X (stainless steel)  
 NEMA Type 6  
 IP66

IECEX/ATEX  
 TR-CU/EAC

2E

## Ordering information:

Part number example  
**STBS1252512**

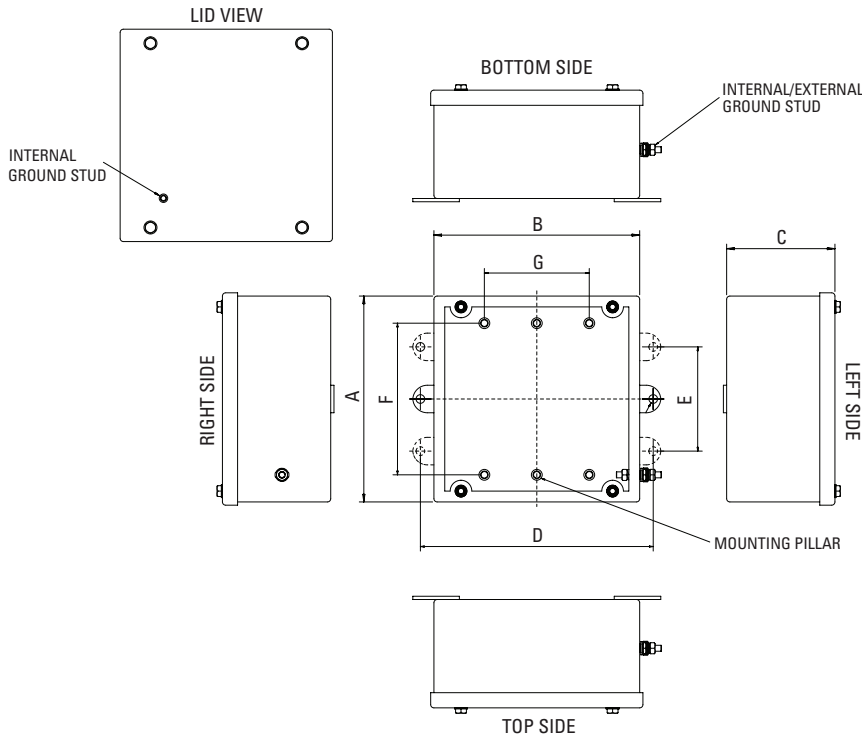


2E

ⓘ When terminal blocks or approved Class I, Division 2 devices are installed within the enclosure in accordance with NEC/CEC requirements. These enclosures are NOT explosionproof and will NOT contain an explosion. Installation of arcing and sparking devices which are not Class I, Division 2 rated or higher is NOT PERMITTED.

\*Painted versions only available on demand.

## Dimensions:



Short name	Type	Height (A) in. (mm)	Width (B) in. (mm)	Depth (C) in. (mm)	Horizontal mounting feet external fixing centers			Internal mounting centers			Weight lbs. (kg.)
					Horizontal (D) in. (mm)	Vertical (E) in. (mm)	Mtg. foot qty.	Vertical pitch (F) in. (mm)	Horizontal pitch (G) in. (mm)	Mounting pillar quantity <sup>Ⓔ</sup>	
STB 1	STB 12 12 08	4.72 (120)	4.72 (120)	3.15 (80)	5.71 (145)	N/A	2	2.76 (70)	0.00 (0)	2	3.09 (1.40)
STB 1.1	STB 15 12 08	5.91 (150)	4.72 (120)	3.15 (80)	5.71 (145)	N/A	2	3.94 (100)	0.00 (0)	2	3.50 (1.59)
STB 2	STB 15 15 09	5.91 (150)	5.91 (150)	3.54 (90)	6.89 (175)	N/A	2	3.94 (100)	0.00 (0)	2	4.19 (1.90)
STB 2.1	STB 19 15 09	7.48 (190)	5.91 (150)	3.54 (90)	6.89 (175)	N/A	2	5.51 (140)	0.00 (0)	2	5.40 (2.45)
STB 3	STB 19 19 10	7.48 (190)	7.48 (190)	3.94 (100)	8.46 (215)	N/A	2	5.51 (140)	0.00 (0)	2	6.61 (3.00)
STB 4	STB 25 25 12	9.84 (250)	9.84 (250)	4.72 (120)	10.83 (275)	N/A	2	7.09 (180)	0.00 (0)	TAS20	8.16 (3.70)
STB 5	STB 16 38 12	6.30 (160)	14.96 (380)	4.72 (120)	15.94 (405)	3.15 (80)	4	0.00 (0)	11.81 (300)	TAS20	8.14 (3.69)
STB 6	STB 25 40 13	9.84 (250)	15.75 (400)	5.12 (130)	16.73 (425)	5.91 (150)	4	7.09 (180)	0.00 (0)	TAS20	11.80 (5.35)
–	STB 30 30 20	11.81 (300)	11.81 (300)	7.87 (200)	12.80 (325)	9.06 (230)	4	9.06 (230)	0.00 (0)	TAS20	14.54 (6.59)
STB 7	STB 38 38 22	14.96 (380)	14.96 (380)	8.66 (220)	17.13 (435)	9.84 (250)	4	11.81 (300)	11.81 (300)	4	18.70 (8.48)
STB 8	STB 40 60 22	15.75 (400)	23.62 (600)	8.66 (220)	25.83 (656)	10.39 (264)	4	12.60 (320)	20.47 (520)	4	28.60 (12.97)
–	STB 34 75 15	13.39 (340)	29.53 (750)	5.91 (150)	30.51 (775)	10.63 (270)	4	10.24 (260)	13.19 (335)	6	22.22 (10.08)
STB 9	STB 60 40 22	23.62 (600)	15.75 (400)	8.66 (220)	17.95 (456)	18.27 (464)	4	20.47 (520)	12.60 (320)	4	28.60 (12.97)

**Note:** See technical data for mounting hole and ground stud sizes.

<sup>Ⓔ</sup>When terminal blocks or approved Class I, Division 2 devices are installed within the enclosure in accordance with NEC/CEC requirements. These enclosures are NOT explosionproof and will NOT contain an explosion. Installation of arcing and sparking devices which are not Class I, Division 2 rated or higher is NOT PERMITTED.

<sup>Ⓕ</sup>Mounting pillar pattern: 2 x M5, 10mm (H) – on vertical center line  
 TAS20 – two parallel rails at defined pitch about center  
 4 x M6, 25mm (H) – one in each corner at defined pitch about center  
 6 x M6, 25mm (H) – two on center and one in each corner at defined pitch from center

\*Painted versions only available on demand.

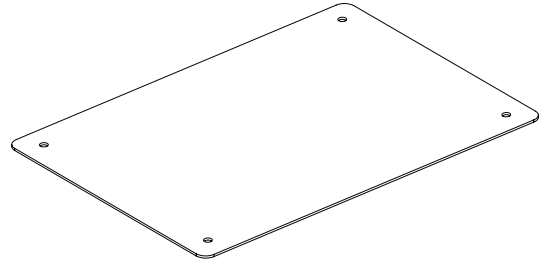
## Accessories (ordered separately):

### Mounting hardware

Sliding mounting nuts and screws for mounting assemblies or components to the support rail type TAS 20.

Description	Type	Cat. #
M5 screw for TS32/TS35	SFNS 5	ACCSFNM5

### Mounting plates



Enclosure size	Cat. # 2mm zinc coated steel	Cat. # 2mm 316L stainless steel
STB191910	STBZTMP1919	STBS1MP1919
STB252512	STBZTMP2525	STBS1MP2525
STB163812	STBZTMP1638	STBS1MP1638
STB254013	STBZTMP2540	STBS1MP2540
STB303020	STBZTMP3030	STBS1MP3030
STB383822	STBZTMP3838	STBS1MP3838
STB406022	STBZTMP4060	STBS1MP4060
STB347515	STBZTMP3475	STBS1MP3475
STB604022	STBZTMP6040	STBS1MP6040

2E

Ⓢ When terminal blocks or approved Class I, Division 2 devices are installed within the enclosure in accordance with NEC/CEC requirements. These enclosures are NOT explosionproof and will NOT contain an explosion. Installation of arcing and sparking devices which are not Class I, Division 2 rated or higher is NOT PERMITTED.

\*Painted versions only available on demand.



**SCATTERGOOD  
& JOHNSON LTD**  
ELECTRICAL ENGINEERING & FLUID CONTROL DISTRIBUTORS

Est.1899

At Scattergood & Johnson Ltd, we pride ourselves on being a technical distributor to specialist industries.

Working with a range of quality product manufacturers across a number of specialist markets, we are not your average 'box shifter' - we are your technical and supply chain partner.

We fully support every product we sell - for free! Our internal team and external sales engineers can answer any product or application question, no matter the complexity.

Backing up this technical ability is a range of 50,000+ products available from stock for nationwide next day delivery (same day if required!), or you can collect what you need from any of our trade counters around the UK.

Select your specialist interest below to learn more about how we can help.



Online, In Branch and On the Road - Scattergood & Johnson Ltd, there when you need us.

**[www.scatts.co.uk](http://www.scatts.co.uk)**