



ARRAN X

Ex ec LED Floodlight

The **Arran X** is a new, revolutionary, energy efficient floodlight designed to withstand the most hazardous environments, without sacrificing light quality, durability, or safety. With a robust clamshell design, including a captive swing barrel latch, that offers complete and unimpeded access to the wiring chamber, which allows for a quick and easy installation. Multiple optic types are also available, so that light distribution can be tailored to application need.

Intelligent battery backup is also available as an option which includes Self-Testing feature which runs a 30 second test every 30 days and a 90 or 180 minute test every twelve months. Bi-coloured LED indicator provides a visual fault detection and charging status. With a greater range of output and optic options the **Arran X** offers a complete package for all Zone 2 floodlight applications.



International Approvals

Mounting Options

Floodlight. Pole/Column. High Bay

Standard Specification

Arran X Ex ec LED Floodlight

Type of Protection	Ex ec (Increased Safety) Ex tb (Dust Protected Enclosure)
ATEX Classification	Group II Category 3 G Group II Category 2 D
Area Classification	Zone 2 and 21 areas to EN 60079-10-1 and EN 60079-10-2 with installation to EN60079-14
Certificate	Type Examination Certificate QPS 21 ATEX 7002X EU Type Examination Certificate QPS 21 ATEX 5004X IECEx Certificate of Conformity IECEx QPS 19.0031X
Coding	Ex ec IICT5/T4/T3 Gc, Ex tb IIIC T100°C/T135°C/T160°C Db, IP66 Refer to table for T Rating and Ambient
Enclosure	Marine grade Copper-Free Aluminium body with standard glass diffuser. Epoxy powder finish (Grey)
Geartray	Aluminium
Entry	2 x M20 cable entries
Termination	3 core 6mm ² max. conductor with looping
Installation	Stirrup mounting bracket
Control Gear	Electronic Driver
Optical Distribution	Wide beam
Colour Temperature (CCT)	5000K (Cool White)
Colour Rendering Index (Ra)	>70
Maintenance	Easy Install with clamshell splice box for unimpeded wiring access. Slotted screws
LED Lifetime @ 60°C Ambient	L70 > 96800hrs
System Life @ Ambient	100,000hrs @ 25°C; [excluding battery]
Battery	Lithium Iron Phosphate
Emergency Duration	1000 lumens for 90 minutes or 500 lumens for 3 hours
Impact Protection	IK10
Ingress Protection	IP66
Surge Protection	6kV & 4kV for 30L
Electrical Supply	120-277V AC 50/60Hz

Features

- ◆ **Easy Install** with clamshell splice box for unimpeded wiring access
- ◆ **Front access cover** with screwless mains terminals for easy termination.
- ◆ **Optics options** including Asymmetric, Narrow and Extra Wide
- ◆ **Intelligent battery backup** with built in self-monitoring and testing
- ◆ **Light weight** at 11.3kg

Std. Cat No.	Delivered Output	Power Consumption	T class	T°C (Dust)	Ambient °C	Weight
ARXC/07L/LE	7407 lm	63W	T5	100	-50 to +40	11.3kg
			T4	135	'-50 to +55	
			T3	160	'-50 to +65	
ARXC/10L/LE	10264 lm	91W	T5	100	-50 to +40	11.3kg
			T4	135	'-50 to +55	
			T3	160	'-50 to +65	
ARXC/14L/LE	14133 lm	118W	T5	100	-50 to +40	11.3kg
			T4	135	'-50 to +55	
			T3	160	'-50 to +65	
ARXC/20L/LE	18954 lm	178W	T4	135	-50 to +40	11.3kg
			T3	160	'-50 to +55	
ARXC/30L/LE	28423 lm	269W	T4	135	-50 to +40	11.3kg
			T3	160	'-50 to +55	
ARXC/07L/LE/EM	7407 lm	63W	T5	100	-20 to +40	12.03kg
			T4	135	'-20 to +50	
ARXC/14L/LE/EM	14133 lm	118W	T5	100	-20 to +40	12.03kg
			T4	135	'-20 to +50	

Standard fitting supplied without optics with a wide beam distribution

ARXC/07L/LE/EM 1000 lumens 90 minute emergency duration

ARXC/14L/LE/EM 1000 lumens 90 minute emergency duration

Glass lens as standard

Intelligent Battery Backup

- Self-diagnostics monitors LED luminaire status
- Self-Test feature automatically runs a 1 month and bi-yearly functional test
- LED indicator provides visible fault detection and charging status
- User initiated 1, or 90-minute system test feature
- 15 minute re-transfer delay
- Automatic unit transfer when there is an unintentional drop in voltage. (below 80% of nominal AC input voltage)

Options - Suffix to Catalogue No.

/M25	M25 cable entries	/3H	3 hour battery duration (500 lumens)
/AS	Asymmetric distribution	/3K	3000K (Warm White) LEDs
/N	Narrow Beam distribution	/ADE	Amber LED Turtle friendly*
/X	Extra Wide Beam distribution	/DM	DALI Dimmable driver**

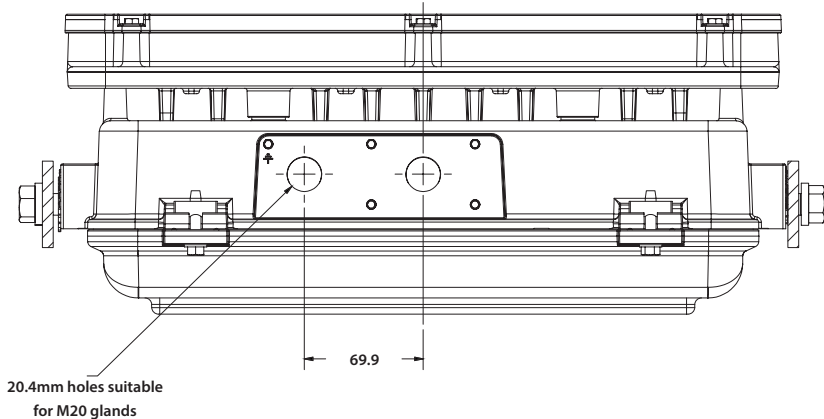
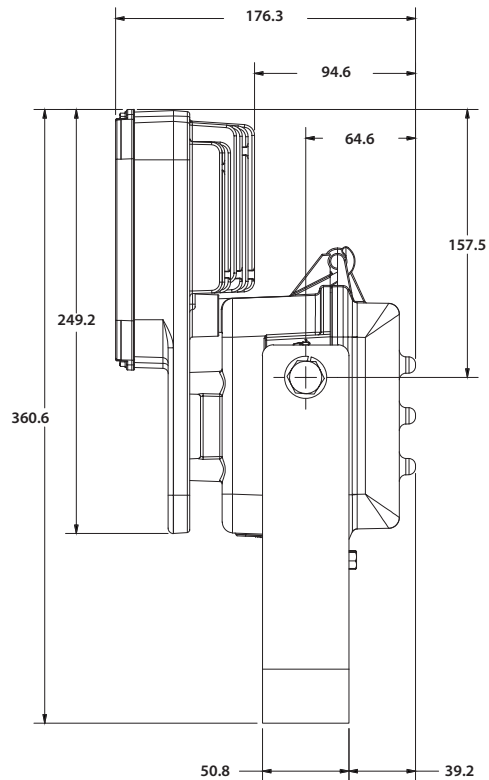
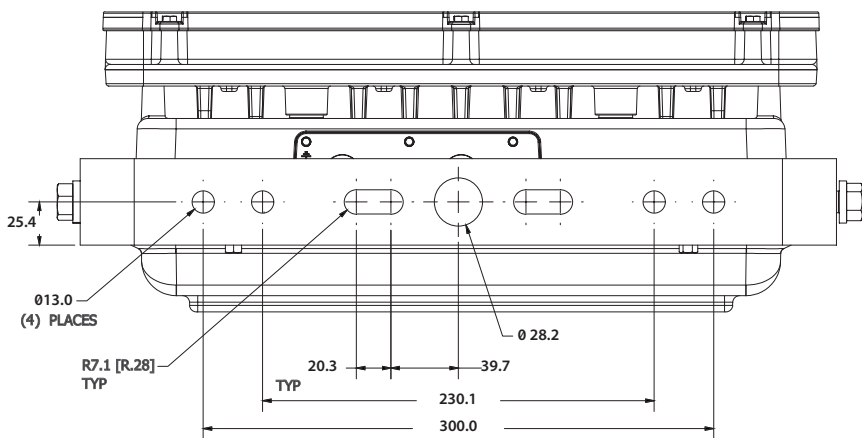
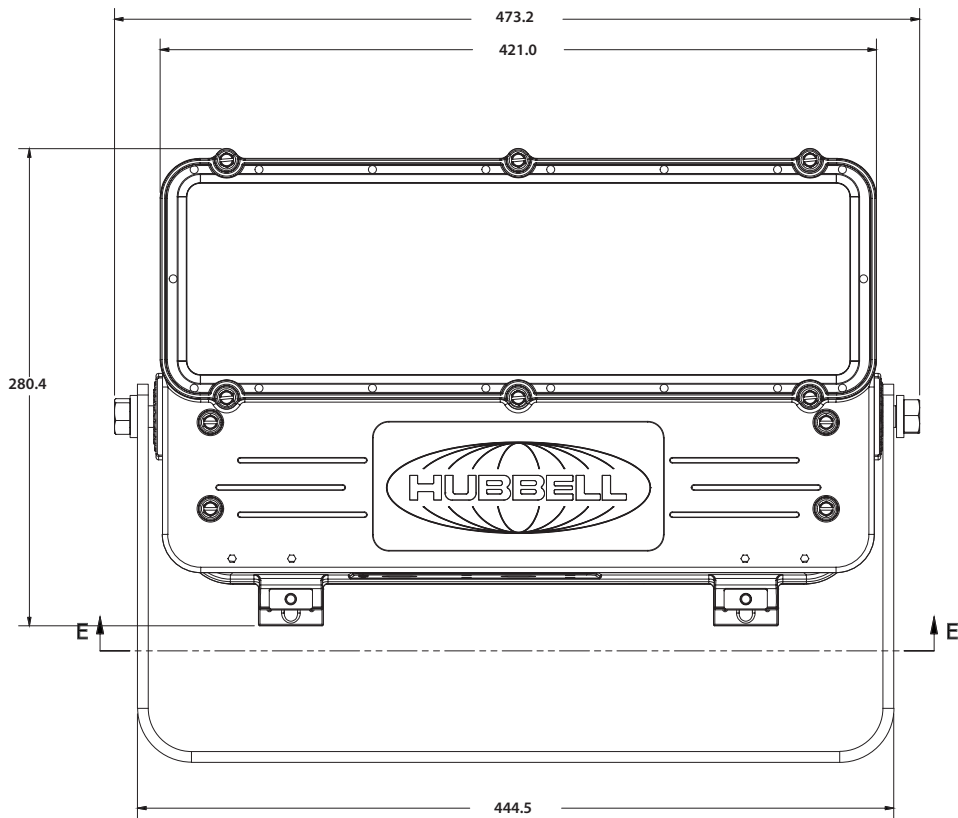
* only available with the 14L and 30L options

** Available up to the 20L option

Optics are not available on the 30L fitting

Accessories *order separately*

	Order Code
Wire Guard 316 Stainless Steel (not used with KFLX-DARK)	KFLX-GUARD
Anti Glare Shield Visor that blocks upward light when mounting at angles above 45° (not used with KFLX-GUARD)	KFLX-DARK
Pole Mounting Bracket Assembly (48-70mm Pole Diameter)	S2400-0002





**SCATTERGOOD
& JOHNSON LTD**
ELECTRICAL ENGINEERING & FLUID CONTROL DISTRIBUTORS

Est.1899

At Scattergood & Johnson Ltd, we pride ourselves on being a technical distributor to specialist industries.

Working with a range of quality product manufacturers across a number of specialist markets, we are not your average 'box shifter' - we are your technical and supply chain partner.

We fully support every product we sell - for free! Our internal team and external sales engineers can answer any product or application question, no matter the complexity.

Backing up this technical ability is a range of 50,000+ products available from stock for nationwide next day delivery (same day if required!), or you can collect what you need from any of our trade counters around the UK.

Select your specialist interest below to learn more about how we can help.



Online, In Branch and On the Road - Scattergood & Johnson Ltd, there when you need us.

www.scatts.co.uk