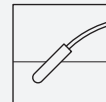




Float Switch

LFL1-*K-N-*****



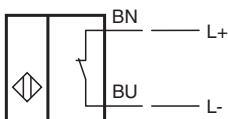
- Switch element: float switch with initiator, **mercury-free**
- Electrical connections in acc. with NAMUR for hazardous area
- Limit value detection for fluids
- Sleeve design: small diameter, mounting through G1 tap hole possible
- Ball design: high buoyancy



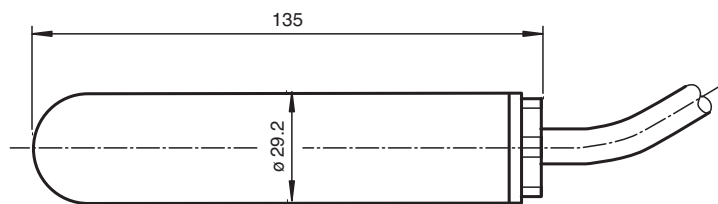
Function

The initiator (NC contact) is integrated in a PP float and is activated in the event of deviations from the horizontal position. The switching ball in the float, which moves along an axis, activates the switching event in the initiator inductively. The switch output provided by the initiator is a switch signal in accordance with EN 60947-5-6 (NAMUR).

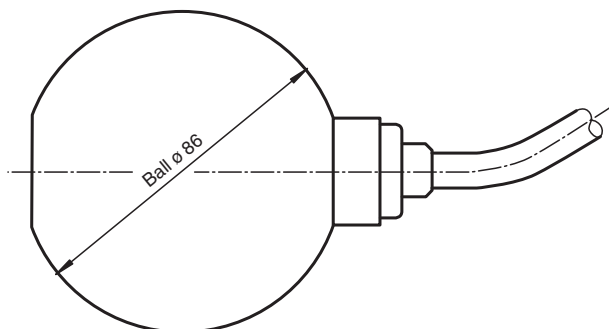
Application



Dimensions



Sleeve design LFL1-CK-N



Ball design LFL1-BK-N

Technical Data

General specifications		
Construction type	Proximity switch with operation ball	
Series	LFL1-**-N	
Supply		
Rated voltage	U_r	8.2 V \pm 2 V
Current consumption	< 1.0 mA unswitched (de-energized at the bottom), > 2.2 mA switched (floated up at the top)	
Reverse polarity protection	yes	
Output		
Connection	NAMUR acc. to EN 60947-5-6 , 2-wire	
Directive conformity		
Electromagnetic compatibility		
Directive 2014/30/EU	EN 60947-5-2:2007+A1:2012	
Conformity		
Degree of protection	IEC 60529:2001	
Function and system design		
Equipment architecture	A measuring system consists of a float switch LFL1-**-N and a transformer isolated barrier, e. g. KFD2-SR2-Ex1.W.	
Operating conditions		
Installation conditions		
Installation instructions	range of application and minimum length between mounting and float: - PVC version: \geq 50 mm (2 inch), preferred for water - PUR version: \geq 100 mm (4 inch), preferred for fuels, heating oils, oily fluids - CSM/CM version: \geq 100 mm (4 inch), preferred for many acids and lyes mounting: - The float switch is mounted either from sideways through a cable gland \geq G1A into the vessel or - by means of a counter weight or rods (e. g. float switch combination) from the top. The pivot of the cable should always be horizontal.	
Process conditions		
Process pressure (static pressure)	sleeve design: \leq 3 bar at 20 °C (68 °F) ball design: \leq 2 bar at 20 °C (68 °F)	
Density	sleeve design: \geq 0.8 g/cm ³ ball design: \geq 0.6 g/cm ³	
Ambient conditions		
Ambient temperature	-20 ... 70 °C (-4 ... 158 °F)	
Storage temperature	-25 ... 70 °C (-13 ... 158 °F)	
Altitude	\leq 2000 m above MSL	
Mechanical specifications		
Degree of protection	IP68	
Data for application in connection with hazardous areas		
EU-type examination certificate	TÜV 99 ATEX 1407	
Marking	Ⓔ II 2G Ex ia IIB T5 Gb	
Directive conformity		
Directive 2014/34/EU	EN 60079-0:2012+A11:2013 , EN 60079-11:2012	
Mechanical construction		
Material	float: PP (Polypropylene) cable: - PVC version: PVC cable, highly flexible (2 x 0.75 mm ²) - PUR version: PUR cable, highly flexible (2 x 0.50 mm ²) - CSM/CM version: CSM/CM cable (chlorinated polyethylene, (2 x 0.75 mm ²))	
Switching point	switch angle, measured against the horizontal: - upper switch point +15° \pm 5° - lower switch point -15° \pm 5°	
General information		
Supplementary information	Observe the certificates, declarations of conformity, instruction manuals, and manuals where applicable. For information see www.pepperl-fuchs.com .	
Accessories		

Release date: 2022-10-05 Date of issue: 2022-10-05 Filename: t3009_eng.pdf

Refer to "General Notes Relating to Pepperl+Fuchs Product Information".

Pepperl+Fuchs Group
www.pepperl-fuchs.comUSA: +1 330 486 0002
pa-info@us.pepperl-fuchs.comGermany: +49 621 776 2222
pa-info@de.pepperl-fuchs.comSingapore: +65 6779 9091
pa-info@sg.pepperl-fuchs.com

PEPPERL+FUCHS

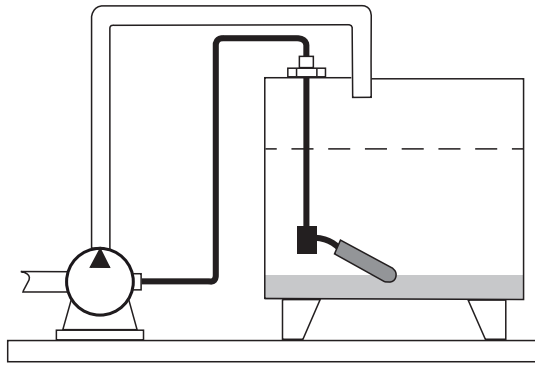
Technical Data

Designation

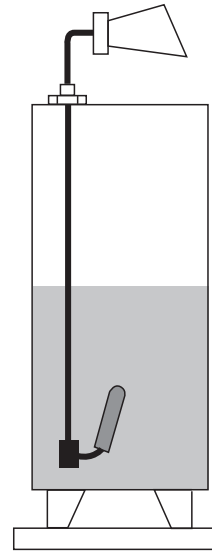
- LFL-Z231, counter nut, G1A, PVC
- LFL-Z32, counter weight, grey cast iron with plastic coating (Polycarbonate)
- LFL-Z33, counter weight, grey cast iron with ECTFE coating (Halar)
- LFL-Z131, gland screw connection G1A, PVC
- LFL-Z132, gland screw connection G1A, brass
- LFL-Z161, gland screw connection G2A, PVC
- LFL-Z431, gland screw connection 1 NPT, PVC
- LFL-Z461, gland screw connection 2 NPT, PVC

Application

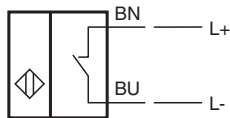
Level control via pump



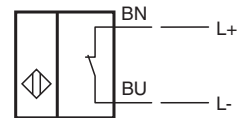
Level message via switching signal



Minimum fail safe mode connection



Maximum fail safe mode connection



Mounting

Mount the float switch in the following way:

- Insert the float switch into the tank through a tapped hole G1A.
- Screw the float switch with the gland screw connection G1A.
- If it is installed from above, use the counter weight LFL-Z32 or LFL-Z33 for mounting.



The fulcrum of the cable should always be horizontal.

The cable length between the fixture and the floating body is dependent on the cable type.

When using the counter weight, place an extra strain relief (e. g. a knot in the cable) behind the gland screw connection – on the outside of the tank.



Users should take appropriate precautions when using accessories in potentially hazardous areas.

Float Switch

LFL1-*K-N-*****



The counter weights LFL-Z32 and LFL-Z33 must not be used in hazardous area.

Type Code

This overview does not mark options which are mutually exclusive.
Option with * = on request/in preparation

Device	
LFL	Float switch
Switching element	
1	Switching contact with switching ball
Float	
B	Ball
C	Sleeve
Float material	
K	Plastic PP
Electrical output	
N	NAMUR acc. to DIN EN 60947-5-6
Cable material	
CSM	CSM/CM
PUR	PUR
PVC	PVC
Cable length	
3	3 m
5	5 m
6	6 m
10	10 m

Release date: 2022-10-05 Date of issue: 2022-10-05 Filename: t3009_eng.pdf

Refer to "General Notes Relating to Pepperl+Fuchs Product Information".

Pepperl+Fuchs Group
www.pepperl-fuchs.com

USA: +1 330 486 0002
pa-info@us.pepperl-fuchs.com

Germany: +49 621 776 2222
pa-info@de.pepperl-fuchs.com

Singapore: +65 6779 9091
pa-info@sg.pepperl-fuchs.com

 **PEPPERL+FUCHS**



**SCATTERGOOD
& JOHNSON LTD**
ELECTRICAL ENGINEERING & FLUID CONTROL DISTRIBUTORS

Est.1899

At Scattergood & Johnson Ltd, we pride ourselves on being a technical distributor to specialist industries.

Working with a range of quality product manufacturers across a number of specialist markets, we are not your average 'box shifter' - we are your technical and supply chain partner.

We fully support every product we sell - for free! Our internal team and external sales engineers can answer any product or application question, no matter the complexity.

Backing up this technical ability is a range of 50,000+ products available from stock for nationwide next day delivery (same day if required!), or you can collect what you need from any of our trade counters around the UK.

Select your specialist interest below to learn more about how we can help.



Online, In Branch and On the Road - Scattergood & Johnson Ltd, there when you need us.

www.scatts.co.uk