

# Distribution block - PTFIX 10/6X4-SILED 24 (5X20)



1172142

<https://www.phoenixcontact.com/gb/products/1172142>

Please be informed that the data shown in this PDF document is generated from our Online Catalog. Please find the complete data in the user documentation. Our General Terms of Use for Downloads are valid.



Distribution block, fuse type: G / 5 x 20, nom. voltage: 24 V, nominal current: 6.3 A, connection method: Push-in connection, Load contact, Rated cross section: 4 mm<sup>2</sup>, cross section: 0.2 mm<sup>2</sup>-6 mm<sup>2</sup>, connection method: Push-in connection, Line contact, Rated cross section: 16 mm<sup>2</sup>, cross section: 0.5 mm<sup>2</sup>- 16 mm<sup>2</sup>, mounting type: for snapping onto a DIN rail adapter, Direct mounting with flange, color: black

## Commercial Data

Item number	1172142
Packing unit	8 pc
Minimum order quantity	8 pc
Sales Key	BEA135
Product Key	BEA135
GTIN	4063151196585
Weight per Piece (including packing)	80 g
Weight per Piece (excluding packing)	48.133 g
Customs tariff number	85369095
Country of origin	PL

# Distribution block - PTFIX 10/6X4-SILED 24 (5X20)



1172142

<https://www.phoenixcontact.com/gb/products/1172142>

## Technical Data

### Notes

#### General

Note	
	The current is determined by the fuse used, the voltage by the fuse or selected light indicator.
	The maximum load current of a single clamping unit must not be exceeded.
	For power distribution applications, IEC 60364-4-43:2008; modified + corrigendum Okt. 2008 (DIN VDE 0100-430:2010-10) section 433.2 ff must be observed!

### Product properties

Product type	Distributor terminal block
Number of connections	7
Number of rows	1

#### Insulation characteristics

Overvoltage category	III
Degree of pollution	3

### Electrical properties

Rated surge voltage	8 kV
Maximum power dissipation for nominal condition	1.02 W
Fuse	G / 5 x 20
Maximum power dissipation	max. 1.6 W (with single arrangement of the fuse terminal block in the event of overload)
	max. 1.6 W (With interconnected arrangement of several fuse terminal blocks in the event of overload)
	max. 4 W (with single arrangement of the fuse terminal block in the event of a short-circuit)
	max. 2.5 W (With interconnected arrangement of several fuse terminal blocks in the event of a short-circuit)

### Connection data

Number of connections per level	7
---------------------------------	---

#### Load contact

Stripping length	10 mm ... 12 mm
Internal cylindrical gage	A4
Connection in acc. with standard	IEC 60947-7-3
Conductor cross section solid	0.2 mm <sup>2</sup> ... 6 mm <sup>2</sup>
Cross section AWG	24 ... 10 (converted acc. to IEC)
Conductor cross section flexible	0.2 mm <sup>2</sup> ... 4 mm <sup>2</sup>
Conductor cross section, flexible [AWG]	24 ... 12 (converted acc. to IEC)
Flexible conductor cross section flexible (ferrule, w/o plastic sleeve)	0.2 mm <sup>2</sup> ... 0.4 mm <sup>2</sup>

## Distribution block - PTFIX 10/6X4-SILED 24 (5X20)



1172142

<https://www.phoenixcontact.com/gb/products/1172142>

Flexible conductor cross section (ferrule with plastic sleeve)	0.2 mm <sup>2</sup> ... 4 mm <sup>2</sup>
2 conductors with the same cross section, flexible, with TWIN ferrule with plastic sleeve	0.5 mm <sup>2</sup> ... 1 mm <sup>2</sup>
Nominal current	6.3 A (the current is determined by the fuse used)
Maximum load current	6.3 A (with 4 mm <sup>2</sup> conductor cross section)
Maximum total current	37.8 A (The maximum load current of the individual terminal point must not be exceeded.)
Nominal voltage	24 V (the voltage is determined by the light indicator.)
Nominal cross section	4 mm <sup>2</sup>

## Line contact

Stripping length	12 mm ... 14 mm
Conductor cross section solid	0.5 mm <sup>2</sup> ... 16 mm <sup>2</sup>
Cross section AWG	20 ... 6 (converted acc. to IEC)
Conductor cross section flexible	0.5 mm <sup>2</sup> ... 10 mm <sup>2</sup>
Conductor cross section, flexible [AWG]	20 ... 8 (converted acc. to IEC)
Flexible conductor cross section flexible (ferrule, w/o plastic sleeve)	0.5 mm <sup>2</sup> ... 10 mm <sup>2</sup>
Flexible conductor cross section (ferrule with plastic sleeve)	0.5 mm <sup>2</sup> ... 10 mm <sup>2</sup>
2 conductors with the same cross section, flexible, with TWIN ferrule with plastic sleeve	0.5 mm <sup>2</sup> ... 4 mm <sup>2</sup>
Nominal current	37.8 A
Maximum load current	37.8 A (with 10 mm <sup>2</sup> conductor cross section)
Maximum total current	The maximum load current of the individual terminal point must not be exceeded.
Nominal cross section	16 mm <sup>2</sup>

## Load contact Connection cross sections directly pluggable

Conductor cross section solid	0.5 mm <sup>2</sup> ... 6 mm <sup>2</sup>
Flexible conductor cross section flexible (ferrule, w/o plastic sleeve)	0.5 mm <sup>2</sup> ... 4 mm <sup>2</sup>
Flexible conductor cross section (ferrule with plastic sleeve)	0.5 mm <sup>2</sup> ... 4 mm <sup>2</sup>

## Line contact Connection cross sections directly pluggable

Conductor cross section solid	1.5 mm <sup>2</sup> ... 10 mm <sup>2</sup>
Conductor cross section, solid [AWG]	16 ... 8 (converted acc. to IEC)
Flexible conductor cross section flexible (ferrule, w/o plastic sleeve)	1.5 mm <sup>2</sup> ... 10 mm <sup>2</sup>
Flexible conductor cross section (ferrule with plastic sleeve)	1.5 mm <sup>2</sup> ... 10 mm <sup>2</sup>

## Dimensions

Width	87.8 mm
Height	35.4 mm
Length	28.6 mm

## Material specifications

Color	black
Flammability rating according to UL 94	V0

## Distribution block - PTFIX 10/6X4-SILED 24 (5X20)



1172142

<https://www.phoenixcontact.com/gb/products/1172142>

Insulating material group	I
Insulating material	PA
Static insulating material application in cold	-60 °C
Temperature index of insulation material (DIN EN 60216-1 (VDE 0304-21))	130 °C
Relative insulation material temperature index (Elec., UL 746 B)	130 °C
Fire protection for rail vehicles (DIN EN 45545-2) R22	HL 1 - HL 3
Fire protection for rail vehicles (DIN EN 45545-2) R23	HL 1 - HL 3
Fire protection for rail vehicles (DIN EN 45545-2) R24	HL 1 - HL 3
Fire protection for rail vehicles (DIN EN 45545-2) R26	HL 1 - HL 3
Calorimetric heat release NFPA 130 (ASTM E 1354)	27,5 MJ/kg
Surface flammability NFPA 130 (ASTM E 162)	passed
Specific optical density of smoke NFPA 130 (ASTM E 662)	passed
Smoke gas toxicity NFPA 130 (SMP 800C)	passed

## Mechanical properties

## Mechanical data

Open side panel	No
-----------------	----

## Environmental and real-life conditions

## Oscillation/broadband noise

Specification	DIN EN 50155 (VDE 0115-200):2018-05
Spectrum	Service life test category 2, bogie-mounted
Frequency	$f_1 = 5 \text{ Hz}$ to $f_2 = 250 \text{ Hz}$
ASD level	6.12 (m/s <sup>2</sup> ) <sup>2</sup> /Hz
Acceleration	3.12g
Test duration per axis	5 h
Test directions	X-, Y- and Z-axis
Result	Test passed

## Shocks

Specification	DIN EN 50155 (VDE 0115-200):2018-05
Pulse shape	Half-sine
Acceleration	30g
Shock duration	18 ms
Number of shocks per direction	3
Test directions	X-, Y- and Z-axis (pos. and neg.)
Result	Test passed

## Ambient conditions

Ambient temperature (operation)	-60 °C ... 105 °C (max. short-term operating temperature RTI Elec.)
Ambient temperature (storage/transport)	-25 °C ... 60 °C (for a short time, not exceeding 24 h, -60 °C to +70 °C)
Ambient temperature (assembly)	-5 °C ... 70 °C

# Distribution block - PTFIX 10/6X4-SILED 24 (5X20)



1172142

<https://www.phoenixcontact.com/gb/products/1172142>

Ambient temperature (actuation)	-5 °C ... 70 °C
Permissible humidity (storage/transport)	30 % ... 70 %

## Standards and regulations

Connection in acc. with standard	IEC 60947-7-3
----------------------------------	---------------

## Mounting

Mounting type	for snapping onto a DIN rail adapter
	Direct mounting with flange

# Distribution block - PTFIX 10/6X4-SILED 24 (5X20)

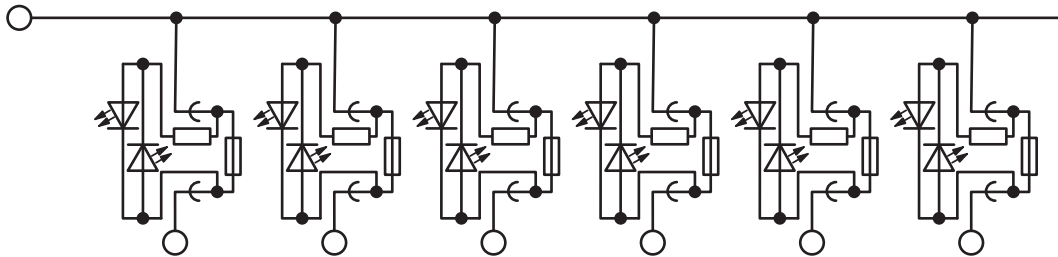


1172142

<https://www.phoenixcontact.com/gb/products/1172142>

## Drawings

Circuit diagram




## Distribution block - PTFIX 10/6X4-SILED 24 (5X20)





1172142


<https://www.phoenixcontact.com/gb/products/1172142>

## Approvals

 <b>CSA</b> Approval ID: 13631				
	Nominal Voltage $U_N$	Nominal Current $I_N$	Cross Section AWG	Cross Section $\text{mm}^2$
Use group B				
Output	300 V	6.3 A	24 - 10	-
Input	300 V	40 A	20 - 8	-

 <b>IECEE CB Scheme</b> Approval ID: NL-77613				
	Nominal Voltage $U_N$	Nominal Current $I_N$	Cross Section AWG	Cross Section $\text{mm}^2$
	500 V		-	-

 <b>cULus Recognized</b> Approval ID: E60425				
	Nominal Voltage $U_N$	Nominal Current $I_N$	Cross Section AWG	Cross Section $\text{mm}^2$
Use group B				
Output	300 V	6.3 A	24 - 10	-
Input	300 V	40 A	20 - 8	-
Use group F				
Output	250 V	6.3 A	24 - 10	-
Input	250 V	40 A	20 - 8	-

 <b>KEMA-KEUR</b> Approval ID: 71-121479				
	Nominal Voltage $U_N$	Nominal Current $I_N$	Cross Section AWG	Cross Section $\text{mm}^2$
	500 V		-	-

# Distribution block - PTFIX 10/6X4-SILED 24 (5X20)



1172142

<https://www.phoenixcontact.com/gb/products/1172142>

## Classifications

### ECLASS

ECLASS-11.0

27141116

### ETIM

ETIM 8.0

EC000899

### UNSPSC

UNSPSC 21.0

39121400

# Distribution block - PTFIX 10/6X4-SILED 24 (5X20)



1172142

<https://www.phoenixcontact.com/gb/products/1172142>

## Environmental Product Compliance

REACH SVHC	Lead 7439-92-1
China RoHS	Environmentally friendly use period: unlimited = EFUP-e
	No hazardous substances above threshold values

Phoenix Contact 2023 © - all rights reserved  
<https://www.phoenixcontact.com>

PHOENIX CONTACT Ltd  
Halesfield 13, Telford  
Shropshire, TF7 4PG  
01952 681700  
[info@phoenixcontact.co.uk](mailto:info@phoenixcontact.co.uk)



**SCATTERGOOD  
& JOHNSON LTD**  
ELECTRICAL ENGINEERING & FLUID CONTROL DISTRIBUTORS

Est.1899

At Scattergood & Johnson Ltd, we pride ourselves on being a technical distributor to specialist industries.

Working with a range of quality product manufacturers across a number of specialist markets, we are not your average 'box shifter' - we are your technical and supply chain partner.

We fully support every product we sell - for free! Our internal team and external sales engineers can answer any product or application question, no matter the complexity.

Backing up this technical ability is a range of 50,000+ products available from stock for nationwide next day delivery (same day if required!), or you can collect what you need from any of our trade counters around the UK.

Select your specialist interest below to learn more about how we can help.



Online, In Branch and On the Road - Scattergood & Johnson Ltd, there when you need us.

**[www.scatts.co.uk](http://www.scatts.co.uk)**