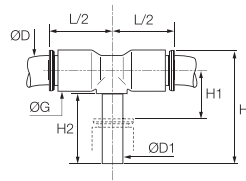


# Plug-In Fittings and Accessories

## 6388 Plug-In Branch Tee



Bio-based polymer, EPDM



| ØD  | ØD1 |                               | G  | H    | H1 | H2 | L/2 | kg    |
|-----|-----|-------------------------------|----|------|----|----|-----|-------|
| 1/4 | 1/4 | <a href="#">6388 56 00WP2</a> | 11 | 30.5 | 11 | 20 | 18  | 0.002 |
| 3/8 | 3/8 | <a href="#">6388 60 00WP2</a> | 16 | 42   | 12 | 25 | 25  | 0.008 |

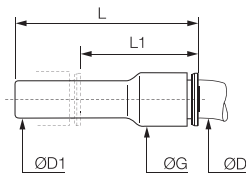
5/32" (4 mm) and 5/16" (8 mm) also available

For rotary applications, we recommend the use of a special grooved version, available upon request.

## 6366 Plug-In Reducer



Bio-based polymer, EPDM



| ØD | ØD1 |                               | G    | L    | L1   | kg    |
|----|-----|-------------------------------|------|------|------|-------|
| 4  | 6   | <a href="#">6366 04 06WP2</a> | 8.5  | 38   | 23.5 | 0.004 |
|    | 8   | <a href="#">6366 04 08WP2</a> | 8.5  | 38   | 19   | 0.004 |
| 6  | 8   | <a href="#">6366 06 08WP2</a> | 10.5 | 38   | 20   | 0.004 |
|    | 10  | <a href="#">6366 06 10WP2</a> | 10.5 | 39   | 17.5 | 0.002 |
| 8  | 10  | <a href="#">6366 08 10WP2</a> | 13.5 | 48.5 | 28.5 | 0.009 |
|    | 12  | <a href="#">6366 08 12WP2</a> | 13.5 | 48.5 | 24.5 | 0.004 |
| 10 | 12  | <a href="#">6366 10 12WP2</a> | 16   | 52   | 33.5 | 0.005 |
|    | 14  | <a href="#">6366 10 14WP2</a> | 16   | 53   | 33.5 | 0.005 |

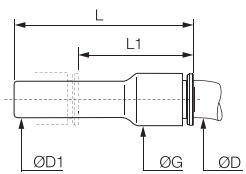
These part numbers are also available on request in WP3 = high volumes (number of parts per bag: 40, 50 or 100, depending on the diameters). Thread without pre-coating; the body swivels for positioning purposes.

For rotary applications, we recommend the use of a special grooved version, available upon request.

## 6366 Plug-In Reducer



Bio-based polymer, EPDM



| ØD   | ØD1  |                               | G    | L    | L1   | kg    |
|------|------|-------------------------------|------|------|------|-------|
| 1/4  | 5/16 | <a href="#">6366 56 08WP2</a> | 11   | 41   | 22.5 | 0.015 |
|      | 3/8  | <a href="#">6366 56 60WP2</a> | 11   | 41   | 20.5 | 0.002 |
| 5/16 | 3/8  | <a href="#">6366 08 60WP2</a> | 13.5 | 48.5 | 29   | 0.003 |
|      | 1/2  | <a href="#">6366 08 62WP2</a> | 16   | 48.5 | 22   | 0.007 |
| 3/8  | 1/2  | <a href="#">6366 60 62WP2</a> | 16   | 51   | 30   | 0.011 |

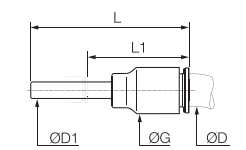
5/32" (4 mm) and 5/16" (8 mm) also available

For rotary applications, we recommend the use of a special grooved version, available upon request.

## 6368 Plug-In Increaser



Bio-based polymer, EPDM



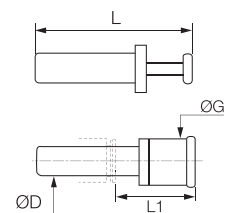
| ØD  | ØD1  |                               | G  | L  | L1   | kg    |
|-----|------|-------------------------------|----|----|------|-------|
| 3/8 | 5/16 | <a href="#">6368 60 08WP2</a> | 16 | 44 | 25.5 | 0.004 |

For rotary applications, we recommend the use of a special grooved version, available upon request.

## 6326 Blanking Plug



Bio-based polymer



| ØD |                               | G  | L  | L1   | kg    |
|----|-------------------------------|----|----|------|-------|
| 4  | <a href="#">6326 04 00WP2</a> | 6  | 30 | 15.5 | 0.001 |
| 6  | <a href="#">6326 06 00WP2</a> | 8  | 33 | 16.5 | 0.001 |
| 8  | <a href="#">6326 08 00WP2</a> | 10 | 35 | 17.5 | 0.002 |
| 10 | <a href="#">6326 10 00WP2</a> | 12 | 42 | 21   | 0.003 |
| 12 | <a href="#">6326 12 00WP2</a> | 14 | 45 | 22   | 0.004 |

These part numbers are also available on request in WP3 = high volumes (number of parts per bag: 40, 50 or 100, depending on the diameters).

**Working Temperature:** -10°C to +130°C for O.D. 4, 6 and 8 mm  
-10°C to +95°C for all other diameters



# SCATTERGOOD & JOHNSON LTD

ELECTRICAL ENGINEERING & FLUID CONTROL DISTRIBUTORS

Est.1899

At Scattergood & Johnson Ltd, we pride ourselves on being a technical distributor to specialist industries.

Working with a range of quality product manufacturers across a number of specialist markets, we are not your average 'box shifter' - we are your technical and supply chain partner.

We fully support every product we sell - for free! Our internal team and external sales engineers can answer any product or application question, no matter the complexity.

Backing up this technical ability is a range of 50,000+ products available from stock for nationwide next day delivery (same day if required!), or you can collect what you need from any of our trade counters around the UK.

Select your specialist interest below to learn more about how we can help.



Online, In Branch and On the Road - Scattergood & Johnson Ltd, there when you need us.

# [www.scatts.co.uk](http://www.scatts.co.uk)