

RING TONGUE TERMINAL, PRE-INSULATED WITH POLYCARBONATE, FOR COPPER CONDUCTORS, HALOGEN FREE



Features

TECHNICAL INFORMATION

Minimum operating temperature	-20 °C
Maximum operating temperature	115 °C
Threshold of operating temperature for short periods	130 °C
Spy hole	No
Narrow connection	No
Bend angle of the connection	0 °
Number of holes on the palm	1
Barrel reinforcement ring	No
Markings found	marchio di fabbrica
Reference standard	UL 486A-486B
Conditions of use	statico, al chiuso
Type	singolo
Type of insulation	parziale
Easy insertion input	Yes
Self-extinguishing fire class according to UL 94	V0
Reinforced with anti-vibration collar	No

MATERIAL COMPOSITION AND TREATMENTS

Conductor body material	Electrolitic copper with purity above 99,95%
Minimum thickness of the surface coating of the conducting body	3 µm
Surface treatment of the conductor body	tin plating
Insulated cover material	Polycarbonate PC10500AC
Annealing	Yes
Internal surface of the barrel	knurled
Halogen free	Yes

WEIGHT AND DIMENSIONS

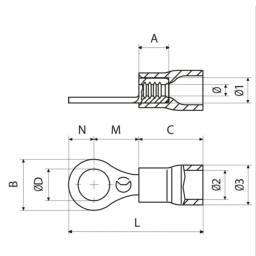
Center distance between holes	0 mm
-------------------------------	------

LOGISTIC

Type of packaging	; box
Unit in minimal packaging	100 PCE
Minimum order quantity	100 PCE
Customs code	85369010

CLASSIFICATION AND DATA ORDERING

ETIM Class 7	Solderless copper terminals for copper conductors [EC001052]
Manufactured in	Italy



VP-M		Insulated cover color Green		Range of cable cross section 0.2 ÷ 0.5 mm²												
tipo	Screw diameter	ØD [mm]	B [mm]	N [mm]	M [mm]	I [mm]	L [mm]	Gross weight [g]	A [mm]	C [mm]	Ø2 [mm]	Ø3 [mm]	Ø [mm]	Cable stripping length [mm]	Unit in standard packaging [pce]	
VP-M2	M2	2.2	5.6	2.8	4.5	8.7	17.5		4.6	10	3	4.4	1.2	4.6	4,000	
VP-M3	M3	3.2	5.6	2.8	4.5	8.7	17.5	0,367	4.6	10	3	4.4	1.2	4.6	4,000	
VP-M3.5	M3.5	3.7	5.6	2.8	4.5	8.7	17.5	0,325	4.6	10	3	4.4	1.2	4.6	4,000	
VP-M4	M4	4.3	7	3.5	6.5	10.7	20.2	0,415	4.6	10	3	4.4	1.2	4.6	4,000	
VP-M5	M5	5.3	7.8	3.9	7.1	11.3	21.2	0,401	4.6	10	3	4.4	1.2	4.6	4,000	
VP-M6	M6	6.4	9.4	4.7	8.1	12.3	23		4.6	10	3	4.4	1.2	4.6	4,000	

RP-M		Insulated cover color Rosso		Range of cable cross section 0.25 ÷ 1.5 mm²												
tipo	Screw diameter	ØD [mm]	B [mm]	N [mm]	M [mm]	I [mm]	L [mm]	Gross weight [g]	A [mm]	C [mm]	Ø2 [mm]	Ø3 [mm]	Ø [mm]	Cable stripping length [mm]	Unit in standard packaging [pce]	
RP-M2	M2	2.2	5.6	2.8	4.5	8.7	17.4	0,630	4.2	10.1	4	5.5	1.8	4.6	3,000	
RP-M3	M3	3.2	5.6	2.8	4.5	8.7	17.4	0,577	4.2	10.1	4	5.5	1.8	4.6	3,000	
RP-M3.5	M3.5	3.7	5.6	2.8	4.5	8.7	17.4	0,555	4.2	10.1	4	5.5	1.8	4.6	3,000	
RP-M3.5/1	M3.5	3.7	6.2	3.1	7.1	11.3	20.2	0,660	4.2	10.1	4	5.5	1.8	4.6	3,000	
RP-M4	M4	4.3	7	3.5	6.5	10.7	20.1	0,663	4.2	10.1	4	5.5	1.8	4.6	3,000	
RP-M4/3	M4	4.3	7.8	3.9	7.1	11.3	21.1	0,740	4.2	10.1	4	5.5	1.8	4.6	3,000	
RP-M5	M5	5.3	7.8	3.9	7.1	11.3	21.1	0,649	4.2	10.1	4	5.5	1.8	4.6	2,500	
RP-M6	M6	6.4	9.4	4.7	8.1	12.3	22.9	0,800	4.2	10.1	4	5.5	1.8	4.6	2,500	
RP-M6/1	M6	6.4	12	6	10.3	14.5	26.4	1,181	4.2	10.1	4	5.5	1.8	4.6	2,000	
RP-M7	M7	7.2	9.4	4.7	8.1	12.3	22.9	0,747	4.2	10.1	4	5.5	1.8	4.6	2,500	
RP-M8	M8	8.4	12	6	10.3	14.5	26.4	0,986	4.2	10.1	4	5.5	1.8	4.6	2,500	
RP-M10	M10	10.5	15.5	7.75	13.05	17.25	30.9	1,371	4.2	10.1	4	5.5	1.8	4.6	1,500	
RP-M12	M12	13	18	9	15.5	19.7	34.6	1,602	4.2	10.1	4	5.5	1.8	4.6	1,500	

BP-M		Insulated cover color Blue		Range of cable cross section 1.5 ÷ 2.5 mm²												
tipo	Screw diameter	ØD [mm]	B [mm]	N [mm]	M [mm]	I [mm]	L [mm]	Gross weight [g]	A [mm]	C [mm]	Ø2 [mm]	Ø3 [mm]	Ø [mm]	Cable stripping length [mm]	Unit in standard packaging [pce]	
BP-M2	M2	2.2	5.6	2.8	5	9.2	17.9		4.2	10.1	4.9	6.4	2.4	4.6	2,500	
BP-M3	M3	3.2	5.6	2.8	5	9.2	17.9	0,724	4.2	10.1	4.9	6.4	2.4	4.6	2,500	
BP-M3.5	M3.5	3.7	5.6	2.8	5	9.2	17.9	0,691	4.2	10.1	4.9	6.4	2.4	4.6	3,000	
BP-M3.5/1	M3.5	3.7	6.2	3.1	6.5	10.7	19.7	0,836	4.2	10.1	4.9	6.4	2.4	4.6	2,500	
BP-M4	M4	4.3	8	4	6.5	10.7	20.6	0,846	4.2	10.1	4.9	6.4	2.4	4.6	2,500	

tipo	Screw diameter	ØD [mm]	B [mm]	N [mm]	M [mm]	I [mm]	L [mm]	Gross weight [g]	A [mm]	C [mm]	Ø2 [mm]	Ø3 [mm]	Ø [mm]	Cable stripping length [mm]	Unit in standard packaging [pce]
BP-M5	M5	5.3	8	4	7.5	11.7	21.6	0,828	4.2	10.1	4.9	6.4	2.4	4.6	2,000
BP-M6	M6	6.4	9.4	4.7	8.6	12.8	23.4	0,923	4.2	10.1	4.9	6.4	2.4	4.6	2,000
BP-M6/1	M6	6.4	12	6	10.3	14.5	26.4	1,276	4.2	10.1	4.9	6.4	2.4	4.6	2,000
BP-M6/2	M6	6.4	8.4	4.2	5.4	9.6	19.7	0,712	4.2	10.1	4.9	6.4	2.4	4.6	2,500
BP-M7	M7	7.2	10	5	7.8	12	22.9	0,881	4.2	10.1	4.9	6.4	2.4	4.6	2,500
BP-M8	M8	8.4	12	6	10.3	14.5	26.4	1,111	4.2	10.1	4.9	6.4	2.4	4.6	1,500
BP-M10	M10	10.5	15.5	7.75	13.05	17.25	30.9	1,467	4.2	10.1	4.9	6.4	2.4	4.6	1,500
BP-M12	M12	13	18	9	15.5	19.7	34.6	1,712	4.2	10.1	4.9	6.4	2.4	4.6	1,000

GP-M Insulated cover color Yellow

tipo	Screw diameter	ØD [mm]	B [mm]	N [mm]	M [mm]	I [mm]	Range of cable cross section [mm ²]	L [mm]	Gross weight [g]	A [mm]	C [mm]	Ø2 [mm]	Ø3 [mm]	Ø [mm]	Cable stripping length [mm]	Unit in standard packaging [pce]
GP-M3	M3	3.2	8	4	8.1	14.5	4 ÷ 6	26.2	1,900	6.4	14.1	6.8	8.1	3.6	7	1,000
GP-M3.5	M3.5	3.7	8	4	8.1	14.5	4 ÷ 6	26.2	1,845	6.4	14.1	6.8	8.1	3.6	7	1,000
GP-M4	M4	4.3	9	4.5	8.1	14.5	4 ÷ 6	26.7	1,926	6.4	14.1	6.8	8.1	3.6	7	1,000
GP-M5	M5	5.3	9	4.5	8.1	14.5	4 ÷ 6	26.7	1,872	6.4	14.1	6.8	8.1	3.6	7	1,000
GP-M6	M6	6.4	11	5.5	11.1	17.5	0.25 ÷ 1.5	30.7	2,166	6.4	14.1	6.8	8.1	3.6	7	1,000
GP-M6/1	M6	6.4	11	5.5	8.1	14.5	16 ÷ 22	27.7	2,017	6.4	14.1	6.8	8.1	3.6	7	1,000
GP-M7	M7	7.2	11	5.5	11.1	17.5	4 ÷ 6	30.7	2,111	6.4	14.1	6.8	8.1	3.6	7	1,000
GP-M8	M8	8.4	13.6	6.8	12.1	18.5	4 ÷ 6	33	2,395	6.4	14.1	6.8	8.1	3.6	7	800
GP-M8/1	M8	8.4	11	5.5	8.1	14.5	4 ÷ 6	27.7	1,792	6.4	14.1	6.8	8.1	3.6	7	1,000
GP-M10	M10	10.5	13.6	6.8	12.1	18.5	4 ÷ 6	33	2,154	6.4	14.1	6.8	8.1	3.6	7	1,000
GP-M10/1	M10	10.5	15.5	7.75	13.85	20.25	4 ÷ 6	35.7	2,665	6.4	14.1	6.8	8.1	3.6	7	1,000
GP-M12	M12	13	19	9.5	15.1	21.5	4 ÷ 6	38.7	3,064	6.4	14.1	6.8	8.1	3.6	7	500
GP-M14	M14	15	21	10.5	16.1	22.5	4 ÷ 6	40.7	3,328	6.4	14.1	6.8	8.1	3.6	7	500
GP-M16	M16	17	24	12	17.1	23.5	16 ÷ 22	43.2	3,780	6.4	14.1	6.8	8.1	3.6	7	500

P03-M

tipo

P06-M

tipo

P1-M

tipo



Via Serenissima, 9 - 25135
Brescia - ITALY

© Copyright 2020 Cembre S.p.A.



SCATTERGOOD & JOHNSON LTD

ELECTRICAL ENGINEERING & FLUID CONTROL DISTRIBUTORS

Est.1899

At Scattergood & Johnson Ltd, we pride ourselves on being a technical distributor to specialist industries.

Working with a range of quality product manufacturers across a number of specialist markets, we are not your average 'box shifter' - we are your technical and supply chain partner.

We fully support every product we sell - for free! Our internal team and external sales engineers can answer any product or application question, no matter the complexity.

Backing up this technical ability is a range of 50,000+ products available from stock for nationwide next day delivery (same day if required!), or you can collect what you need from any of our trade counters around the UK.

Select your specialist interest below to learn more about how we can help.



Online, In Branch and On the Road - Scattergood & Johnson Ltd, there when you need us.

www.scatts.co.uk