



CODESYS Visualization L

The application-based license CODESYS Visualization M enables a CODESYS visualization with up to **4096** data points. This can be displayed as a WebVisu, as a TargetVisu or both.

Product description

CODESYS Visualization is an add-on product for the CODESYS Control SL product to equip it with a graphical user interface (visualization/HMI). The visualization can be used as WebVisu or TargetVisu, depending on the expansion stage of the device.

The CODESYS WebVisu opens up the possibility of displaying graphical user interfaces on display devices with HTML5-capable web browsers that are connected to a control device via a data network.

The CODESYS TargetVisu can display graphical user interfaces directly on the control panel of the control device, if the device in question has a display.

Performance classes Visualization

Performance classes	Number of data points
Visu S	128
Visu M	2048
Visu L	4096
Visu XL	8192
Visu XXL	unlimited

Data points are IEC variables used within the visualization. Complex elements like table or trend, use further criteria to calculate the number of necessary data points. The following licenses are available for CODESYS Visualization.

Base License

This license also acts as an upgrade license to upgrade from an already purchased application-based license (Base License) to a higher-performance license. The costs of the already purchased license (Base License) will be fully credited.

The CODESYS Visualization S license is already included in the runtime system license by default.

The Base License must already be installed on the system, otherwise the license will be rejected during installation.

Benefits of CODESYS Visualization

- Integrated in the CODESYS Development System, for the development of the visualization/HMI
- Development independently or together with the PLC application in a project
- Scalable projects by enabling any number of usable data points
- Simplified new creation of the application through guided project configuration
- Access to data in the control network via data sources
- Extensible library of elements from self-created visualizations with parameter interface
- Loading of the visualization directly from the development environment to the controller
- Display of all functions and elements available with CODESYS visualization, e.g.:
 - Alarm management
 - Trace and trend display
 - User management
 - Recipe management
 - Visualization styles
 - Multi-axiality
 - Integration of HTML5 Controls in the CODESYS WebVisu

Editor in CODESYS

Specialized HMI perspectives with typical perspectives – can be switched at any time for application developers

Integrated visualization editor

Extensive library with ready-made elements

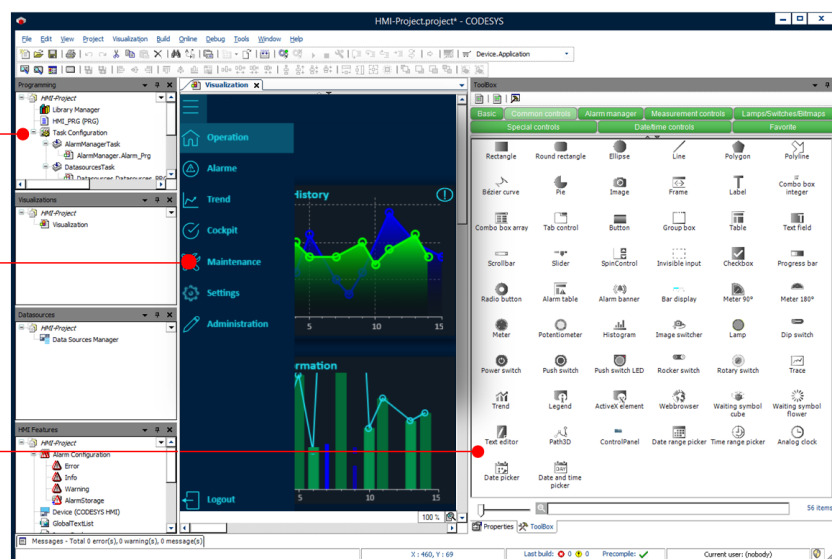


Image 1: Working with the CODESYS visualization in the CODESYS Development System.

General information

Supplier:

CODESYS GmbH
 Memminger Strasse 151
 87439 Kempten
 Germany

Support:

Technical support is not included with this product. To receive technical support, please purchase a CODESYS Support Ticket.

<https://support.codesys.com>

Item:

CODESYS Visualization L

Item number:

2304000012

Sales/Source of supply:

CODESYS Store
<https://store.codesys.com>

Included in delivery:

- Package for the CODESYS Development System including CODESYS Control, license agreement, online help and device description
- License Key

System requirements and restrictions

Programming System	CODESYS Development System V3.5.19.10 or higher CODESYS Visualization V4.4.0.0 or higher
Runtime System	V4.9.0.0 or higher
Supported Platforms/ Devices	CODESYS Store runtime products for Windows and Linux Note: Use the project "Device Reader" to find out the supported features of your device. "Device Reader" is available for free in the CODESYS Store.
Additional Requirements	See license agreement. After installation, the user is responsible for implementing and checking the functionality of the combination of the software package and hardware according to device specifications. Note: The target visualization requires a display at the device and graphic libraries in the firmware

Restrictions

-

Licensing

Single device license: The license can be used on the target device/PLC on which the CODESYS runtime system is installed.

Licenses are activated on a software-based license container (soft container), which is permanently connected to the controller. Alternatively, the license can be stored on a CODESYS Key (USB dongle). By replugging the CODESYS Key, the license can be used on any other controller.

Note: In demo mode (no license for runtime and visualization), the software runs for two hours without a license. After that, a manual restart is required.

Required

Optional: CODESYS Key

Accessories

Note: Technical specifications are subject to change. Errors and omissions excepted. The content of the current online version of this document applies.

Creation date: 2023-08-07