



## SPARTAN SPZ-WL168 LED Zone 2/21/22 Linear Luminaire

# rayTEC®



Intelligent Emergency  
Variants








- ATEX and IEC Ex approved – Zone 2/21/22
- ABS approved
- Zone 1/21 and Zone 2/22 variants and C1D2 variants (UL/CSA) available
- Intelligent Emergency variants - up to 100% light output
- Retrofittable
- Ultra long life, high lumen output LED
- Easy installation, maintenance and inspection
- Wide operating temperature range -40° to +60°C
- 5 year warranty

The SPARTAN Linear range is designed specifically for use in new hazardous area installations or to retrofit existing fluorescent installations which require high performance, reliable, White-Light illumination. Housed in marine grade aluminium and using Raytec's field-proven, long-life LED technology, SPARTAN Linear is ATEX and IEC Ex approved for all Zone 2/21/22 applications (Zone 1/21 and Zone 2/22 variants also available). SPARTAN Linear's overall dimensions, fixing centres and gland entries are all compatible with traditional Ex n 2x36W fluorescent luminaires, so end users can upgrade to LED easily.

SPARTAN Linear is available as an intelligent emergency variant which self-tests the emergency battery to proactively monitor and maintain the overall health of the luminaire and provides class leading emergency performance. A unique modular design means key components are easily accessible, making inspection and maintenance quick and easy. SPARTAN uses thermal management technology which ensures the luminaire runs cool, providing up to 60% better heat dissipation compared to conventional lighting, allowing the product to operate for 10+ years while still delivering a high lumen output of 6,900 lumens.

# Intelligent Emergency - Self-testing Functions

LED Indication	Condition
	Battery charged and PSU OK
	Emergency mode activated
	Function Test
	Self-test
	Commissioning
	Fault - further troubleshooting required



Features	Benefits
Retrofitable	Easy Installation, matching the dimensions of traditional 2x36W fluorescent fittings, to provide an easy direct replacement Equivalent Output to a 2x36W fluorescent
Intelligent Emergency	Self-testing emergency battery which proactively monitors and maintains the overall health of the luminaire Easy inspection thanks to a tri-colour LED indicator
Modular Design	Both the LED and PSU modules are easily accessible for maintenance and inspection
Ultra-Powerful	High lumen output – up to 6,900 lumens Latest high power LED technology
Ultra-Reliable	Industry leading 5 year warranty Designed and manufactured in the UK to the highest standards including both ISO9001 & ISO14001 Advanced electronics and LED's protected by vibration resistant and waterproof potting compound Intelligent emergency with automatic self-testing
Ultra-Efficient	Thermal management technology delivers class leading energy efficiency Significant running and maintenance savings compared to traditional lighting technologies SMART access wiring system for safe and efficient installation, set-up and ongoing inspection
Support Services	Photometric files available (.ies & .ldt) Full Lighting Design Service Site specific Energy and Cost Saving Report available

## 5 YEAR WARRANTY

All Raytec luminaires are provided with an industry leading 5 year warranty and have an expected useful life in excess of 10 years



# Technical Specifications

## Certification

ATEX Rating:	ATEX and IEC Ex rated for Gas and Dust
Hazardous Area rating:	Zone 2 (Gas), Zone 21 and Zone 22 (Dust)
Certificates:	Zone 2 and 22: CML15ATEX4138 & IEC Ex CML 15.0068 Zone 21: CML16ATEX1130 & IECEx CML 16.0052
Gas (Zone 2):	II 3 G D Ex nA mc IIC T4 Gc Ta= -40°C to +60°C (-20°C to +50°C for emergency variants) (-40°C to +55°C for C1D2 variants)
Dust (Zone 21):	Ex tb IIIC T80°C Db Ta= -40°C to +60°C (-20°C to +50°C, T76°C for emergency variants) (-40°C to +55°C for C1D2 variants)
Dust (Zone 22):	Ex tc IIIC T80°C Dc Ta= -40°C to +60°C (-20°C to +50°C, T75°C for emergency variants) (-40°C to +55°C for C1D2 variants)
ABS Rating:	ABS Certificate # 20-1990083-PDA

## Electrical

Input:	110-254V 50/60Hz AC only Low voltage: 18-48V AC and 18-69V DC Extra low voltage: 12V AC/DC
Power:	Standard - 59W Emergency - 62W
Termination	Incoming terminal block suitable for looping 4 core 4mm <sup>2</sup> cable
Power Factor:	>0.95
Cable Entries	2xM20 cable entries at both ends, through wired as standard (other entries available upon request), dispatched complete with three ATEX/IEC Ex approved blanking plug.

## Optical

Lumen output on mains:	Up to 6,900 lm
LED type:	Platinum Elite SMT LEDs
Number of LEDs:	168 LEDs
CRI	80+
Colour Temperature:	6,000K+

## Mechanical/Environmental

Burning position:	Universal
IP rating:	IP66 & IP67
Temperature range:	-40°C to +60°C (-20°C to +50°C for emergency variants)
Weight:	Standard - 9kg (19.8lbs) Emergency - 10kg (22lbs)
Enclosure:	Marine grade aluminium epoxy powder coated, UV stabilised polycarbonate, all external fasteners and brackets are marine grade stainless steel
Unit Colour:	Dark Grey (RAL 7012) Emergency Cover - Red (RAL 3024)
Installation instructions:	Please see document 910-M-0284 at <a href="http://www.rayteclad.com">www.rayteclad.com</a>
Battery care instructions:	Please see document 0010-D-00001 at <a href="http://www.rayteclad.com">www.rayteclad.com</a>
Dimensions:	Emergency - 1414 x 108 x 174mm (55.7 x 4.3 x 6.9")
Mounting:	Via M8/M6 tapped holes. Various mounting arrangements available (please see product overview guide)

## Intelligent Emergency Battery Back-Up

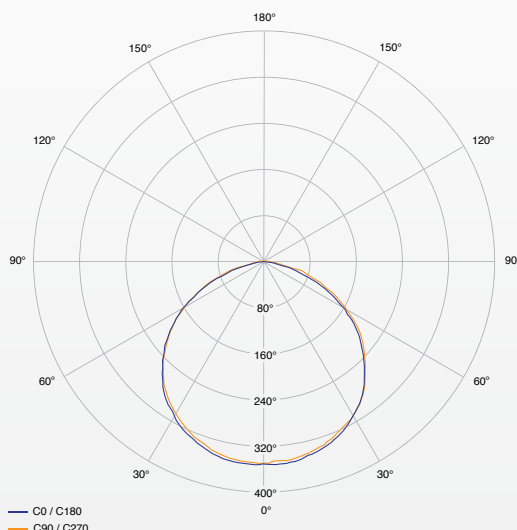
Function:	Self-testing intelligent emergency
System health indicator:	Tri-colour LED indicator
Emergency Duration:	Up to 3hrs @ 25% power Other options available
Emergency Battery:	Ni/Cd 12V
Emergency Charge Time:	20 hours

# Part Codes - Zone 2/21/22

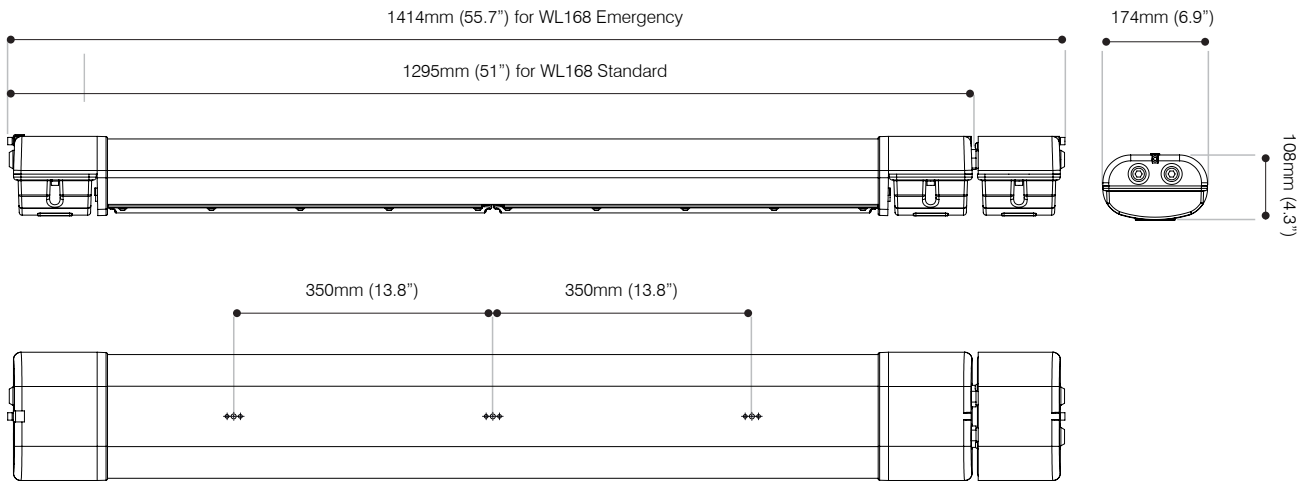
Part Codes	Description
SPZ-WL168-Z21	SPARTAN Zone 2 Linear, 168 LED, White-Light
SPZ-WL168-EMX25-Z21	SPARTAN Zone 2 Linear, 168 LED, White-Light, Intelligent Emergency Battery Backup

18-69V variants available, add -LV to the above codes  
12V variants available, add -ELV to the above codes  
EMX not available in -LV or -ELV  
Add -D to part code for diffused lens

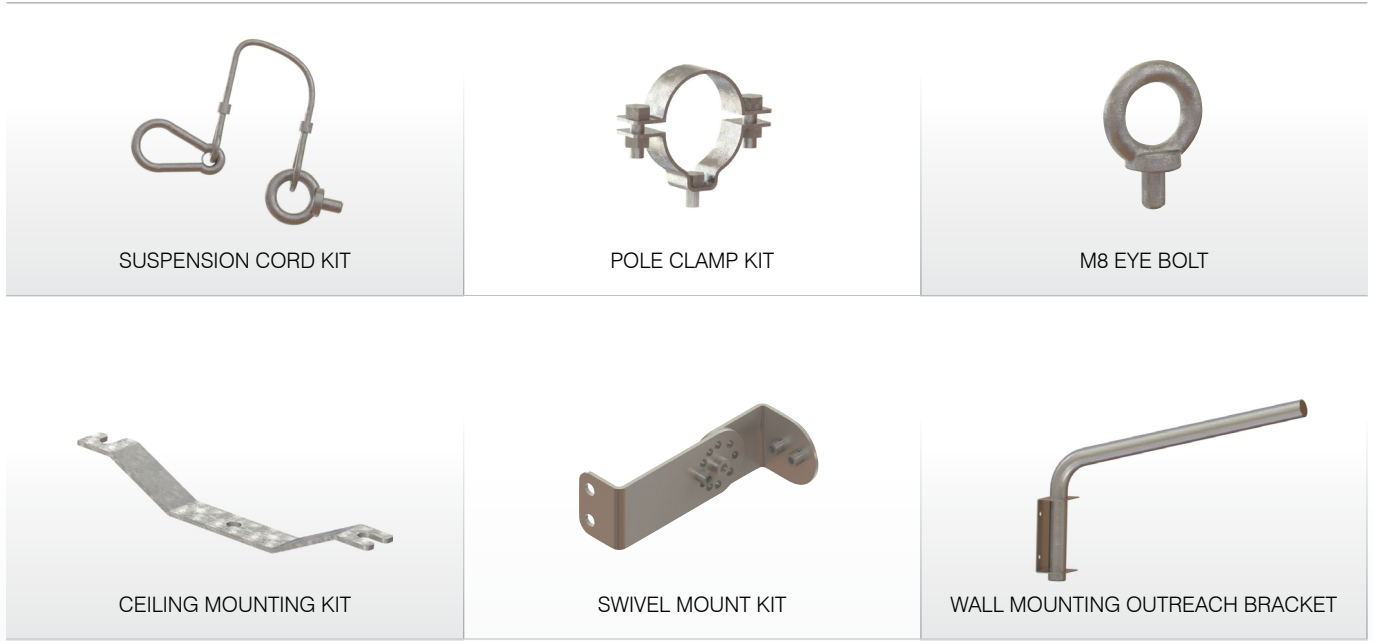
# Light Distribution



## Product Dimensions

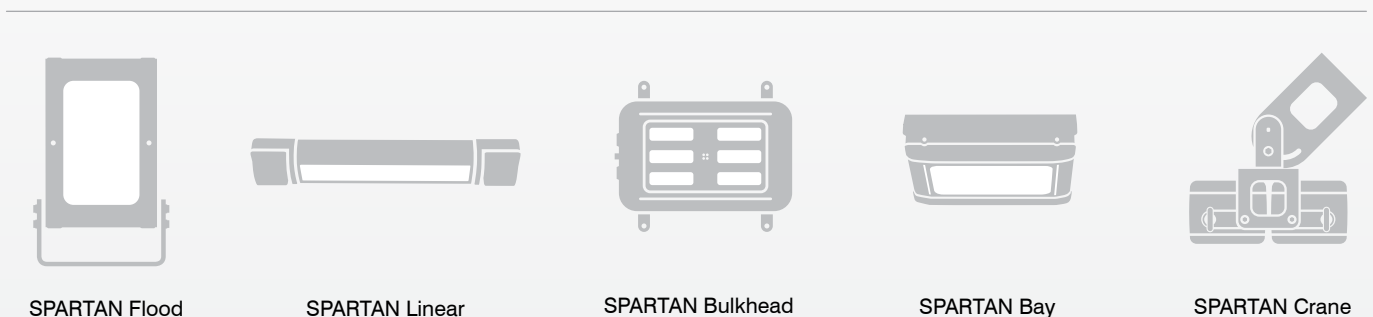


## SPARTAN Linear Accessories



Other accessories also available, including Magnetic Mounting Kit (SPX-BKT-MAG) and Tear Off Optic Strips - pack of 10 (SPX-BKT-PF84)

## Products in the SPARTAN Family





# SCATTERGOOD & JOHNSON LTD

ELECTRICAL ENGINEERING & FLUID CONTROL DISTRIBUTORS

Est.1899

At Scattergood & Johnson Ltd, we pride ourselves on being a technical distributor to specialist industries.

Working with a range of quality product suppliers across a number of specialist markets, we are not your average 'box shifter' - we are your technical and supply chain partner.

We fully support every product we sell - for free! Our internal team and external sales engineers can answer any product or application question, no matter the complexity.

Backing up this technical ability is a range of 50,000+ products available from stock for nationwide next day delivery (same day if required!), or you can collect what you need from any of our trade counters around the UK.

Select your specialist interest below to learn more about how we can help.



Online, In Branch and On the Road - Scattergood & Johnson Ltd, there when you need us.

# [www.scatts.co.uk](http://www.scatts.co.uk)