



Empty enclosures  
M2RA

Product designation

Product type designation

**Electrical features**

Maximum operating current ( $\leq 440V$ ) A 32

**Components**

Contactor standard supplied BF25A, BF26A, BF32A

Thermal relay to purchase separately RF38

**Mechanical features**

Weight g 670

**Ambient conditions**

Operating temperature

min	°C	-25
max	°C	+60

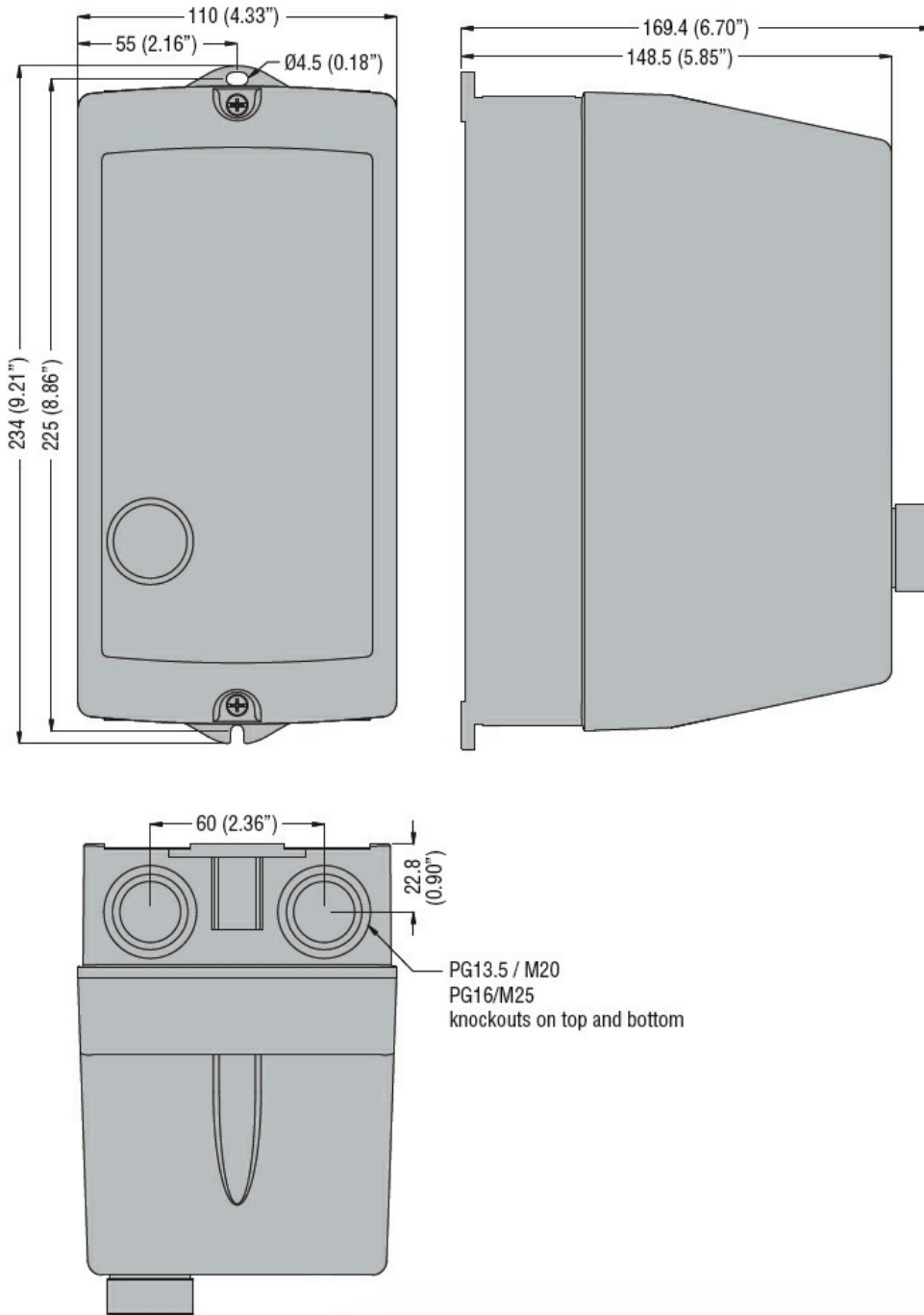
Storage temperature

min	°C	-40
max	°C	+70

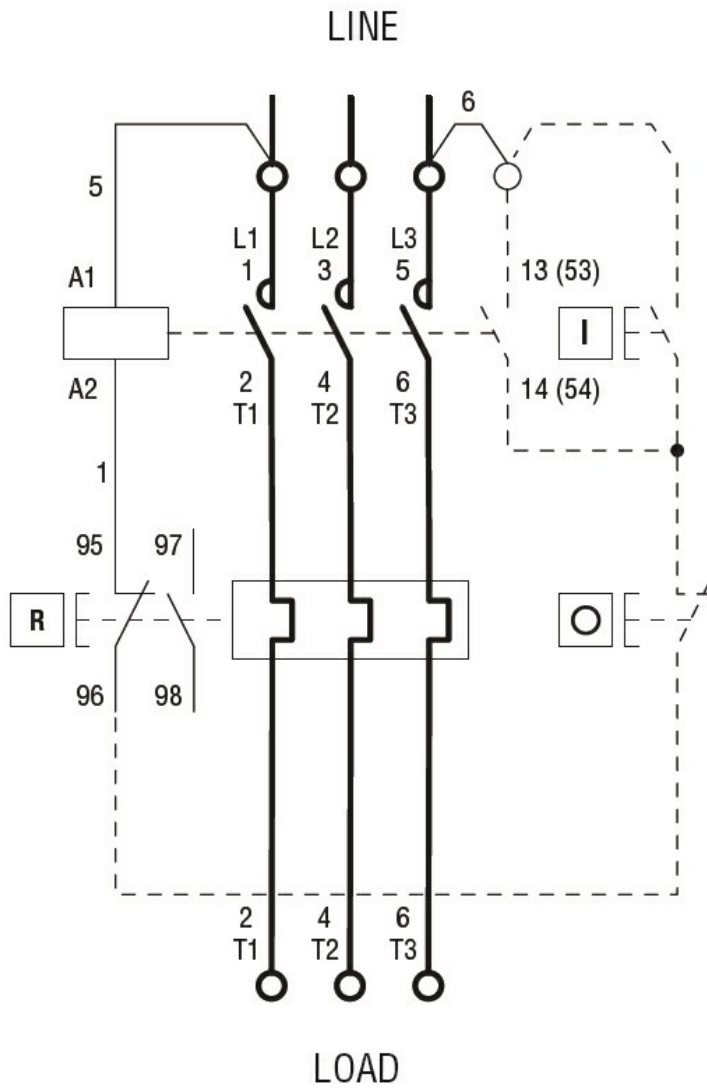
**Resistance & Protection**

Frontal IP degree IP65

**Dimensions [mm (in)]**



Wiring diagrams



R = Reset; I = Start; O = Stop

### Certifications and compliance

#### Compliance

CSA C22.2 n° 14  
IEC/EN 60947-1  
IEC/EN 60947-4-1  
UL508

#### Certificates

cULus

### ETIM classification

ETIM 8.0

EC000200 -  
Enclosure for  
control circuit  
devices