

2A-M

HEAVY DUTY RING TERMINAL, WITHOUT INSPECTION HOLE, WITH LONG NECK, FOR COPPER CONDUCTORS



CERTIFICATIONS & APPROVALS

 UL (cULus)

Features

TECHNICAL INFORMATION

Minimum operating temperature	-50 °C
Maximum operating temperature	150 °C
Spy hole	No
Narrow connection	No
Bend angle of the connection	0 °
Number of holes on the palm	1
Markings found	factory mark; cembre catalogue number; conductor section and nature; screw diameter
Typology	single
Easy insertion input	Yes
Maximum operating voltage	35000 V
Barrel type	closed
Grease inside the barrel	No
Filler putty	No

WEIGHT AND DIMENSIONS

Centre distance between holes	0 mm
-------------------------------	------

CLASSIFICATION AND DATA ORDERING

Electrocode	3684
ETIM Class 7	Tube cable lug for copper conductors [EC001051]
Customs code	85369010

MATERIAL COMPOSITION AND TREATMENTS

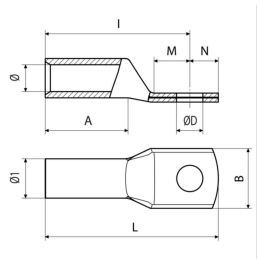
Conductor body material	Rame elettrolitico con purezza superiore al 99,95%
Minimum thickness of the surface coating of the conducting body	3 µm
Surface treatment of the conductor body	tin plating
Annealing	Yes
Internal surface of the barrel	smooth
Brazed seam	No

LOGISTIC

Type of packaging	; box
-------------------	-------

CERTIFICATIONS

ROHS compliant	Yes
----------------	-----



2A3-M Range of cable cross section
16 mm²

tipo	Reference standard	Screw diameter	ØD [mm]	B [mm]	N [mm]	M [mm]	I [mm]	L [mm]	A [mm]	Ø [mm]	Cable stripping length [mm]	Ø1 [mm]	Gross weight [g]	Unit in minimal packaging [pce]	Unit in standard packaging [pce]
2A3-M8	UL 486A-486B	M8	8.4	15	8	9	35.5	43.5	22	5.8	24.2	7.9	7,740	100	100
2A3-M10	UL 486A-486B	M10	10.5	18	10	11	37.5	47.5	22	5.8	24.2	7.9	8,460	100	100

2A5-M Range of cable cross section
25 mm²

tipo	Reference standard	Screw diameter	ØD [mm]	B [mm]	N [mm]	M [mm]	I [mm]	L [mm]	A [mm]	Ø [mm]	Cable stripping length [mm]	Ø1 [mm]	Gross weight [g]	Unit in minimal packaging [pce]	Unit in standard packaging [pce]
2A5-M8	UL 486A-486B	M8	8.4	15	8	9	43	51	25.5	7	28	9.3	12,260	100	100
2A5-M10	UL 486A-486B	M10	10.5	18	10	11	45	55	25.5	7	28	9.3	13,080	50	50
2A5-M12	UL 486A-486B	M12	13.2	21	12	14	48	60	25.5	7	28	9.3	13,760	50	50

2A7-M Range of cable cross section
35 mm²

tipo	Reference standard	Screw diameter	ØD [mm]	B [mm]	N [mm]	M [mm]	I [mm]	L [mm]	A [mm]	Ø [mm]	Cable stripping length [mm]	Ø1 [mm]	Gross weight [g]	Unit in minimal packaging [pce]	Unit in standard packaging [pce]
2A7-M8	UL 486A-486B	M8	8.4	17	8	9	45	53	26	8.9	28.6	11.7	20,086	50	50
2A7-M10	UL 486A-486B	M10	10.5	19	10	11	47	57	26	8.9	28.6	11.7	20,720	50	50
2A7-M12	UL 486A-486B	M12	13.2	21	12	14	50	62	26	8.9	28.6	11.7	22,800	50	50

2A10-M Range of cable cross section
50 mm²

tipo	Reference standard	Screw diameter	ØD [mm]	B [mm]	N [mm]	M [mm]	I [mm]	L [mm]	A [mm]	Ø [mm]	Cable stripping length [mm]	Ø1 [mm]	Gross weight [g]	Unit in minimal packaging [pce]	Unit in standard packaging [pce]
2A10-M10	UL 486A-486B	M10	10.5	20	10	11	53	63	30	10	33	13	28,400	50	50
2A10-M12	UL 486A-486B	M12	13.2	21	12	14	56	68	30	10	33	13	29,480	50	50
2A10-M14	UL 486A-486B	M14	15	25	14	16	58	72	30	10	33	13	30,180	50	50
2A10-M16	UL 486A-486B	M16	17	26	16	18	60	76	30	10	33	13	31,680	50	50

2A14-M Range of cable cross section
63 ÷ 70 mm²

tipo	Reference standard	Screw diameter	ØD [mm]	B [mm]	N [mm]	M [mm]	I [mm]	L [mm]	A [mm]	Ø [mm]	Cable stripping length [mm]	Ø1 [mm]	Gross weight [g]	Unit in minimal packaging [pce]	Unit in standard packaging [pce]
2A14-M10	UL 486A-486B	M10	10.5	21	10	11	60	70	36	11.3	39.6	14.6	39,680	50	50
2A14-M12	UL 486A-486B	M12	13.2	22	12	14	63	75	36	11.3	39.6	14.6	40,840	50	50
2A14-M14	UL 486A-486B	M14	15	25	14	16	65	79	36	11.3	39.6	14.6	42,240	50	50
2A14-M16	UL 486A-486B	M16	17	26	16	18	67	83	36	11.3	39.6	14.6	43,840	50	50

2A19-M Range of cable cross section
95 mm²

tipo	Reference standard	Screw diameter	ØD [mm]	B [mm]	N [mm]	M [mm]	I [mm]	L [mm]	A [mm]	Ø [mm]	Cable stripping length [mm]	Ø1 [mm]	Gross weight [g]	Unit in minimal packaging [pce]	Unit in standard packaging [pce]
2A19-M10	UL 486A-486B	M10	10.5	25	10	11	66.5	76.5	40	13.5	44	17.5	63,520	25	25
2A19-M12	UL 486A-486B	M12	13.2	25	12	14	69.5	81.5	40	13.5	44	17.5	66,200	25	25
2A19-M14	UL 486A-486B	M14	15	25	14	16	71.5	85.5	40	13.5	44	17.5	67,920	25	25
2A19-M16	UL 486A-486B	M16	17	27	16	18	73.5	90.5	40	13.5	44	17.5	70,160	25	25
2A19-M20	UL 486A-486B	M20	21	29	20	22	77.5	97.5	40	13.5	44	17.5	70,312	25	25

2A24-M Range of cable cross section
120 mm²

tipo	Reference standard	Screw diameter	ØD [mm]	B [mm]	N [mm]	M [mm]	I [mm]	L [mm]	A [mm]	Ø [mm]	Cable stripping length [mm]	Ø1 [mm]	Gross weight [g]	Unit in minimal packaging [pce]	Unit in standard packaging [pce]
2A24-M10	UL 486A-486B	M10	10.5	28.5	10	11	72	82	42	15.2	46.2	19.6	84,400	15	15
2A24-M12	UL 486A-486B	M12	13.2	28.5	12	14	75	87	42	15.2	46.2	19.6	87,000	15	15
2A24-M14	UL 486A-486B	M14	15	28.5	14	16	77	91	42	15.2	46.2	19.6	89,867	15	15
2A24-M16	UL 486A-486B	M16	17	28.5	16	18	79	95	42	15.2	46.2	19.6	93,027	15	15
2A24-M20	UL 486A-486B	M20	21	30	20	22	83	103	42	15.2	46.2	19.6	96,960	25	25

2A30-M Range of cable cross section
150 mm²

tipo	Reference standard	Screw diameter	ØD [mm]	B [mm]	N [mm]	M [mm]	I [mm]	L [mm]	A [mm]	Ø [mm]	Cable stripping length [mm]	Ø1 [mm]	Gross weight [g]	Unit in minimal packaging [pce]	Unit in standard packaging [pce]
2A30-M10	UL 486A-486B	M10	10.5	31.5	11	13	81	92	49	16.7	53.9	21.5	114,467	15	15

tipo	Reference standard	Screw diameter	ØD [mm]	B [mm]	N [mm]	M [mm]	I [mm]	L [mm]	A [mm]	Ø [mm]	Cable stripping length [mm]	Ø1 [mm]	Gross weight [g]	Unit in minimal packaging [pce]	Unit in standard packaging [pce]
2A30-M12	UL 486A-486B	M12	13.2	31.5	14	16	84	98	49	16.7	53.9	21.5	127,600	15	15
2A30-M14	UL 486A-486B	M14	15	31.5	16	18	86	102	49	16.7	53.9	21.5	122,667	15	15
2A30-M16	UL 486A-486B	M16	17	31.5	17	19	87	104	49	16.7	53.9	21.5	123,333	15	15
2A30-M20	UL 486A-486B	M20	21	31.5	20	22	90	110	49	16.7	53.9	21.5	127,040	15	15

2A37-M Range of cable cross section 185 mm²

tipo	Reference standard	Screw diameter	ØD [mm]	B [mm]	N [mm]	M [mm]	I [mm]	L [mm]	A [mm]	Ø [mm]	Cable stripping length [mm]	Ø1 [mm]	Gross weight [g]	Unit in minimal packaging [pce]	Unit in standard packaging [pce]
2A37-M12	UL 486A-486B	M12	13.2	35.5	14	16	94	108	55	19.2	60.5	24.4	164,450	10	10
2A37-M14	UL 486A-486B	M14	15	35.5	16	18	96	112	55	19.2	60.5	24.4	172,133	15	15
2A37-M16	UL 486A-486B	M16	17	35.5	17	19	97	114	55	19.2	60.5	24.4	169,867	15	15
2A37-M20	UL 486A-486B	M20	21	35.5	20	22	100	120	55	19.2	60.5	24.4	174,667	15	15

2A48-M Range of cable cross section 240 mm²

tipo	Reference standard	Screw diameter	ØD [mm]	B [mm]	N [mm]	M [mm]	I [mm]	L [mm]	A [mm]	Ø [mm]	Cable stripping length [mm]	Ø1 [mm]	Gross weight [g]	Unit in minimal packaging [pce]	Unit in standard packaging [pce]
2A48-M12	UL 486A-486B	M12	13.2	39	14	16	95	109	55	21.1	60.5	27.2	217,200	5	5
2A48-M14	UL 486A-486B	M14	15	39	16	18	97	113	55	21.1	60.5	27.2	224,000	5	5
2A48-M16	UL 486A-486B	M16	17	39	17	19	98	115	55	21.1	60.5	27.2	225,600	5	5
2A48-M20	UL 486A-486B	M20	21	39	20	22	91	121	55	21.1	60.5	27.2	227,400	5	5

2A60-M Range of cable cross section 300 mm²

tipo	Reference standard	Screw diameter	ØD [mm]	B [mm]	N [mm]	M [mm]	I [mm]	L [mm]	A [mm]	Ø [mm]	Cable stripping length [mm]	Ø1 [mm]	Gross weight [g]	Unit in minimal packaging [pce]	Unit in standard packaging [pce]
2A60-M12	UL 486A-486B	M12	13.2	30	14	20	115.5	129.5	70	23.7	77	30.6	331,200	5	5
2A60-M14	UL 486A-486B	M14	15	30	16	22	117.5	133.5	70	23.7	77	30.6	338,800	5	5
2A60-M16	UL 486A-486B	M16	17	40	19	22	117.5	136.5	70	23.7	77	30.6	345,200	5	5

tipo	Reference standard	Screw diameter	ØD [mm]	B [mm]	N [mm]	M [mm]	I [mm]	L [mm]	A [mm]	Ø [mm]	Cable stripping length [mm]	Ø1 [mm]	Gross weight [g]	Unit in minimal packaging [pce]	Unit in standard packaging [pce]
2A80-M20	UL 486A-486B	M20	21	40	23	24	119.5	142.5	70	23.7	77	30.6	355,200	5	5

2A80-M Range of cable cross section
400 mm²

tipo	Reference standard	Screw diameter	ØD [mm]	B [mm]	N [mm]	M [mm]	I [mm]	L [mm]	A [mm]	Ø [mm]	Cable stripping length [mm]	Ø1 [mm]	Gross weight [g]	Unit in minimal packaging [pce]	Unit in standard packaging [pce]
2A80-M12	UL 486A-486B	M12	13.2	51	19	22	121	140	70	27	77	35	476,800	5	5
2A80-M14	UL 486A-486B	M14	15	51	19	22	121	140	70	27	77	35	476,000	5	5
2A80-M16	UL 486A-486B	M16	17	51	19	22	121	140	70	27	77	35	473,600	5	5
2A80-M20	UL 486A-486B	M20	21	51	23	24	123	146	70	27	77	35	484,400	5	5

2A100-M Range of cable cross section
500 mm²

tipo	Screw diameter	ØD [mm]	B [mm]	N [mm]	M [mm]	I [mm]	L [mm]	A [mm]	Ø [mm]	Cable stripping length [mm]	Ø1 [mm]	Gross weight [g]	Unit in minimal packaging [pce]	Unit in standard packaging [pce]
2A100-M16	M16	17	56.5	19	22	122	141	67	30.3	73.7	39.5	604,000	1	1
2A100-M20	M20	21	56.5	23	24	124	147	67	30.3	73.7	39.5	630,400	1	1

2A120-M Range of cable cross section
600 ÷ 630 mm²

tipo	Screw diameter	ØD [mm]	B [mm]	N [mm]	M [mm]	I [mm]	L [mm]	A [mm]	Ø [mm]	Cable stripping length [mm]	Ø1 [mm]	Gross weight [g]	Unit in minimal packaging [pce]	Unit in standard packaging [pce]
2A120-M16	M16	17	61.5	19	22	140	159	85	33.4	93.5	42.6	766,000	1	1
2A120-M20	M20	21	61.5	23	24	142	165	85	33.4	93.5	42.6	781,500	1	1

2A160-M Range of cable cross section
800 mm²

tipo	Screw diameter	ØD [mm]	B [mm]	N [mm]	M [mm]	I [mm]	L [mm]	A [mm]	Ø [mm]	Cable stripping length [mm]	Ø1 [mm]	Gross weight [g]	Unit in minimal packaging [pce]	Unit in standard packaging [pce]
2A160-M20	M20	21	72	23	24	164	187	100	38	110	50	1357,750	1	1

2A200-M Range of cable cross section
1000 mm²

tipo	Screw diameter	ØD [mm]	B [mm]	N [mm]	M [mm]	I [mm]	L [mm]	A [mm]	Ø [mm]	Cable stripping length [mm]	Ø1 [mm]	Gross weight [g]	Unit in minimal packaging [pce]	Unit in standard packaging [pce]
2A200-M20	M20	21	82	23	24	179	202	110	44	121	56	1636,000	1	1

