

1112

COUNTER-NUT, IN PA6.6 POLYAMIDE, METRIC PITCH



Features

TECHNICAL INFORMATION

Range of operating temperature (dynamic)	-20 ÷ 90 °C
Range of operating temperature (static)	-40 ÷ 100 °C
Markings found	thread type
Collar	No
Contact cusps	No
Reference standard	CEI EN 60423
Self-extinguishing fire class according to UL 94	V2
Divisible	No

CLASSIFICATION AND DATA ORDERING

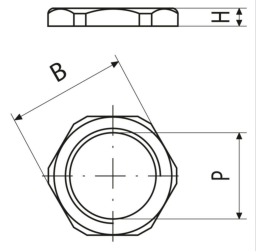
Electrocode	36A
ETIM Class 7	Locknut for cable screw gland [EC000940]
Customs code	39269097

MATERIAL COMPOSITION AND TREATMENTS

Material	Polyamide 6.6
Halogen free	No

CERTIFICATIONS

ROHS compliant	Yes
----------------	-----



1112

tipo	Suitable for	P	Colour	Width [mm]	Spanner size [mm]	H [mm]	Gross weight [g]	Type of packaging	Unit in minimal packaging [pce]	Unit in standard packaging [pce]
1112	1900.M12; 1901.M12; 1910.M12; 1900DP.M12	M12x1.5	Grey RAL 7035	18.5	17	5	0,934	; box	100	100
1112N	1900.M12; 1901.M12; 1910.M12; 1900DP.M12	M12x1.5	Black RAL 9005	18.5	17	5	0,920	; box	100	100
1116	1900.M16; 1901.M16; 1910.M16; 1900DP.M16	M16x1.5	Grey RAL 7035	24	22	5	1,500	; box	100	100
1116N	1900.M16; 1901.M16; 1910.M16; 1900DP.M16	M16x1.5	Black RAL 9005	24	22	5	1,480	; box	100	100
1120	1900.M20; 1901.M20; 1910.M20; 1900DP.M20	M20x1.5	Grey RAL 7035	29	27	6	2,460	; box	100	100
1120N	1900.M20; 1901.M20; 1910.M20; 1900DP.M20	M20x1.5	Black RAL 9005	29	27	6	2,500	; box	100	100
1125	1900.M25; 1901.M25; 1910.M25; 1900DP.M25	M25x1.5	Grey RAL 7035	35.5	32	6	3,120	; box	100	100
1125N	1900.M25; 1901.M25; 1910.M25; 1900DP.M25	M25x1.5	Black RAL 9005	35.5	32	6	3,073	; box	100	100
1132	1900.M32; 1901.M32; 1910.M32; 1900DP.M32	M32x1.5	Grey RAL 7035	45	41	7	6,020	; box	50	50
1132N	1900.M32; 1901.M32; 1910.M32; 1900DP.M32	M32x1.5	Black RAL 9005	45	41	7	5,960	; box	50	50
1140	1900.M40; 1901.M40; 1910.M40; 1900DP.M40; 1940.M40; 1941.M40	M40x1.5	Grey RAL 7035	55	50	7	9,267	box		
1140N	1900.M40; 1901.M40; 1910.M40; 1900DP.M40; 1940.M40; 1941.M40	M40x1.5	Black RAL 9005	55	50	7	9,400	box		
1150	1900.M50; 1901.M50; 1910.M50; 1900DP.M50	M50x1.5	Grey RAL 7035	65	60	8	13,000	box		
1150N	1900.M50; 1901.M50; 1910.M50; 1900DP.M50	M50x1.5	Black RAL 9005	65	60	8	13,000	box		
1163	1900.M63; 1901.M63; 1910.M63; 1900DP.M63	M63x1.5	Grey RAL 7035	82	75	8	20,667	box		
1163N	1900.M63; 1901.M63; 1910.M63; 1900DP.M63	M63x1.5	Black RAL 9005	82	75	8	20,400	box		