

1710

COUNTER-NUT, IN POLYAMIDE PA6.6, PG PITCH



Features

TECHNICAL INFORMATION

Range of operating temperature (dynamic)	-20 ÷ 90 °C
Markings found	thread type
Collar	No
Contact cusps	No
Reference standard	DIN 40430; DIN 46320
Self-extinguishing fire class according to UL 94	V2

LOGISTIC

Type of packaging	; box
-------------------	-------

CERTIFICATIONS

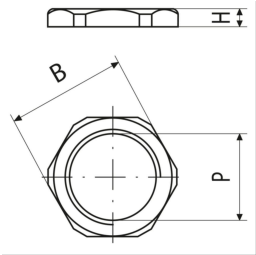
ROHS compliant	Yes
----------------	-----

MATERIAL COMPOSITION AND TREATMENTS

Material	Polyamide 6.6
Halogen free	No

CLASSIFICATION AND DATA ORDERING

Electrocode	36A
ETIM Class 7	Locknut for cable screw gland [EC000940]
Customs code	39269097



1710

tipo	Range of operating temperature (static) [°C]	Suitable for	P	Colour	Divisible	Width [mm]	Spanner size [mm]	H [mm]	Gross weight [g]	Unit in minimal packaging [pce]	Unit in standard packaging [pce]
1719	-40 ÷ 100	1900.07; 1901.07; 1910.07; 1900DP.07	Pg7	Grey RAL 7035	No	21	19	5	0,995	100	100
1719N	-40 ÷ 100	1900.07; 1901.07; 1910.07; 1900DP.07	Pg7	Black RAL 9005	No	21	19	5		100	100
1710	-40 ÷ 100	1900.09; 1901.09; 1910.09; 1900DP.09	Pg9	Grey RAL 7035	No	24	22	5	1,520	100	100
1710N	-40 ÷ 100	1900.09; 1901.09; 1910.09; 1900DP.09	Pg9	Black RAL 9005	No	24	22	5	1,520	100	100
1711	-40 ÷ 100	1900.11; 1901.11; 1910.11; 1900DP.11	Pg11	Grey RAL 7035	No	26	24	5	1,600	100	100
1711N	-40 ÷ 100	1900.11; 1901.11; 1910.11; 1900DP.11	Pg11	Black RAL 9005	No	26	24	5	1,425	100	100
1712	-40 ÷ 100	1900.13; 1901.13; 1910.13; 1900DP.13	Pg13.5	Grey RAL 7035	No	29	27	6	2,340	100	100
1712N	-40 ÷ 100	1900.13; 1901.13; 1910.13; 1900DP.13	Pg13.5	Black RAL 9005	No	29	27	6	2,310	100	100
1713	-40 ÷ 100	1900.16; 1901.16; 1910.16; 1900DP.16	Pg16	Grey RAL 7035	No	33	30	6	2,980	100	100
1713N	-40 ÷ 100	1900.16; 1901.16; 1910.16; 1900DP.16	Pg16	Black RAL 9005	No	33	30	6		100	100
1714	-40 ÷ 100	1900.21; 1901.21; 1910.21; 1900DP.21	Pg21	Grey RAL 7035	No	39	36	7	4,350	100	100
1714N	-40 ÷ 100	1900.21; 1901.21; 1910.21; 1900DP.21	Pg21	Black RAL 9005	No	39	36	7	4,570	100	100
1715	-40 ÷ 100	1900.29; 1901.29; 1910.29; 1900DP.29	Pg29	Grey RAL 7035	No	50	46	7.5	7,436	25	25
1715N	-40 ÷ 100	1900.29; 1901.29; 1910.29; 1900DP.29	Pg29	Black RAL 9005	No	50	46	7.5	7,240	50	50
1719E17N	-40 ÷ 100	1900.07; 1901.07; 1910.07; 1900DP.07	Pg7	Black RAL 9005	No	18.5	17	5	0,860	100	100
1714E34		1900.21; 1901.21; 1910.21; 1900DP.21	Pg21	Grey RAL 7001			34	7	3,730	100	100
1719E17		1900.07; 1901.07; 1910.07; 1900DP.07	Pg7	Grey RAL 7035	No	18.5	17	5	0,832	100	100

