

A-M Contained palm

RING TERMINAL WITH NARROW PALM, FOR COPPER CONDUCTORS, FOR LOW VOLTAGE CIRCUIT BREAKERS



CERTIFICATIONS & APPROVALS

 UL (cULus)

Features

TECHNICAL INFORMATION

Minimum operating temperature	-50 °C
Maximum operating temperature	150 °C
Narrow connection	Yes
Bend angle of the connection	0 °
Number of holes on the palm	1
Markings found	factory mark; cembre catalogue number; conductor section and nature; screw diameter
Typology	single
Easy insertion input	Yes
Barrel type	closed
Grease inside the barrel	No
Filler putty	No

WEIGHT AND DIMENSIONS

Centre distance between holes	0 mm
-------------------------------	------

CLASSIFICATION AND DATA ORDERING

Electrocode	3684
ETIM Class 7	Tube cable lug for copper conductors [EC001051]
Customs code	85369010

MATERIAL COMPOSITION AND TREATMENTS

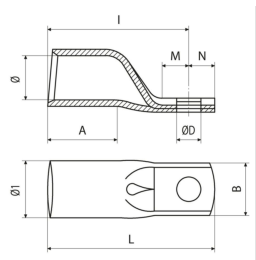
Conductor body material	Rame elettrolitico con purezza superiore al 99,95%
Minimum thickness of the surface coating of the conducting body	3 µm
Surface treatment of the conductor body	tin plating
Annealing	Yes
Internal surface of the barrel	smooth
Brazed seam	No

LOGISTIC

Type of packaging	; box
-------------------	-------

CERTIFICATIONS

ROHS compliant	Yes
----------------	-----



A-M CONTAINED PALM

tipo	Spy hole	Reference standard	Screw diameter	ØD [mm]	B [mm]	N [mm]	M [mm]	I [mm]	Range of cable cross section [mm²]	L [mm]	A [mm]	Ø [mm]	Cable stripping length [mm]	Ø1 [mm]	Gross weight [g]	Unit in minimal packaging [pce]	Unit in standard packaging [pce]
A2-M5/9	Yes	UL 486A-486B	M5	5.3	9	6	6.5	20		26	8	4.6	8.8	6.8	4,060	100	100
A3-M5/9	Yes	UL 486A-486B	M5	5.3	9	6	6.5	24.5		29	11.5	5.8	12.6	7.9	5,200	100	100
A5-M5/9	Yes	UL 486A-486B	M5	5.3	9	6	6.5	25.5		31.5	10.5	7	11.5	10	7,080	100	100
A7B-M6/11.5	No	UL 486A-486B	M6	6.4	11.5	7	8	29.5	35	36.5	15.5	8.9	17	11.7	12,980	100	100
A10B-M6/11.5	No	UL 486A-486B	M6	6.4	11.5	7	8	33.5	50	40.5	18.5	10	20.3	13	17,680	50	50
A14B-M6/11.5	No	UL 486A-486B	M6	6.4	11.5	7	8	37	70	44	20	11.3	22	14.6	24,280	50	50
A19-M8/19	No		M8	8.4	19	8	9	44.5		52.5	22.5	13.5	23.5	17.5	42,000	25	25
A19B-M8/15.5	No	UL 486A-486B	M8	8.4	15.5	8	9	44.5	95	52.5	24.5	13.5	27	17.5	42,160	25	25
A24B-M8/19	No	UL 486A-486B	M8	8.4	19	9	14	51	120	60	25.5	15.2	28	19.6	58,852	25	25
A24B-M10/19	No	UL 486A-486B	M10	10.5	19	9	14	51	120	60	25.5	15.2	28	19.6	57,200	25	25
A30B-M8/19	No	UL 486A-486B	M8	8.4	19	9	18	61	150	70	28.5	16.7	31.3	21.5	82,960	25	25
A30B-M10/19	No	UL 486A-486B	M10	10.5	19	9	18	61	150	70	28.5	16.7	31.3	21.5	81,040	25	25
A37B-M10/24.5	No	UL 486A-486B	M10	10.5	24.5	9	18	68	185	77	31.5	19.2	34.6	24.4	113,200	15	15
A48-M10/31	Yes	UL 486A-486B	M10	10.5	31	9	13	71	240	80	36	21.1	39.6	27.2	154,800	10	10
A48-M12/31	Yes	UL 486A-486B	M12	13.2	31	12	16	74	240	86	36	21.1	39.6	27.2	161,450	10	10
A48-M16/31	Yes	UL 486A-486B	M16	17	31	17	19	77	240	94	33	21.1	36.3	27.2	172,200	10	10
A60B-M10/31	No	UL 486A-486B	M10	10.5	31	12	16	83	300	95	42	23.7	46.2	30.6	231,400	10	10
A60B-M12/31	No	UL 486A-486B	M12	13.2	31	12	16	83	300	95	42	23.7	46.2	30.6	227,400	10	10

