

ANE-M Fine stranded

RING TERMINAL, PRE-INSULATED WITH PA 6.6, FOR ULTRA FLEXIBLE COPPER CONDUCTORS CLASS 5 AND 6



Features

TECHNICAL INFORMATION

Minimum operating temperature	-20 °C
Maximum operating temperature	115 °C
Threshold of operating temperature for short periods	130 °C
Spy hole	Yes
Bend angle of the connection	0 °
Number of holes on the palm	1
Barrel reinforcement ring	No
Markings found	factory mark; cembre catalogue number; conductor section and nature; screw diameter
Typology	single
Insulated cover colour	Black RAL 9005
Type of insulation	partial
Easy insertion input	Yes
Reinforced with anti-vibration collar	No

WEIGHT AND DIMENSIONS

Centre distance between holes	0 mm
-------------------------------	------

CLASSIFICATION AND DATA ORDERING

Electrocode	3684
ETIM Class 7	Tube cable lug for copper conductors [EC001051]
Customs code	85369010

MATERIAL COMPOSITION AND TREATMENTS

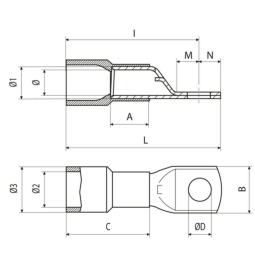
Conductor body material	Rame elettrolitico con purezza superiore al 99,95%
Minimum thickness of the surface coating of the conducting body	3 µm
Surface treatment of the conductor body	tin plating
Insulated cover material	Polyamide PA6.6
Annealing	Yes
Internal surface of the barrel	smooth
Halogen free	No

LOGISTIC

Type of packaging	; box
-------------------	-------

CERTIFICATIONS

ROHS compliant	Yes
----------------	-----



ANE9-M Range of cable cross section
35 mm²

tipo	Narrow connection	Screw diameter	ØD [mm]	B [mm]	N [mm]	M [mm]	I [mm]	L [mm]	A [mm]	C [mm]	Ø2 [mm]	Ø3 [mm]	Ø [mm]	Cable stripping length [mm]	Gross weight [g]	Unit in minimal packaging [pce]	Unit in standard packaging [pce]
ANE9-M6/15	Yes	M6	6.4	15	7	8	31.5	54	16.5	30.3	13.6	15.5	9.3	18	14,164	50	50
ANE9-M8	No	M8	8.4	17	8	9	32.5	56	16.5	30.3	13.6	15.5	9.3	18	14,800	50	50
ANE9-M10	No	M10	10.5	18.5	10	11	34.5	60	16.5	30.3	13.6	15.5	9.3	18	15,720	50	50
ANE9-M12	No	M12	13.2	21	12	14	37.5	65	16.5	30.3	13.6	15.5	9.3	18	16,120	50	50

ANE12-M

tipo	Narrow connection	Screw diameter	ØD [mm]	B [mm]	N [mm]	M [mm]	I [mm]	Range of cable cross section [mm ²]	L [mm]	A [mm]	C [mm]	Ø2 [mm]	Ø3 [mm]	Ø [mm]	Cable stripping length [mm]	Gross weight [g]	Unit in minimal packaging [pce]	Unit in standard packaging [pce]
ANE12-M6/15	Yes	M6	6.4	15	7	8	33.5	6	59.5	16	35.8	15.7	18	11	21	18,720	25	25
ANE12-M8	No	M8	8.4	19.8	8	9	34.5	50	61.5	16	35.8	15.7	18	11	21	19,964	25	25
ANE12-M10	No	M10	10.5	19.8	10	11	36.5	50	65.5	16	35.8	15.7	18	11	21	20,800	25	25
ANE12-M10/19	Yes	M10	10.5	19	10	11	36.5	50	65.5	16	35.8	15.7	18	11	21	20,936	25	25
ANE12-M12	No	M12	13.2	22	12	14	39.5	50	70.5	16	35.8	15.7	18	11	21	21,920	25	25

ANE17-M Range of cable cross section
70 mm²

tipo	Narrow connection	Screw diameter	ØD [mm]	B [mm]	N [mm]	M [mm]	I [mm]	L [mm]	A [mm]	C [mm]	Ø2 [mm]	Ø3 [mm]	Ø [mm]	Cable stripping length [mm]	Gross weight [g]	Unit in minimal packaging [pce]	Unit in standard packaging [pce]
ANE17-M6	No	M6	6.4	23	7	8	38	63.8	20	40	17.9	20.4	13	23	30,400	25	25
ANE17-M8	No	M8	8.4	23	8	9	39	65.8	20	40	17.9	20.4	13	23	30,320	25	25
ANE17-M10	No	M10	10.5	23	10	11	41	69.8	20	40	17.9	20.4	13	23	32,320	25	25
ANE17-M10/19	Yes	M10	10.5	19	10	11	41	69.8	20	40	17.9	20.4	13	23	31,200	25	25
ANE17-M12	No	M12	13.2	23	12	14	44	74.8	20	40	17.9	20.4	13	23	36,000	25	25
ANE17-M14	No	M14	15	25	12	15.5	45.5	76.3	20	40	17.9	20.4	13	23	33,720	25	25
ANE17-M16	No	M16	17	27	13.5	16.5	46.5	78.8	20	40	17.9	20.4	13	23	34,160	25	25

ANE20-M Range of cable cross section
95 mm²

tipo	Narrow connection	Screw diameter	ØD [mm]	B [mm]	N [mm]	M [mm]	I [mm]	L [mm]	A [mm]	C [mm]	Ø2 [mm]	Ø3 [mm]	Ø [mm]	Cable stripping length [mm]	Gross weight [g]	Unit in minimal packaging [pce]	Unit in standard packaging [pce]
ANE20-M8	No	M8	8.4	27	8	9	42	70.6	23	42.6	20	22.7	15	25	42,240	25	25
ANE20-M10	No	M10	10.5	27	10	11	44	74.6	23	42.6	20	22.7	15	25	42,160	25	25
ANE20-M12	No	M12	13.2	27	12	14	47	79.6	23	42.6	20	22.7	15	25	46,640	25	25
ANE20-M14	No	M14	15	27	12	15.5	48.5	81.1	23	42.6	20	22.7	15	25	46,720	25	25
ANE20-M16	No	M16	15	27	13.5	16.5	49.5	83.6	23	42.6	20	22.7	15	25	46,720	25	25

ANE29-M Range of cable cross section
120 mm²

tipo	Narrow connection	Screw diameter	ØD [mm]	B [mm]	N [mm]	M [mm]	I [mm]	L [mm]	A [mm]	C [mm]	Ø2 [mm]	Ø3 [mm]	Ø [mm]	Cable stripping length [mm]	Gross weight [g]	Unit in minimal packaging [pce]	Unit in standard packaging [pce]
ANE29-M10	No	M10	10.5	30	10	11	47.5	81.5	23	48	22.4	25.5	16.5	30	62,600	15	15
ANE29-M12	No	M12	13.2	30	12	14	50.5	86.5	23	48	22.4	25.5	16.5	30	65,680	15	15
ANE29-M14	No	M14	15	30	12	15.5	52	88.5	23	48	22.4	25.5	16.5	30	64,760	25	25
ANE29-M16	No	M16	17	30	13.5	16.5	53	90.5	23	48	22.4	25.5	16.5	30	65,416	25	25
ANE29-M20	No	M20	21	30	20	22	58.5	102.5	23	48	22.4	25.5	16.5	30	74,900	20	20

ANE35-M Range of cable cross section
150 mm²

tipo	Narrow connection	Screw diameter	ØD [mm]	B [mm]	N [mm]	M [mm]	I [mm]	L [mm]	A [mm]	C [mm]	Ø2 [mm]	Ø3 [mm]	Ø [mm]	Cable stripping length [mm]	Gross weight [g]	Unit in minimal packaging [pce]	Unit in standard packaging [pce]
ANE35-M12	No	M12	13.2	34.2	14	14	57.5	95	20	50	25	28	19.2	32	96,867	15	15
ANE35-M14	No	M14	15	34.2	16	15.5	59.5	99	20	50	25	28	19.2	32	95,567	15	15
ANE35-M16	No	M16	17	34.2	17	16.5	60.5	101	20	50	25	28	19.2	32	96,267	15	15
ANE35-M20	No	M20	21	34.2	20	22	63.5	107	20	50	25	28	19.2	32	99,733	15	15



Via Serenissima, 9 - 25135
Brescia - ITALY