

F-M608

MALE DISCONNECT CONNECTOR, PRE-INSULATED IN POLYCARBONATE, PARTIALLY REINFORCED, FOR COPPER CONDUCTORS, HALOGEN FREE



CERTIFICATIONS & APPROVALS



Features

TECHNICAL INFORMATION

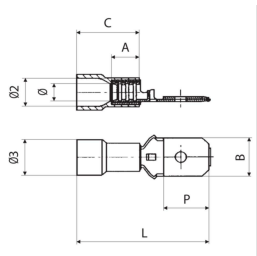
Minimum operating temperature	-20 °C
Maximum operating temperature	115 °C
Threshold of operating temperature for short periods	130 °C
Barrel reinforcement ring	Yes
Markings found	factory mark; conductor size-run
Reference standard	UL 310; CAN/CSA C22.2 No. 153-14
Typology	single
Type of insulation	partial
Easy insertion input	Yes
Self-extinguishing fire class according to UL 94	V0
Reinforced with anti-vibration collar	No

WEIGHT AND DIMENSIONS

Type of connection	Male
Tongue width	6.3 mm
Tongue length	7.3 mm

CLASSIFICATION AND DATA ORDERING

Electrocode	3681
ETIM Class 7	Round or flat plug/receptacle [EC000516]
Customs code	85366990



MATERIAL COMPOSITION AND TREATMENTS

Conductor body material	brass
Minimum thickness of the surface coating of the conducting body	3 µm
Surface treatment of the conductor body	tin plating
Insulated cover material	Polycarbonate PC10500AC
Annealing	No
Internal surface of the barrel	smooth
Halogen free	Yes
Anti-vibration neck material	copper

LOGISTIC

Type of packaging	; box
Unit in minimal packaging	100 PCE
Unit in standard packaging	100 PCE

CERTIFICATIONS

ROHS compliant	Yes
----------------	-----

RF-M608Insulated cover colour
RedRange of cable cross section
0.25 ÷ 1.5 mm²

tipo	L [mm]	A [mm]	C [mm]	Ø2 [mm]	Ø3 [mm]	Ø [mm]	Cable stripping length [mm]	Gross weight [g]
RF-M608	21	4.7	10.5	4	5.5	2.8	5.2	0,740

BF-M608Insulated cover colour
BlueRange of cable cross section
1.5 ÷ 2.5 mm²

tipo	L [mm]	A [mm]	C [mm]	Ø2 [mm]	Ø3 [mm]	Ø [mm]	Cable stripping length [mm]	Gross weight [g]
BF-M608	21	4.7	10.7	4.9	6.4	3.4	5.2	0,888

GF-M608Insulated cover colour
YellowRange of cable cross section
4 ÷ 6 mm²

tipo	L [mm]	A [mm]	C [mm]	Ø2 [mm]	Ø3 [mm]	Ø [mm]	Cable stripping length [mm]	Gross weight [g]
GF-M608	25	6.5	14.1	6.6	8.1	4.8	7.2	1,420

Via Serenissima, 9 - 25135
Brescia - ITALY