

## F-M

### RING TERMINAL, PRE-INSULATED WITH PVC, FOR COPPER CONDUCTORS



#### CERTIFICATIONS & APPROVALS



## Features

#### TECHNICAL INFORMATION

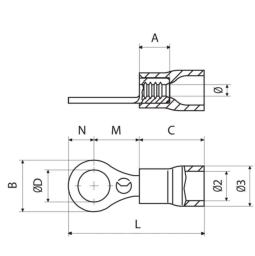
|  |              |
|--|--------------|
| Minimum operating temperature                        | -20 °C       |
| Maximum operating temperature                        | 75 °C        |
| Threshold of operating temperature for short periods | 90 °C        |
| Spy hole   | No           |
| Narrow connection                                    | No           |
| Bend angle of the connection                         | 0 °          |
| Number of holes on the palm                          | 1            |
| Barrel reinforcement ring                            | No           |
| Markings found                                       | factory mark |
| Typology   | single       |
| Type of insulation                                   | partial      |
| Easy insertion input                                 | Yes          |
| Self-extinguishing fire class according to UL 94     | V0           |
| Reinforced with anti-vibration collar                | No           |

#### WEIGHT AND DIMENSIONS

|                               |      |
|-------------------------------|------|
| Centre distance between holes | 0 mm |
|-------------------------------|------|

#### CLASSIFICATION AND DATA ORDERING

|              |  |
|--------------|--|
| Electrocode  | 3681   |
| ETIM Class 7 | Solderless copper terminals for copper conductors [EC001052] |
| Customs code | 85369010   |



#### MATERIAL COMPOSITION AND TREATMENTS

|   |  |
|---|--|
| Conductor body material   | Rame elettrolitico con purezza superiore al 99,95% |
| Minimum thickness of the surface coating of the conducting body | 3 µm   |
| Surface treatment of the conductor body                         | tin plating  |
| Insulated cover material  | PVC polyvinylchloride                              |
| Annealing   | Yes  |
| Internal surface of the barrel                                  | knurled  |
| Halogen free  | No   |

#### LOGISTIC

|                            |         |
|----------------------------|---------|
| Type of packaging          | ; box   |
| Unit in minimal packaging  | 100 PCE |
| Unit in standard packaging | 100 PCE |

#### CERTIFICATIONS

|                |     |
|----------------|-----|
| ROHS compliant | Yes |
|----------------|-----|

**RF-M**Insulated cover colour  
**Red RAL 9005**Range of cable cross section  
**0.25 ÷ 1.5 mm<sup>2</sup>**

| tipo      | Reference standard       | Screw diameter | ØD [mm] | B [mm] | N [mm] | M [mm] | I [mm] | L [mm] | A [mm] | C [mm] | Ø2 [mm] | Ø3 [mm] | Ø [mm] | Cable stripping length [mm] | Gross weight [g] |
|-----------|--------------------------|----------------|---------|--------|--------|--------|--------|--------|--------|--------|---------|---------|--------|-----------------------------|------------------|
| RF-M2     | UL 486A-486B;<br>UL 486C | M2             | 2.2     | 5.6    | 2.8    | 4.5    | 8.7    | 17.3   | 4.2    | 10.1   | 4       | 5.5     | 1.8    | 4.6                         | 0,616            |
| RF-M3     | UL 486A-486B;<br>UL 486C | M3             | 3.2     | 5.6    | 2.8    | 4.5    | 8.7    | 17.3   | 4.2    | 10.1   | 4       | 5.5     | 1.8    | 4.6                         | 0,580            |
| RF-M3.5   | UL 486A-486B;<br>UL 486C | M3.5           | 3.7     | 5.6    | 2.8    | 4.5    | 8.7    | 17.3   | 4.2    | 10.1   | 4       | 5.5     | 1.8    | 4.6                         | 0,580            |
| RF-M3.5/1 | UL 486A-486B;<br>UL 486C | M3.5           | 3.7     | 6.2    | 3.1    | 7.1    | 11.3   | 20.2   | 4.2    | 10.1   | 4       | 5.5     | 1.8    | 4.6                         | 0,638            |
| RF-M4     | UL 486A-486B;<br>UL 486C | M4             | 4.3     | 7      | 3.5    | 6.5    | 10.7   | 20     | 4.2    | 10.1   | 4       | 5.5     | 1.8    | 4.6                         | 0,660            |
| RF-M4/3   | UL 486A-486B;<br>UL 486C | M4             | 4.3     | 7.8    | 3.9    | 7.1    | 11.3   | 21     | 4.2    | 10.1   | 4       | 5.5     | 1.8    | 4.6                         | 0,720            |
| RF-M5     | UL 486A-486B;<br>UL 486C | M5             | 5.3     | 7.8    | 3.9    | 7.1    | 11.3   | 21     | 4.2    | 10.1   | 4       | 5.5     | 1.8    | 4.6                         | 0,674            |
| RF-M6     | UL 486A-486B;<br>UL 486C | M6             | 6.4     | 9.4    | 4.7    | 8.1    | 12.3   | 22.8   | 4.2    | 10.1   | 4       | 5.5     | 1.8    | 4.6                         | 0,780            |
| RF-M6/1   | UL 486A-486B;<br>UL 486C | M6             | 6.4     | 12     | 6      | 10.3   | 14.5   | 26.3   | 4.2    | 10.1   | 4       | 5.5     | 1.8    | 4.6                         | 1,160            |
| RF-M7     | UL 486A-486B;<br>UL 486C | M7             | 7.2     | 9.4    | 4.7    | 8.1    | 12.3   | 22.8   | 4.2    | 10.1   | 4       | 5.5     | 1.8    | 4.6                         | 0,720            |
| RF-M8     | UL 486A-486B;<br>UL 486C | M8             | 8.4     | 12     | 6      | 10.3   | 14.5   | 26.3   | 4.2    | 10.1   | 4       | 5.5     | 1.8    | 4.6                         | 1,020            |
| RF-M10    | UL 486A-486B;<br>UL 486C | M10            | 10.5    | 15.5   | 7.75   | 13.05  | 17.25  | 30.8   | 4.2    | 10.1   | 4       | 5.5     | 1.8    | 4.6                         | 1,340            |
| RF-M12    | UL 486A-486B;<br>UL 486C | M12            | 13      | 18     | 9      | 15.5   | 19.7   | 34.5   | 4.2    | 10.1   | 4       | 5.5     | 1.8    | 4.6                         | 1,533            |

**BF-M**Insulated cover colour  
**Blue RAL 5015**Range of cable cross section  
**1.5 ÷ 2.5 mm<sup>2</sup>**

| tipo      | Reference standard       | Screw diameter | ØD [mm] | B [mm] | N [mm] | M [mm] | I [mm] | L [mm] | A [mm] | C [mm] | Ø2 [mm] | Ø3 [mm] | Ø [mm] | Cable stripping length [mm] | Gross weight [g] |
|-----------|--------------------------|----------------|---------|--------|--------|--------|--------|--------|--------|--------|---------|---------|--------|-----------------------------|------------------|
| BF-M2     |                          | M2             | 2.2     | 5.6    | 2.8    | 5      | 9.2    | 17.8   | 4.2    | 10.1   | 4.9     | 6.4     | 2.4    | 4.6                         | 0,712            |
| BF-M3     | UL 486A-486B;<br>UL 486C | M3             | 3.2     | 5.6    | 2.8    | 5      | 9.2    | 17.8   | 4.2    | 10.1   | 4.9     | 6.4     | 2.4    | 4.6                         | 0,698            |
| BF-M3.5   | UL 486A-486B;<br>UL 486C | M3.5           | 3.7     | 5.6    | 2.8    | 5      | 9.2    | 17.8   | 4.2    | 10.1   | 4.9     | 6.4     | 2.4    | 4.6                         | 0,681            |
| BF-M3.5/1 | UL 486A-486B;<br>UL 486C | M3.5           | 3.7     | 6.2    | 3.1    | 6.5    | 10.7   | 19.6   | 4.2    | 10.1   | 4.9     | 6.4     | 2.4    | 4.6                         | 0,783            |
| BF-M4     | UL 486A-486B;<br>UL 486C | M4             | 4.3     | 8      | 4      | 6.5    | 10.7   | 20.5   | 4.2    | 10.1   | 4.9     | 6.4     | 2.4    | 4.6                         | 0,832            |
| BF-M5     | UL 486A-486B;<br>UL 486C | M5             | 5.3     | 8      | 4      | 7.5    | 11.7   | 21.5   | 4.2    | 10.1   | 4.9     | 6.4     | 2.4    | 4.6                         | 0,813            |
| BF-M6     | UL 486A-486B;<br>UL 486C | M6             | 6.4     | 9.4    | 4.7    | 8.6    | 12.8   | 23.3   | 4.2    | 10.1   | 4.9     | 6.4     | 2.4    | 4.6                         | 0,906            |
| BF-M6/1   | UL 486A-486B;<br>UL 486C | M6             | 6.4     | 12     | 6      | 10.3   | 14.5   | 26.3   | 4.2    | 10.1   | 4.9     | 6.4     | 2.4    | 4.6                         | 1,274            |

| tipo    | Reference standard       | Screw diameter | ØD [mm] | B [mm] | N [mm] | M [mm] | I [mm] | L [mm] | A [mm] | C [mm] | Ø2 [mm] | Ø3 [mm] | Ø [mm] | Cable stripping length [mm] | Gross weight [g] |
|---------|--------------------------|----------------|---------|--------|--------|--------|--------|--------|--------|--------|---------|---------|--------|-----------------------------|------------------|
| BF-M6/2 |                          | M6             | 6.4     | 8.4    | 4.2    | 5.4    | 9.6    | 19.6   | 4.2    | 10.1   | 4.9     | 6.4     | 2.4    | 4.6                         | 0,695            |
| BF-M7   | UL 486A-486B;<br>UL 486C | M7             | 7.2     | 10     | 5      | 7.8    | 12     | 22.8   | 4.2    | 10.1   | 4.9     | 6.4     | 2.4    | 4.6                         | 0,940            |
| BF-M8   | UL 486A-486B;<br>UL 486C | M8             | 8.4     | 12     | 6      | 10.3   | 14.5   | 26.3   | 4.2    | 10.1   | 4.9     | 6.4     | 2.4    | 4.6                         | 1,060            |
| BF-M10  | UL 486A-486B;<br>UL 486C | M10            | 10.5    | 15.5   | 7.75   | 13.05  | 17.25  | 30.8   | 4.2    | 10.1   | 4.9     | 6.4     | 2.4    | 4.6                         | 1,429            |
| BF-M12  | UL 486A-486B;<br>UL 486C | M12            | 13      | 18     | 9      | 15.5   | 19.7   | 34.5   | 4.2    | 10.1   | 4.9     | 6.4     | 2.4    | 4.6                         | 1,680            |

**GF-M** Insulated cover colour **Yellow RAL 1021** Range of cable cross section **4 ÷ 6 mm<sup>2</sup>**

| tipo     | Reference standard       | Screw diameter | ØD [mm] | B [mm] | N [mm] | M [mm] | I [mm] | L [mm] | A [mm] | C [mm] | Ø2 [mm] | Ø3 [mm] | Ø [mm] | Cable stripping length [mm] | Gross weight [g] |
|----------|--------------------------|----------------|---------|--------|--------|--------|--------|--------|--------|--------|---------|---------|--------|-----------------------------|------------------|
| GF-M3    | UL 486A-486B;<br>UL 486C | M3             | 3.2     | 8      | 4      | 8.1    | 14.5   | 26.2   | 6.4    | 14.1   | 6.6     | 8.1     | 3.6    | 7                           | 1,840            |
| GF-M3,5  | UL 486A-486B;<br>UL 486C | M3,5           | 3.7     | 8      | 4      | 8.1    | 14.5   | 26.2   | 6.4    | 14.1   | 6.6     | 8.1     | 3.6    | 7                           | 1,860            |
| GF-M4    | UL 486A-486B;<br>UL 486C | M4             | 4.3     | 9      | 4.5    | 8.1    | 14.5   | 26.7   | 6.4    | 14.1   | 6.6     | 8.1     | 3.6    | 7                           | 1,860            |
| GF-M5    | UL 486A-486B;<br>UL 486C | M5             | 5.3     | 9      | 4.5    | 8.1    | 14.5   | 26.7   | 6.4    | 14.1   | 6.6     | 8.1     | 3.6    | 7                           | 1,820            |
| GF-M6    | UL 486A-486B;<br>UL 486C | M6             | 6.4     | 11     | 5.5    | 11.1   | 17.5   | 30.7   | 6.4    | 14.1   | 6.6     | 8.1     | 3.6    | 7                           | 2,140            |
| GF-M6/1  | UL 486A-486B;<br>UL 486C | M6             | 6.4     | 11     | 5.5    | 8.1    | 14.5   | 27.7   | 6.4    | 14.1   | 6.6     | 8.1     | 3.6    | 7                           | 1,820            |
| GF-M7    | UL 486A-486B;<br>UL 486C | M7             | 7.2     | 11     | 5.5    | 11.1   | 17.5   | 30.7   | 6.4    | 14.1   | 6.6     | 8.1     | 3.6    | 7                           | 2,040            |
| GF-M8    | UL 486A-486B;<br>UL 486C | M8             | 8.4     | 13.6   | 6.8    | 12.1   | 18.5   | 33     | 6.4    | 14.1   | 6.6     | 8.1     | 3.6    | 7                           | 2,372            |
| GF-M8/1  | UL 486A-486B;<br>UL 486C | M8             | 8.4     | 11     | 5.5    | 8.1    | 14.5   | 27.8   | 6.4    | 14.1   | 6.6     | 8.1     | 3.6    | 7                           | 1,707            |
| GF-M10   | UL 486A-486B;<br>UL 486C | M10            | 10.5    | 13.6   | 6.8    | 12.1   | 18.5   | 33     | 6.4    | 14.1   | 6.6     | 8.1     | 3.6    | 7                           | 2,000            |
| GF-M10/1 | UL 486A-486B;<br>UL 486C | M10            | 10.5    | 15.5   | 7.75   | 13.85  | 20.25  | 35.7   | 6.4    | 14.1   | 6.6     | 8.1     | 3.6    | 7                           | 2,500            |
| GF-M12   | UL 486A-486B;<br>UL 486C | M12            | 13      | 19     | 9.5    | 15.1   | 21.5   | 38.7   | 6.4    | 14.1   | 6.6     | 8.1     | 3.6    | 7                           | 3,180            |
| GF-M14   | UL 486A-486B;<br>UL 486C | M14            | 15      | 21     | 10.5   | 16.1   | 22.5   | 40.7   | 6.4    | 14.1   | 6.6     | 8.1     | 3.6    | 7                           | 3,172            |
| GF-M16   | UL 486A-486B;<br>UL 486C | M16            | 17      | 24     | 12.5   | 17.1   | 23.5   | 43.2   | 6.4    | 14.1   | 6.6     | 8.1     | 3.6    | 7                           | 3,600            |