

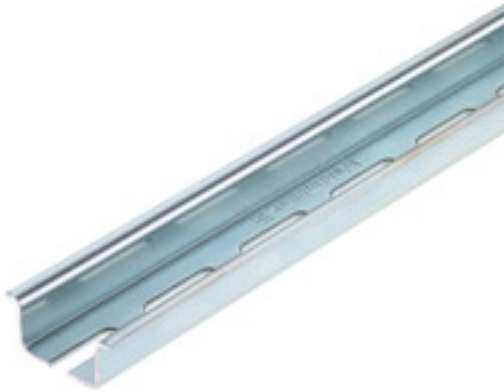
**TS 35X15/LL 2M/ST/ZN****Weidmüller Interface GmbH & Co. KG**

Klingenbergstraße 26

D-32758 Detmold

Germany

www.weidmueller.com

**Product image**

Steel DIN rails are the most widespread on the market. Among metal DIN rails, they have the lowest shortcircuit protection, similar to stainless steel.

**General ordering data**

Version	Terminal rail, with slot, Accessories, 35 x 15 x 2000 mm, Slit width: 5.20 mm, Slit length: 25.00 mm, Steel, galvanic zinc plated and passivated
Order No.	<a href="#">0236500000</a>
Type	TS 35X15/LL 2M/ST/ZN
GTIN (EAN)	4008190183967
Qty.	2 m

Creation date 09 July 2024 16:18:07 CEST

Catalogue status 29.06.2024 / We reserve the right to make technical changes.

## TS 35X15/LL 2M/ST/ZN

**Weidmüller Interface GmbH & Co. KG**

Klingenbergstraße 26

D-32758 Detmold

Germany

[www.weidmueller.com](http://www.weidmueller.com)

## Technical data

### Dimensions and weights

Depth	15 mm	Depth (inches)	0.591 inch
Height	35 mm	Height (inches)	1.378 inch
Width	2,000 mm	Width (inches)	78.74 inch
Net weight	627 g		

### Mounting rail

Drill-hole diameter	5.2 mm	
Installation advice	Direct mounting	
Length of the terminal rail	nominal	2,000 mm
	max.	2,000 mm
	min.	0 mm
Material	Steel	
Pre-punched mounting rail	Yes	
Short circuit strength corresponds to E-Cu wire	50 mm <sup>2</sup>	
Short-time withstand current per second according to IEC 60947-7-2	6 kA	
Slit gap	11 mm	
Slit gap		
Slit length	25 mm	
Slit length		
Slit width	5.2 mm	
Slit width		
Slotted drill holes	Yes	
Solder eyelet hole diameter (D)	5.2 mm	
Spacing of holes, centre-to-centre	36 mm	
Standards	In accordance with DIN EN 60715	
Surface finish	galvanic zinc plated and passivated	
Thickness	1.5 mm	

### Classifications

ETIM 6.0	EC001285	ETIM 7.0	EC001285
ETIM 8.0	EC001285	ETIM 9.0	EC001285
ECLASS 9.0	27-40-06-02	ECLASS 9.1	27-40-06-02
ECLASS 10.0	27-40-06-02	ECLASS 11.0	27-40-06-02
ECLASS 12.0	27-40-06-02	ECLASS 13.0	27-40-06-02

### Environmental Product Compliance

REACH SVHC /

### Approvals

ROHS Conform

### Downloads

Engineering Data	<a href="#">CAD data – STEP</a>
Engineering Data	<a href="#">Zuken E3.S</a>
User Documentation	<a href="#">Storage Conditions Terminal Blocks</a>
Catalogues	<a href="#">Catalogues in PDF-format</a>
Brochures	

Creation date 09 July 2024 16:18:07 CEST

Catalogue status 29.06.2024 / We reserve the right to make technical changes.

**Data sheet**

**TS 35X15/LL 2M/ST/ZN**

**Weidmüller Interface GmbH & Co. KG**  
Klingenbergstraße 26  
D-32758 Detmold  
Germany

[www.weidmueller.com](http://www.weidmueller.com)

**Drawings**

