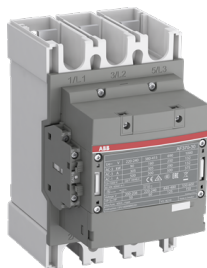




 PRODUCT-DETAILS

AF370-30-11-13

AF370-30-11-13 Contactor



General Information

Extended Product Type	AF370-30-11-13
Product ID	1SFL607002R1311
EAN	7320500481899
Catalog Description	AF370-30-11-13 Contactor

Long Description	<p>The AF370-30-11-13 is a 3 pole - 1000 V IEC or 600 V UL contactor with pre-mounted auxiliary contacts and Main Circuit Bars, controlling motors up to 200 kW / 400 V AC (AC-3) or 300 hp / 480 V UL and switching power circuits up to 600 A (AC-1) or 520 A UL general use. Thanks to the AF technology, the contactor has a wide control voltage range (100-250 V 50/60 Hz and DC), managing large control voltage variations, reducing panel energy consumptions and ensuring distinct operations in unstable networks. Furthermore, surge protection is built-in, offering a compact solution. AF contactors have a block type design, can be easily extended with add-on auxiliary contact blocks and an additional wide range of accessories.</p>
------------------	--

Ordering

Minimum Order Quantity	1 piece
Customs Tariff Number	85364900

Popular Downloads

Data Sheet, Technical Information	1SBC100192C0206
Instructions and Manuals	1SFC100008M0201
CAD Dimensional Drawing	2CDC001079B0201
Dimension Diagram	1SFB535001G1060

Dimensions

Product Net Width	140 mm
Product Net Depth / Length	180 mm
Product Net Height	225 mm
Product Net Weight	3.9 kg

Technical

Number of Main Contacts NO	3
Number of Main Contacts NC	0
Number of Auxiliary Contacts NO	1
Number of Auxiliary Contacts NC	1
Rated Operational Voltage	Main Circuit 1000 V
Rated Frequency (f)	Main Circuit 50 / 60 Hz
Conventional Free-air Thermal Current (I _{th})	acc. to IEC 60947-4-1, Open Contactors $\Theta = 40\text{ °C}$ 600 A
Rated Operational Current AC-1 (I _e)	(1000 V) 40 °C 400 A (1000 V) 55 °C 350 A (1000 V) 60 °C 350 A (1000 V) 70 °C 290 A (690 V) 40 °C 600 A (690 V) 55 °C 500 A (690 V) 70 °C 400 A
Rated Operational Current AC-3 (I _e)	(415 V) 55 °C 370 A (440 V) 55 °C 370 A (500 V) 55 °C 350 A (690 V) 55 °C 315 A (1000 V) 55 °C 141 A (380 / 400 V) 55 °C 370 A (220 / 230 / 240 V) 55 °C 370 A
Rated Operational Power AC-3 (P _e)	(415 V) 200 kW (440 V) 200 kW (500 V) 250 kW (690 V) 315 kW (1000 V) 200 kW (380 / 400 V) 200 kW (220 / 230 / 240 V) 110 kW
Rated Breaking Capacity AC-3	8 x I _e AC-3
Rated Making Capacity AC-3	10 x I _e AC-3
Short-Circuit Protective Devices	gG Type Fuses 630 A
Rated Short-time	at 40 °C Ambient Temp, in Free Air, from a Cold State 10 s 2960 A

Withstand Current Low Voltage (I_{cw})	at 40 °C Ambient Temp, in Free Air, from a Cold State 15 min 600 A at 40 °C Ambient Temp, in Free Air, from a Cold State 1 min 1208 A at 40 °C Ambient Temp, in Free Air, from a Cold State 1 s 3700 A at 40 °C Ambient Temp, in Free Air, from a Cold State 30 s 1709 A
Maximum Breaking Capacity	cos phi=0.45 (cos phi=0.35 for $I_e > 100$ A) at 440 V 5000 A cos phi=0.45 (cos phi=0.35 for $I_e > 100$ A) at 690 V 4000 A
Maximum Electrical Switching Frequency	(AC-1) 300 cycles per hour (AC-2 / AC-4) 150 cycles per hour (AC-3) 300 cycles per hour
Rated Operational Current DC-1 (I_e)	(110 V) 2 Poles in Series, 40 °C 450 A (220 V) 3 Poles in Series, 40 °C 450 A
Rated Operational Current DC-3 (I_e)	(110 V) 2 Poles in Series, 40 °C 450 A (220 V) 3 Poles in Series, 40 °C 450 A
Rated Operational Current DC-5 (I_e)	(110 V) 2 Poles in Series, 40 °C 450 A (220 V) 3 Poles in Series, 40 °C 450 A
Rated Insulation Voltage (U_i)	acc. to IEC 60947-4-1 and VDE 0110 (Gr. C) 1000 V acc. to UL/CSA 600 V
Rated Impulse Withstand Voltage (U_{imp})	Main Circuit 8 kV
Mechanical Durability	5 million
Maximum Mechanical Switching Frequency	300 cycles per hour
Coil Operating Limits	(acc. to IEC 60947-4-1) 0.85 x U_c Min. ... 1.1 x U_c Max. (at $\theta \leq 70$ °C)
Rated Control Circuit Voltage (U_c)	50 Hz 100 ... 250 V 60 Hz 100 ... 250 V DC Operation 100 ... 250 V
Coil Consumption	Holding at Max. Rated Control Circuit Voltage 50 Hz 17.5 V-A Holding at Max. Rated Control Circuit Voltage 60 Hz 17.5 V-A Holding at Max. Rated Control Circuit Voltage DC 4.5 W Pull-in at Max. Rated Control Circuit Voltage 50 Hz 385 V-A Pull-in at Max. Rated Control Circuit Voltage 60 Hz 385 V-A Pull-in at Max. Rated Control Circuit Voltage DC 410 W
Operate Time	Between Coil De-energization and NO Contact Opening 37 ... 47 ms Between Coil Energization and NO Contact Closing 25 ... 55 ms
Connecting Capacity Main Circuit	Flexible 2 x 70 ... 185 mm ² Rigid Al-Cable 1 x 185 ... 240 mm ² Rigid Cu-Cable 2 x 70 ... 185 mm ²
Connecting Capacity Auxiliary Circuit	Flexible with Ferrule 2x 0.75 ... 2.5 mm ² Flexible with Insulated Ferrule 2x 0.75 ... 2.5 mm ² Flexible 2x0.75 ... 2.5 mm ² Solid 2 x 1 ... 4 mm ² Stranded 1 x 1 4 mm ²
Degree of Protection	acc. to IEC 60529, IEC 60947-1, EN 60529 Coil Terminals IP20 acc. to IEC 60529, IEC 60947-1, EN 60529 Main Terminals IP00
Terminal Type	Main Circuit: Bars

Technical UL/CSA

Maximum Operating Voltage UL/CSA	Main Circuit 1000 V
General Use Rating UL/CSA	(600 V AC) 520 A
Horsepower Rating UL/CSA	(200 V AC) Three Phase 125 hp (208 V AC) Three Phase 125 hp (220 ... 240 V AC) Three Phase 150 hp (440 ... 480 V AC) Three Phase 300 hp (550 ... 600 V AC) Three Phase 350 hp

Environmental

Ambient Air Temperature	Close to Contactor Fitted with Thermal O/L Relay (0.85 ... 1.1 Uc) -25 ... 50 °C Close to Contactor without Thermal O/L Relay (0.85 ... 1.1 Uc) -40 ... 70 °C Close to Contactor for Storage -40 ... 70 °C
Maximum Operating Altitude Permissible	Without Derating 3000 m

Material Compliance

Conflict Minerals Reporting Template (CMRT)	9AKK108467A5658
REACH Declaration	2CMT2021-006202
RoHS Information	2CMT2021-006277
RoHS Status	Following EU Directive 2011/65/EU and Amendment 2015/863 July 22, 2019
Toxic Substances Control Act - TSCA	2CMT2023-006525
WEEE B2C / B2B	Business To Business
WEEE Category	5. Small Equipment (No External Dimension More Than 50 cm)

Circular Value

ABB EcoSolutions	Yes
Circular Design Principles Recyclability Rate	Design for Closing Resource Loops - Standard EN45555 - 76.3 %
End of Life Instructions	1SFC100104D0201
Group Waste to Landfill Target	Non-hazardous waste is sent to a landfill, where there is no alternative option available within 100km of a facility
Improved Resource Efficiency for Customers	Product Efficiency - Product considered more energy-efficient compared to similar product on market or older products from the same line
Sustainable Material Content	Recycled Metal - 33 %

Eco Transparency

Environmental Product Declaration - EPD	1SFC100104D0201 2TFP200030A1001
---	------------------------------------

Certificates and Declarations

A2L Certificate – UL	9AKK108468A6695
ABS Certificate	14-LD1092198-PDA
BV Certificate	BV_36353_AOBV
CB Certificate	SE-89316
CCS Certificate	GB14T00030
CQC Certificate	CQC2014010304676670 CQC2014010304673866
Declaration of Conformity - CCC	2020980304001305 2020980304001068
Declaration of Conformity - CE	2CMT2015-005439
Declaration of Conformity - UKCA	2CMT2020-006118
DNV Certificate	DNV_E-14043
EAC Certificate	9AKK107046A8618

GL Certificate	GL_95073-14HH
LR Certificate	LR_14_70011(E1)
PRS Certificate	TE_2092_880423_16
RINA Certificate	ELE060313XG_002
RMRS Certificate	9AKK107045A6978
UL Certificate	20121217-E36588
UL Listing Card	UL_E36588

Container Information

Package Level 1 Units	box 1 piece
Package Level 1 Width	263 mm
Package Level 1 Depth / Length	203 mm
Package Level 1 Height	289 mm
Package Level 1 Gross Weight	4.6 kg
Package Level 1 EAN	7320500481899

Classifications

Object Classification Code	Q
ETIM 4	EC000066 - Magnet contactor, AC-switching
ETIM 5	EC000066 - Magnet contactor, AC-switching
ETIM 6	EC000066 - Power contactor, AC switching
ETIM 7	EC000066 - Power contactor, AC switching
ETIM 8	EC000066 - Power contactor, AC switching
eClass	V11.0 : 27371003
UNSPSC	39121529
IDEA Granular Category Code (IGCC)	4758 >> lec Contactors
E-Number (Finland)	3706498
E-Number (Norway)	4117655
E-Number (Sweden)	3210171

Accessories

Identifier	Description	Type	Quantity	Unit Of Measure
1SFN170801R1001	RU19/120 LVRT-Module	RU19/120	1	piece
1SFN170801R1002	RU19/240 LVRT-Module	RU19/240	1	piece

Categories

Low Voltage Products and Systems → Control Products → Contactors → Block Contactors → AF Contactors → AF370

