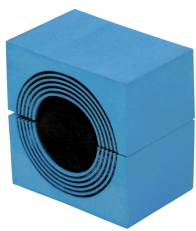


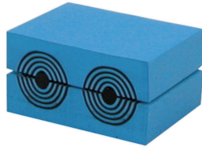
# Roxtec CM module with Multidiameter™

Roxtec CM modules are 30 or 40 mm (1.181"/1.575") deep and easily adapted to cables and pipes of different sizes. When used with a solid core, the module functions as a spare module for future capacity.

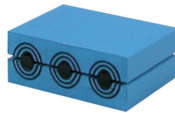
- To be used with corresponding Roxtec components to form a complete sealing solution
- For cables and pipes 3.5-34.5 mm (0.138"-1.358") OD



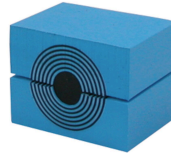
CM 40



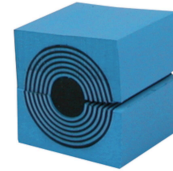
CM 20w40



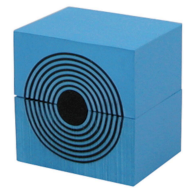
CM 15w40



CM 30w40



CM 30



CM 40 10-32

Product	External dimensions WxHxD (mm)	Number of cables/pipes	For cable/pipe Ø (mm)	Weight (kg)	Art. No
CM 15w40	40 x 15 x 30	3	3.5 - 10.5	0.03	C000115401000
CM 20	20 x 20 x 30	1	4 - 14.5	0.02	C000100201000
CM 20w40	40 x 20 x 30	2	3.5 - 16.5	0.04	C000120401000
CM 30	30 x 30 x 30	1	10 - 25	0.04	C000100301000
CM 30w40	40 x 30 x 30	1	10 - 25	0.05	C000130401000
CM 40	40 x 40 x 30	1	21.5 - 34.5	0.07	5CM0000008983
CM 40 10-32	40 x 40 x 30	1	9.5 - 32.5	0.07	C000140101000
CM 50	50 x 50 x 30	1	28 - 44	0.12	C000100501000