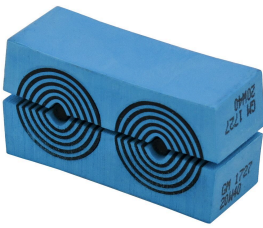


# Roxtec GM module with Multidiameter™

Roxtec GM sealing modules are easy to adapt to cables and pipes of different sizes thanks to Multidiameter™, the Roxtec innovation based on removable layers. When used with a core, the module functions as spare module for future capacity.

- ◉ To be used with Roxtec EzEntry™ 4 mini and RG M63 frames



GM 20w40

Product	External dimensions WxHxD (mm)	Number of cables/pipes	For cable/pipe Ø (mm)	Weight (kg)	Art. No
GM 13,3w40	40 x 13 x 15	3	3.5 - 10.5	0.01	GM00113401000
GM 20w40	40 x 20 x 15	2	3.5 - 16.5	0.02	GM00120401000
GM 40 10-32	40 x 40 x 15	1	9.5 - 32.5	0.04	GM00140101000