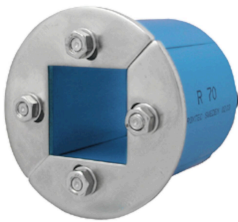


# Roxtec R frame

The Roxtec R frame is round with a square packing space for multiple cables, pipes and modules. Compression is integrated in the frame. Allows installation around existing cables and pipes.

- To be used with corresponding Roxtec components to form a complete sealing solution
- Attachment by expansion in holes
- Sleeve accessory available



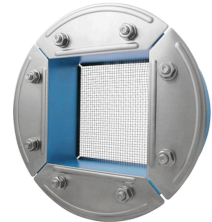
R 70 AISI 316



R 100 AISI 316



R 150 GALV



R 200 AISI 316

## Galvanized mild steel

Product	Packing space (mm)	Aperture dimension Ø (mm)	Weight (kg)	Art. No
R 100 GALV	60 x 60	100 - 102	0.8	R000001001018
R 125 GALV	80 x 80	125 - 127	1.1	R000001251018
R 127 GALV	80 x 80	127 - 129	1.1	R000001271018
R 150 GALV	90 x 90	150 - 152	1.6	R000001501018
R 200 GALV	120 x 120	200 - 202	2.6	R000002001018

## Stainless steel

Product	Packing space (mm)	Aperture dimension Ø (mm)	Weight (kg)	Art. No
R 50 AISI316	30 x 30	50 - 52	0.21	5R00000012875
R 70 AISI316	40 x 40	70 - 72	0.45	R000000701021
R 75 AISI316	40 x 40	75 - 77	0.5	R000000751021
R 100 AISI316	60 x 60	100 - 102	0.8	R000001001021
R 125 AISI316	80 x 80	125 - 127	1.1	R000001251021
R 127 AISI316	80 x 80	127 - 129	1.1	R000001271021
R 150 AISI316	90 x 90	150 - 152	1.6	R000001501021

Product	Packing space (mm)	Aperture dimension Ø (mm)	Weight (kg)	Art. No
R 200 AISI316	120 x 120	200 - 202	2.6	R000002001021