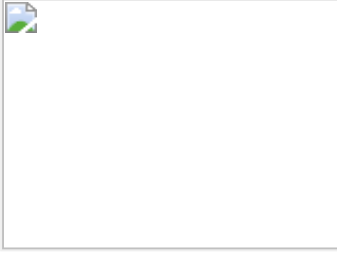



2A-M

HEAVY DUTY RING TERMINAL, WITHOUT INSPECTION HOLE, WITH LONG NECK, FOR COPPER CONDUCTORS



CERTIFICATIONS & APPROVALS

 UL (cULus)

Features

TECHNICAL INFORMATION

Minimum operating temperature	-50 °C
Maximum operating temperature	150 °C
Number of holes on the palm	1
Easy insertion input	Yes
Surface treatment	tin plating
Maximum operating voltage	35000 V

CLASSIFICATION AND DATA ORDERING

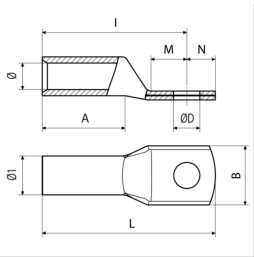
Customs code	85369010
--------------	----------

MATERIAL COMPOSITION AND TREATMENTS

Conductor body material	Rame elettrolitico con purezza superiore al 99,95%
Annealing	Yes

CERTIFICATIONS

ROHS compliant	Yes
----------------	-----



2A3-MRange of cable cross section
16 ÷ 16 mm²

tipo	Screw diameter	ØD [mm]	B [mm]	N [mm]	M [mm]	I [mm]	L [mm]	A [mm]	Ø [mm]	Cable stripping length [mm]	Ø1 [mm]	Unit in minimal packaging [pce]	Unit in standard packaging [pce]	UL standard
2A3-M8	M8	8.4	15	8	9	35.5	43.5	22	5.8	25	7.9	100	600	486A-486B
2A3-M10	M10	10.5	18	10	11	37.5	47.5	22	5.8	25	7.9	100	500	486A-486B

2A5-MRange of cable cross section
25 ÷ 25 mm²

tipo	Screw diameter	ØD [mm]	B [mm]	N [mm]	M [mm]	I [mm]	L [mm]	A [mm]	Ø [mm]	Cable stripping length [mm]	Ø1 [mm]	Unit in minimal packaging [pce]	Unit in standard packaging [pce]	UL standard
2A5-M8	M8	8.4	15	8	9	43	51	25.5	7	28	9.3	100	400	486A-486B
2A5-M10	M10	10.5	18	10	11	45	55	25.5	7	28	9.3	50	300	486A-486B
2A5-M12	M12	13.2	21	12	14	48	60	25.5	7	28	9.3	50	300	486A-486B

2A7-MRange of cable cross section
35 ÷ 35 mm²

tipo	Screw diameter	ØD [mm]	B [mm]	N [mm]	M [mm]	I [mm]	L [mm]	A [mm]	Ø [mm]	Cable stripping length [mm]	Ø1 [mm]	Unit in minimal packaging [pce]	Unit in standard packaging [pce]	UL standard
2A7-M8	M8	8.4	17	8	9	45	53	26	8.9	29	11.7	50	200	486A-486B
2A7-M10	M10	10.5	19	10	11	47	57	26	8.9	29	11.7	50	200	486A-486B
2A7-M12	M12	13.2	21	12	14	50	62	26	8.9	29	11.7	50	200	486A-486B

2A10-MRange of cable cross section
50 ÷ 50 mm²

tipo	Screw diameter	ØD [mm]	B [mm]	N [mm]	M [mm]	I [mm]	L [mm]	A [mm]	Ø [mm]	Cable stripping length [mm]	Ø1 [mm]	Unit in minimal packaging [pce]	Unit in standard packaging [pce]	UL standard
2A10-M10	M10	10.5	20	10	11	53	63	30	10	33	13	50	100	486A-486B
2A10-M12	M12	13.2	21	12	14	56	68	30	10	33	13	50	100	486A-486B
2A10-M14	M14	15	25	14	16	58	72	30	10	33	13	50	150	486A-486B
2A10-M16	M16	17	26	16	18	60	76	30	10	33	13	50	150	486A-486B

2A14-MRange of cable cross section
63 ÷ 70 mm²

tipo	Screw diameter	ØD [mm]	B [mm]	N [mm]	M [mm]	I [mm]	L [mm]	A [mm]	Ø [mm]	Cable stripping length [mm]	Ø1 [mm]	Unit in minimal packaging [pce]	Unit in standard packaging [pce]	UL standard
2A14-M10	M10	10.5	21	10	11	60	70	36	11.3	40	14.6	50	100	486A-486B

tipo	Screw diameter	ØD [mm]	B [mm]	N [mm]	M [mm]	I [mm]	L [mm]	A [mm]	Ø [mm]	Cable stripping length [mm]	Ø1 [mm]	Unit in minimal packaging [pce]	Unit in standard packaging [pce]	UL standard
2A14-M12	M12	13.2	22	12	14	63	75	36	11.3	40	14.6	50	100	486A-486B
2A14-M14	M14	15	25	14	16	65	79	36	11.3	40	14.6	50	100	486A-486B
2A14-M16	M16	17	26	16	18	67	83	36	11.3	40	14.6	50	100	486A-486B

2A19-M

Range of cable cross section
95 ÷ 95 mm²

tipo	Screw diameter	ØD [mm]	B [mm]	N [mm]	M [mm]	I [mm]	L [mm]	A [mm]	Ø [mm]	Cable stripping length [mm]	Ø1 [mm]	Unit in minimal packaging [pce]	Unit in standard packaging [pce]	UL standard
2A19-M10	M10	10.5	25	10	11	66.5	76.5	40	13.5	44	17.5	25	50	486A-486B
2A19-M12	M12	13.2	25	12	14	69.5	81.5	40	13.5	44	17.5	25	50	486A-486B
2A19-M14	M14	15	25	14	16	71.5	85.5	40	13.5	44	17.5	25	75	486A-486B
2A19-M16	M16	17	27	16	18	73.5	90.5	40	13.5	44	17.5	25	50	486A-486B
2A19-M20	M20	21	29	20	22	77.5	97.5	40	13.5	44	17.5	25	50	486A-486B

2A24-M

Range of cable cross section
120 ÷ 120 mm²

tipo	Screw diameter	ØD [mm]	B [mm]	N [mm]	M [mm]	I [mm]	L [mm]	A [mm]	Ø [mm]	Cable stripping length [mm]	Ø1 [mm]	Unit in minimal packaging [pce]	Unit in standard packaging [pce]	UL standard
2A24-M10	M10	10.5	28.5	10	11	72	82	42	15.2	47	19.6	15	30	486A-486B
2A24-M12	M12	13.2	28.5	12	14	75	87	42	15.2	47	19.6	15	30	486A-486B
2A24-M14	M14	15	28.5	14	16	77	91	42	15.2	47	19.6	15	30	486A-486B
2A24-M16	M16	17	28.5	16	18	79	95	42	15.2	47	19.6	15	30	486A-486B
2A24-M20	M20	21	30	20	22	83	103	42	15.2	47	19.6	25	50	486A-486B

2A30-M

Range of cable cross section
150 ÷ 150 mm²

tipo	Screw diameter	ØD [mm]	B [mm]	N [mm]	M [mm]	I [mm]	L [mm]	A [mm]	Ø [mm]	Cable stripping length [mm]	Ø1 [mm]	Unit in minimal packaging [pce]	Unit in standard packaging [pce]	UL standard
2A30-M10	M10	10.5	31.5	11	13	81	92	49	16.7	54	21.5	15	30	486A-486B
2A30-M12	M12	13.2	31.5	14	16	84	98	49	16.7	54	21.5	15	30	486A-486B
2A30-M14	M14	15	31.5	16	18	86	102	49	16.7	54	21.5	15	30	486A-486B
2A30-M16	M16	17	31.5	17	19	87	104	49	16.7	54	21.5	15	30	486A-486B

tipo	Screw diameter	ØD [mm]	B [mm]	N [mm]	M [mm]	I [mm]	L [mm]	A [mm]	Ø [mm]	Cable stripping length [mm]	Ø1 [mm]	Unit in minimal packaging [pce]	Unit in standard packaging [pce]	UL standard
2A30-M20	M20	21	31.5	20	22	90	110	49	16.7	54	21.5	15	30	486A-486B

2A37-M

Range of cable cross section
185 ÷ 185 mm²

tipo	Screw diameter	ØD [mm]	B [mm]	N [mm]	M [mm]	I [mm]	L [mm]	A [mm]	Ø [mm]	Cable stripping length [mm]	Ø1 [mm]	Unit in minimal packaging [pce]	Unit in standard packaging [pce]	UL standard
2A37-M12	M12	13.2	35.5	14	16	94	108	55	19.2	61	24.4	10	20	486A-486B
2A37-M14	M14	15	35.5	16	18	96	112	55	19.2	61	24.4	15	30	486A-486B
2A37-M16	M16	17	35.5	17	19	97	114	55	19.2	61	24.4	15	30	486A-486B
2A37-M20	M20	21	35.5	20	22	100	120	55	19.2	61	24.4	15	30	486A-486B

2A48-M

Range of cable cross section
240 ÷ 240 mm²

tipo	Screw diameter	ØD [mm]	B [mm]	N [mm]	M [mm]	I [mm]	L [mm]	A [mm]	Ø [mm]	Cable stripping length [mm]	Ø1 [mm]	Unit in minimal packaging [pce]	Unit in standard packaging [pce]	UL standard
2A48-M12	M12	13.2	39	14	16	95	109	55	21.1	61	27.2	5	20	486A-486B
2A48-M14	M14	15	39	16	18	97	113	55	21.1	61	27.2	5	20	486A-486B
2A48-M16	M16	17	39	17	19	98	115	55	21.1	61	27.2	5	20	486A-486B
2A48-M20	M20	21	39	20	22	91	121	55	21.1	61	27.2	5	25	486A-486B

2A60-M

Range of cable cross section
300 ÷ 300 mm²

tipo	Screw diameter	ØD [mm]	B [mm]	N [mm]	M [mm]	I [mm]	L [mm]	A [mm]	Ø [mm]	Cable stripping length [mm]	Ø1 [mm]	Unit in minimal packaging [pce]	Unit in standard packaging [pce]	UL standard
2A60-M12	M12	13.2	30	14	20	115.5	129.5	70	23.7	77	30.6	5	15	486A-486B
2A60-M14	M14	15	30	16	22	117.5	133.5	70	23.7	77	30.6	5	15	486A-486B
2A60-M16	M16	17	40	19	22	117.5	136.5	70	23.7	77	30.6	5	15	486A-486B
2A60-M20	M20	21	40	23	24	119.5	142.5	70	23.7	77	30.6	5	15	486A-486B

2A80-M

Range of cable cross section
400 ÷ 400 mm²

tipo	Screw diameter	ØD [mm]	B [mm]	N [mm]	M [mm]	I [mm]	L [mm]	A [mm]	Ø [mm]	Cable stripping length [mm]	Ø1 [mm]	Unit in minimal packaging [pce]	Unit in standard packaging [pce]	UL standard
2A80-M12	M12	13.2	51	19	22	121	140	70	27	77	35	5	10	486A-486B

tipo	Screw diameter	ØD [mm]	B [mm]	N [mm]	M [mm]	I [mm]	L [mm]	A [mm]	Ø [mm]	Cable stripping length [mm]	Ø1 [mm]	Unit in minimal packaging [pce]	Unit in standard packaging [pce]	UL standard
2A80-M14	M14	15	51	19	22	121	140	70	27	77	35	5	10	486A-486B
2A80-M16	M16	17	51	19	22	121	140	70	27	77	35	5	10	486A-486B
2A80-M20	M20	21	51	23	24	123	146	70	27	77	35	5	15	486A-486B

2A100-M

Range of cable cross section
500 ÷ 500 mm²

tipo	Screw diameter	ØD [mm]	B [mm]	N [mm]	M [mm]	I [mm]	L [mm]	A [mm]	Ø [mm]	Cable stripping length [mm]	Ø1 [mm]	Unit in minimal packaging [pce]	Unit in standard packaging [pce]	UL standard
2A100-M16	M16	17	56.5	19	22	122	141	67	30.3	74	39.5	1	10	486A-486B
2A100-M20	M20	21	56.5	23	24	124	147	67	30.3	74	39.5	1	10	486A-486B

2A120-M

Range of cable cross section
600 ÷ 630 mm²

tipo	Screw diameter	ØD [mm]	B [mm]	N [mm]	M [mm]	I [mm]	L [mm]	A [mm]	Ø [mm]	Cable stripping length [mm]	Ø1 [mm]	Unit in minimal packaging [pce]	Unit in standard packaging [pce]
2A120-M16	M16	17	61.5	19	22	140	159	85	33.4	94	42.6	1	20
2A120-M20	M20	21	61.5	23	24	142	165	85	33.4	94	42.6	1	20

2A160-M

Range of cable cross section
800 ÷ 800 mm²

tipo	Screw diameter	ØD [mm]	B [mm]	N [mm]	M [mm]	I [mm]	L [mm]	A [mm]	Ø [mm]	Cable stripping length [mm]	Ø1 [mm]	Unit in minimal packaging [pce]	Unit in standard packaging [pce]
2A160-M20	M20	21	72	23	24	164	187	100	38	110	50	1	12

2A200-M

Range of cable cross section
1000 ÷ 1000 mm²

tipo	Screw diameter	ØD [mm]	B [mm]	N [mm]	M [mm]	I [mm]	L [mm]	A [mm]	Ø [mm]	Cable stripping length [mm]	Ø1 [mm]	Unit in minimal packaging [pce]	Unit in standard packaging [pce]
2A200-M20	M20	21	82	23	24	179	202	110	44	121	56	1	6



Via Serenissima, 9 - 25135
Brescia - ITALY