

# Specifications

## Eaton 106839

Eaton Moeller® series LS Actuator, angled

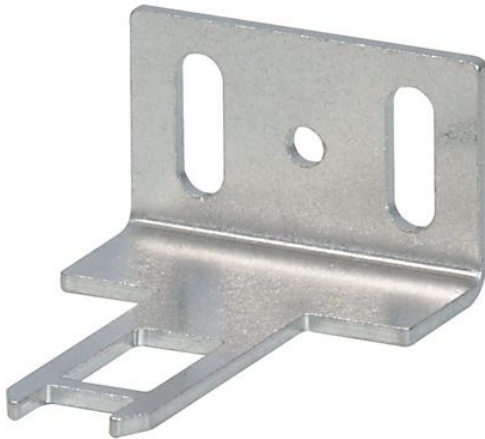


Photo is representative



### General specifications

<b>PRODUCT NAME</b>	Eaton Moeller® series LS Actuator
<b>CATALOG NUMBER</b>	106839
<b>MODEL CODE</b>	LS-XW-ZBZ
<b>EAN</b>	4015081065998
<b>PRODUCT LENGTH/DEPTH</b>	33 mm
<b>PRODUCT HEIGHT</b>	15 mm
<b>PRODUCT WIDTH</b>	35 mm
<b>PRODUCT WEIGHT</b>	0.011 kg
<b>COMPLIANCES</b>	CE Marked
<b>CERTIFICATIONS</b>	EN 60947-5 IEC 60947-5 CSA Std. C22.2 No. 14 UL 508 CSA-C22.2 No. 14 IEC/EN 60947 CSA Class No.: 3211-03 CSA CE CSA File No.: 012528 UL File No.: E29184 UL Category Control No.: NKCR IEC/EN 60947-5 UL



Powering Business Worldwide

## Features & Functions

<b>FUNCTIONS</b>	For combination with LS- ...ZBZ/X basic devices
<b>MATERIAL</b>	Stainless steel

## Ambient conditions, mechanical

<b>MOUNTING POSITION</b>	As required
<b>SHOCK RESISTANCE</b>	10 g, Standard-action contact, Mechanical, Half-Sinusoidal shock 20 ms

## Actuator

<b>MECHANICAL HOLDING FORCE</b>	1700 N (according to GS-ET- 19 (04/2004), XG, XW, XNG) 1600 N (according to GS-ET- 19 (04/2004), XWA, XFG, XF)  1200 N (according to GS-ET- 19 (04/2004), XNW)
---------------------------------	----------------------------------------------------------------------------------------------------------------------------------------------------------------------------------

## General

<b>DUTY FACTOR</b>	100 %
<b>MODEL</b>	Actuator with vertical mounting
<b>OPERATING FREQUENCY</b>	800 Operations/h
<b>TYPE</b>	<ul style="list-style-type: none"><li>• Actuator</li><li>• Angled actuator</li></ul>

## Climatic environmental conditions

<b>AMBIENT OPERATING TEMPERATURE - MIN</b>	-25 °C
<b>AMBIENT OPERATING TEMPERATURE - MAX</b>	40 °C
<b>CLIMATIC PROOFING</b>	Damp heat, constant, to IEC 60068-2-78 Damp heat, cyclic, to IEC 60068-2-30

## Design verification

<b>EQUIPMENT HEAT DISSIPATION, CURRENT-DEPENDENT PVID</b>	0 W
<b>HEAT DISSIPATION CAPACITY PDISS</b>	0 W
<b>HEAT DISSIPATION PER POLE, CURRENT-DEPENDENT PVID</b>	0 W
<b>RATED OPERATIONAL CURRENT FOR SPECIFIED HEAT DISSIPATION (IN)</b>	0 A
<b>STATIC HEAT DISSIPATION, NON-CURRENT-DEPENDENT PVS</b>	0 W
<b>10.2.2 CORROSION RESISTANCE</b>	Meets the product standard's requirements.
<b>10.2.3.1 VERIFICATION OF THERMAL STABILITY OF ENCLOSURES</b>	Meets the product standard's requirements.
<b>10.2.3.2 VERIFICATION OF RESISTANCE OF INSULATING MATERIALS TO NORMAL HEAT</b>	Meets the product standard's requirements.
<b>10.2.3.3 RESIST. OF INSUL. MAT. TO ABNORMAL HEAT/FIRE BY INTERNAL ELECT. EFFECTS</b>	Meets the product standard's requirements.
<b>10.2.4 RESISTANCE TO ULTRA-VIOLET (UV) RADIATION</b>	Please enquire

<b>10.2.5 LIFTING</b>	Does not apply, since the entire switchgear needs to be evaluated.
<b>10.2.6 MECHANICAL IMPACT</b>	Does not apply, since the entire switchgear needs to be evaluated.
<b>10.2.7 INSCRIPTIONS</b>	Meets the product standard's requirements.
<b>10.3 DEGREE OF PROTECTION OF ASSEMBLIES</b>	Does not apply, since the entire switchgear needs to be evaluated.
<b>10.4 CLEARANCES AND CREEPAGE DISTANCES</b>	Meets the product standard's requirements.
<b>10.5 PROTECTION AGAINST ELECTRIC SHOCK</b>	Does not apply, since the entire switchgear needs to be evaluated.
<b>10.6 INCORPORATION OF SWITCHING DEVICES AND COMPONENTS</b>	Does not apply, since the entire switchgear needs to be evaluated.
<b>10.7 INTERNAL ELECTRICAL CIRCUITS AND CONNECTIONS</b>	Is the panel builder's responsibility.
<b>10.8 CONNECTIONS FOR EXTERNAL CONDUCTORS</b>	Is the panel builder's responsibility.
<b>10.9.2 POWER-FREQUENCY ELECTRIC STRENGTH</b>	Is the panel builder's responsibility.
<b>10.9.3 IMPULSE WITHSTAND VOLTAGE</b>	Is the panel builder's responsibility.
<b>10.9.4 TESTING OF ENCLOSURES MADE OF INSULATING MATERIAL</b>	Is the panel builder's responsibility.
<b>10.10 TEMPERATURE RISE</b>	Not applicable.
<b>10.11 SHORT-CIRCUIT RATING</b>	Is the panel builder's responsibility. The specifications for the switchgear must be observed.
<b>10.12 ELECTROMAGNETIC COMPATIBILITY</b>	Is the panel builder's responsibility. The specifications for the switchgear must be observed.
<b>10.13 MECHANICAL FUNCTION</b>	The device meets the requirements, provided the information in the instruction leaflet (IL) is observed.

## Resources

### CATALOGUES

[eaton-pushbuttons-signal-towers-sensors-assortment-overview-catalog-ca047003en-en-us.pdf](#)

[eaton-product-overview-for-machinery-catalogue-ca08103003zen-en-us.pdf](#)

### DECLARATIONS OF

[DA-DC-00004361.pdf](#)

<b>CONFORMITY</b>	<a href="#">DA-DC-00004360.pdf</a>
	<a href="#">1310DIM-8</a>
<b>DRAWINGS</b>	<a href="#">eaton-position-switches-ls-actuator-dimensions-003.eps</a>
	<a href="#">eaton-position-switches-ls-actuator-3d-drawing.eps</a>
	<a href="#">1310DRW-32</a>
<b>INSTALLATION INSTRUCTIONS</b>	<a href="#">eaton-ls-s-zbz-safety-position-switch-instruction-leaflet-il05208005z.pdf</a>
	<a href="#">eaton-cadenas-bottom_view-ls_betaetiger_zbz1_bottom.pra</a>
	<a href="#">ls_betaetiger_zbz1</a>
<b>MCAD MODEL</b>	<a href="#">ls_betaetiger_zbz1.stp</a>
	<a href="#">eaton-cadenas-front_view-ls_betaetiger_zbz1_front.pra</a>
	<a href="#">eaton-cadenas-path-ls-ls_betaetiger_zbz1.3db</a>
<b>SALES NOTES</b>	<a href="#">eaton-safety-switches-rs-titan-flyer-fl053001en-en-us.pdf</a>

---

**PROJECT NAME:**

**PROJECT NUMBER:**

**PREPARED BY:**

**DATE:**



**Eaton Corporation plc**  
 Eaton House  
 30 Pembroke Road  
 Dublin 4, Ireland  
 Eaton.com

© 2025 Eaton. All Rights Reserved.

Eaton is a registered trademark.

All other trademarks are property of their respective owners.

Follow us on social media to get the latest product and support information.

