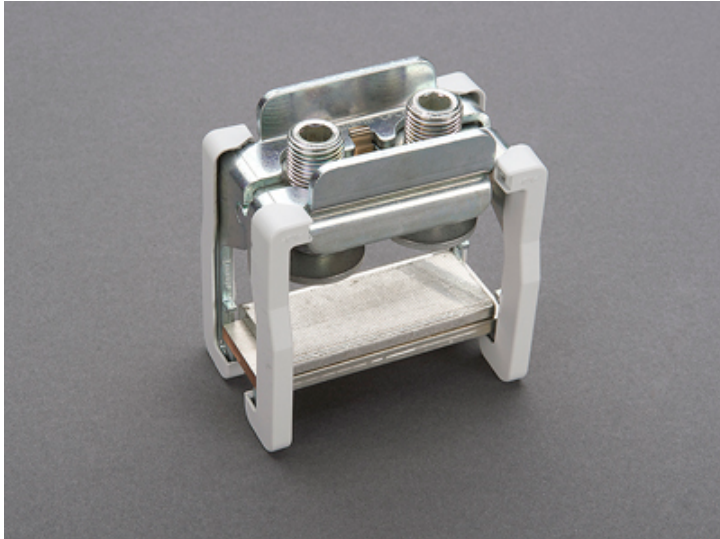


brace terminal (01070)



The picture may show a similar product.

Description

Part No.: **01070**000

CRITO[®]

brace terminal

600 - 1200 mm²

terminal space 68 x 28

for busbars 30 x 10 and section busbars

System

60Classic, centre feed unit, 100Energy

Advantages of the product

also rigid copper busbars can be connected if they are installed without mechanical tension

Product group 07

Subgroup 30

pack size 3

EAN 4021267010706

ECLASS 6.1 27141146
ECLASS 7.1 27141146
ETIM 4.0 EC000001
ETIM 5.0 EC000001

Approvals

Standards

IEC 61439-1:2020
UL 508

Approvals

UL



for UL feeder circuits >250V

type number: CPC63-L

UL file: E123577, UL category (for USA): NMTR <https://www.ul.com>

UL file: E123577, UL category (for Canada): NMTR7 <https://www.ul.com>

CCC approval: no certification required

Technical data

Details IEC

Standards

IEC 61439-1:2020

Electrical data IEC

rated current (IEC): 1600 A

rated voltage (IEC) AC: 690 V

rated peak withstand current I_{pk} max.: 80 kA

Supplementary data IEC

The following values have been verified with tests under certain conditions. Please ask Wöhner for this conditions before designing your panel.

max. permitted voltage (IEC) AC: 1000 V
max. permitted voltage (IEC) DC: 1500 V
current carrying capacity for centre feed: 2,000 A

Details UL

Standards

UL 508

for UL feeder circuits >250V

Electrical data UL

rated current (UL): 1400 A
rated voltage (UL) AC: 600 V
rated frequency (UL): 50 / 60 Hz

SCCR unprotected max.: 30 kA
3 cycles (without OPD) @ 600 V AC
SCCR protected max.: 200 kA

SCCR: 200 kA with fuse Class L 1600 A
65 kA with any DIVQ/7 circuit breaker 1600 A / 480 V AC/DC

Mechanical data

W x H x D: 85 x 52 x 87
weight: 63.0 kg/100
for busbars: 30 x 10 and section busbars

Terminal points

min. cross-section: 500 mm²
max. cross-section: 1,260 mm²
Terminal space: 68 x 10 - 28
Not suitable for aluminium cables !

Application notes

Not suitable for aluminium cables !

The insulation performance of the article depends on the installation conditions.
for UL feeder circuits >250V

<https://pim.woehner.de/EN/EN/1000045852>